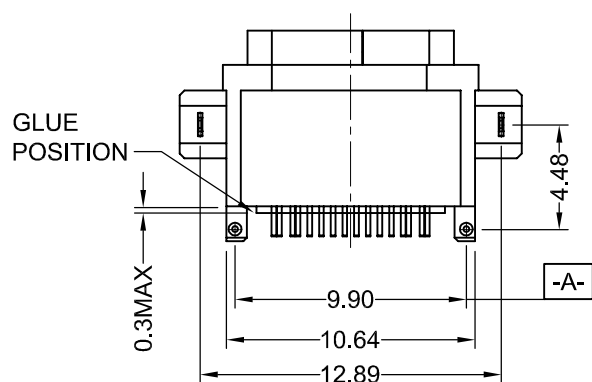
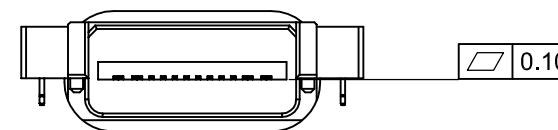
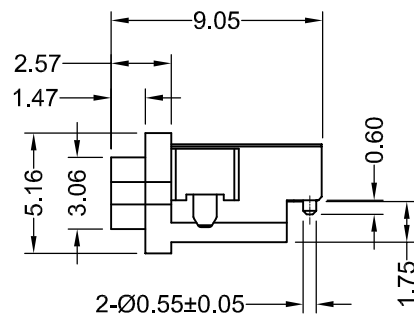
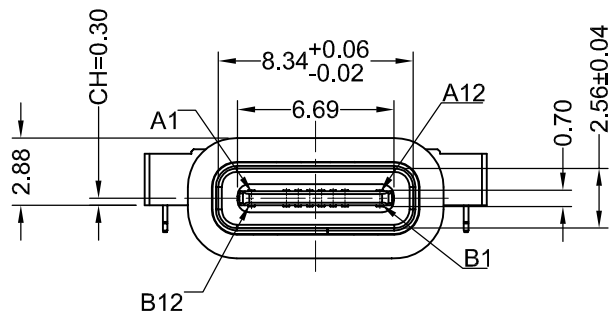
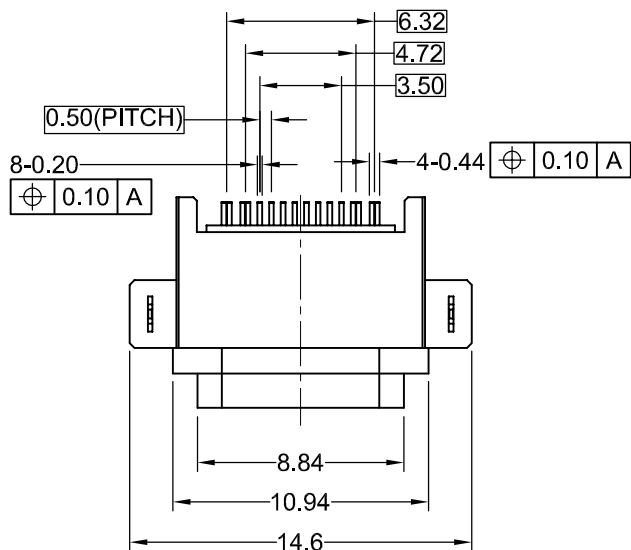




THIS IS A C.A.D. GENERATED DRAWING
 DO NOT MAKE MANUAL REVISIONS TO MASTER.

TOLERANCE UNLESS OTHERWISE
 SPECIFIED IN MM:
 X. ±0.50 ANGLE X. ±2°
 .X ±0.30 ANGLE .X ±1°
 .XX ±0.10 ANGLE .XX ±0.5°
 .XXX ±0.05



SPECIFICATIONS

1. CURRENT RATING: 3.0A MAX
2. DIELECTRIC WITHSTANDING VOLTAGE: 100VAC
3. TEMPERATURE RANGE: -30°C~85°C
4. CONTACT RESISTANCE: 40 MILLIOHM MAX.
5. INSULATION RESISTANCE: 100 MEGOHMS MIN.
6. INSERTION FORCE: 5N~20N
7. UNMATING FORCE: 8N~20N
8. DURABILITY: 10,000 CYCLES
9. IP RATING: IP67

5	O-RING	SILICONE	1
4	SHELL2	SUS304 Ni PLATING T=0.20mm, Ni:40~ 120u"	1
3	SHELL	PA9T (G.F.30%)	1
2	CONTACT	COPPER ALLOY C7025, Au/Ni PLATING Au: 1u" Ni:50~80u", Contact Area: Au=3u"	5
1	HOUSING	PA9T (G.F. 30%)	1
NO.	DESCRIPTION	MATERIAL	QTY.

USB TYPE C, 16PIN, SMT, WITH METAL
 SHELL (IP67)

ACAD REFERENCE NO.: 698B116W26A-661	
DRAWN: N.B.	DATE: AUG.17/2021
CHECKED: R.S.M.	DATE: SEP.14/2021
SCALE: (IN C.A.D. 1:1)	SHEET 1 OF 3
DRAWING NUMBER: 698B116W26A-661	ISSUE 2
PART NUMBER: 698B116W26A-661	



THIS SERIES FULLY CONFORMS TO
 THE EUROPEAN UNION DIRECTIVES
 2011/65/EU FOR RoHS COMPLIANCY.



EDAC INC
 TORONTO, ONTARIO
 CANADA

YOUR CONNECTION TO QUALITY & SERVICE

THESE DRAWINGS AND SPECIFICATIONS
 ARE THE PROPERTY OF EDAC INC.,AND
 SHALL NOT BE REPRODUCED,OR COPIED
 OR USED AS THE BASIS FOR THE
 MANUFACTURE OR SALE OF APPARATUS
 WITHOUT WRITTEN PERMISSION.

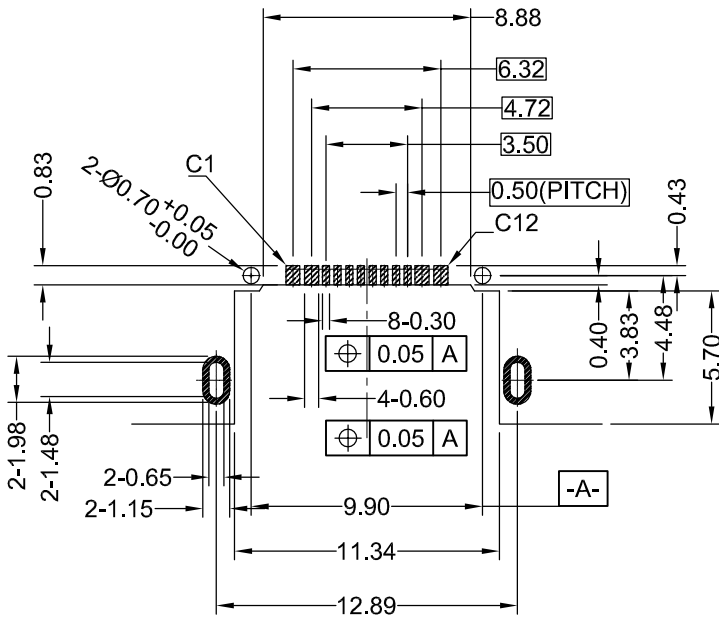
TOLERANCE UNLESS OTHERWISE

SPECIFIED IN MM:

X.	±0.50	ANGLE X.	±2°
.X	±0.30	ANGLE .X	±1°
.XX	±0.10	ANGLE .XX	±0.5°
.XXX	±0.05		

THIS IS A C.A.D. GENERATED DRAWING

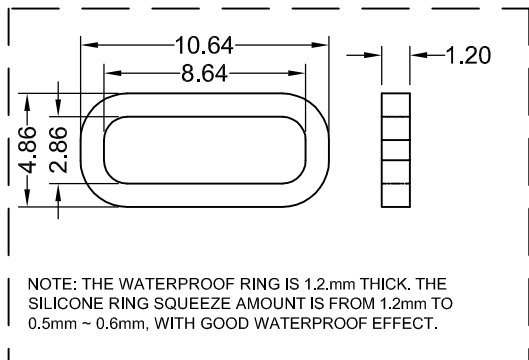
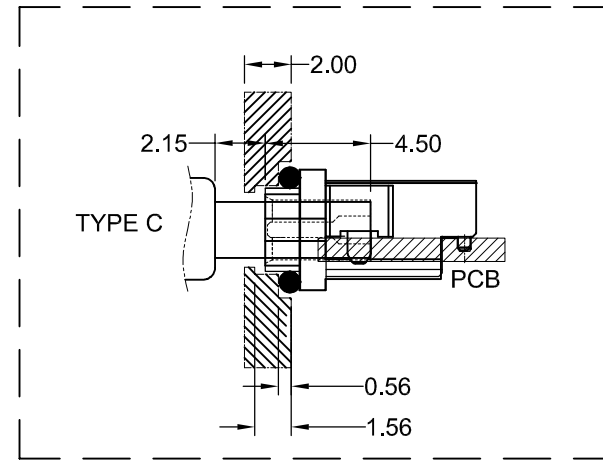
DO NOT MAKE MANUAL REVISIONS TO MASTER.



RECOMMENDED PCB LAYOUT(TOP VIEW)

THICKNESS T=1.0mm

DEFAULT TOLERANCE+/-0.05



NOTE: THE WATERPROOF RING IS 1.2mm THICK, THE SILICONE RING SQUEEZE AMOUNT IS FROM 1.2mm TO 0.5mm ~ 0.6mm, WITH GOOD WATERPROOF EFFECT.

O-RING MATERIAL: SILICONE

INTERFACE(FRONT VIEW)

A1	A2	A3	A4	A5	A6	A7	A8	A9	A10	A11	A12
GND			VBUS	CC1	DP1	DN1	SBU1	VBUS			GND
GND			VBUS	SBU2	DN2	DP2	CC2	VBUS			GND
B12	B11	B10	B9	B8	B7	B6	B5	B4	B3	B2	B1

PIN ASSIGNMENT

PIN NO.	A1&B12	A4&B9	B8	A5	B7	A6	A7	B6	A8	B5	A9&B4	A12&B1
SIGNAL NAME	GND	VBUS	SBU2	CC1	DN2	DP1	DN1	DP2	SBU1	CC2	VBUS	GND
PCB PAD NO.	C1	C2	C3	C4	C5	C6	C7	C8	C9	C10	C11	C12



THIS SERIES FULLY CONFORMS TO THE EUROPEAN UNION DIRECTIVES 2011/65/EU FOR RoHS COMPLIANCY.



EDAC INC
TORONTO, ONTARIO
CANADA

YOUR CONNECTION TO QUALITY & SERVICE

THESE DRAWINGS AND SPECIFICATIONS ARE THE PROPERTY OF EDAC INC., AND SHALL NOT BE REPRODUCED, OR COPIED OR USED AS THE BASIS FOR THE MANUFACTURE OR SALE OF APPARATUS WITHOUT WRITTEN PERMISSION.

ACAD REFERENCE NO.: 698B116W26A-661	
DRAWN: N.B.	DATE: AUG.17/2021
CHECKED: R.S.M.	DATE: SEP.14/2021
SCALE: (IN C.A.D. 1:1)	SHEET 2 OF 3
DRAWING NUMBER: 698B116W26A-661	ISSUE
PART NUMBER: 698B116W26A-661	2

TOLERANCE UNLESS OTHERWISE

SPECIFIED IN MM:

X.	±0.50	ANGLE X.	±2°
.X	±0.30	ANGLE .X	±1°
.XX	±0.10	ANGLE .XX	±0.5°
.XXX	±0.05		

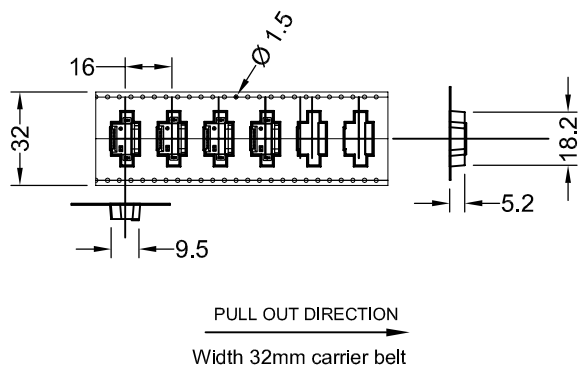
THIS IS A C.A.D. GENERATED DRAWING

DO NOT MAKE MANUAL REVISIONS TO MASTER.



1.1 Place the products one by one in the direction shown below into the tape tray.

1.2 A reel holds 700 pcs.

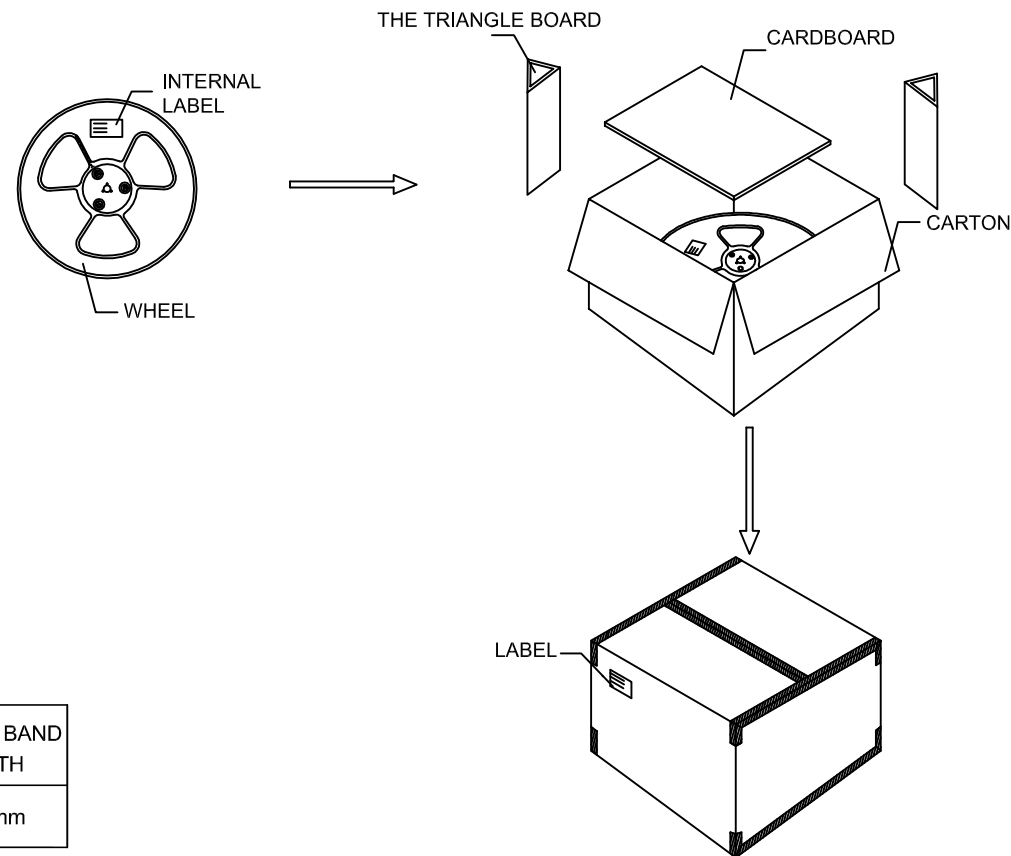


3.1 Each reel shall be affixed with an internal label.

3.2 Place a cardboard on the upper and lower sides of the carton.

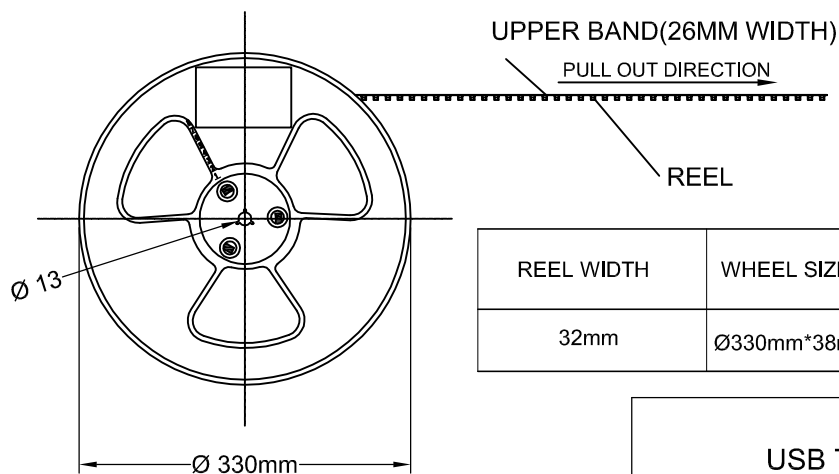
Place each reel of products in the carton one by one.

Place 8 reels of products (5600PCS) in each box. Seal the sides of the carton with cellophane paper and affix labels on the outside.



2.1 16 pcs need to be emptied in the front and at the end of the reel.

2.2 Reels filled with finished products are shown below.



REEL WIDTH	WHEEL SIZE	UPPER BAND WIDTH
32mm	Ø330mm*38mm	26mm

USB TYPE C, 16PIN, SMT, WITH METAL SHELL (IP67)



EDAC INC
TORONTO, ONTARIO
CANADA

YOUR CONNECTION TO QUALITY & SERVICE

THESE DRAWINGS AND SPECIFICATIONS ARE THE PROPERTY OF EDAC INC., AND SHALL NOT BE REPRODUCED, OR COPIED OR USED AS THE BASIS FOR THE MANUFACTURE OR SALE OF APPARATUS WITHOUT WRITTEN PERMISSION.

ACAD REFERENCE NO.: 698B116W26A-661

DRAWN: N.B. DATE: AUG.17/2021

CHECKED: R.S.M. DATE: SEP. 14/2021

SCALE: (IN C.A.D. 1:1) SHEET 3 OF 3

DRAWING NUMBER: 698B116W26A-661

ISSUE

PART NUMBER: 698B116W26A-661

2



THIS SERIES FULLY CONFORMS TO THE EUROPEAN UNION DIRECTIVES 2011/65/EU FOR RoHS COMPLIANCE.