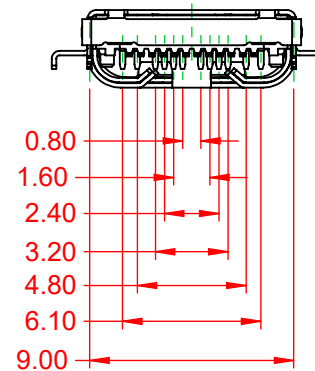
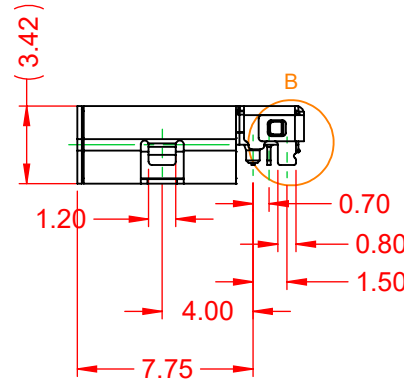
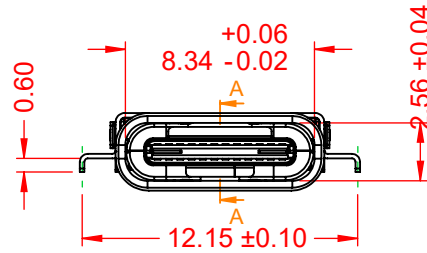
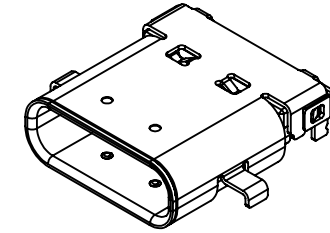
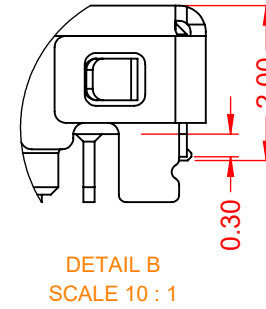
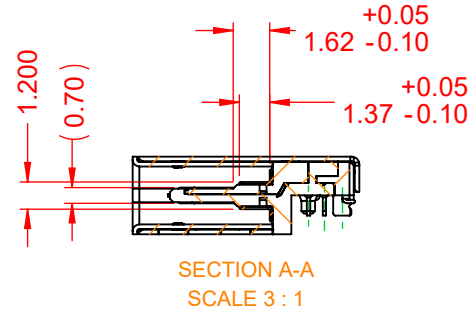
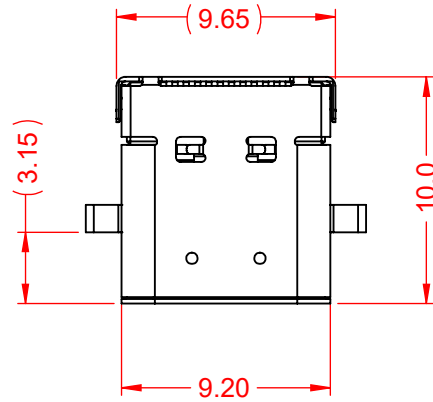


TOLERANCE UNLESS OTHERWISE SPECIFIED	
.X	±0.25
.XX	±0.13
.XXX	±0.05

THIS IS A C.A.D. GENERATED DRAWING  
DO NOT MAKE MANUAL REVISIONS TO MASTER.



ISSUE NUMBER	
ORIGINAL	①



**NOTE:**  
**ELECTRICAL SPECIFICATIONS:**  
**CURRENT RATING:** 5A  
**CONTACT RESISTANCE:** 40mΩ MAX.  
**INSULATOR RESISTANCE:** 100MΩ min.  
**DIELECTRIC WITHSTANDING VOLTAGE:** 100V AC  
**OPERATING TEMPERATURE:** -40°C ~ 80°C

**MATERIAL & FINISH:**  
**SHELL:** STAINLESS STEEL, NICKEL PLATED  
**HOUSING:** LCP, BLACK IN COLOUR, UL94V-0  
**CONTACTS:** COPPER ALLOY, MATTE TIN PLATED TAILS, GOLD FLASH PLATED ON CONTACT AREA

### 690 SERIES RECEPTACLES USB TYPE-C 24 PIN OPTION

ACAD REFERENCE NO.: 698C124-X15-211	
DRAWN: C.B	DATE: December 23, 2020
CHECKED:	DATE:
SCALE: 3:1	SHEET 1 OF 2
DRAWING NUMBER: 698C124-X15-211	ISSUE
PART NUMBER: 698C124-215-211	1



THIS SERIES FULLY CONFORMS TO  
THE EUROPEAN UNION DIRECTIVES  
2011/65/EU FOR RoHS COMPLIANCY.



YOUR CONNECTION TO QUALITY & SERVICE

EDAC INC  
TORONTO, ONTARIO  
CANADA

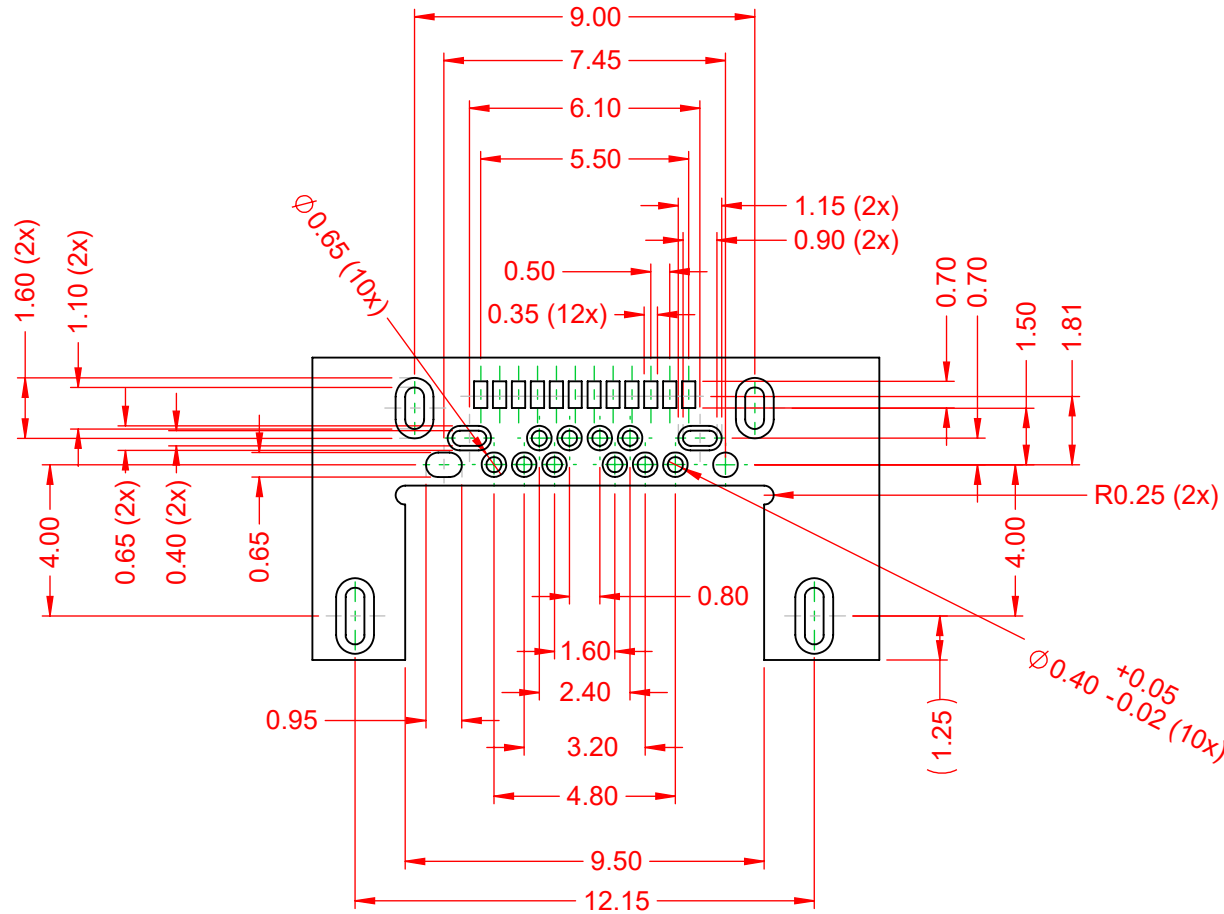
THESE DRAWINGS AND SPECIFICATIONS  
ARE THE PROPERTY OF EDAC INC., AND  
SHALL NOT BE REPRODUCED, OR COPIED  
OR USED AS THE BASIS FOR THE  
MANUFACTURE OR SALE OF APPARATUS  
WITHOUT WRITTEN PERMISSION.

TOLERANCE UNLESS OTHERWISE SPECIFIED	
.X	±0.25
.XX	±0.13
.XXX	±0.05

THIS IS A C.A.D. GENERATED DRAWING  
DO NOT MAKE MANUAL REVISIONS TO MASTER.



ISSUE NUMBER	
ORIGINAL	①



RECOMMEND P.C.B LAYOUT (COMPONENT SIDE)  
TOLERANCE: ±0.05

### 690 SERIES RECEPTACLES USB TYPE-C 24 PIN OPTION

ACAD REFERENCE NO.: 698C124-X15-211	
DRAWN: C.B	DATE: December 23, 2020
CHECKED:	DATE:
SCALE: 5:1	SHEET 2 OF 2
DRAWING NUMBER: 698C124-X15-211	ISSUE
PART NUMBER: 698C124-215-211	1



THIS SERIES FULLY CONFORMS TO  
THE EUROPEAN UNION DIRECTIVES  
2011/65/EU FOR RoHS COMPLIANCY.



YOUR CONNECTION TO QUALITY & SERVICE

EDAC INC  
TORONTO, ONTARIO  
CANADA

THESE DRAWINGS AND SPECIFICATIONS  
ARE THE PROPERTY OF EDAC INC., AND  
SHALL NOT BE REPRODUCED, OR COPIED  
OR USED AS THE BASIS FOR THE  
MANUFACTURE OR SALE OF APPARATUS  
WITHOUT WRITTEN PERMISSION.