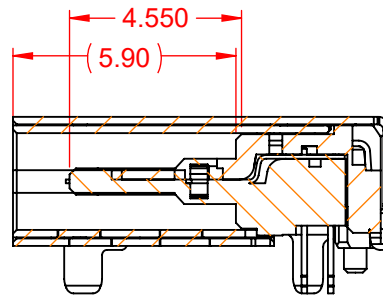
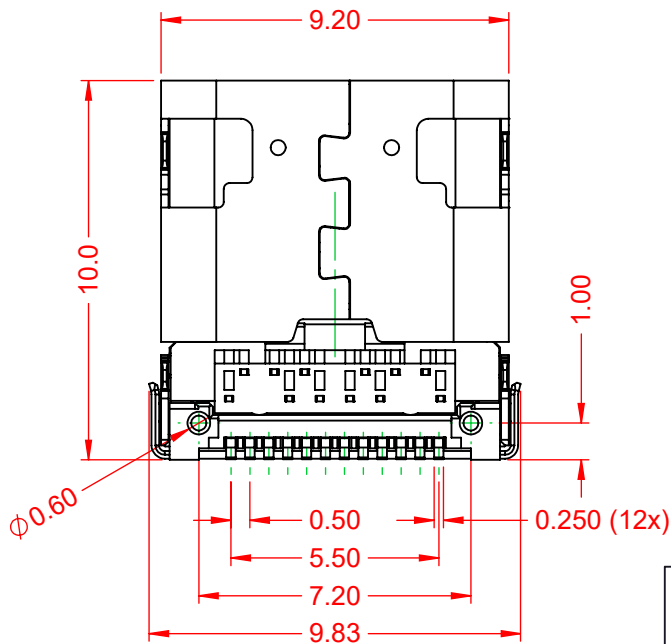
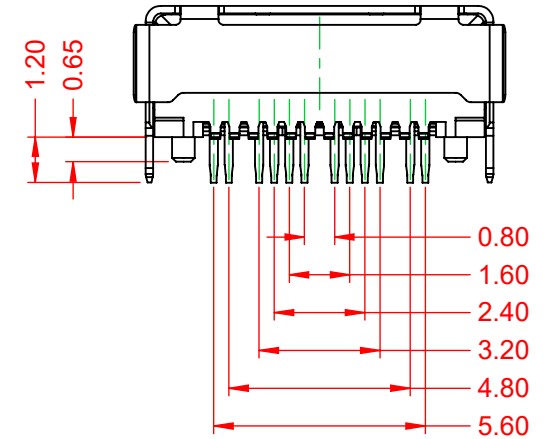
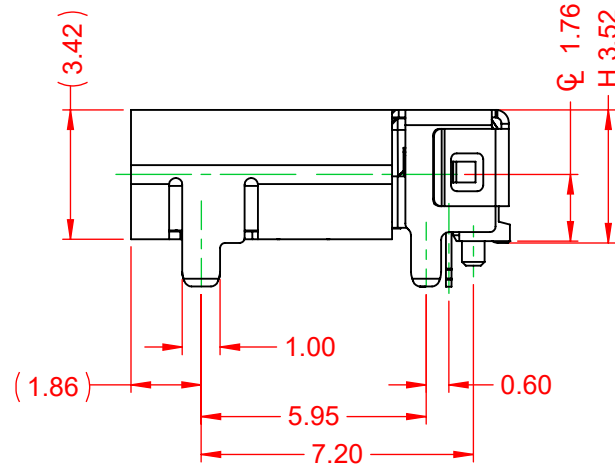
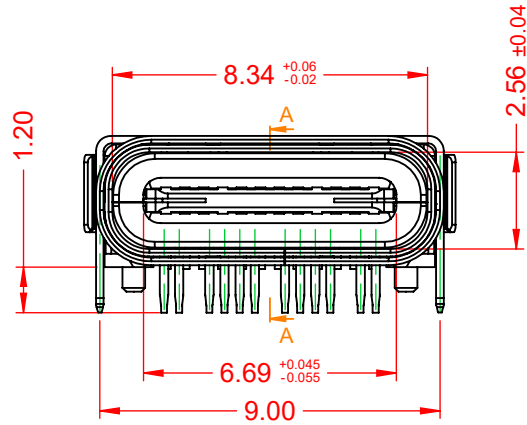


| TOLERANCE<br>UNLESS OTHERWISE<br>SPECIFIED |       |
|--|-------|
| .X   | ±0.25 |
| .XX  | ±0.20 |
| .XXX                                       | ±0.10 |

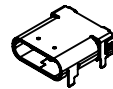
THIS IS A C.A.D. GENERATED DRAWING  
DO NOT MAKE MANUAL REVISIONS TO MASTER.



| ISSUE NUMBER |   |
|--------------|---|
| ORIGINAL     | 1 |



SECTION A-A



**NOTE:**  
ELECTRICAL SPECIFICATIONS:  
CURRENT RATING: 3A  
CONTACT RESISTANCE: 40mΩ MAX.  
INSULATOR RESISTANCE: 100MΩ min.  
DIELECTRIC WITHSTANDING VOLTAGE: 100V AC  
OPERATING TEMPERATURE: -40°C ~ 85°C

**MATERIAL & FINISH:**  
SHELL: STAINLESS STEEL, NICKEL PLATED  
HOUSING: LCP, BLACK IN COLOUR, UL94V-0  
CONTACTS: COPPER ALLOY, 15μ" GOLD PLATED

| PIN | SIGNAL | PIN | SIGNAL |
|-----|--------|-----|--------|
| A1  | GND    | B12 | GND    |
| A2  | SSTXp1 | B11 | SSRXp1 |
| A3  | SSTXn1 | B10 | SSRXn1 |
| A4  | VBUS   | B9  | VBUS   |
| A5  | CC1    | B8  | SBU2   |
| A6  | Dp1    | B7  | Dn2    |
| A7  | Dn1    | B6  | Dp2    |
| A8  | SBU1   | B5  | CC2    |
| A9  | VBUS   | B4  | VBUS   |
| A10 | SSRXn2 | B3  | SSTXn2 |
| A11 | SSRXp2 | B2  | SSTXp2 |
| A12 | GND    | B1  | GND    |



THIS SERIES FULLY CONFORMS TO  
THE EUROPEAN UNION DIRECTIVES  
2011/65/EU FOR RoHS COMPLIANCY.



YOUR CONNECTION TO QUALITY & SERVICE

EDAC INC  
TORONTO, ONTARIO  
CANADA

THESE DRAWINGS AND SPECIFICATIONS  
ARE THE PROPERTY OF EDAC INC., AND  
SHALL NOT BE REPRODUCED, OR COPIED  
OR USED AS THE BASIS FOR THE  
MANUFACTURE OR SALE OF APPARATUS  
WITHOUT WRITTEN PERMISSION.

### 690 SERIES RECEPTACLES USB TYPE-C 24 PIN OPTION

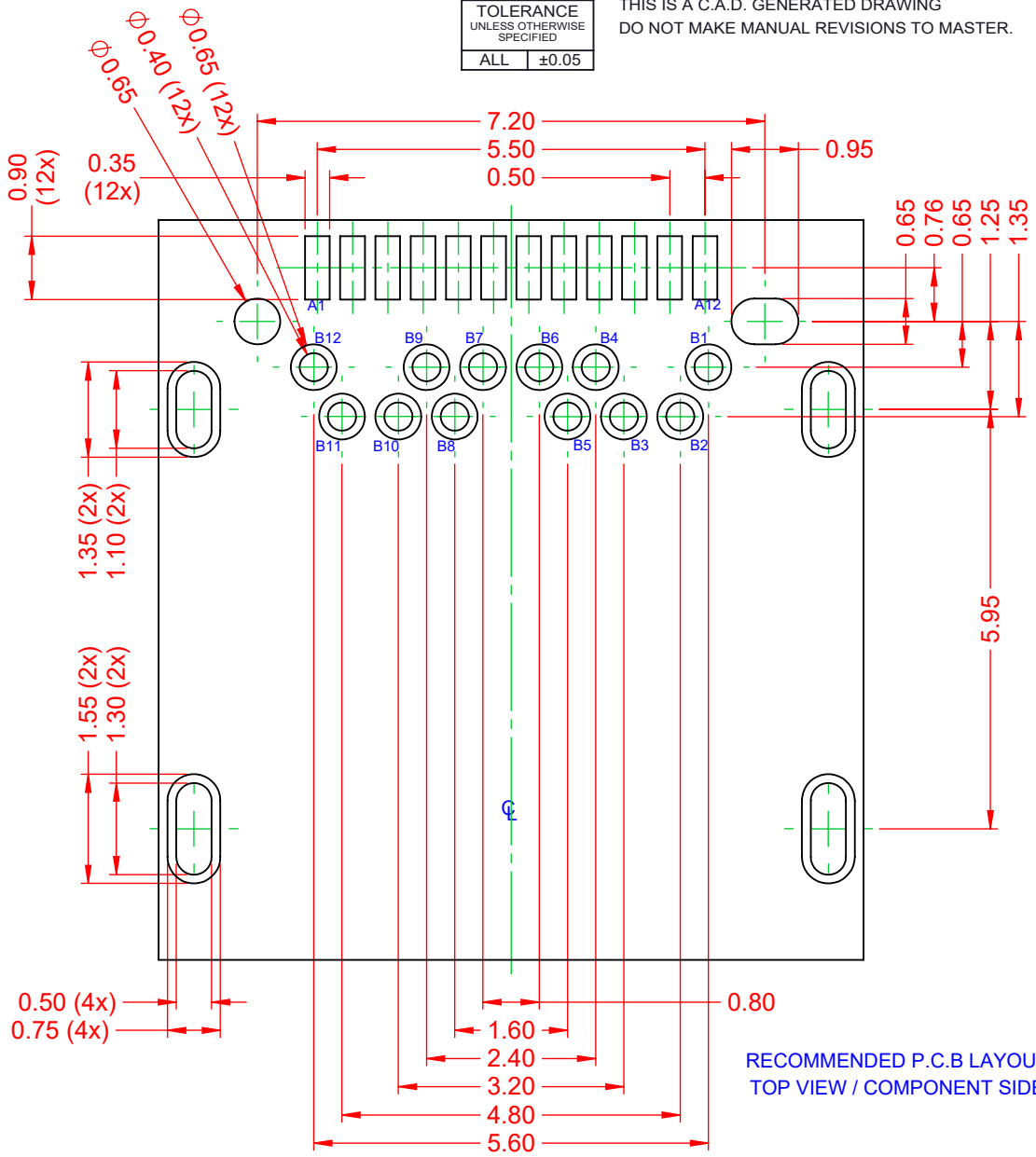
|                                     |                         |
|-------------------------------------|-------------------------|
| ACAD REFERENCE NO.: 698C124-X08-211 |                         |
| DRAWN: C.B                          | DATE: December 23, 2020 |
| CHECKED:                            | DATE:                   |
| SCALE: 5:1                          | SHEET 1 OF 2            |
| DRAWING NUMBER: 698C124-X08-211     | ISSUE                   |
| PART NUMBER: 698C124-508-211        | 1                       |

TOLERANCE  
UNLESS OTHERWISE  
SPECIFIED  
ALL ±0.05

THIS IS A C.A.D. GENERATED DRAWING  
DO NOT MAKE MANUAL REVISIONS TO MASTER.



|              |   |
|--------------|---|
| ISSUE NUMBER | 1 |
| ORIGINAL     |   |



RECOMMENDED P.C.B LAYOUT  
TOP VIEW / COMPONENT SIDE

|  |  |                                     |                         |
|--|--|-------------------------------------|-------------------------|
| <p>690 SERIES RECEPTACLES USB<br/>TYPE-C 24 PIN OPTION</p>   |  | ACAD REFERENCE NO.: 698C124-X08-211 |                         |
|  |  | DRAWN: C.B                          | DATE: December 23, 2020 |
| <p>EDAC INC<br/>TORONTO, ONTARIO<br/>CANADA<br/>YOUR CONNECTION TO QUALITY &amp; SERVICE</p>   |  | CHECKED:                            | DATE:                   |
|  |  | SCALE: 10:1                         | SHEET 2 OF 2            |
| <p>THESE DRAWINGS AND SPECIFICATIONS ARE THE PROPERTY OF EDAC INC., AND SHALL NOT BE REPRODUCED, OR COPIED OR USED AS THE BASIS FOR THE MANUFACTURE OR SALE OF APPARATUS WITHOUT WRITTEN PERMISSION.</p> |  |                                     | ISSUE                   |
| DRAWING NUMBER: 698C124-X08-211  |  |                                     | 1                       |
| PART NUMBER: 698C124-508-211   |  |                                     |                         |



THIS SERIES FULLY CONFORMS TO THE EUROPEAN UNION DIRECTIVES 2011/65/EU FOR RoHS COMPLIANCY.