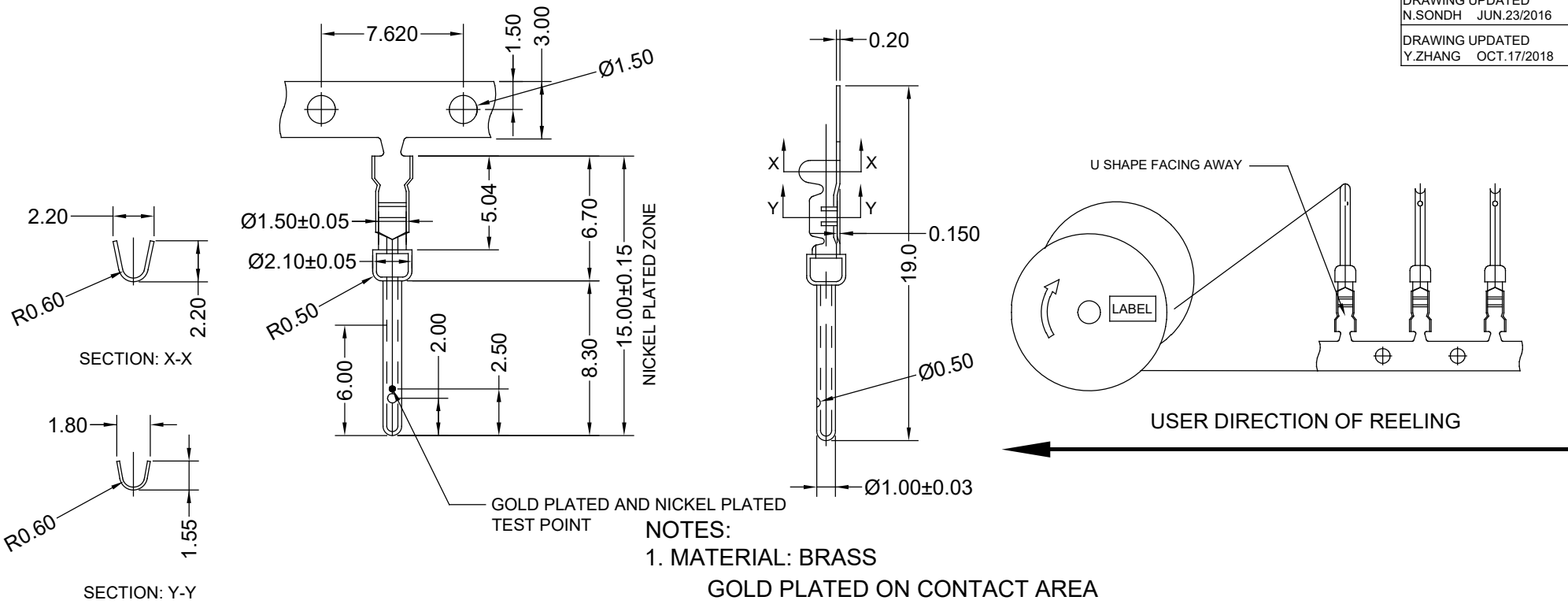


THIS IS A C.A.D. GENERATED DRAWING
DO NOT MAKE MANUAL REVISIONS TO MASTER.



ISSUE NUMBER	
ORIGINAL	①
NICKEL PLATING WAS TIN PLATING R.STA.MONICA JUN.24/2015	②
DRAWING UPDATED N.SONDH JUN.23/2016	③
DRAWING UPDATED Y.ZHANG OCT.17/2018	④



NOTES:

1. MATERIAL: BRASS

GOLD PLATED ON CONTACT AREA
NICKEL PLATED ON CRIMP AREA

PART NO.

627-290-001
627-590-001
627-690-001

GOLD PLATING

GOLD FLASH PLATING ON MATING AREA, NICKEL IN CRIMP AREA
10µIN OF GOLD PLATING OVER 50µIN OF NICKEL PLATING
30µIN OF GOLD PLATING OVER 50µIN OF NICKEL PLATING

2. MATCH WITH 627-0XX-010-200 CRIMP LOAD D-SUB CONNECTOR
3. DIMENSION: MM [INCHES]

4.ELECTRICAL SPECS

WIRE RANGE: 20~26AWG
OPERATING TEMPERATURE: -55°C ~ 105°C
CURRENT RATING: 3A PER CONTACT
VOLTAGE RATING: 250V MAX.
CONTACT RESISTANCE: 25mΩ MAX.

**627 SERIES TERMINAL
CRIMP AND LOAD PIN**

ACAD REFERENCE NO.: 627-290-001

DRAWN: R.STA.MONICA

DATE: JUN.18/2015

CHECKED:

DATE:

PART NUMBER

SEE PART NO.

SHEET 1 OF 1

DRAWING NUMBER

627-290-001

ISSUE

4



THIS SERIES FULLY CONFORMS TO THE
EUROPEAN UNION DIRECTIVES AND
2011/65/EU FOR RoHS COMPLIANCY.



YOUR CONNECTION TO QUALITY & SERVICE

EDAC INC
TORONTO, ONTARIO
CANADA

THESE DRAWINGS AND SPECIFICATIONS
ARE THE PROPERTY OF EDAC INC., AND
SHALL NOT BE REPRODUCED, OR COPIED
OR USED AS THE BASIS FOR THE
MANUFACTURE OR SALE OF APPARATUS
WITHOUT WRITTEN PERMISSION.