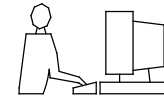
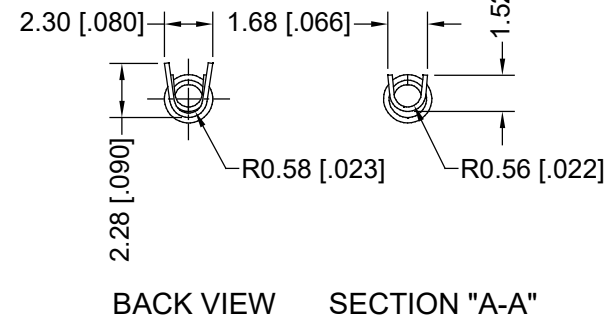
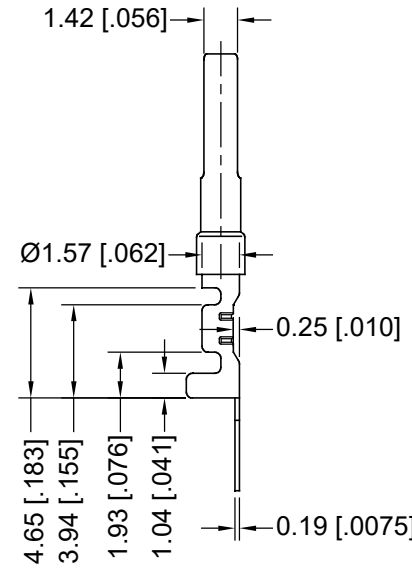
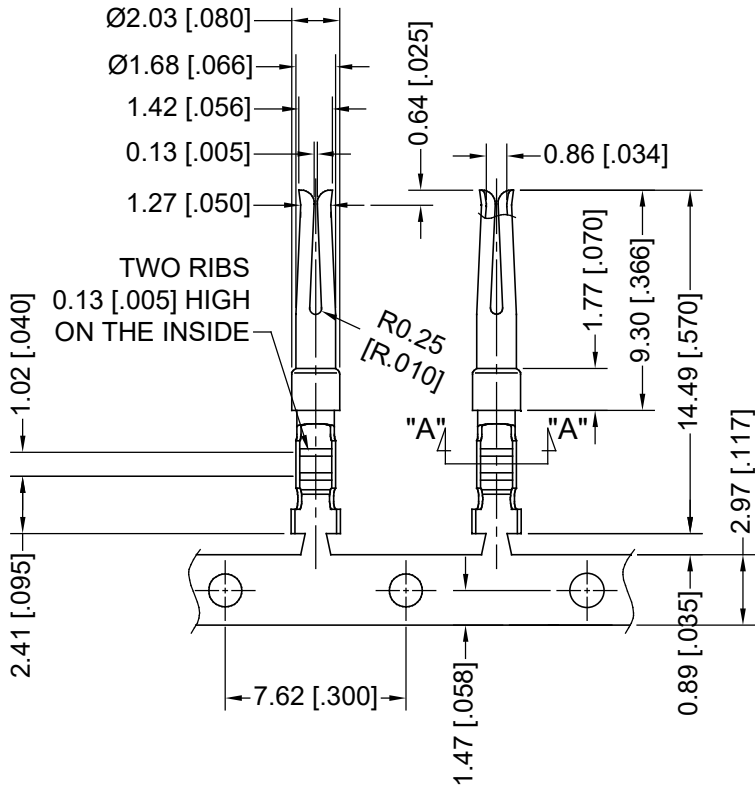


THIS IS A C.A.D. GENERATED DRAWING
DO NOT MAKE MANUAL REVISIONS TO MASTER.



ISSUE NUMBER	
ORIGINAL	①
NICKEL PLATING WAS TIN PLATING R.STA.MONICA	JUN.24/2015 ②
BRASS WAS PHOSPHOR BRONZE R.STA.MONICA	SEPT.03/2015 ③
ADD WIRE GAUGE RANGE IN NOTES Y.ZHANG	NOV.23/2018 ④



CONTACTS TO FEED OFF REEL IN THIS DIRECTION

NOTES:

1. MATERIAL:

BRASS, C2680R-H, T=0.20mm
GOLD PLATED INSIDE 1.90 [.075] MIN FROM TOP
NICKEL PLATED ON CRIMP AREA

PART NO.

628-292-001
628-592-001
628-692-001

GOLD PLATING

GOLD FLASH PLATING ON MATING AREA, NICKEL IN CRIMP AREA
10µIN OF GOLD PLATING OVER 50µIN OF NICKEL PLATING
30µIN OF GOLD PLATING OVER 50µIN OF NICKEL PLATING

2. MATCH WITH 628-0XX-010-000 CRIMP LOAD D-SUB CONNECTOR

3. DIMENSION: MM [INCHES]

4. WIRE GAUGE RANGE: 28~22 AWG

628 SERIES TERMINAL
CRIMP AND LOAD SOCKET

ACAD REFERENCE NO.: 628-292-001

DRAWN: R.STA.MONICA DATE: JUN.10/2015

CHECKED: DATE:

PART NUMBER
SEE PART NO. SHEET 1 OF 1

DRAWING NUMBER
628-292-001 ISSUE
4



THIS SERIES FULLY CONFORMS TO THE EUROPEAN UNION DIRECTIVES AND 2011/65/EU FOR RoHS COMPLIANCE.



EDAC INC
TORONTO, ONTARIO
CANADA

YOUR CONNECTION TO QUALITY & SERVICE

THESE DRAWINGS AND SPECIFICATIONS ARE THE PROPERTY OF EDAC INC., AND SHALL NOT BE REPRODUCED, OR COPIED OR USED AS THE BASIS FOR THE MANUFACTURE OR SALE OF APPARATUS WITHOUT WRITTEN PERMISSION.