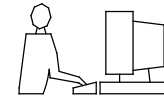
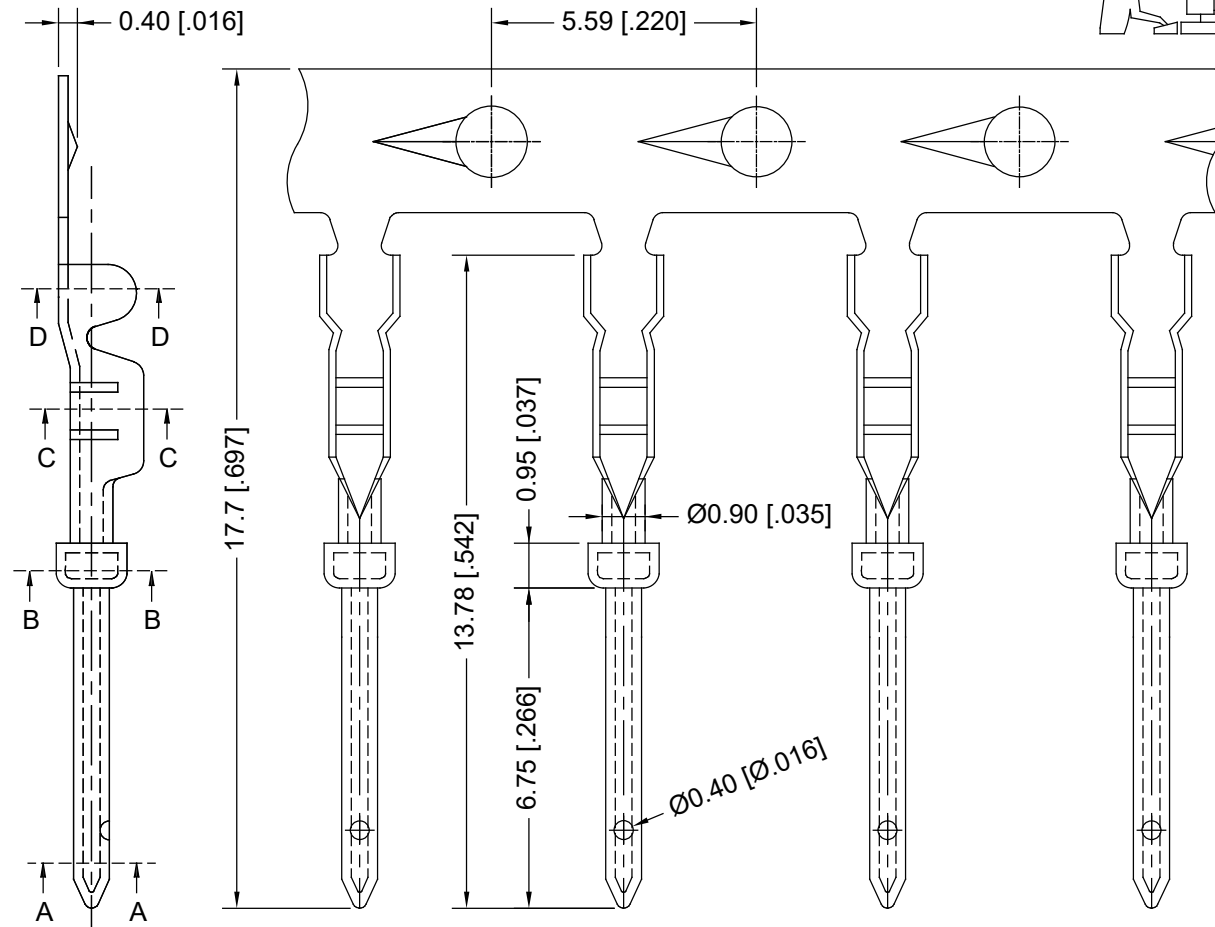
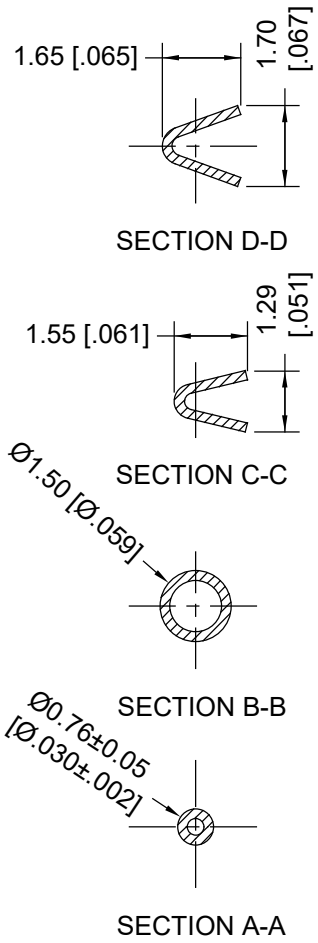


THIS IS A C.A.D. GENERATED DRAWING  
DO NOT MAKE MANUAL REVISIONS TO MASTER.



ISSUE NUMBER	
ORIGINAL	①
ADD WIRE GAUGE NOTE	
P.M.	JUL. 05/2020 ②



NOTES:

1. MATERIAL: BRASS, C2680R-H, T=0.20mm  
GOLD PLATING ON MATING AREA, NICKEL PLATED ON CRIMP AREA

PART NO.	GOLD PLATING
637-292-271	GOLD FLASH PLATING
637-292-371	15u" GOLD PLATING
637-292-671	30u" GOLD PLATING



THIS SERIES FULLY CONFORMS TO THE EUROPEAN UNION DIRECTIVES AND 2011/65/EU FOR RoHS COMPLIANCY.

2. MATCH WITH 637-0XX-010-911 CRIMP LOAD HIGH DENSITY D-SUB CONNECTOR
3. DIMENSION: MM [INCHES]
4. WIRE GAUGE: AWG24-26

637 HIGH DENSITY SERIES TERMINAL  
CRIMP AND LOAD, PLUG

ACAD REFERENCE NO.: 637-292-271

DRAWN: R.STA.MONICA DATE: JUN.17/2016

CHECKED: DATE:

PART NUMBER  
SEE PART NO. SHEET 1 OF 1

DRAWING NUMBER  
637-292-271 ISSUE  
2

**EDAC** EDAC INC  
TORONTO, ONTARIO  
CANADA  
YOUR CONNECTION TO QUALITY & SERVICE

THESE DRAWINGS AND SPECIFICATIONS ARE THE PROPERTY OF EDAC INC., AND SHALL NOT BE REPRODUCED, OR COPIED OR USED AS THE BASIS FOR THE MANUFACTURE OR SALE OF APPARATUS WITHOUT WRITTEN PERMISSION.