		161 Alden Road, Units 7 & 8, Markham, Ontario Canada L3R 3W7 Tel: +1 416 754-3322 Fax: +1 416-754-3299 Email: support@edac.net http://www.edac.net ENGINEERING CHANGE NOTICE	
Originator:	Mit Patel	Date:	Document Number
Phone No.	416-754-3322	April 24, 2024	20240424-00
Email Address:	mpatel@edac.net		
Department	Quality	Revision Number	SHEET
		1	1 of 3

CHANGE TYPE:

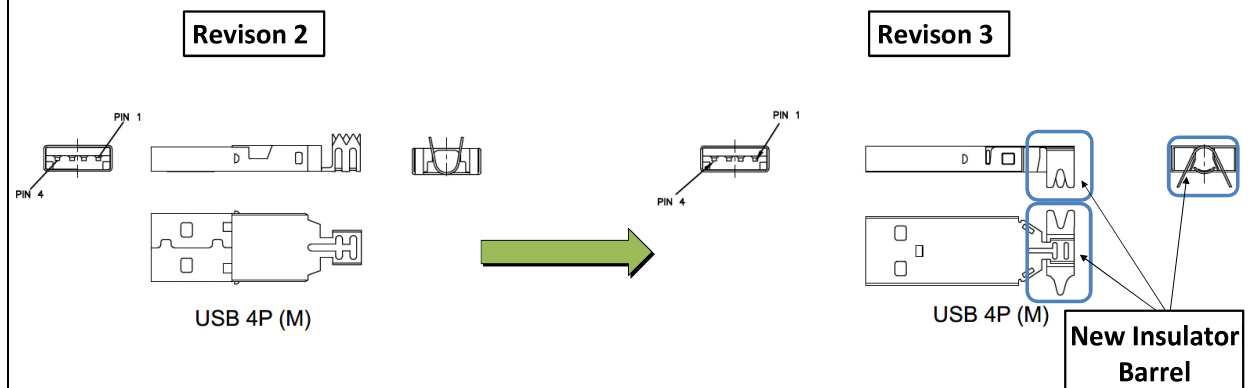
- ☐ **CLASS I** Customer notification and approval required prior to implementation
☒ **CLASS II** Customer notification only, no approval required
☐ **CLASS III** No customer notification required

REASON OF CHANGE

New Shell Tooling for Part# 690-W04-260-013
New Contact Material is Brass

DESCRIPTION OF CHANGE:

Contact Material: Brass was Phosphor Bronze.
Part# 690-W04-260-013's shell tooling has been worn out and new shell tool with design improvement has been implemented. New shell shell have insulator barrel on both top and bottom shell. There will be no form, fit and function affects by this change.
See the below design improvement:



PARTIES AFFECTED

- ☒ Customer
☒ Distributors
☐ Suppliers
- ☐ NORCOMP
☐ MH
☒ ETW
- ☒ ECA
☒ EDG
☒ EDAC UK

KEY TARGET DUE DATES IF CHANGE IS APPROVED TO PROCEED (check if applicable and show target dates as known)

- ☐ Submit Quote
☐ Prod. Trial Run
☐ Run at Rate
- ☐ PPAP from Supplier
☐ MRD of Production Parts
☐ UL / CSA / RoHS / REACH

ACKNOWLEDGEMENT FOR ECN INITIATION: (OPTIONALS)

- ☐ Tooling Rep
☐ Mfg Eng Rep
☐ Production Rep
☐ Materials Rep
☐ Quality Rep
- ☐ Marketing Rep
☐ Facilities Rep
☐ Sales Rep.
☐ Product Eng. Rep.
☐ Purchasing Rep
- Marco Lamanna
Esther Marothy
Mit Patel

STATUS

APPROVED
CCS CHANGE REQUEST #

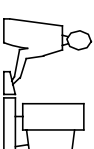
APPROVALS FOR ECN INITIATION (REQUIRED)

- ☒ General Manager
☒ Engineering Manager
☒ Business Development
- ☒ Quality Engineer
☒ Engineer
- Bob Sakitkovski
Ronnie Sta Monica
Kobie Samuels
- Mit Patel
Jacky Lai
- 5-17-24

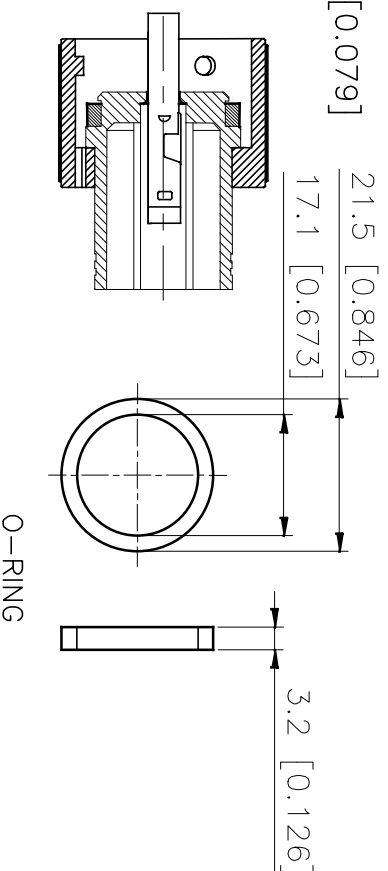
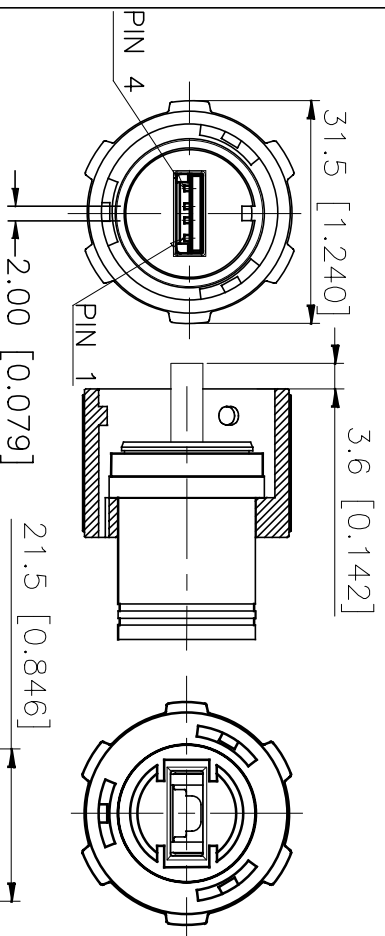
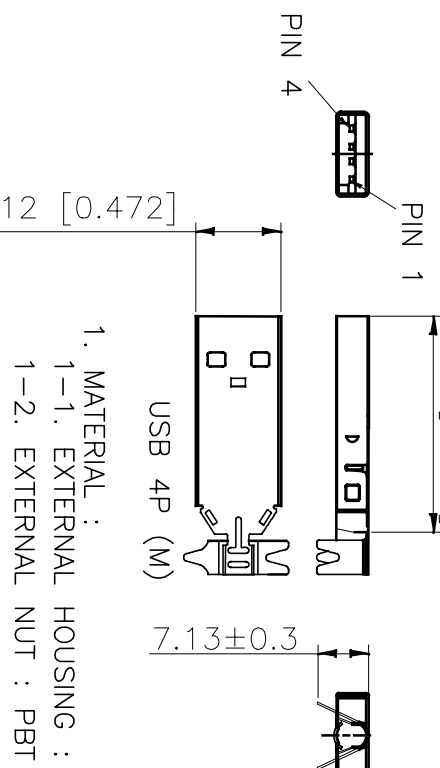
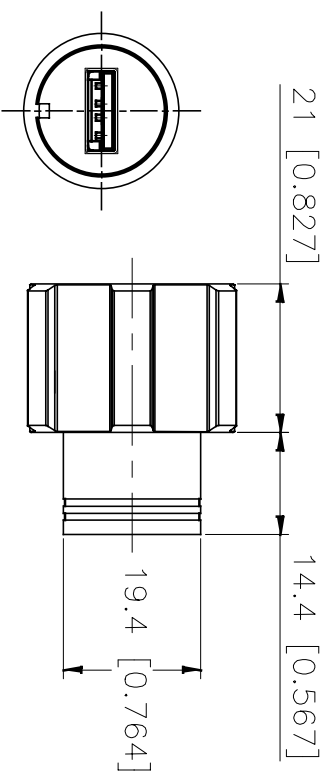
REJECTED
Change REJECTED by:
Rejected Date:

TOLERANCE UNLESS OTHERWISE
SPECIFIED IN MM:
0.0 ± 0.20
0.00 ± 0.10
0.000 ± 0.05

THIS IS A C.A.D. GENERATED DRAWING
DO NOT MAKE MANUAL REVISIONS TO MASTER.



ISSUE NUMBER	
①	ORIGINAL
②	COLOR WHITE WAS BLACK ADD NOTES 3 & 4 R.S.TA/MONICA JUN.18/2014
③	CONTACT MATERIAL: BRASS WAS PH12Z UNFILL NOTES ADD PHASE 2 J.L. APR.23/2024



2. FINISH :

2-1. CONTACT : GOLD 3u" ON CONTACT AREA

SOLDER TAILS: TIN 100u"

UNDER PLATE : NICKEL PLATING

2-2. SHELL: NICKEL OVER ALL

3. ELECTRICAL SPECIFICATIONS:

3-1. RATED CURRENT : 1A

3-2. RATED VOLTAGE : 30V

3-3. WATER PROOF : IP67

4. ENVIRONMENTAL:

4-1. DURABILITY: 1500 CYCLES

4-2. MATING FORCE: 35N (3.57KGF) MAX

4-3. UNMATING FORCE: 10N MIN. INITIAL

4-4. OPERATING TEMPERATURE: -20°C ~ +85°C

WATERPROOF USB TYPE A, 4P

(MALE)



EDAC INC
TORONTO, ONTARIO
CANADA

THESE DRAWINGS AND SPECIFICATIONS
ARE THE PROPERTY OF EDAC INC. AND
SHALL NOT BE REPRODUCED, OR COPIED
OR USED AS THE BASIS FOR THE
MANUFACTURE OR SALE OF APPARATUS
WITHOUT WRITTEN PERMISSION.

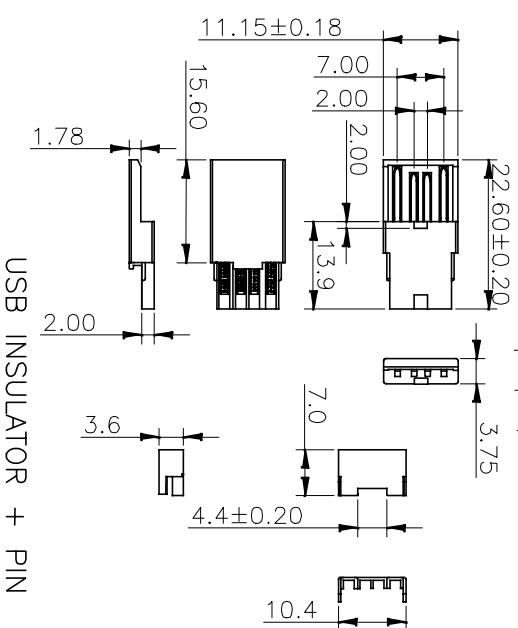
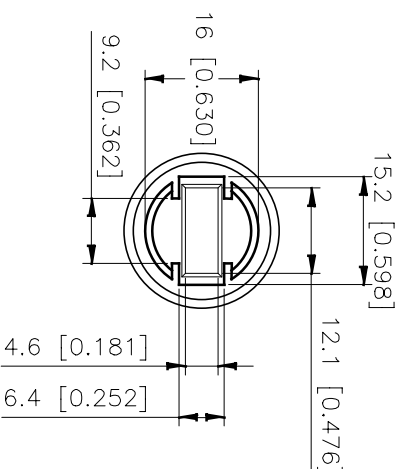
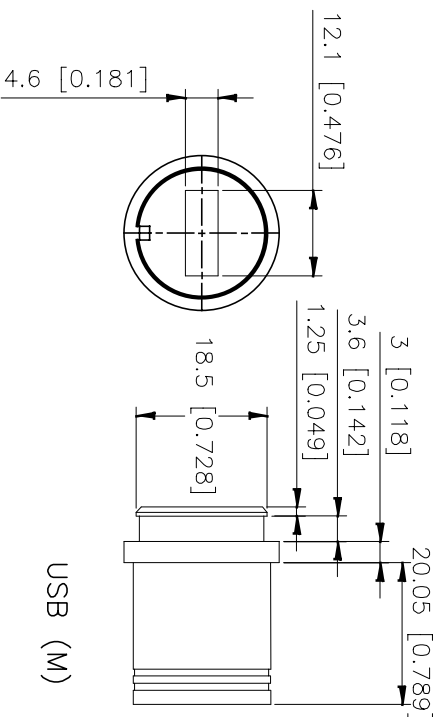
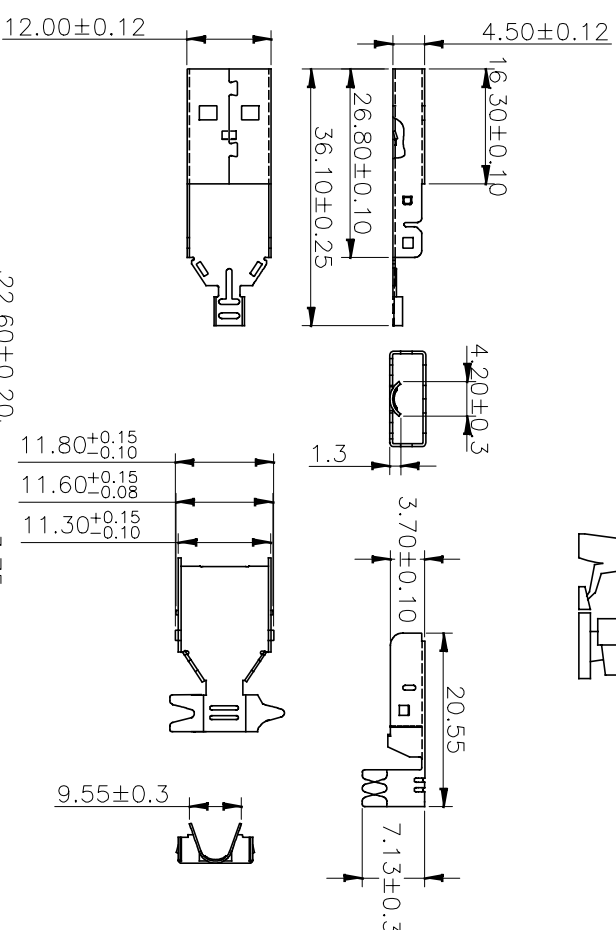
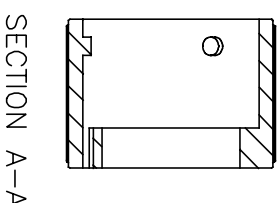
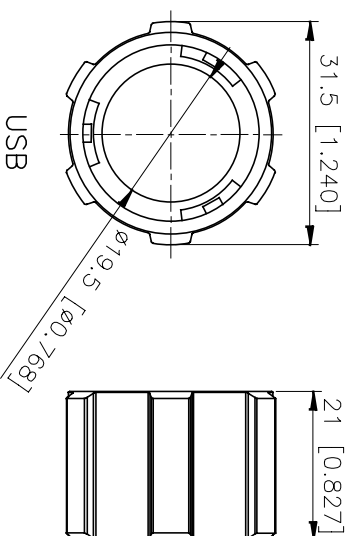
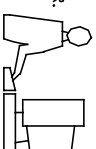
YOUR CONNECTION TO QUALITY & SERVICE

PART NUMBER	690-W04-260-013	SHEET 1 OF 2
DRAWING NUMBER	690-W04-260-013	ISSUE 3



THIS SERIES FULLY CONFORMS TO
THE EUROPEAN UNION DIRECTIVES
2011/65/EU FOR ROHS COMPLIANCY.

THIS IS A C.A.D. GENERATED DRAWING
DO NOT MAKE MANUAL REVISIONS TO MASTER.



USB INSULATOR + PIN

WATERPROOF USB TYPE A, 4P

(MALE)

ACAD REFERENCE NO.: 690-W04-260-013

DRAWN: R.STAMONICA DATE: APR.07/2014

CHECKED: R.S.M. DATE: APR.23/2024

PART NUMBER

690-W04-260-013

SHEET 2 OF 2

DRAWING NUMBER

690-W04-260-013

ISSUE

3



THIS SERIES FULLY CONFORMS TO
THE EUROPEAN UNION DIRECTIVES
2011/65/EU FOR ROHS COMPLIANCY.



EDAC INC
TORONTO, ONTARIO
CANADA

YOUR CONNECTION TO QUALITY & SERVICE

THESE DRAWINGS AND SPECIFICATIONS
ARE THE PROPERTY OF EDAC INC. AND
SHALL NOT BE REPRODUCED, OR COPIED
OR USED AS THE BASIS FOR THE
MANUFACTURE OR SALE OF APPARATUS
WITHOUT WRITTEN PERMISSION.