

		161 Alden Road, Units 7 & 8, Markham, Ontario Canada L3R 3W7 Tel: +1 416 754-3322 Fax: +1 416-754-3299 Email: support@edac.net http://www.edac.net ENGINEERING CHANGE NOTICE	
Originator:	Mit Patel	Date:	Document Number
Phone No.	416-754-3322	January 23, 2025	20250123-00
Email Address:	mpatel@edac.net		
Department	Quality	Revision Number	SHEET
		1	1 of 11

CHANGE TYPE:

☐ **CLASS I** Customer notification and approval required prior to implementation
☒ **CLASS II** Customer notification only, no approval required
☐ **CLASS III** No customer notification required

REASON OF CHANGE

Correctional Update

DESCRIPTION OF CHANGE:

1) Part Number **686L022210010E** underwent some correctional updates. Please see the redline drawing on page 2. The changes will not affect Form, Fit, or Function.

2) Part Number **685A1821220113Q** underwent some correctional updates. Please see the redline drawing on page 3. The changes will not affect Form, Fit, or Function.

3) Part Number **686K0551210113E** underwent some correctional updates. Please see the redline drawing on page 4. The changes will not affect Form, Fit, or Function.

4) Part Number **686A1821F20111E** underwent some correctional updates. Please see the redline drawing on page 5. The changes will not affect Form, Fit, or Function.

5) Part Number **685K0551450113E** underwent some correctional updates. Please see the redline drawing on page 6. These changes will provide equal application after some dimensions change.

PARTIES AFFECTED

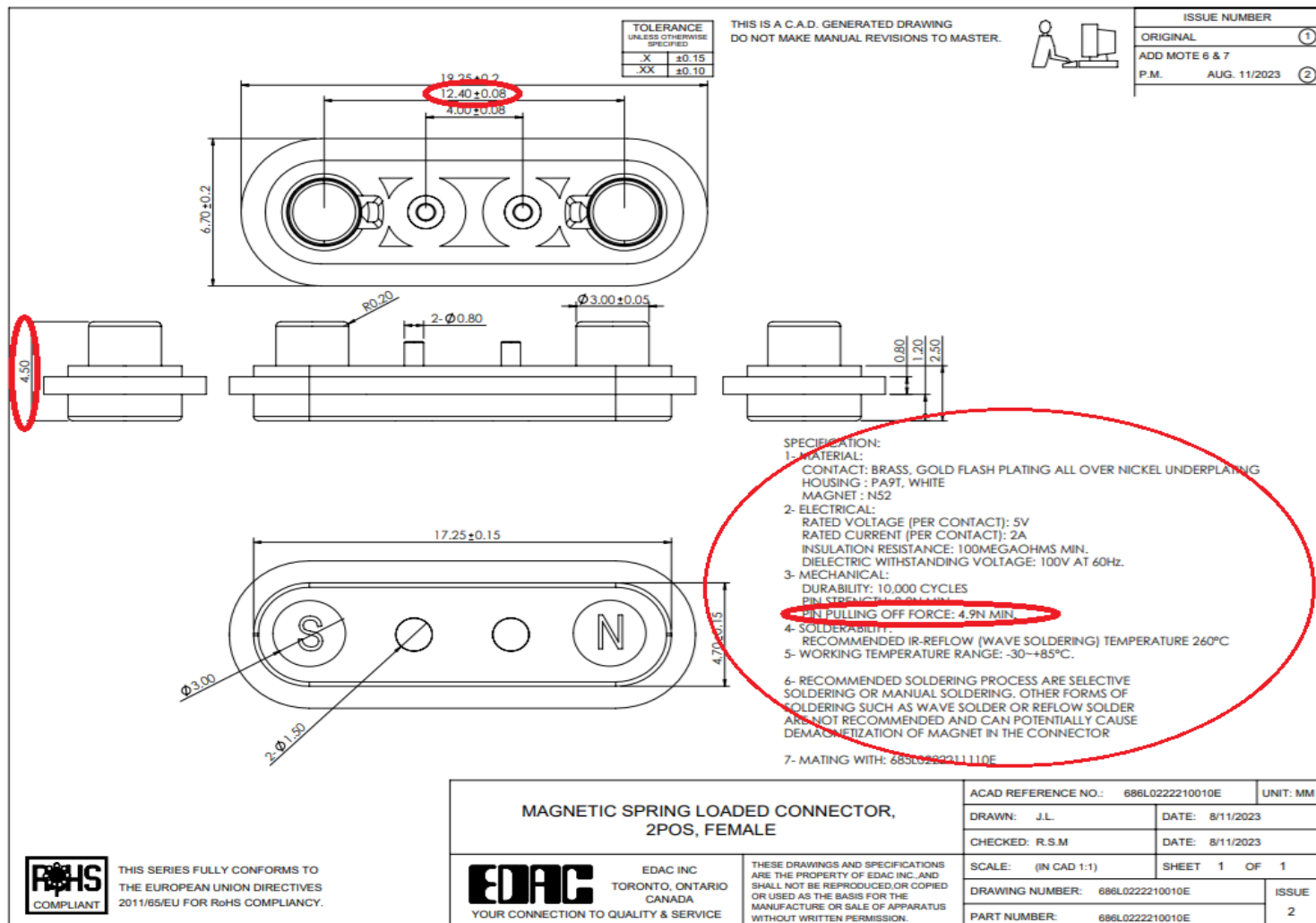
<input checked="" type="checkbox"/> Customer <input checked="" type="checkbox"/> Distributors <input type="checkbox"/> Suppliers	<input type="checkbox"/> NORCOMP <input type="checkbox"/> MH <input checked="" type="checkbox"/> ETW	<input checked="" type="checkbox"/> ECA <input checked="" type="checkbox"/> EDG <input checked="" type="checkbox"/> EDAC UK
--	--	---

KEY TARGET DUE DATES IF CHANGE IS APPROVED TO PROCEED (check if applicable and show target dates as known)

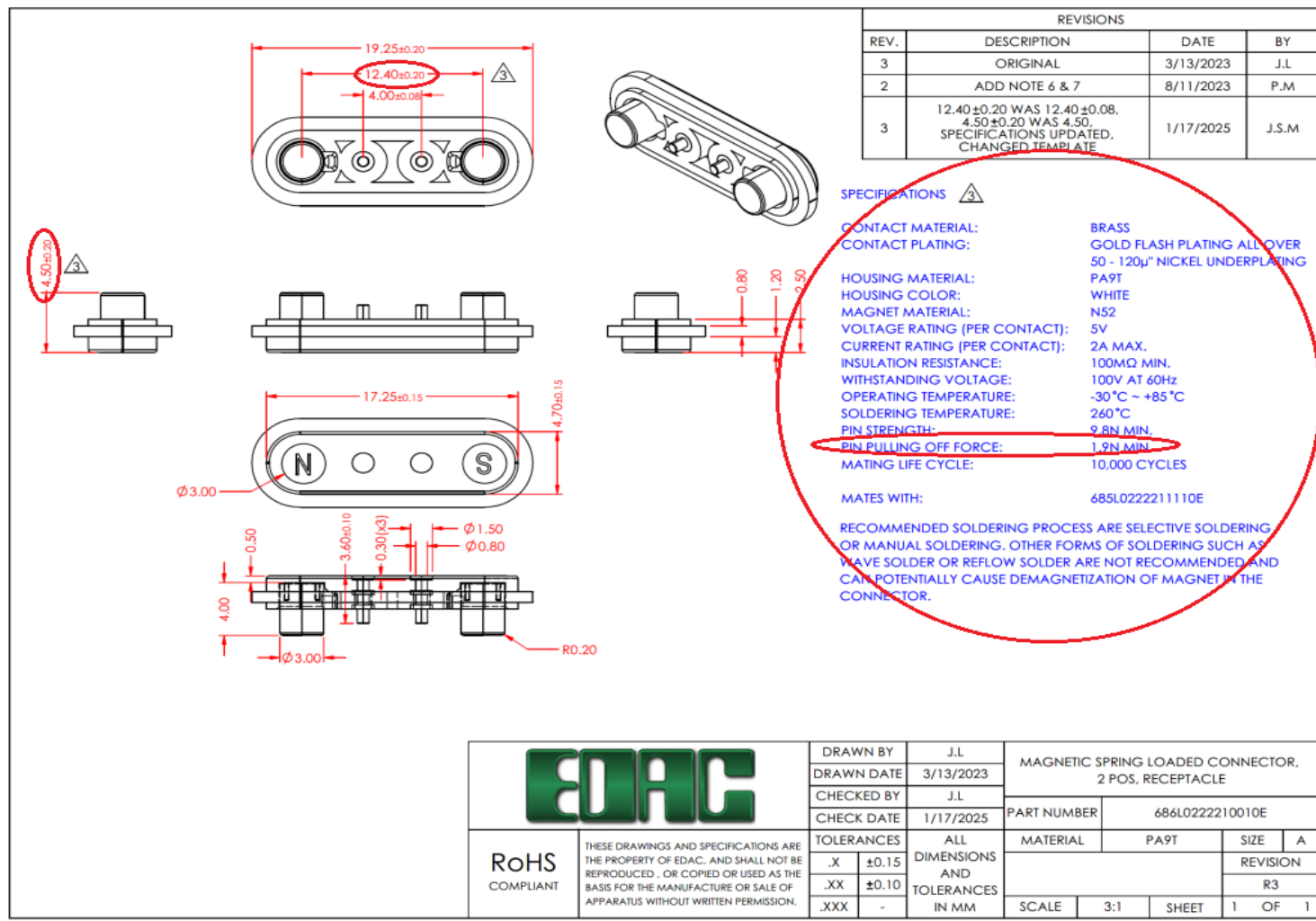
<input type="checkbox"/> Submit Quote _____ <input type="checkbox"/> Prod. Trial Run _____ <input type="checkbox"/> Run at Rate _____	<input type="checkbox"/> PPAP from Supplier _____ <input type="checkbox"/> MRD of Production Parts _____ <input type="checkbox"/> UL / CSA / RoHS / REACH _____
---	---

ACKNOWLEDGEMENT FOR ECN INITIATION: (OPTIONALS)		STATUS
<input type="checkbox"/> Tooling Rep _____ <input type="checkbox"/> Mfg Eng Rep _____ <input type="checkbox"/> Production Rep _____ <input type="checkbox"/> Materials Rep _____ <input checked="" type="checkbox"/> Quality Rep <u>Mit Patel</u>	<input type="checkbox"/> Marketing Rep <u>Marco Lamanna</u> <input type="checkbox"/> Facilities Rep _____ <input type="checkbox"/> Sales Rep. <u>Esther Marothy</u> <input type="checkbox"/> Product Eng. Rep. _____ <input type="checkbox"/> Purchasing Rep _____	APPROVED <input checked="" type="checkbox"/> CCS CHANGE REQUEST #
APPROVALS FOR ECN INITIATION (REQUIRED)		REJECTED <input type="checkbox"/> Change REJECTED by: Rejected Date:
<input checked="" type="checkbox"/> General Manager <u>Bob Sakitkovski</u> <input checked="" type="checkbox"/> Engineering Manager <u>Ronnie Sta Monica</u> <input checked="" type="checkbox"/> Business Development Manager <u>K. Samuels</u>	<input checked="" type="checkbox"/> Quality Engineer <u>Mit Patel</u> <input checked="" type="checkbox"/> Engineer <u>Jacky Lai</u>	

R2



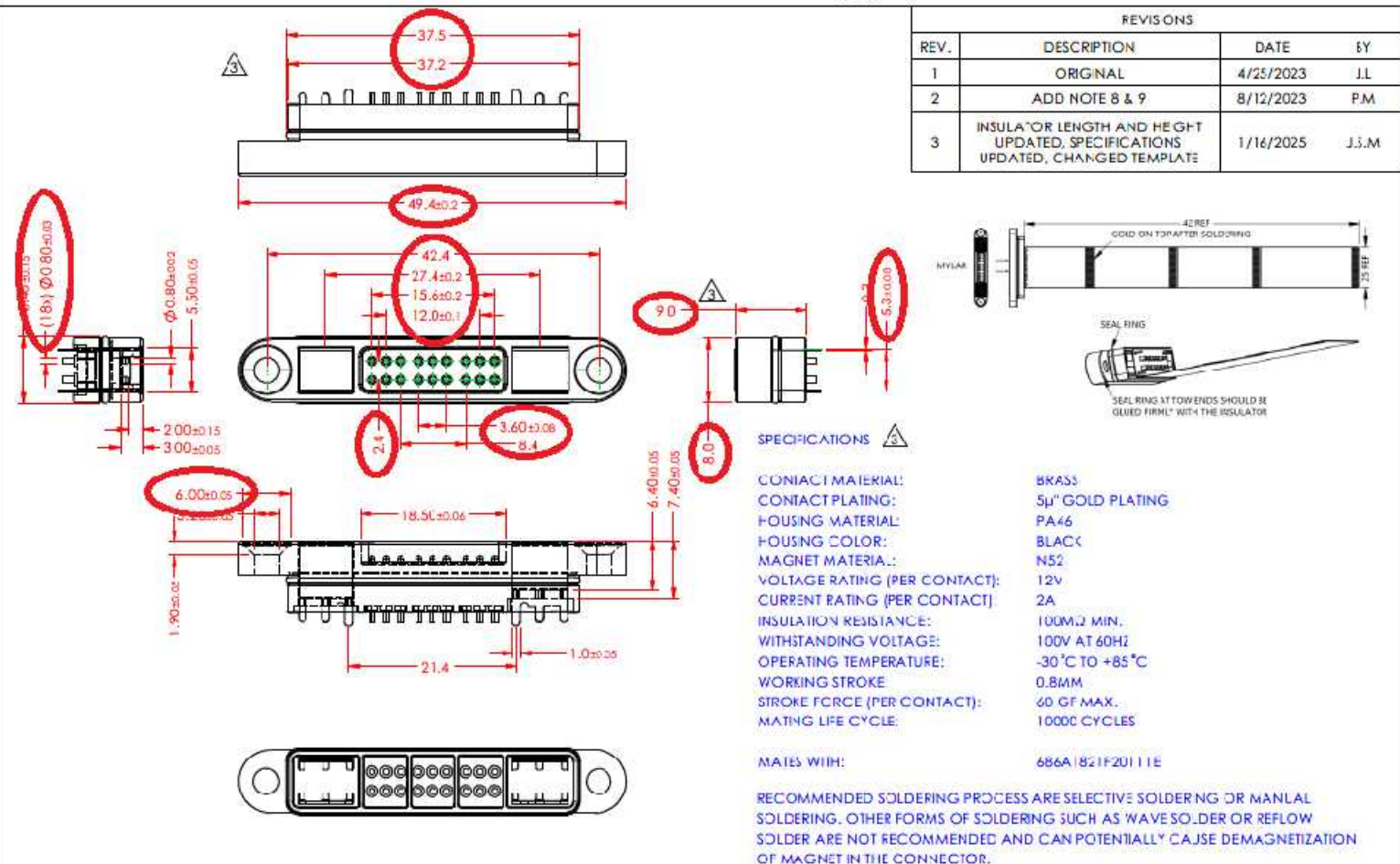
R3



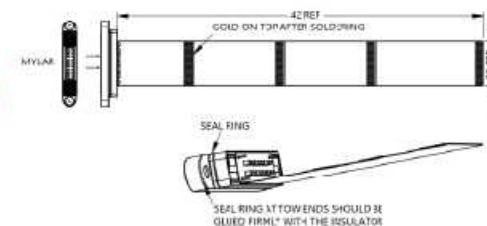
R3

ISSUE NUMBER		
ORIGINAL		①
ADD NOTE 8 & 9		
P.M.	AUG. 12/2023	②

9- MATING WITH: 686A1821F20111E



REVISIONS			
REV.	DESCRIPTION	DATE	BY
1	ORIGINAL	4/25/2023	J.L
2	ADD NOTE 8 & 9	8/12/2023	P.M
3	INSULATOR LENGTH AND HEIGHT UPDATED, SPECIFICATIONS UPDATED, CHANGED TEMPLATE	1/16/2025	J.S.M



SPECIFICATIONS

CONTACT MATERIAL:	5KAS5
CONTACT PLATING:	5μ" GOLD PLATING
HOUSING MATERIAL:	PA46
HOUSING COLOR:	BLACK
MAGNET MATERIAL:	N52
VOLTAGE RATING (PER CONTACT):	12v
CURRENT RATING (PER CONTACT):	2A
INSULATION RESISTANCE:	100MΩ MIN.
WITHSTANDING VOLTAGE:	100V AT 60HZ
OPERATING TEMPERATURE:	-30 °C TO +85 °C
WORKING STROKE	0.8MM
STROKE FORCE (PER CONTACT):	60 GF MAX.
MATING LIFE CYCLE:	10,000 CYCLES

MATES WITH: 686A | 821F20 | 11E

RECOMMENDED SOLDERING PROCESS ARE SELECTIVE SOLDERING OR MANUAL SOLDERING. OTHER FORMS OF SOLDERING SUCH AS WAVE SOLDER OR REFLOW SOLDER ARE NOT RECOMMENDED AND CAN POTENTIALLY CAUSE DEMAGNETIZATION OF MAGNET IN THE CONNECTOR.

<div><div>EDAC INC TORONTO, ONTARIO CANADA</div><div>YOUR CONNECTION TO QUALITY & SERVICE</div></div>		MAGNETIC SPRING LOADED CONNECTOR, 18POS, MALE		ACAD REFERENCE NO.: 685A1821220113Q		UNIT: MM
		DRAWN: J.L.		DATE: 8/12/2023		
		CHECKED: R.S.M		DATE: 8/12/2023		
<div>THESE DRAWINGS AND SPECIFICATIONS ARE THE PROPERTY OF EDAC INC. AND SHALL NOT BE REPRODUCED OR COPIED OR USED AS THE BASIS FOR THE MANUFACTURE OR SALE OF APPARATUS WITHOUT WRITTEN PERMISSION.</div>		SCALE: (IN CAD 1:1)		SHEET 1 OF 1		
		DRAWING NUMBER: 685A1821220113Q				ISSUE 2
		PART NUMBER: 685A1821220113Q				



RoHS
COMPLIANT

THESE DRAWINGS AND SPECIFICATIONS ARE THE PROPERTY OF EDAC, AND SHALL NOT BE REPRODUCED, OR COPIED OR USED AS THE BASIS FOR THE MANUFACTURE OR SALE OF APPARATUS WITHOUT WRITTEN PERMISSION.

DRAWN BY	J.L	MAGNETIC SPRING LOADED CONNECTOR, 18 PCS, PLLG			
DRAWN DATE	4/25/2023				
CHECKED BY	J.L.	PART NUMBER 485A1B21220113Q			
CHECK DATE	01/22/2025				
TO TOLERANCES	ALL DIMENSIONS AND TOLERANCES IN MM	MATERIAL	PA46	SIF	A
.X ±0.15				REVISION	
.XX ±0.10				R3	
.XXX -		SCALE	I.S.	SHEET	I OF I



THIS SERIES FULLY CONFORMS TO
THE EUROPEAN UNION DIRECTIVES
2011/65/EU FOR RoHS COMPLIANCY.

R2

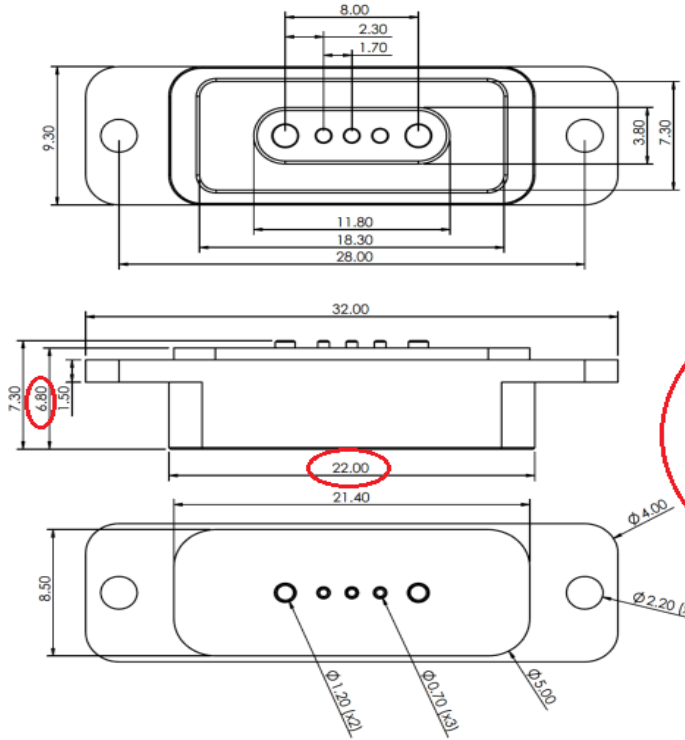
R3

TOLERANCE UNLESS OTHERWISE SPECIFIED	
X	±0.15
XX	±0.10

THIS IS A C.A.D. GENERATED DRAWING
DO NOT MAKE MANUAL REVISIONS TO MASTER.



ISSUE NUMBER	
ORIGINAL	①
ADD NOTE 4 & 5	
P.M.	AUG. 13/2023
	②



SPECIFICATION:
1- MATERIAL:
CONTACT: BRASS GOLD FLASH PLATING ALL OVER NICKEL UNDERPLATING
HOUSING: LCP, BLACK
MAGNET: N52
2- ELECTRICAL:
RATED VOLTAGE (PER CONTACT): 24V
RATED CURRENT (PER CONTACT): 5A
INSULATION RESISTANCE: 100MEGAOHMS MINIMUM
CONTACT RESISTANCE: 25mOHMS MAXIMUM
3- WORKING TEMPERATURE RANGE: -30° C--+85° C
4- RECOMMENDED SOLDERING PROCESS ARE SELECTIVE
SOLDERING OR MANUAL SOLDERING. OTHER FORMS OF
SOLDERING SUCH AS WAVE SOLDER OR REFLOW SOLDER
ARE NOT RECOMMENDED AND CAN POTENTIALLY CAUSE
DEMAGNETIZATION OF MAGNET IN THE CONNECTOR
5- MATING WITH: 685K0551450113E OR 687K05510501138

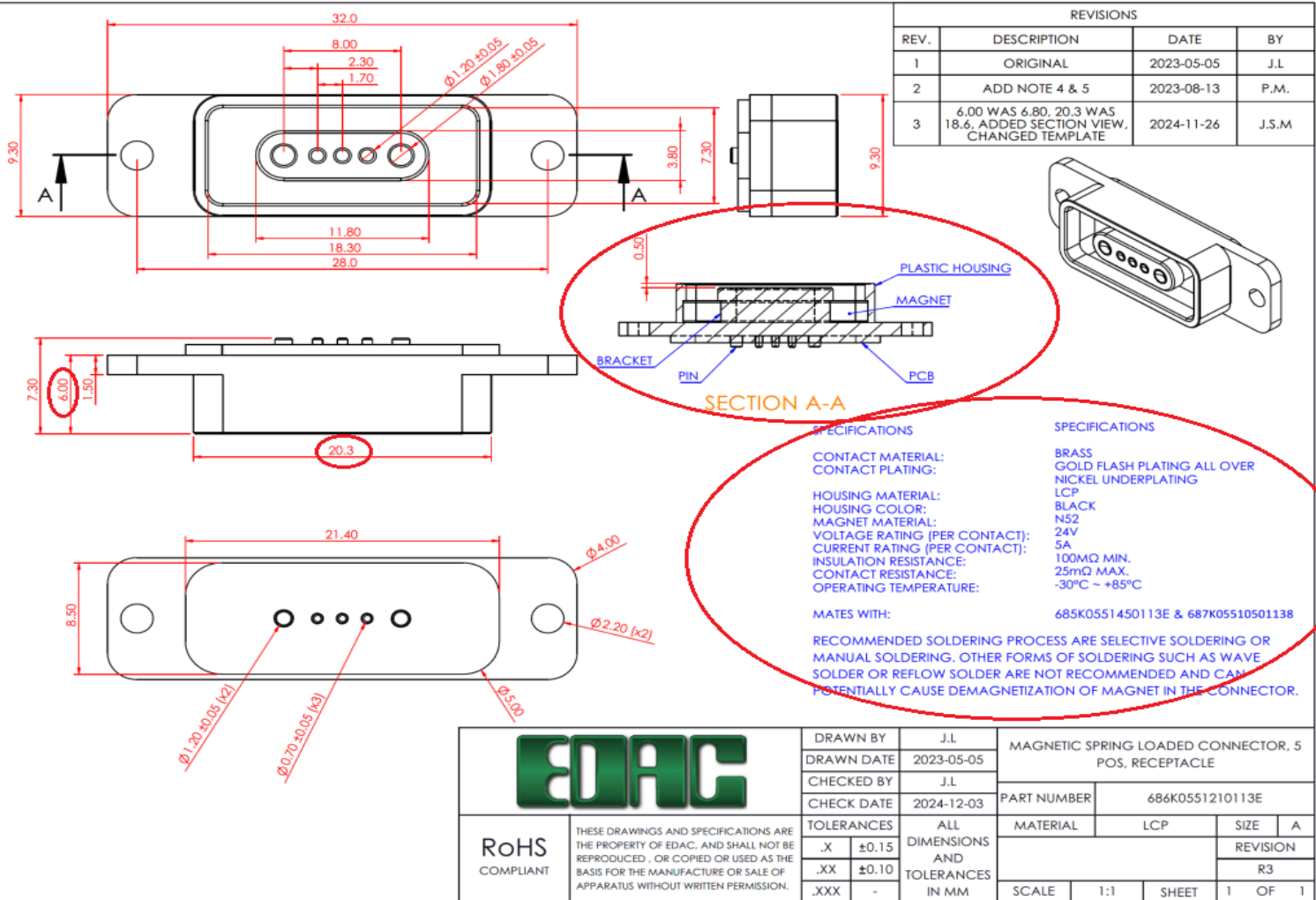
MAGNETIC SPRING LOADED CONNECTOR,
5POS, FEMALE



EDAC INC
TORONTO, ONTARIO
CANADA
YOUR CONNECTION TO QUALITY & SERVICE

THESE DRAWINGS AND SPECIFICATIONS
ARE THE PROPERTY OF EDAC INC. AND
SHALL NOT BE REPRODUCED, OR COPIED
OR USED AS THE BASIS FOR THE
MANUFACTURE OR SALE OF APPARATUS
WITHOUT WRITTEN PERMISSION.

ACAD REFERENCE NO.: 686K0551210113E		UNIT: MM
DRAWN: J.L.	DATE: 8/13/2023	
CHECKED: R.S.M	DATE: 8/13/2023	
SCALE: (IN CAD 1:1)	SHEET 1 OF 1	
DRAWING NUMBER: 686K0551210113E	ISSUE	
PART NUMBER: 686K0551210113E	2	



REVISIONS			
REV.	DESCRIPTION	DATE	BY
1	ORIGINAL	2023-05-05	J.L
2	ADD NOTE 4 & 5	2023-08-13	P.M.
3	6.00 WAS 6.80, 20.3 WAS 18.6, ADDED SECTION VIEW, CHANGED TEMPLATE	2024-11-26	J.S.M

SECTION A-A

SPECIFICATIONS

CONTACT MATERIAL:
CONTACT PLATING:
HOUSING MATERIAL:
HOUSING COLOR:
MAGNET MATERIAL:
VOLTAGE RATING (PER CONTACT):
CURRENT RATING (PER CONTACT):
INSULATION RESISTANCE:
CONTACT RESISTANCE:
OPERATING TEMPERATURE:

SPECIFICATIONS

BRASS
GOLD FLASH PLATING ALL OVER
NICKEL UNDERPLATING
LCP
BLACK
N52
24V
5A
100MQ MIN.
25mQ MAX.
-30°C ~ +85°C

MATES WITH:

685K0551450113E & 687K05510501138

RECOMMENDED SOLDERING PROCESS ARE SELECTIVE SOLDERING OR
MANUAL SOLDERING. OTHER FORMS OF SOLDERING SUCH AS WAVE
SOLDER OR REFLOW SOLDER ARE NOT RECOMMENDED AND CAN
POTENTIALLY CAUSE DEMAGNETIZATION OF MAGNET IN THE CONNECTOR.



RoHS
COMPLIANT

THESE DRAWINGS AND SPECIFICATIONS ARE
THE PROPERTY OF EDAC, AND SHALL NOT BE
REPRODUCED, OR COPIED OR USED AS THE
BASIS FOR THE MANUFACTURE OR SALE OF
APPARATUS WITHOUT WRITTEN PERMISSION.

DRAWN BY	J.L	MAGNETIC SPRING LOADED CONNECTOR, 5 POS, RECEPTACLE			
DRAWN DATE	2023-05-05				
CHECKED BY	J.L				
CHECK DATE	2024-12-03	PART NUMBER	686K0551210113E		
TOLERANCES	ALL DIMENSIONS AND TOLERANCES IN MM	MATERIAL	LCP	SIZE	A
.X	±0.15	REVISION			
.XX	±0.10	R3			
.XXX	-	SCALE	1:1	SHEET	1 OF 1

R2

TOLERANCE UNLESS OTHERWISE SPECIFIED	
.X	±0.15
.XX	±0.10

THIS IS A C.A.D. GENERATED DRAWING
DO NOT MAKE MANUAL REVISIONS TO MASTER.



ISSUE NUMBER	
ORIGINAL	①
ADD NOTE 4 & 5	
P.M.	AUG. 12/2023 ②

SPECIFICATION:

1- MATERIAL:

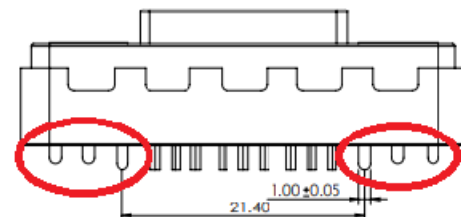
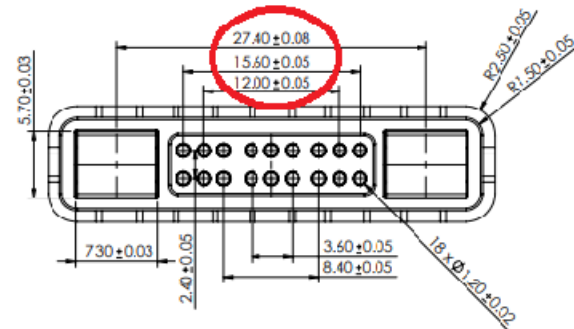
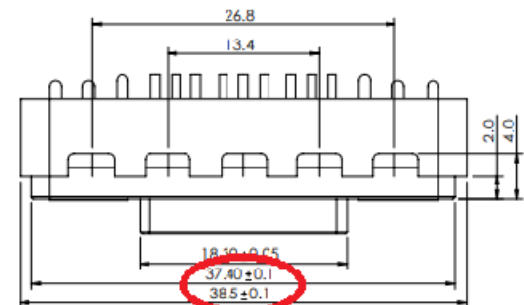
CONTACT: BRASS GOLD FLASH PLATING ALL OVER NICKEL UNDERPLATING
HOUSING: PA46 BLACK
MAGNET: N52

2- ELECTRICAL:

RATED VOLTAGE (PER CONTACT): 12V
RATED CURRENT (PER CONTACT): 2A
3- WORKING TEMPERATURE RANGE: -30~+85°C

4- RECOMMENDED SOLDERING PROCESS ARE SELECTIVE
SOLDERING OR MANUAL SOLDERING. OTHER FORMS OF
SOLDERING SUCH AS WAVE SOLDER OR REFLOW SOLDER
ARE NOT RECOMMENDED AND CAN POTENTIALLY CAUSE
DEMAGNETIZATION OF MAGNET IN THE CONNECTOR

5- MATING WITH: 685A1821220113Q



MAGNETIC SPRING LOADED CONNECTOR, 18POS, FEMALE



THESE DRAWINGS AND SPECIFICATIONS
ARE THE PROPERTY OF EDAC INC. AND
SHALL NOT BE REPRODUCED OR COPIED
OR USED AS THE BASIS FOR THE
MANUFACTURE OR SALE OF APPARATUS
WITHOUT WRITTEN PERMISSION.

ACAD REFERENCE NO.: 686A1821F20111E	UNIT: MM
DRAWN: J.L.	DATE: 8/12/2023
CHECKED: R.S.M	DATE: 8/12/2023
SCALE: (IN CAD 1:1)	SHEET 1 OF 1
DRAWING NUMBER: 686A1821F20111E	ISSUE 2
PART NUMBER: 686A1821F20111E	

R3

REVISIONS

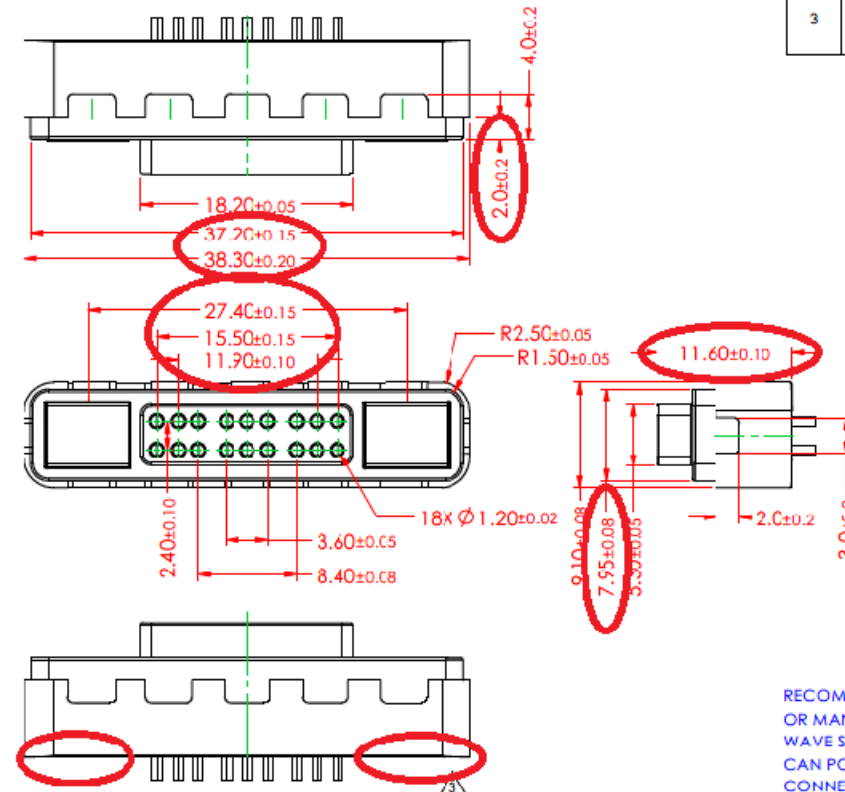
REV	DESCRIPTION	DATE	BY
1	ORIGINAL	2023-04-27	J.L
2	ADD NOTE 4 & 5	2023-08-12	P.M
3	REMOVE CONTACT TAILS. UPDATED CONTACT SPACING, HOUSING HEIGHT, SPECIFICATIONS AND LENGTH, CHANGED TEMPLATE	2024-12-04	J.L

SPECIFICATIONS

CONTACT MATERIAL:	BRASS
CONTACT PLATING:	GOLD PLATING 3μ
HOUSING MATERIAL:	PA46
HOUSING COLOR:	BLACK
MAGNET MATERIAL:	N52
VOLTAGE RATING (PER CONTACT):	12V
CURRENT RATING (PER CONTACT):	2A MAX.
INSULATION RESISTANCE:	100MΩ MIN.
WITHSTANDING VOLTAGE:	100V AT 60 HZ
OPERATING TEMPERATURE:	-30°C TO 85°C
WORKING STROKE:	N/A
STROKE FORCE (PER CONTACT):	N/A
MATING LIFE CYCLE:	10000

MATES WITH: 685A1821220113Q

RECOMMENDED SOLDERING PROCESS ARE SELECTIVE SOLDERING
OR MANUAL SOLDERING. OTHER FORMS OF SOLDERING SUCH AS
WAVE SOLDER OR REFLOW SOLDER ARE NOT RECOMMENDED AND
CAN POTENTIALLY CAUSE DEMAGNETIZATION OF MAGNET IN THE
CONNECTOR

RoHS
COMPLIANT

THESE DRAWINGS AND SPECIFICATIONS ARE
THE PROPERTY OF EDAC, AND SHALL NOT BE
REPRODUCED, OR COPIED OR USED AS THE
BASIS FOR THE MANUFACTURE OR SALE OF
APPARATUS WITHOUT WRITTEN PERMISSION.

DRAWN BY	J.L	MAGNETIC SPRING LOADED CONNECTOR, 18 POS, RECEPTACLE			
DRAWN DATE	2023-04-27				
CHECKED BY	J.L	PART NUMBER 686A1821F20111E			
CHECK DATE	2024-12-04				
TOLERANCES	.X ±0.15 .XX ±0.10 .XXX -	ALL DIMENSIONS AND TOLERANCES IN MM	MATERIAL	PA46	SIZE A REVISION R3
SCALE	2:1	SHEET	1	OF	1

R2

TOLERANCE UNLESS OTHERWISE SPECIFIED	
.X	±0.15
.XX	±0.10

THIS IS A C.A.D. GENERATED DRAWING
DO NOT MAKE MANUAL REVISIONS TO MASTER.



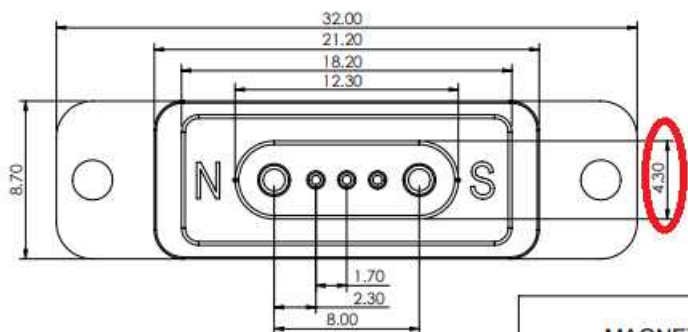
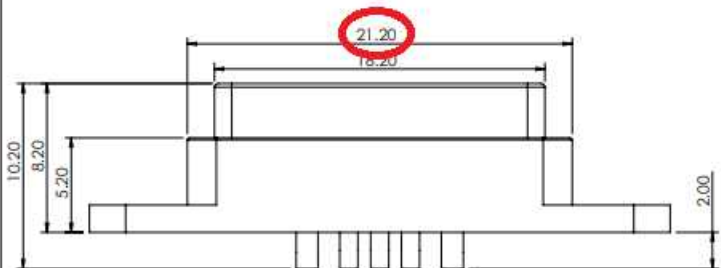
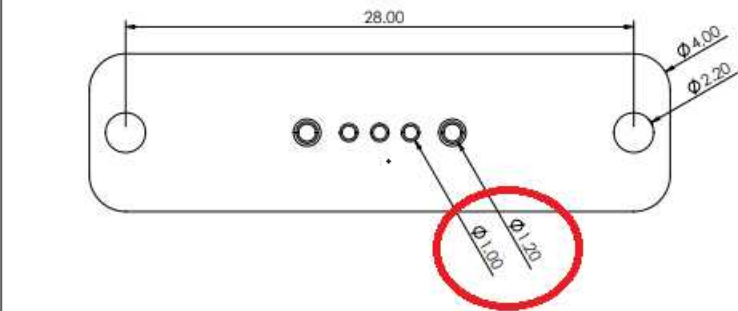
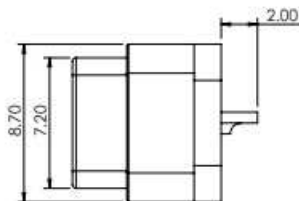
ISSUE NUMBER	
ORIGINAL	①
ADD NOTE 5 & 6	
P.M.	AUG. 13/2023 ②

SPECIFICATION:

- 1- MATERIAL:
CONTACT: BRASS GOLD FLASH PLATING ALL OVER NICKEL UNDERPLATING
HOUSING: LCP
MAGNET: N52
- 2- ELECTRICAL:
RATED VOLTAGE (PER CONTACT): 24V
RATED CURRENT (PER CONTACT): 5A
INSULATION RESISTANCE: 100MEGAOHMS MINIMUM
CONTACT RESISTANCE: 60mOHMS MAXIMUM
- 3- RECOMMENDED WORKING STROKE & FORCE: STROKE 1.2MM (PER CONTACT): 80gfMAX
- 4- WORKING TEMPERATURE RANGE: -30~+85° C

5- RECOMMENDED SOLDERING PROCESS ARE SELECTIVE
SOLDERING OR MANUAL SOLDERING. OTHER FORMS OF
SOLDERING SUCH AS WAVE SOLDER OR REFLOW SOLDER
ARE NOT RECOMMENDED AND CAN POTENTIALLY CAUSE
DEMAGNETIZATION OF MAGNET IN THE CONNECTOR

6- MATING WITH: 686K0551210113E

**MAGNETIC SPRING LOADED CONNECTOR,
4POS, MALE**

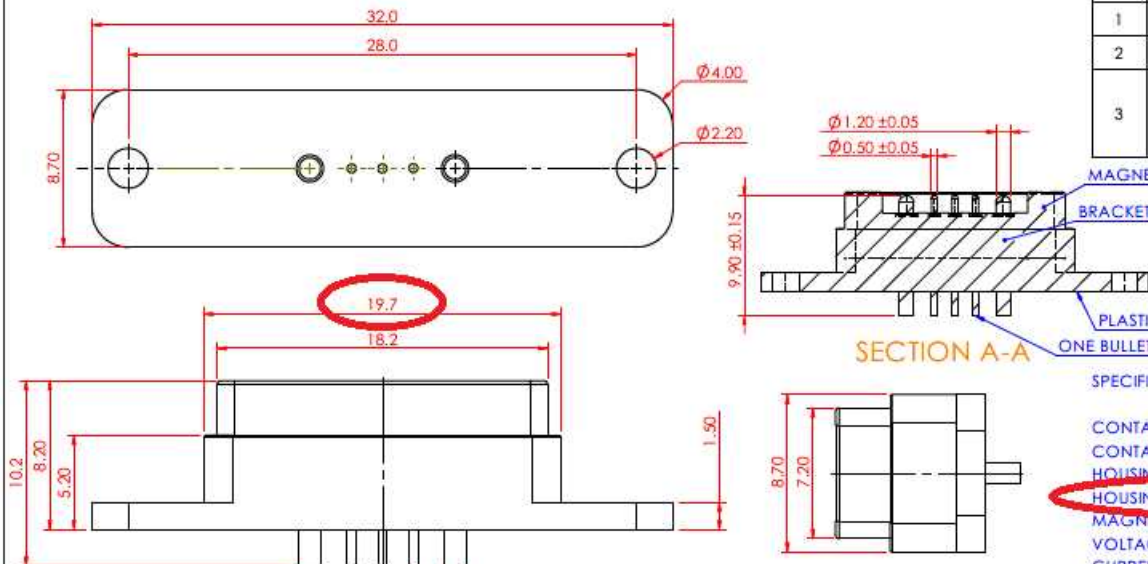
EDAC INC
TORONTO, ONTARIO
CANADA
YOUR CONNECTION TO QUALITY & SERVICE

THESE DRAWINGS AND SPECIFICATIONS
ARE THE PROPERTY OF EDAC INC. AND
SHALL NOT BE REPRODUCED, OR COPIED
OR USED AS THE BASIS FOR THE
MANUFACTURE OR SALE OF APPARATUS
WITHOUT WRITTEN PERMISSION.

ACAD REFERENCE NO.:	685K0551450113E	UNIT: MM
DRAWN: J.L.	DATE: 8/13/2023	
CHECKED: R.S.M	DATE: 8/13/2023	
SCALE: (IN CAD 1:1)	SHEET 1 OF 1	
DRAWING NUMBER: 685K0551450113E	ISSUE 2	
PART NUMBER: 685K0551450113E		

R3

REVISIONS			
REV.	DESCRIPTION	DATE	BY
1	ORIGINAL	2023-03-13	J.L
2	ADD NOTE 5 & 6	2023-08-13	P.M
3	19.7 WAS 21.2, 4.0 WAS 4.3, 0.5 WAS 1.0, 0.5±0.05 WAS 1.00, 1.20±0.05 WAS 1.20, ADD SECTION VIEW, SPECIFICATIONS ADDED, CHANGE TEMPLATE	2024-11-26	J.S.M

**SECTION A-A**

MAGNET
BRACKET
PLASTIC BODY
ONE BULLET NEEDLE

SPECIFICATIONS

CONTACT MATERIAL:	BRASS
CONTACT PLATING:	GOLD PLATING 5µ"
HOUSING MATERIAL:	LCP
HOUSING COLOR:	BLACK
MAGNET MATERIAL:	N52
VOLTAGE RATING (PER CONTACT):	24V
CURRENT RATING (PER CONTACT):	5A
INSULATION RESISTANCE:	100MΩ MIN.
WITHSTANDING VOLTAGE:	100V AT 60 HZ
CONTACT RESISTANCE:	60mΩ MAX.
OPERATING TEMPERATURE:	-30°C TO 85°C
WORKING STROKE:	1.2 MM
STROKE FORCE (PER CONTACT):	80 GF MAX
MATING LIFE CYCLE:	10000

MATES WITH: 686K0551250113E

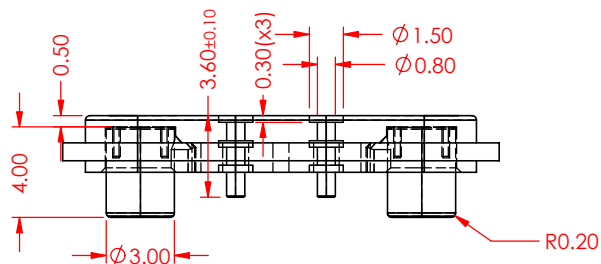
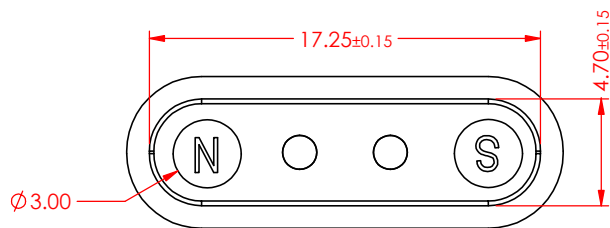
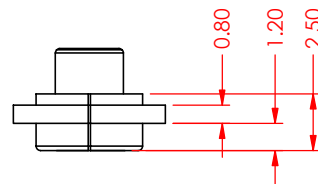
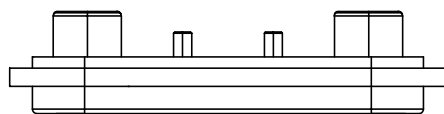
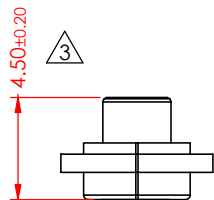
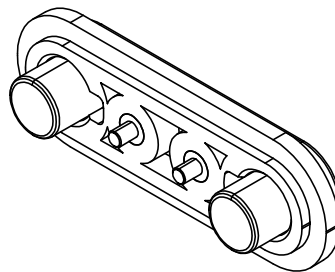
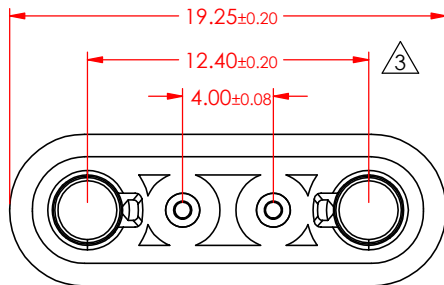
RECOMMENDED SOLDERING PROCESS ARE SELECTIVE SOLDERING
OR MANUAL SOLDERING. OTHER FORMS OF SOLDERING SUCH AS
WAVE SOLDER OR REFLOW SOLDER ARE NOT RECOMMENDED AND
CAN POTENTIALLY CAUSE DEMAGNETIZATION OF MAGNET IN THE
CONNECTOR



RoHS
COMPLIANT

THESE DRAWINGS AND SPECIFICATIONS ARE
THE PROPERTY OF EDAC. AND SHALL NOT BE
REPRODUCED, OR COPIED OR USED AS THE
BASIS FOR THE MANUFACTURE OR SALE OF
APPARATUS WITHOUT WRITTEN PERMISSION.

DRAWN BY	J.L	MAGNETIC SPRING LOADED CONNECTOR, 5 POS, PLUG			
DRAWN DATE	2023-03-13				
CHECKED BY	J.L	PART NUMBER 685K0551450113E			
CHECK DATE	2024-12-03				
TOLERANCES	ALL DIMENSIONS AND TOLERANCES IN MM	MATERIAL	LCP	SIZE	A
.X	±0.15	REVISION		R3	
.XX	±0.10				
.XXX	-	SCALE	3:1	SHEET	1 OF 1



REVISIONS			
REV.	DESCRIPTION	DATE	BY
3	ORIGINAL	3/13/2023	J.L
2	ADD NOTE 6 & 7	8/11/2023	P.M
3	12.40 ±0.20 WAS 12.40 ±0.08, 4.50 ±0.20 WAS 4.50, SPECIFICATIONS UPDATED, CHANGED TEMPLATE	1/17/2025	J.S.M

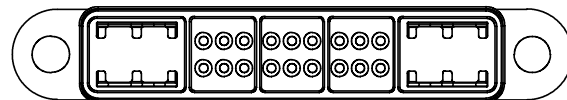
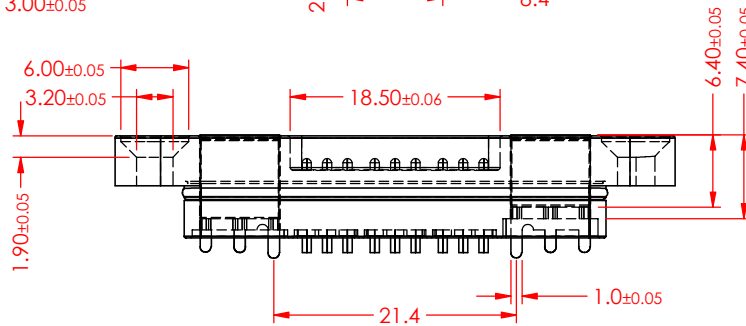
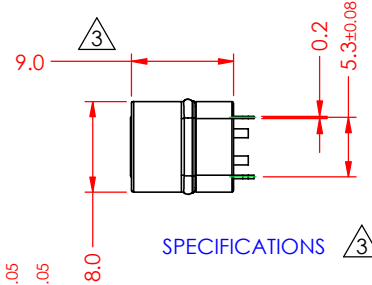
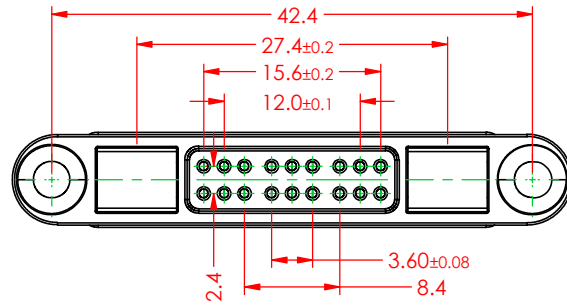
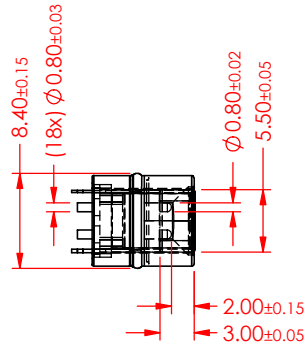
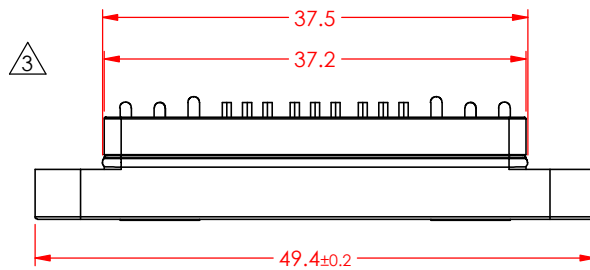
SPECIFICATIONS

CONTACT MATERIAL:	BRASS
CONTACT PLATING:	GOLD FLASH PLATING ALL OVER 50 - 120μ" NICKEL UNDERPLATING
HOUSING MATERIAL:	PA9T
HOUSING COLOR:	WHITE
MAGNET MATERIAL:	N52
VOLTAGE RATING (PER CONTACT):	5V
CURRENT RATING (PER CONTACT):	2A MAX.
INSULATION RESISTANCE:	100MΩ MIN.
WITHSTANDING VOLTAGE:	100V AT 60Hz
OPERATING TEMPERATURE:	-30 °C ~ +85 °C
SOLDERING TEMPERATURE:	260 °C
PIN STRENGTH:	9.8N MIN.
PIN PULLING OFF FORCE:	1.9N MIN.
MATING LIFE CYCLE:	10,000 CYCLES

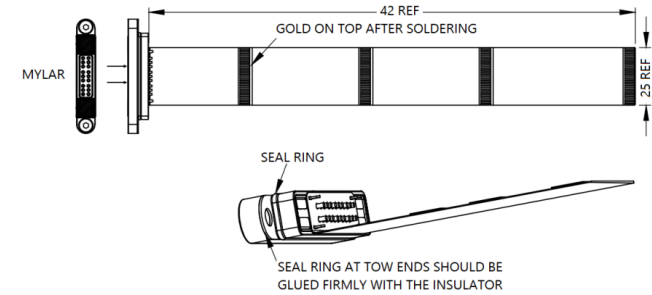
MATES WITH: 685L022221110E

RECOMMENDED SOLDERING PROCESS ARE SELECTIVE SOLDERING OR MANUAL SOLDERING. OTHER FORMS OF SOLDERING SUCH AS WAVE SOLDER OR REFLOW SOLDER ARE NOT RECOMMENDED AND CAN POTENTIALLY CAUSE DEMAGNETIZATION OF MAGNET IN THE CONNECTOR.

		DRAWN BY	J.L	MAGNETIC SPRING LOADED CONNECTOR, 2 POS, RECEPTACLE			
		DRAWN DATE	3/13/2023				
		CHECKED BY	J.L				
		CHECK DATE	1/17/2025	PART NUMBER	686L0222210010E		
RoHS COMPLIANT	THESE DRAWINGS AND SPECIFICATIONS ARE THE PROPERTY OF EDAC, AND SHALL NOT BE REPRODUCED, OR COPIED OR USED AS THE BASIS FOR THE MANUFACTURE OR SALE OF APPARATUS WITHOUT WRITTEN PERMISSION.	TOLERANCES	ALL DIMENSIONS AND TOLERANCES IN MM	MATERIAL	PA9T	SIZE	A
		.X ±0.15				REVISION	
		.XX ±0.10				R3	
		.XXX -		SCALE	3:1	SHEET	1 OF 1



REVISIONS			
REV.	DESCRIPTION	DATE	BY
1	ORIGINAL	4/25/2023	J.L
2	ADD NOTE 8 & 9	8/12/2023	P.M
3	INSULATOR LENGTH AND HEIGHT UPDATED, SPECIFICATIONS UPDATED, CHANGED TEMPLATE	1/16/2025	J.S.M



SPECIFICATIONS 3

CONTACT MATERIAL:	BRASS
CONTACT PLATING:	5µ" GOLD PLATING
HOUSING MATERIAL:	PA46
HOUSING COLOR:	BLACK
MAGNET MATERIAL:	N52
VOLTAGE RATING (PER CONTACT):	12V
CURRENT RATING (PER CONTACT):	2A
INSULATION RESISTANCE:	100MΩ MIN.
WITHSTANDING VOLTAGE:	100V AT 60HZ
OPERATING TEMPERATURE:	-30 °C TO +85 °C
WORKING STROKE:	0.8MM
STROKE FORCE (PER CONTACT):	60 GF MAX.
MATING LIFE CYCLE:	10000 CYCLES

MATES WITH: 686A1821F20111E

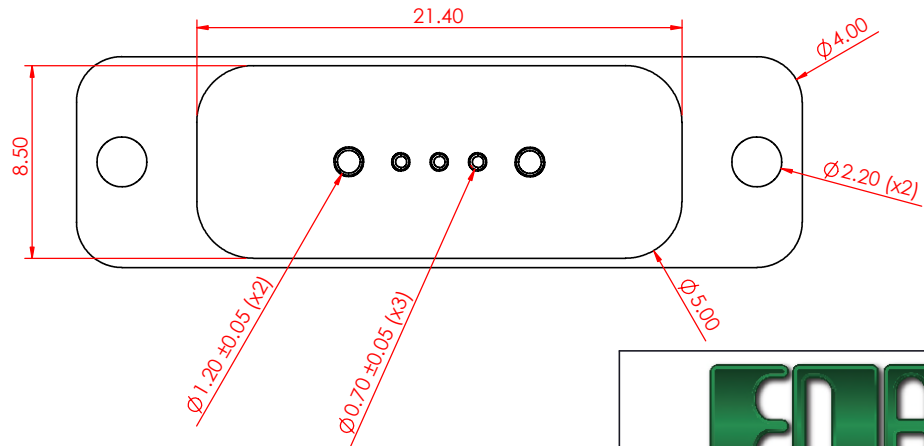
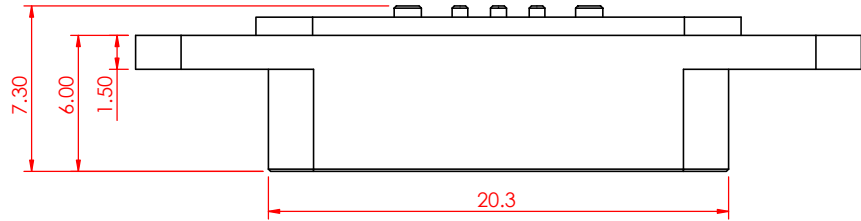
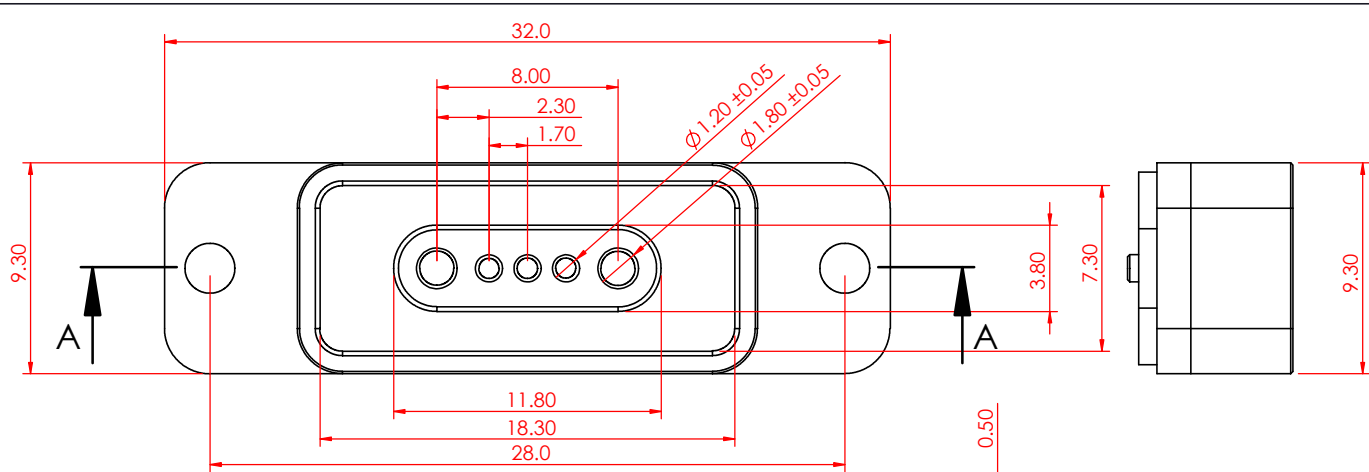
RECOMMENDED SOLDERING PROCESS ARE SELECTIVE SOLDERING OR MANUAL SOLDERING. OTHER FORMS OF SOLDERING SUCH AS WAVE SOLDER OR REFLOW SOLDER ARE NOT RECOMMENDED AND CAN POTENTIALLY CAUSE DEMAGNETIZATION OF MAGNET IN THE CONNECTOR.



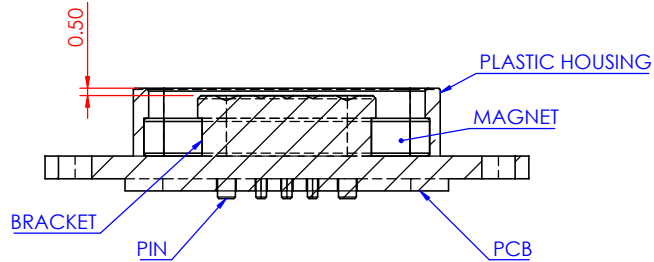
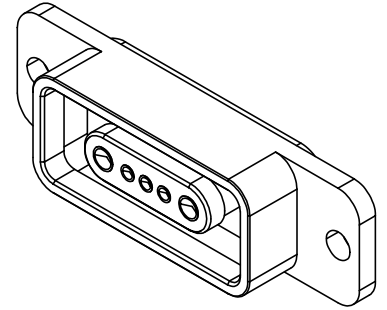
RoHS
COMPLIANT

THESE DRAWINGS AND SPECIFICATIONS ARE THE PROPERTY OF EDAC, AND SHALL NOT BE REPRODUCED, OR COPIED OR USED AS THE BASIS FOR THE MANUFACTURE OR SALE OF APPARATUS WITHOUT WRITTEN PERMISSION.

DRAWN BY	J.L	MAGNETIC SPRING LOADED CONNECTOR, 18 POS, PLUG			
DRAWN DATE	4/25/2023				
CHECKED BY	J.L.	PART NUMBER 685A1821220113Q			
CHECK DATE	01/22/2025				
TOLERANCES	ALL DIMENSIONS AND TOLERANCES IN MM	MATERIAL	PA46	SIZE	A
.X	±0.15			REVISION	
.XX	±0.10			R3	
.XXX	-	SCALE	1.5:1	SHEET	1 OF 1



REVISIONS			
REV.	DESCRIPTION	DATE	BY
1	ORIGINAL	2023-05-05	J.L
2	ADD NOTE 4 & 5	2023-08-13	P.M.
3	6.00 WAS 6.80, 20.3 WAS 18.6, ADDED SECTION VIEW, CHANGED TEMPLATE	2024-11-26	J.S.M



SECTION A-A

SPECIFICATIONS

CONTACT MATERIAL:
CONTACT PLATING:

HOUSING MATERIAL:
HOUSING COLOR:
MAGNET MATERIAL:
VOLTAGE RATING (PER CONTACT):
CURRENT RATING (PER CONTACT):
INSULATION RESISTANCE:
CONTACT RESISTANCE:
OPERATING TEMPERATURE:

MATES WITH:

SPECIFICATIONS

BRASS
GOLD FLASH PLATING ALL OVER
NICKEL UNDERPLATING
LCP
BLACK
N52
24V
5A
100MΩ MIN.
25mΩ MAX.
-30°C ~ +85°C

685K0551450113E & 687K0551050113B

RECOMMENDED SOLDERING PROCESS ARE SELECTIVE SOLDERING OR MANUAL SOLDERING. OTHER FORMS OF SOLDERING SUCH AS WAVE SOLDER OR REFLOW SOLDER ARE NOT RECOMMENDED AND CAN POTENTIALLY CAUSE DEMAGNETIZATION OF MAGNET IN THE CONNECTOR.

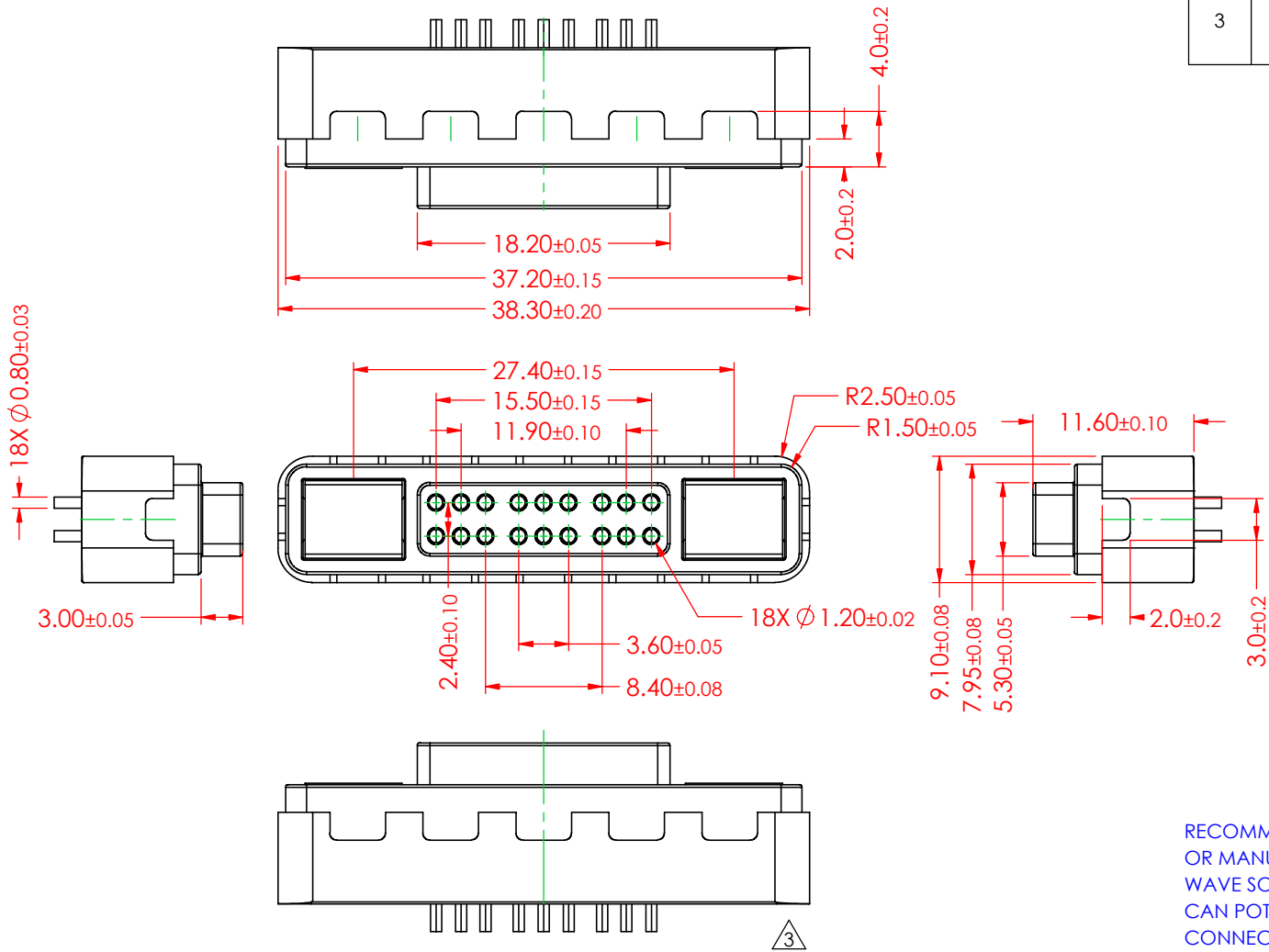


RoHS
COMPLIANT

THESE DRAWINGS AND SPECIFICATIONS ARE THE PROPERTY OF EDAC, AND SHALL NOT BE REPRODUCED, OR COPIED OR USED AS THE BASIS FOR THE MANUFACTURE OR SALE OF APPARATUS WITHOUT WRITTEN PERMISSION.

DRAWN BY	J.L	MAGNETIC SPRING LOADED CONNECTOR, 5 POS, RECEPTACLE			
DRAWN DATE	2023-05-05				
CHECKED BY	J.L	PART NUMBER 686K0551210113E			
CHECK DATE	2024-12-03				
TOLERANCES	ALL DIMENSIONS AND TOLERANCES IN MM	MATERIAL	LCP	SIZE	A
.X	±0.15			REVISION	
.XX	±0.10			R3	
.XXX	-	SCALE	1:1	SHEET	1 OF 1


REVISIONS			
REV.	DESCRIPTION	DATE	BY
1	ORIGINAL	2023-04-27	J.L
2	ADD NOTE 4 & 5	2023-08-12	P.M
3	REMOVE CONTACT TAILS, UPDATED CONTACT SPACING, HOUSING HEIGHT, SPECIFICATIONS AND LENGTH, CHANGED TEMPLATE	2024-12-04	J.L

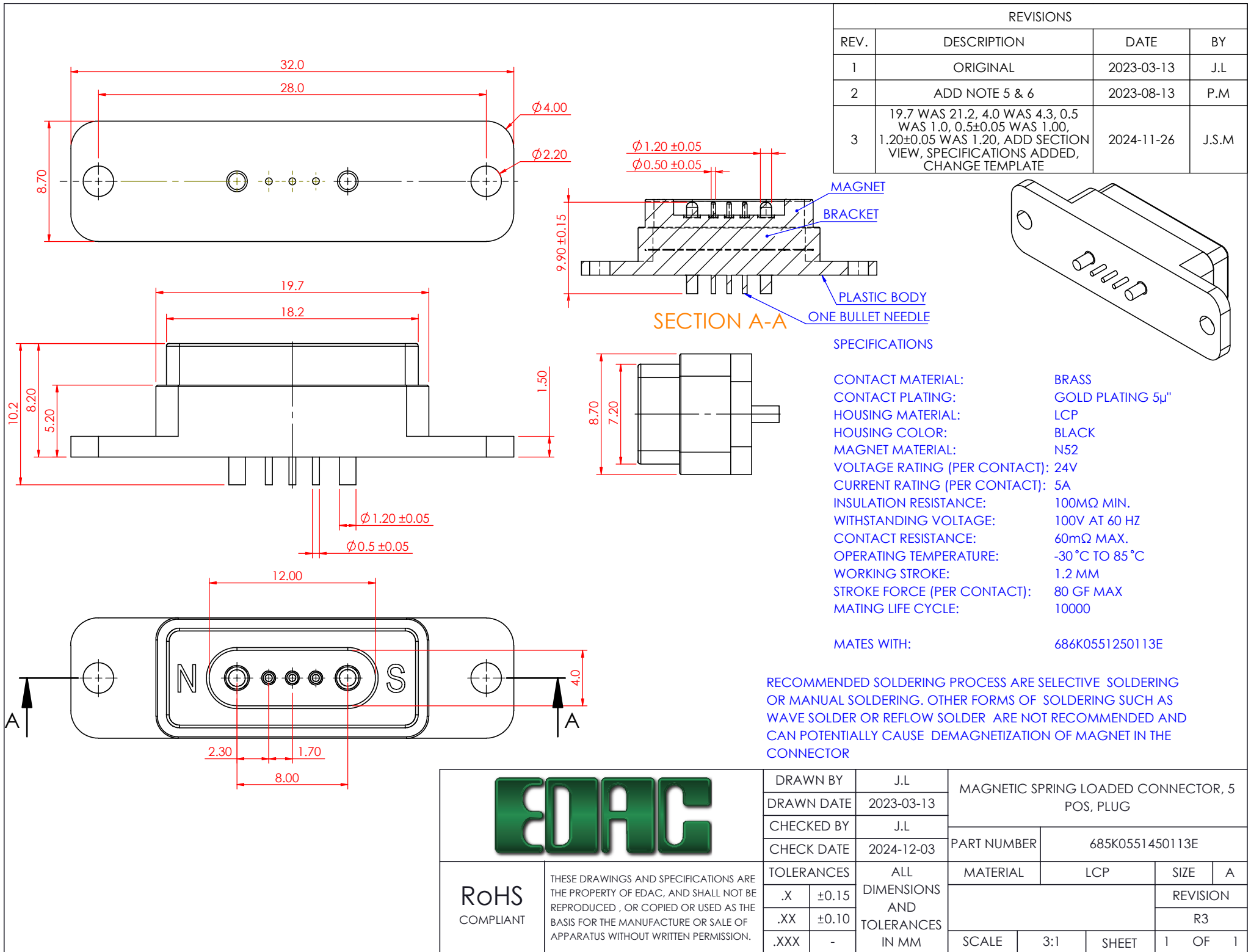


SPECIFICATIONS

CONTACT MATERIAL:	BRASS
CONTACT PLATING:	GOLD PLATING 3μ"
HOUSING MATERIAL:	PA46
HOUSING COLOR:	BLACK
MAGNET MATERIAL:	N52
VOLTAGE RATING (PER CONTACT):	12V
CURRENT RATING (PER CONTACT):	2A MAX.
INSULATION RESISTANCE:	100MΩ MIN.
WITHSTANDING VOLTAGE:	100V AT 60 HZ
OPERATING TEMPERATURE:	-30 °C TO 85 °C
WORKING STROKE:	N/A
STROKE FORCE (PER CONTACT):	N/A
MATING LIFE CYCLE:	10000
MATES WITH:	685A1821220113Q

RECOMMENDED SOLDERING PROCESS ARE SELECTIVE SOLDERING OR MANUAL SOLDERING. OTHER FORMS OF SOLDERING SUCH AS WAVE SOLDER OR REFLOW SOLDER ARE NOT RECOMMENDED AND CAN POTENTIALLY CAUSE DEMAGNETIZATION OF MAGNET IN THE CONNECTOR


		DRAWN BY	J.L	MAGNETIC SPRING LOADED CONNECTOR, 18 POS, RECEPTACLE			
		DRAWN DATE	2023-04-27				
		CHECKED BY	J.L				
		CHECK DATE	2024-12-04	PART NUMBER	686A1821F20111E		
RoHS COMPLIANT	THESE DRAWINGS AND SPECIFICATIONS ARE THE PROPERTY OF EDAC, AND SHALL NOT BE REPRODUCED , OR COPIED OR USED AS THE BASIS FOR THE MANUFACTURE OR SALE OF APPARATUS WITHOUT WRITTEN PERMISSION.	TOLERANCES	ALL DIMENSIONS AND TOLERANCES IN MM	MATERIAL	PA46	SIZE	A
		.X	±0.15			REVISION	
		.XX	±0.10			R3	
		.XXX	-	SCALE	2:1	SHEET	1 OF 1



REVISIONS			
REV.	DESCRIPTION	DATE	BY
1	ORIGINAL	2023-03-13	J.L
2	ADD NOTE 5 & 6	2023-08-13	P.M
3	19.7 WAS 21.2, 4.0 WAS 4.3, 0.5 WAS 1.0, 0.5±0.05 WAS 1.00, 1.20±0.05 WAS 1.20, ADD SECTION VIEW, SPECIFICATIONS ADDED, CHANGE TEMPLATE	2024-11-26	J.S.M

SPECIFICATIONS	
CONTACT MATERIAL:	BRASS
CONTACT PLATING:	GOLD PLATING 5μ"
HOUSING MATERIAL:	LCP
HOUSING COLOR:	BLACK
MAGNET MATERIAL:	N52
VOLTAGE RATING (PER CONTACT):	24V
CURRENT RATING (PER CONTACT):	5A
INSULATION RESISTANCE:	100MΩ MIN.
WITHSTANDING VOLTAGE:	100V AT 60 HZ
CONTACT RESISTANCE:	60mΩ MAX.
OPERATING TEMPERATURE:	-30°C TO 85°C
WORKING STROKE:	1.2 MM
STROKE FORCE (PER CONTACT):	80 GF MAX
MATING LIFE CYCLE:	10000
MATES WITH:	686K0551250113E

RECOMMENDED SOLDERING PROCESS ARE SELECTIVE SOLDERING OR MANUAL SOLDERING. OTHER FORMS OF SOLDERING SUCH AS WAVE SOLDER OR REFLOW SOLDER ARE NOT RECOMMENDED AND CAN POTENTIALLY CAUSE DEMAGNETIZATION OF MAGNET IN THE CONNECTOR

		DRAWN BY		J.L		MAGNETIC SPRING LOADED CONNECTOR, 5 POS, PLUG					
		DRAWN DATE		2023-03-13							
		CHECKED BY		J.L							
		CHECK DATE		2024-12-03		PART NUMBER		685K0551450113E			
RoHS COMPLIANT	THESE DRAWINGS AND SPECIFICATIONS ARE THE PROPERTY OF EDAC, AND SHALL NOT BE REPRODUCED , OR COPIED OR USED AS THE BASIS FOR THE MANUFACTURE OR SALE OF APPARATUS WITHOUT WRITTEN PERMISSION.	TOLERANCES		ALL DIMENSIONS AND TOLERANCES IN MM		MATERIAL		LCP		SIZE	A
		.X	±0.15			REVISION					
		.XX	±0.10							R3	
		.XXX	-			SCALE	3:1	SHEET	1	OF	1