



161 Alden Road, Units 7 & 8, Markham, Ontario Canada L3R 3W7

Tel: +1 416 754-3322

Fax: +1 416-754-3299

Email: support@edac.net

http://www.edac.net

ENGINEERING CHANGE NOTICE

Originator:	Mit Patel	Date:	Document Number
Phone No.	416-754-3322	February 6, 2025	20250206-00
Email Address:	mpatel@edac.net	Revision Number	SHEET
Department	Quality	1	1 of 16

CHANGE TYPE:

- ☐ CLASS I Customer notification and approval required prior to implementation
☒ CLASS II Customer notification only, no approval required
☐ CLASS III No customer notification required

REASON OF CHANGE

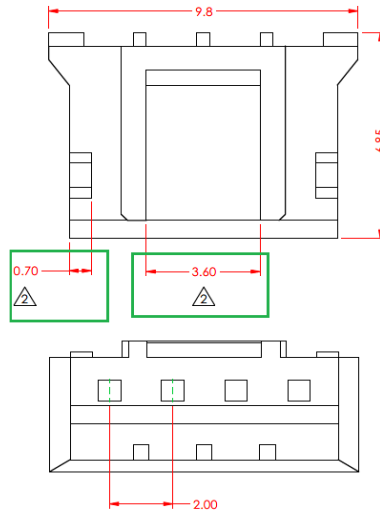
Dimension and specification added

DESCRIPTION OF CHANGE:

The following updates apply to the 140 Socket series, with no impact on form, fit, or function:

- 1) Additional dimensional values and housing color have been defined to standardize manufacturing and inspection processes.
- 2) Dimensional changes have been implemented according to the number of positions. Please see all update drawings below.
- 3) These updates affect the part numbers listed below.

Part Number
140-502-210-011
140-503-210-011
140-504-210-011
140-505-210-011
140-506-210-011
140-507-210-011
140-508-210-011
140-509-210-011
140-510-210-011
140-511-210-011
140-512-210-011
140-513-210-011
140-514-210-011
140-515-210-011
140-516-210-011



SPECIFICATION:	
HOUSING:	PA66, UL94V-0, NATURAL
CURRENT RATING:	2A AC/DC
VOLTAGE RATING:	100V AC/DC
TEMPERATURE RATING:	-25°C ~ 85°C
CONTACT RESISTANCE:	10mΩ MAX
INSULATOR RESISTANCE:	1000MΩ MIN
WITHSTANDING VOLTAGE:	800V AC / 60s

PARTIES AFFECTED

- ☒ Customer
☒ Distributors
☐ Suppliers

- ☐ NORCOMP
☐ MH
☒ ETW

- ☒ ECA
☒ EDG
☒ EDAC UK

KEY TARGET DUE DATES IF CHANGE IS APPROVED TO PROCEED (check if applicable and show target dates as known)

- ☐ Submit Quote
☐ Prod. Trial Run
☐ Run at Rate

- ☐ PPAP from Supplier
☐ MRD of Production Parts
☐ UL / CSA / RoHS / REACH

ACKNOWLEDGEMENT FOR ECN INITIATION: (OPTIONALS)

<input type="checkbox"/> Tooling Rep		<input type="checkbox"/> Marketing Rep	Marco Lamanna
<input type="checkbox"/> Mfg Eng Rep		<input type="checkbox"/> Facilities Rep	
<input type="checkbox"/> Production Rep		<input type="checkbox"/> Sales Rep.	Esther Marothy
<input type="checkbox"/> Materials Rep		<input type="checkbox"/> Product Eng. Rep.	
<input type="checkbox"/> Quality Rep	Mit Patel	<input type="checkbox"/> Purchasing Rep	

STATUS

APPROVED

CCS CHANGE REQUEST #

APPROVALS FOR ECN INITIATION (REQUIRED)

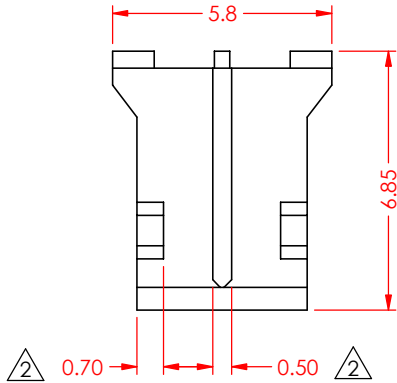
<input checked="" type="checkbox"/> General Manager	Bob Sakitkovski	<input checked="" type="checkbox"/> Quality Engineer	Mit Patel
<input checked="" type="checkbox"/> Engineering Manager	Ronnie Sta Monica	<input checked="" type="checkbox"/> Engineer	Jacky Lai
<input checked="" type="checkbox"/> Business Development Manager	Kobie Samuels		

REJECTED

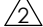
Change REJECTED by:

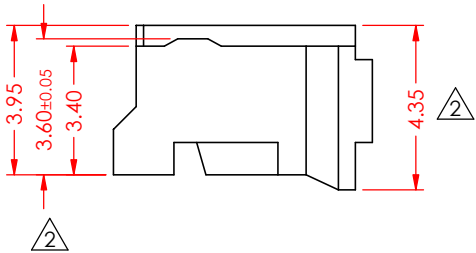
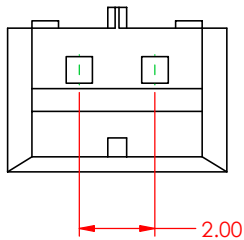
Rejected Date:


REVISIONS			
REV.	DESCRIPTION	DATE	BY
1	ORIGINAL	04/03/2020	J.L.
2	ADD 0.70, 27.60, 3.95, 3.60±0.05, 4.35, ADD HOUSING COLOR	02/07/2025	J.S.M.



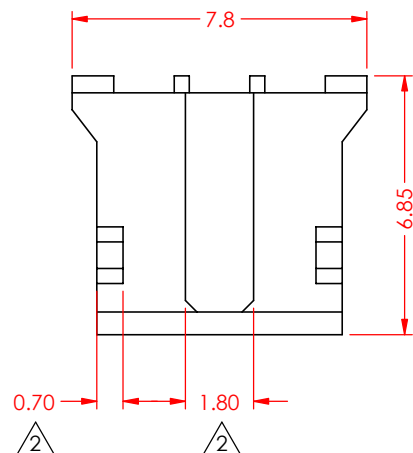
SPECIFICATION:

HOUSING:	PA66, UL94V-0, NATURAL 
CURRENT RATING:	2A AC/DC
VOLTAGE RATING:	100V AC/DC
TEMPERATURE RATING:	-25°C ~ 85°C
CONTACT RESISTANCE:	10mΩ MAX
INSULATOR RESISTANCE:	1000MΩ MIN
WITHSTANDING VOLTAGE:	800V AC / 60s




		DRAWN BY		C.B.	140 SERIES FEMALE CRIMP CONTACT HOUSING						
		DRAWN DATE		04/03/2020							
		CHECKED BY		J.L							
		CHECK DATE		02/07/2025	PART NUMBER		140-502-210-011				
RoHS COMPLIANT	THESE DRAWINGS AND SPECIFICATIONS ARE THE PROPERTY OF EDAC, AND SHALL NOT BE REPRODUCED , OR COPIED OR USED AS THE BASIS FOR THE MANUFACTURE OR SALE OF APPARATUS WITHOUT WRITTEN PERMISSION.	TOLERANCES		ALL DIMENSIONS AND TOLERANCES IN MM		MATERIAL		PA66		SIZE	A
		.X	±0.30			REVISION					
		.XX	±0.20								
		.XXX				SCALE		5:1	SHEET	1	OF

REVISIONS			
REV.	DESCRIPTION	DATE	BY
1	ORIGINAL	04/03/2020	J.L.
2	ADD 0.70, 1.80, 3.95, 3.60±0.05, 4.35, ADD HOUSING COLOR	01/21/2025	J.S.M.



SPECIFICATION:

HOUSING: PA66, UL94V-0, NATURAL 

CURRENT RATING: 2A AC/DC

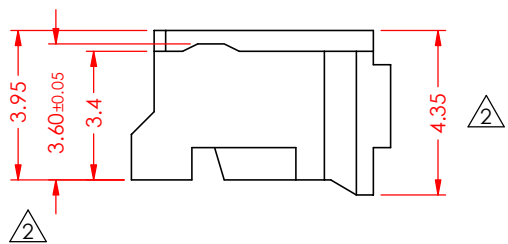
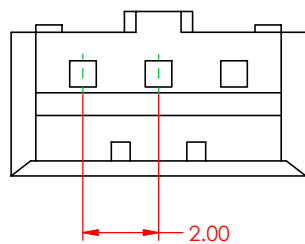
VOLTAGE RATING: 100V AC/DC


TEMPERATURE RATING: -25°C ~ 85°C

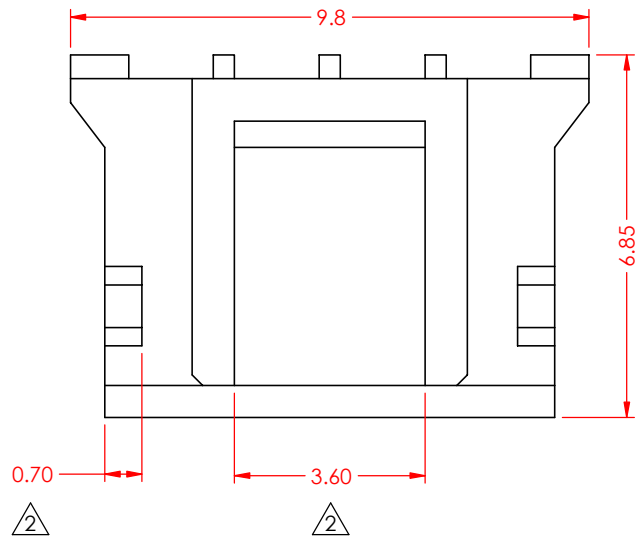
CONTACT RESISTANCE: 10mΩ MAX

INSULATOR RESISTANCE: 1000MΩ MIN

WITHSTANDING VOLTAGE: 800V AC / 60s




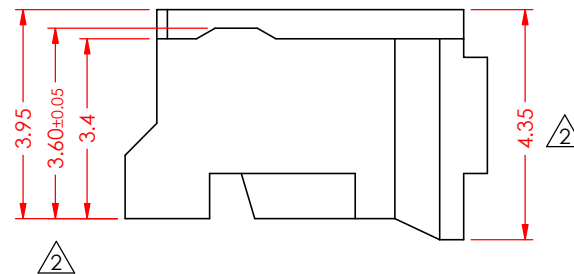
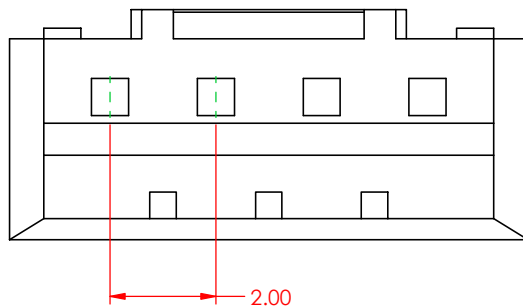
		DRAWN BY		C.B.	140 SERIES FEMALE CRIMP CONTACT HOUSING					
		DRAWN DATE		04/03/2020						
		CHECKED BY		R.S.M.						
		CHECK DATE		01/21/2025	PART NUMBER		140-503-210-011			
RoHS COMPLIANT	THESE DRAWINGS AND SPECIFICATIONS ARE THE PROPERTY OF EDAC, AND SHALL NOT BE REPRODUCED , OR COPIED OR USED AS THE BASIS FOR THE MANUFACTURE OR SALE OF APPARATUS WITHOUT WRITTEN PERMISSION.	TOLERANCES		ALL DIMENSIONS AND TOLERANCES IN MM	MATERIAL		PA66		SIZE	A
		.X	±0.30						REVISION	
		.XX	±0.20						R2	
		.XXX			SCALE	5:1	SHEET	1	OF	1




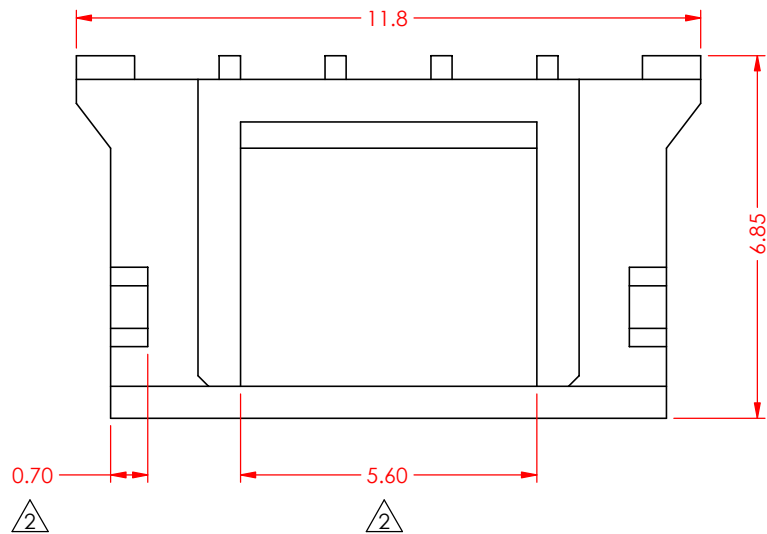
REVISIONS			
REV.	DESCRIPTION	DATE	BY
1	ORIGINAL	04/03/2020	J.L.
2	ADD 0.70, 3.60, 3.95, 3.60±0.05, 4.35, ADD HOUSING COLOR	02/07/2025	J.S.M.

SPECIFICATION:

HOUSING:	PA66, UL94V-0, NATURAL 
CURRENT RATING:	2A AC/DC
VOLTAGE RATING:	100V AC/DC
TEMPERATURE RATING:	-25°C ~ 85°C
CONTACT RESISTANCE:	10mΩ MAX
INSULATOR RESISTANCE:	1000MΩ MIN
WITHSTANDING VOLTAGE:	800V AC / 60s




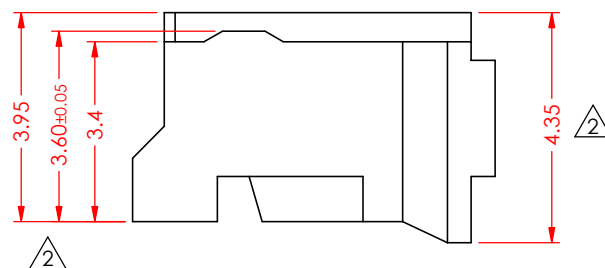
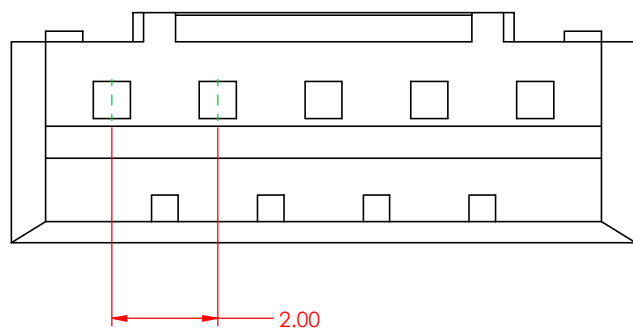
		DRAWN BY		C.B.		140 SERIES FEMALE CRIMP CONTACT HOUSING					
		DRAWN DATE		04/03/2020							
		CHECKED BY		J.L							
				CHECK DATE		02/07/2025		PART NUMBER		140-504-210-011	
RoHS COMPLIANT	THESE DRAWINGS AND SPECIFICATIONS ARE THE PROPERTY OF EDAC, AND SHALL NOT BE REPRODUCED , OR COPIED OR USED AS THE BASIS FOR THE MANUFACTURE OR SALE OF APPARATUS WITHOUT WRITTEN PERMISSION.	TOLERANCES		ALL DIMENSIONS AND TOLERANCES IN MM		MATERIAL		PA66		SIZE	A
		.X	±0.30					REVISION			
		.XX	±0.20							R2	
		.XXX				SCALE	5:1	SHEET	1		




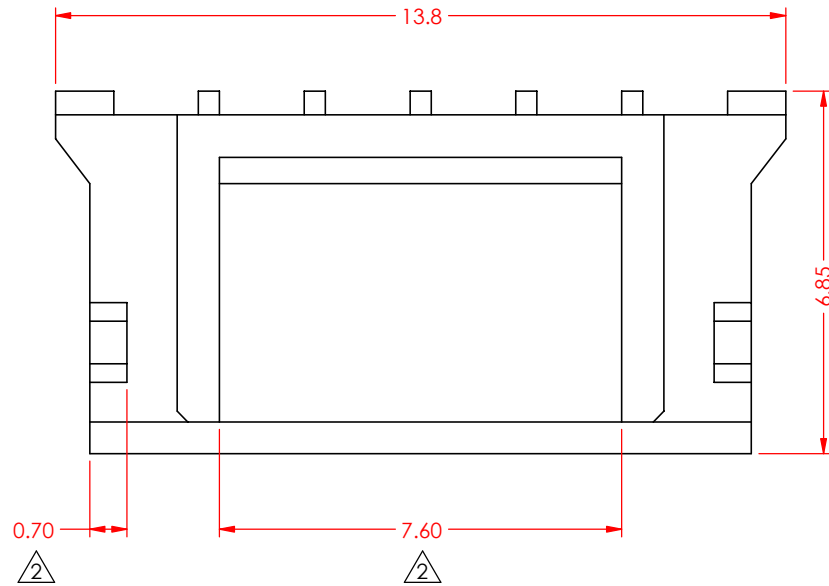
REVISIONS			
REV.	DESCRIPTION	DATE	BY
1	ORIGINAL	04/03/2020	J.L.
2	ADD 0.70, 5.60, 3.95, 3.60±0.05, 4.35, ADD HOUSING COLOR	02/07/2025	J.S.M.

SPECIFICATION:

HOUSING:	PA66, UL94V-0, NATURAL 
CURRENT RATING:	2A AC/DC
VOLTAGE RATING:	100V AC/DC
TEMPERATURE RATING:	-25°C ~ 85°C
CONTACT RESISTANCE:	10mΩ MAX
INSULATOR RESISTANCE:	1000MΩ MIN
WITHSTANDING VOLTAGE:	800V AC / 60s




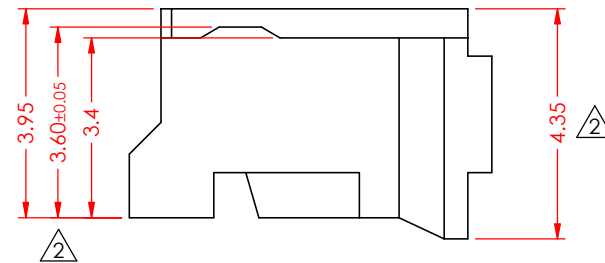
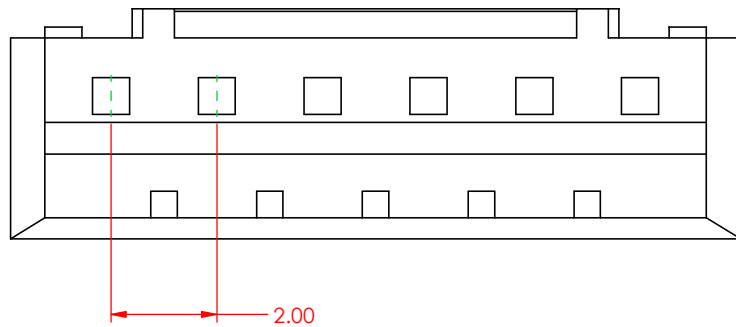
		DRAWN BY		C.B.		140 SERIES FEMALE CRIMP CONTACT HOUSING					
		DRAWN DATE		04/03/2020							
		CHECKED BY		J.L							
				CHECK DATE		02/07/2025		PART NUMBER		140-505-210-011	
RoHS COMPLIANT	THESE DRAWINGS AND SPECIFICATIONS ARE THE PROPERTY OF EDAC, AND SHALL NOT BE REPRODUCED , OR COPIED OR USED AS THE BASIS FOR THE MANUFACTURE OR SALE OF APPARATUS WITHOUT WRITTEN PERMISSION.	TOLERANCES		ALL DIMENSIONS AND TOLERANCES IN MM		MATERIAL		PA66		SIZE	A
		.X	±0.30			REVISION					
		.XX	±0.20								
		.XXX				R2					
				SCALE		5:1	SHEET	1	OF	1	




REVISIONS			
REV.	DESCRIPTION	DATE	BY
1	ORIGINAL	04/03/2020	J.L.
2	ADD 0.70, 7.60, 3.95, 3.60±0.05, 4.35, ADD HOUSING COLOR	02/07/2025	J.S.M.


SPECIFICATION:

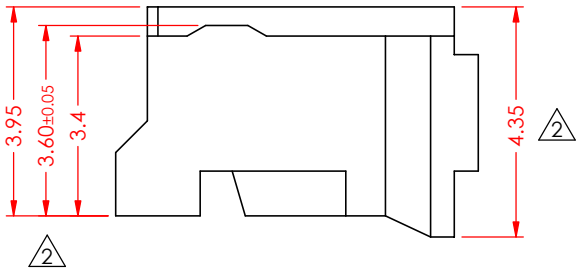
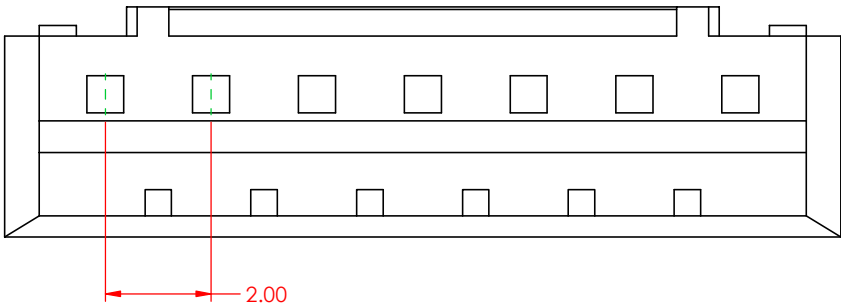
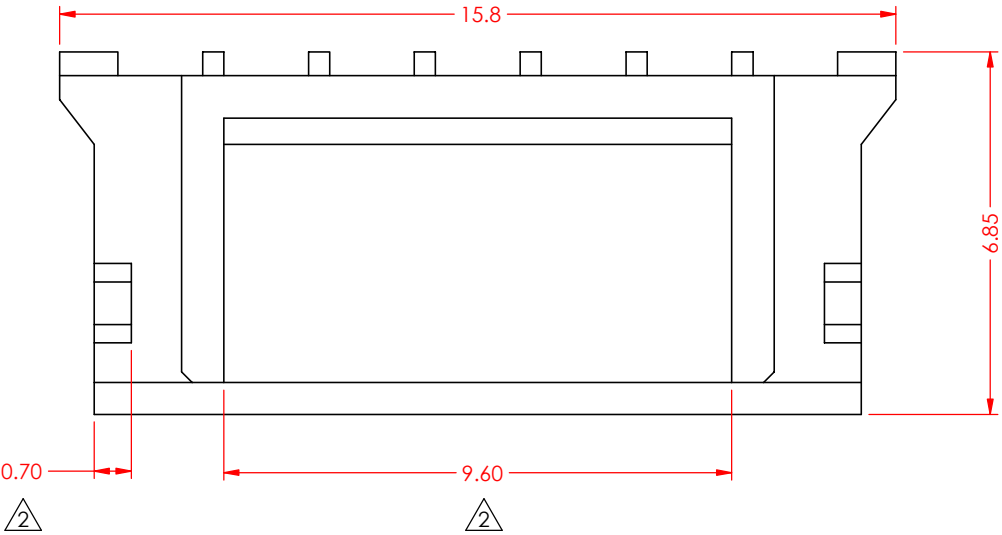
HOUSING:	PA66, UL94V-0, NATURAL 
CURRENT RATING:	2A AC/DC
VOLTAGE RATING:	100V AC/DC
TEMPERATURE RATING:	-25°C ~ 85°C
CONTACT RESISTANCE:	10mΩ MAX
INSULATOR RESISTANCE:	1000MΩ MIN
WITHSTANDING VOLTAGE:	800V AC / 60s




		DRAWN BY		C.B.		140 SERIES FEMALE CRIMP CONTACT HOUSING					
		DRAWN DATE		04/03/2020							
		CHECKED BY		J.L		PART NUMBER		140-506-210-011			
		CHECK DATE		02/07/2025							
RoHS COMPLIANT	THESE DRAWINGS AND SPECIFICATIONS ARE THE PROPERTY OF EDAC, AND SHALL NOT BE REPRODUCED , OR COPIED OR USED AS THE BASIS FOR THE MANUFACTURE OR SALE OF APPARATUS WITHOUT WRITTEN PERMISSION.	TOLERANCES		ALL DIMENSIONS AND TOLERANCES IN MM		MATERIAL		PA66		SIZE	A
		.X	±0.30							REVISION	
		.XX	±0.20							R2	
		.XXX				SCALE	5:1	SHEET	1	OF	1

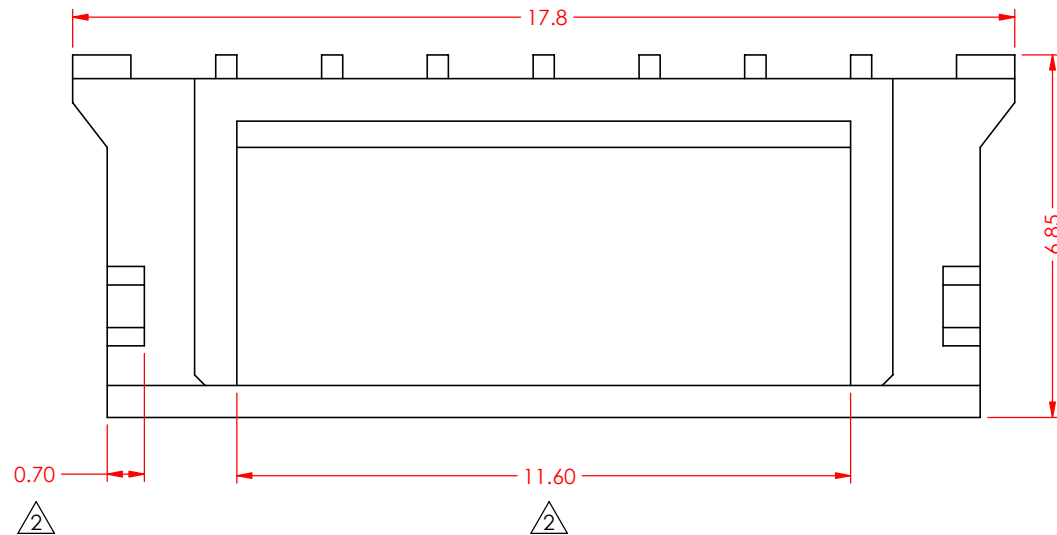
REVISIONS			
REV.	DESCRIPTION	DATE	BY
1	ORIGINAL	04/03/2020	J.L.
2	ADD 0.70, 9.60, 3.95, 3.60±0.05, 4.35, ADD HOUSING COLOR	02/07/2025	J.S.M.

SPECIFICATION:
HOUSING: PA66, UL94V-0, NATURAL 
CURRENT RATING: 2A AC/DC
VOLTAGE RATING: 100V AC/DC
TEMPERATURE RATING: -25°C ~ 85°C
CONTACT RESISTANCE: 10mΩ MAX
INSULATOR RESISTANCE: 1000MΩ MIN
WITHSTANDING VOLTAGE: 800V AC / 60s



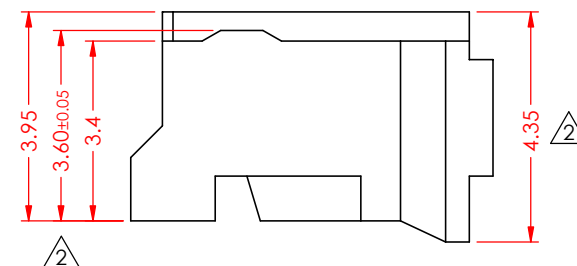
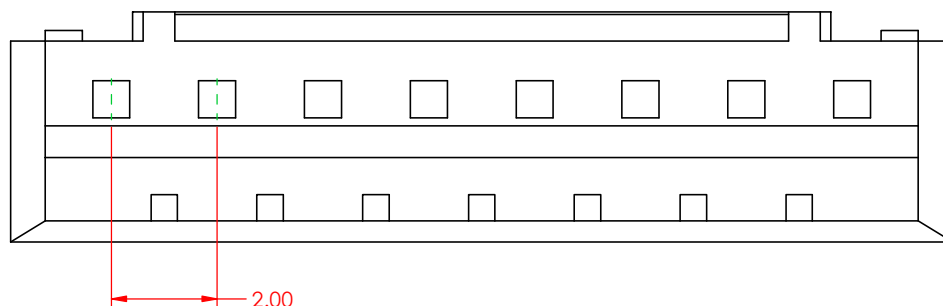
		DRAWN BY		C.B.		140 SERIES FEMALE CRIMP CONTACT HOUSING					
		DRAWN DATE		04/03/2020							
		CHECKED BY		J.L							
		CHECK DATE		02/07/2025		PART NUMBER		140-507-210-011			
RoHS COMPLIANT	THESE DRAWINGS AND SPECIFICATIONS ARE THE PROPERTY OF EDAC, AND SHALL NOT BE REPRODUCED , OR COPIED OR USED AS THE BASIS FOR THE MANUFACTURE OR SALE OF APPARATUS WITHOUT WRITTEN PERMISSION.	TOLERANCES		ALL DIMENSIONS AND TOLERANCES IN MM		MATERIAL		PA66		SIZE	A
		.X	±0.30			REVISION					
		.XX	±0.20								
		.XXX				SCALE		5:1	SHEET	1	OF


REVISIONS			
REV.	DESCRIPTION	DATE	BY
1	ORIGINAL	04/03/2020	J.L.
2	ADD 0.70, 11.60, 3.95, 3.60±0.05, 4.35, ADD HOUSING COLOR	02/07/2025	J.S.M.

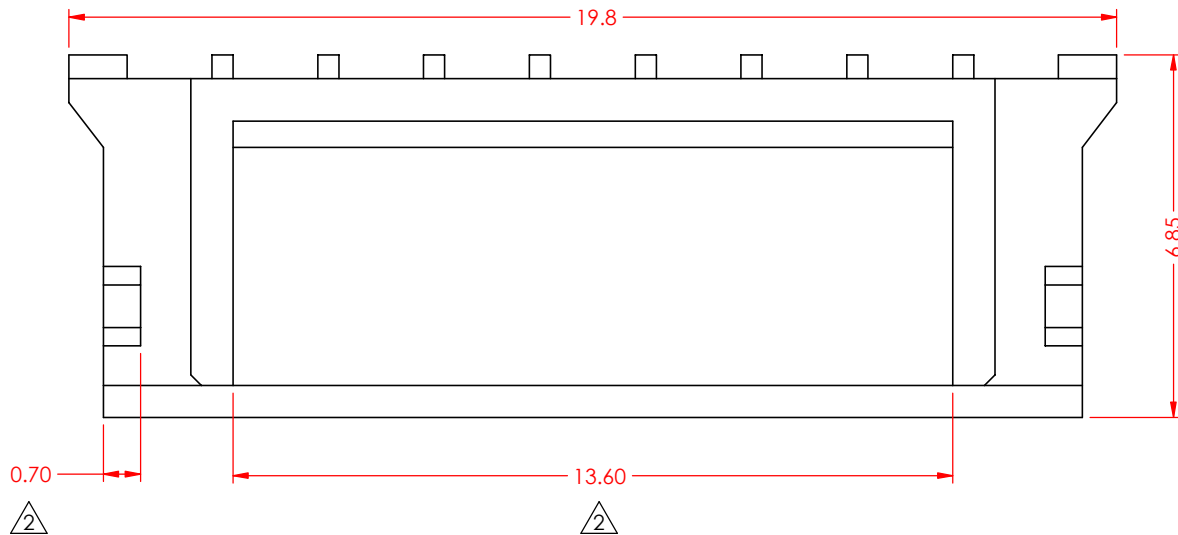


SPECIFICATION:

HOUSING:	PA66, UL94V-0, NATURAL △2
CURRENT RATING:	2A AC/DC
VOLTAGE RATING:	100V AC/DC
TEMPERATURE RATING:	-25°C ~ 85°C
CONTACT RESISTANCE:	10mΩ MAX
INSULATOR RESISTANCE:	1000MΩ MIN
WITHSTANDING VOLTAGE:	800V AC / 60s



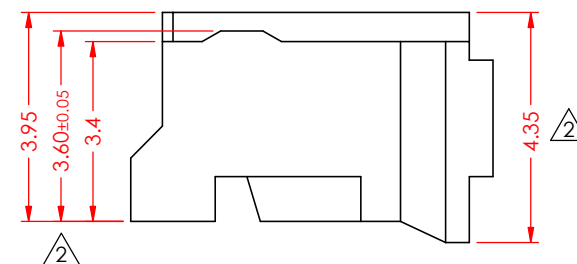
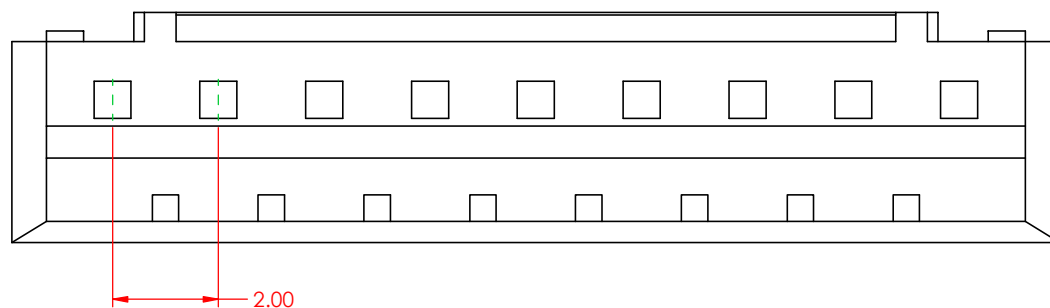
		DRAWN BY		C.B.		140 SERIES FEMALE CRIMP CONTACT HOUSING							
		DRAWN DATE		04/03/2020									
		CHECKED BY		J.L									
				CHECK DATE		02/07/2025		PART NUMBER		140-508-210-011			
RoHS COMPLIANT	THESE DRAWINGS AND SPECIFICATIONS ARE THE PROPERTY OF EDAC, AND SHALL NOT BE REPRODUCED , OR COPIED OR USED AS THE BASIS FOR THE MANUFACTURE OR SALE OF APPARATUS WITHOUT WRITTEN PERMISSION.	TOLERANCES		ALL DIMENSIONS AND TOLERANCES IN MM		MATERIAL		PA66		SIZE		A	
		.X				±0.30		REVISION					
		.XX				±0.20							
		.XXX						SCALE		5:1		SHEET	




REVISIONS			
REV.	DESCRIPTION	DATE	BY
1	ORIGINAL	04/03/2020	J.L.
2	ADD 0.70, 13.60, 3.95, 3.60±0.05, 4.35, ADD HOUSING COLOR	02/07/2025	J.S.M.

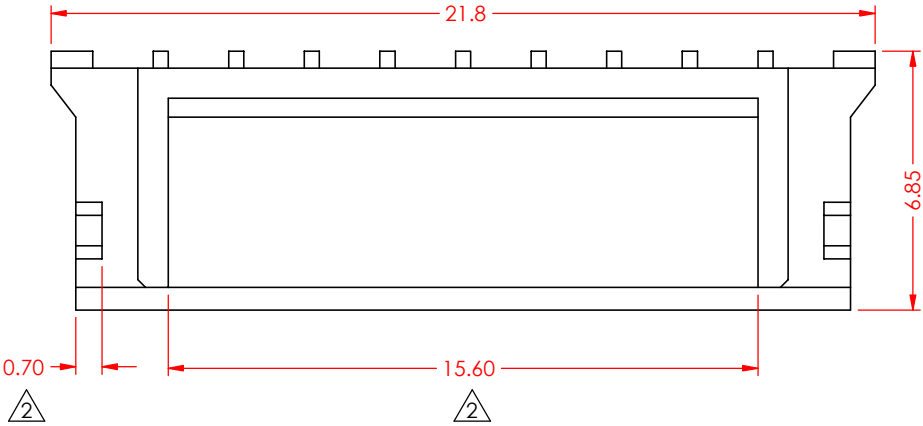
SPECIFICATION:

HOUSING:	PA66, UL94V-0, NATURAL
CURRENT RATING:	2A AC/DC
VOLTAGE RATING:	100V AC/DC
TEMPERATURE RATING:	-25°C ~ 85°C
CONTACT RESISTANCE:	10mΩ MAX
INSULATOR RESISTANCE:	1000MΩ MIN
WITHSTANDING VOLTAGE:	800V AC / 60s




		DRAWN BY		C.B.		140 SERIES FEMALE CRIMP CONTACT HOUSING							
		DRAWN DATE		04/03/2020									
		CHECKED BY		J.L									
				CHECK DATE		02/07/2025		PART NUMBER		140-509-210-011			
RoHS COMPLIANT	THESE DRAWINGS AND SPECIFICATIONS ARE THE PROPERTY OF EDAC, AND SHALL NOT BE REPRODUCED , OR COPIED OR USED AS THE BASIS FOR THE MANUFACTURE OR SALE OF APPARATUS WITHOUT WRITTEN PERMISSION.	TOLERANCES		ALL DIMENSIONS AND TOLERANCES IN MM		MATERIAL		PA66		SIZE		A	
		.X	±0.30			REVISION							
		.XX	±0.20										
		.XXX				SCALE		5:1	SHEET	1	OF	1	

REVISIONS			
REV.	DESCRIPTION	DATE	BY
1	ORIGINAL	04/03/2020	J.L.
2	ADD 0.70, 15.60, 3.95, 3.60±0.05, 4.35, ADD HOUSING COLOR	02/07/2025	J.S.M.



SPECIFICATION:

HOUSING: PA66, UL94V-0, NATURAL 

CURRENT RATING: 2A AC/DC

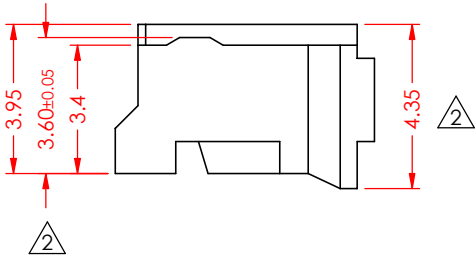
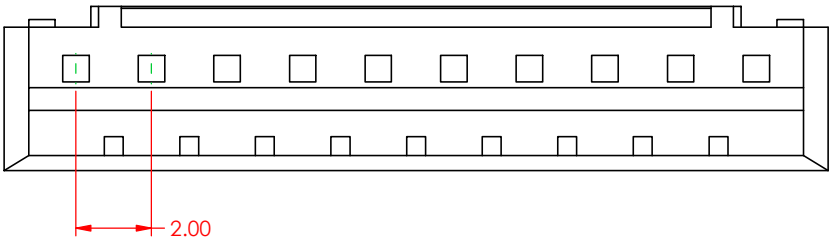
VOLTAGE RATING: 100V AC/DC


TEMPERATURE RATING: -25°C ~ 85°C

CONTACT RESISTANCE: 10mΩ MAX

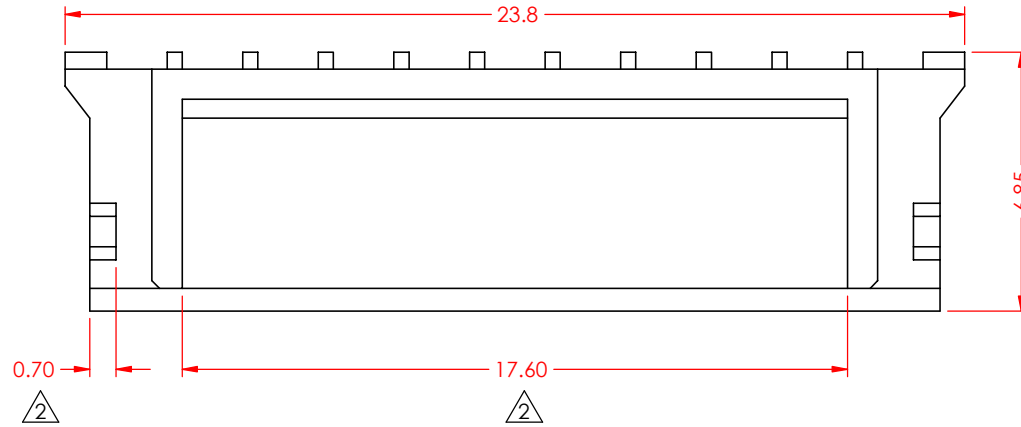
INSULATOR RESISTANCE: 1000MΩ MIN

WITHSTANDING VOLTAGE: 800V AC / 60s



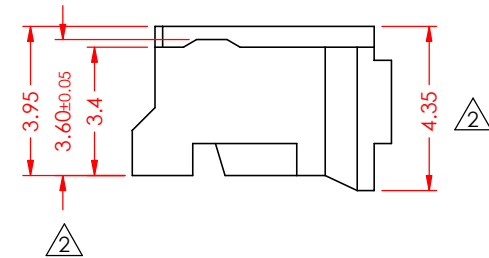
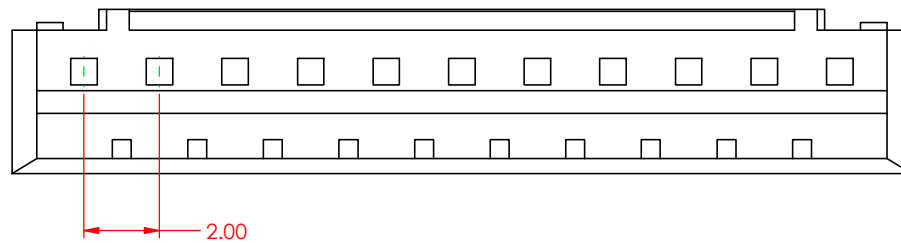
		DRAWN BY		C.B.		140 SERIES FEMALE CRIMP CONTACT HOUSING					
		DRAWN DATE		04/03/2020							
		CHECKED BY		J.L							
		CHECK DATE		02/07/2025		PART NUMBER		140-510-210-011			
RoHS COMPLIANT	THESE DRAWINGS AND SPECIFICATIONS ARE THE PROPERTY OF EDAC, AND SHALL NOT BE REPRODUCED , OR COPIED OR USED AS THE BASIS FOR THE MANUFACTURE OR SALE OF APPARATUS WITHOUT WRITTEN PERMISSION.	TOLERANCES		ALL DIMENSIONS AND TOLERANCES IN MM		MATERIAL		PA66		SIZE	A
		.X	±0.30							REVISION	
		.XX	±0.20							R2	
		.XXX				SCALE	5:1	SHEET	1	OF	1


REVISIONS			
REV.	DESCRIPTION	DATE	BY
1	ORIGINAL	04/03/2020	J.L.
2	ADD 0.70, 17.60, 3.95, 3.60±0.05, 4.35, ADD HOUSING COLOR	02/07/2025	J.S.M.



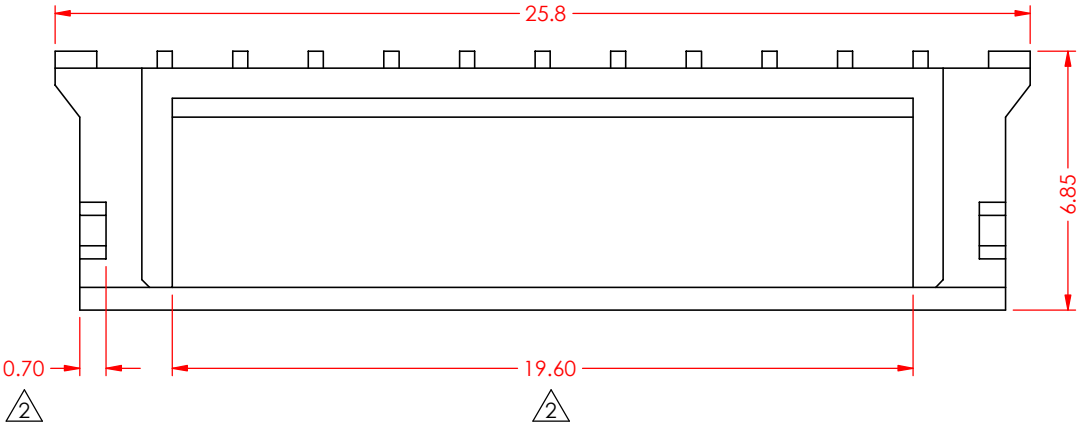
SPECIFICATION:

HOUSING:	PA66, UL94V-0, NATURAL
CURRENT RATING:	2A AC/DC
VOLTAGE RATING:	100V AC/DC
TEMPERATURE RATING:	-25°C ~ 85°C
CONTACT RESISTANCE:	10mΩ MAX
INSULATOR RESISTANCE:	1000MΩ MIN
WITHSTANDING VOLTAGE:	800V AC / 60s



		DRAWN BY	C.B.	140 SERIES FEMALE CRIMP CONTACT HOUSING				
		DRAWN DATE	04/03/2020					
		CHECKED BY	J.L					
		CHECK DATE	02/07/2025	PART NUMBER	140-511-210-011			
RoHS COMPLIANT	THESE DRAWINGS AND SPECIFICATIONS ARE THE PROPERTY OF EDAC, AND SHALL NOT BE REPRODUCED , OR COPIED OR USED AS THE BASIS FOR THE MANUFACTURE OR SALE OF APPARATUS WITHOUT WRITTEN PERMISSION.	TOLERANCES		ALL DIMENSIONS AND TOLERANCES IN MM	MATERIAL	PA66	SIZE	A
		.X	±0.30		REVISION			
		.XX	±0.20					
		.XXX			R2			
					SCALE	5:1	SHEET	1 OF 1

REVISIONS			
REV.	DESCRIPTION	DATE	BY
1	ORIGINAL	04/03/2020	J.L.
2	ADD 0.70, 19.60, 3.95, 3.60±0.05, 4.35, ADD HOUSING COLOR	02/07/2025	J.S.M.



SPECIFICATION:

HOUSING: PA66, UL94V-0, NATURAL

CURRENT RATING: 2A AC/DC

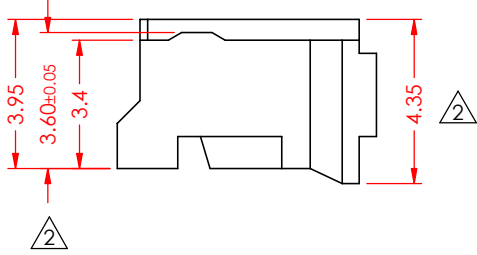
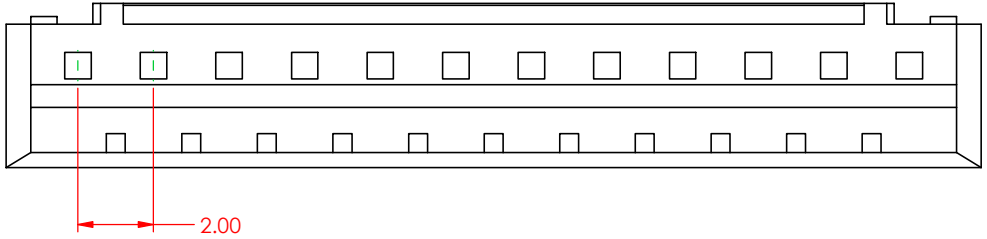
VOLTAGE RATING: 100V AC/DC


TEMPERATURE RATING: -25°C ~ 85°C

CONTACT RESISTANCE: 10mΩ MAX

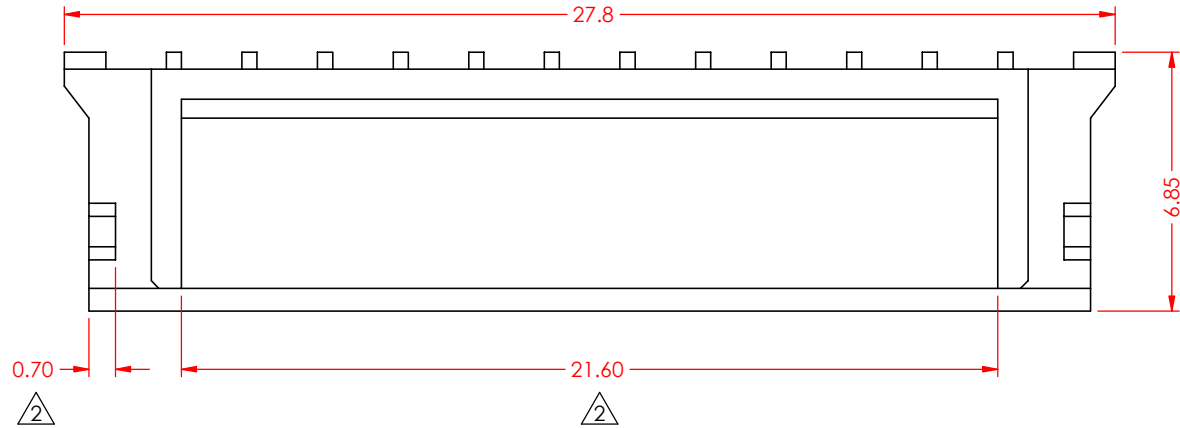
INSULATOR RESISTANCE: 1000MΩ MIN

WITHSTANDING VOLTAGE: 800V AC / 60s



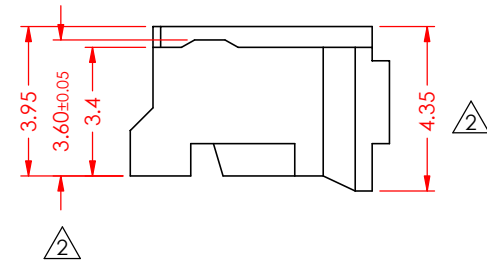
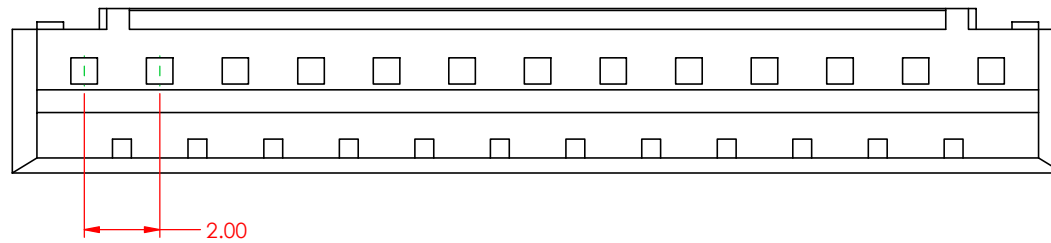
		DRAWN BY		C.B.		140 SERIES FEMALE CRIMP CONTACT HOUSING					
		DRAWN DATE		04/03/2020							
		CHECKED BY		J.L							
		CHECK DATE		02/07/2025		PART NUMBER		140-512-210-011			
RoHS COMPLIANT	THESE DRAWINGS AND SPECIFICATIONS ARE THE PROPERTY OF EDAC, AND SHALL NOT BE REPRODUCED , OR COPIED OR USED AS THE BASIS FOR THE MANUFACTURE OR SALE OF APPARATUS WITHOUT WRITTEN PERMISSION.	TOLERANCES		ALL DIMENSIONS AND TOLERANCES IN MM		MATERIAL		PA66		SIZE	A
		.X	±0.30			REVISION					
		.XX	±0.20							R2	
		.XXX				SCALE	5:1	SHEET	1	OF	1


REVISIONS			
REV.	DESCRIPTION	DATE	BY
1	ORIGINAL	04/03/2020	J.L.
2	ADD 0.70, 21.60, 3.95, 3.60±0.05, 4.35, ADD HOUSING COLOR	02/07/2025	J.S.M.



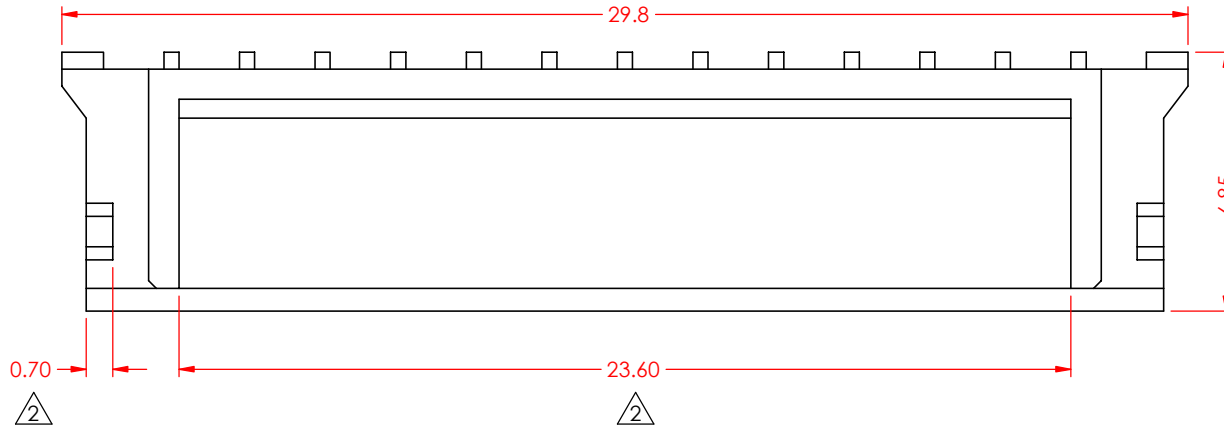
SPECIFICATION:

HOUSING:	PA66, UL94V-0, NATURAL
CURRENT RATING:	2A AC/DC
VOLTAGE RATING:	100V AC/DC
TEMPERATURE RATING:	-25°C ~ 85°C
CONTACT RESISTANCE:	10mΩ MAX
INSULATOR RESISTANCE:	1000MΩ MIN
WITHSTANDING VOLTAGE:	800V AC / 60s



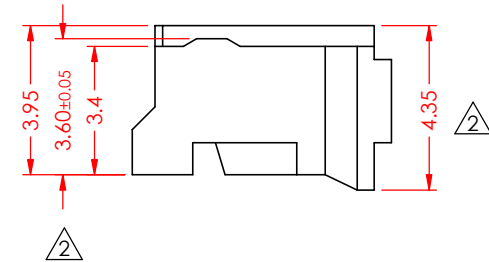
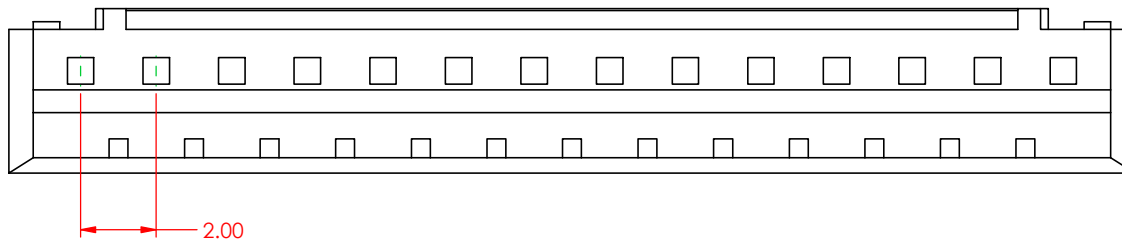
		DRAWN BY		C.B.		140 SERIES FEMALE CRIMP CONTACT HOUSING							
		DRAWN DATE		04/03/2020									
		CHECKED BY		J.L									
				CHECK DATE		02/07/2025		PART NUMBER		140-513-210-011			
RoHS COMPLIANT	THESE DRAWINGS AND SPECIFICATIONS ARE THE PROPERTY OF EDAC, AND SHALL NOT BE REPRODUCED , OR COPIED OR USED AS THE BASIS FOR THE MANUFACTURE OR SALE OF APPARATUS WITHOUT WRITTEN PERMISSION.	TOLERANCES		ALL DIMENSIONS AND TOLERANCES IN MM		MATERIAL		PA66		SIZE		A	
		.X	±0.30							REVISION			
		.XX	±0.20							R2			
		.XXX				SCALE		5:1		SHEET		1	


REVISIONS			
REV.	DESCRIPTION	DATE	BY
1	ORIGINAL	04/03/2020	J.L.
2	ADD 0.70, 23.60, 3.95, 3.60±0.05, 4.35, ADD HOUSING COLOR	02/07/2025	J.S.M.



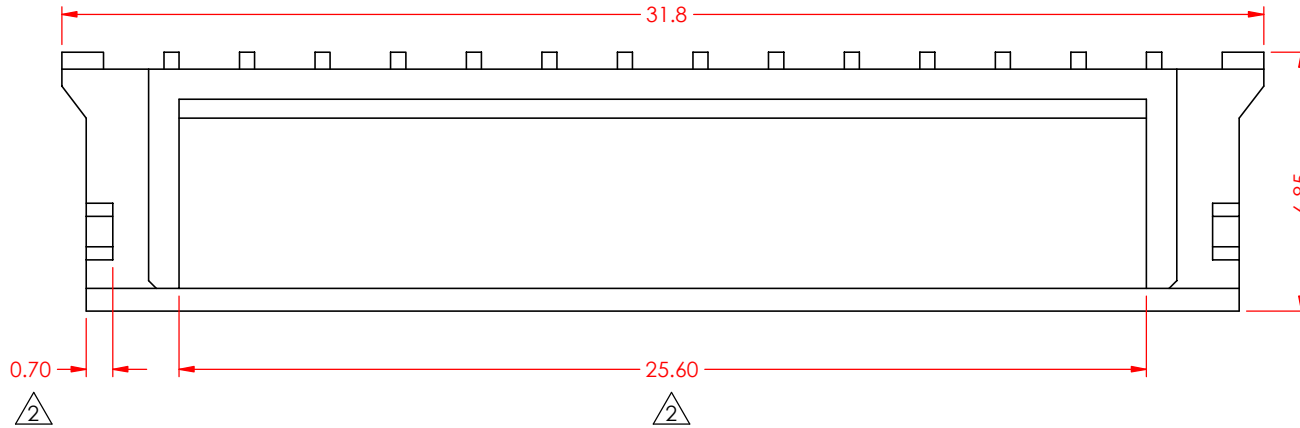
SPECIFICATION:

HOUSING:	PA66, UL94V-0, NATURAL
CURRENT RATING:	2A AC/DC
VOLTAGE RATING:	100V AC/DC
TEMPERATURE RATING:	-25°C ~ 85°C
CONTACT RESISTANCE:	10mΩ MAX
INSULATOR RESISTANCE:	1000MΩ MIN
WITHSTANDING VOLTAGE:	800V AC / 60s



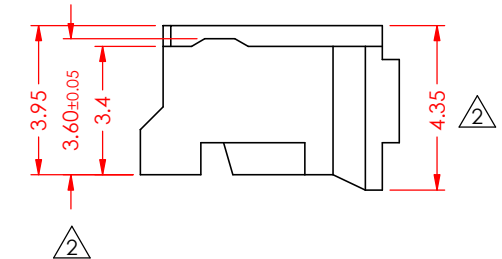
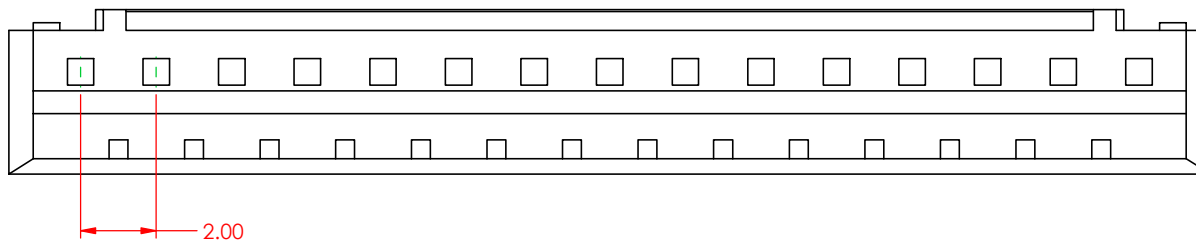
		DRAWN BY	C.B.		140 SERIES FEMALE CRIMP CONTACT HOUSING					
		DRAWN DATE	04/03/2020							
		CHECKED BY	J.L							
		CHECK DATE	02/07/2025		PART NUMBER	140-514-210-011				
RoHS COMPLIANT	THESE DRAWINGS AND SPECIFICATIONS ARE THE PROPERTY OF EDAC, AND SHALL NOT BE REPRODUCED , OR COPIED OR USED AS THE BASIS FOR THE MANUFACTURE OR SALE OF APPARATUS WITHOUT WRITTEN PERMISSION.	TOLERANCES		ALL DIMENSIONS AND TOLERANCES IN MM		MATERIAL	PA66		SIZE	A
		.X	±0.30					REVISION		
		.XX	±0.20					R2		
		.XXX				SCALE	5:1	SHEET	1	OF


REVISIONS			
REV.	DESCRIPTION	DATE	BY
1	ORIGINAL	04/03/2020	J.L.
2	ADD 0.70, 25.60, 3.95, 3.60±0.05, 4.35, ADD HOUSING COLOR	02/07/2025	J.S.M.



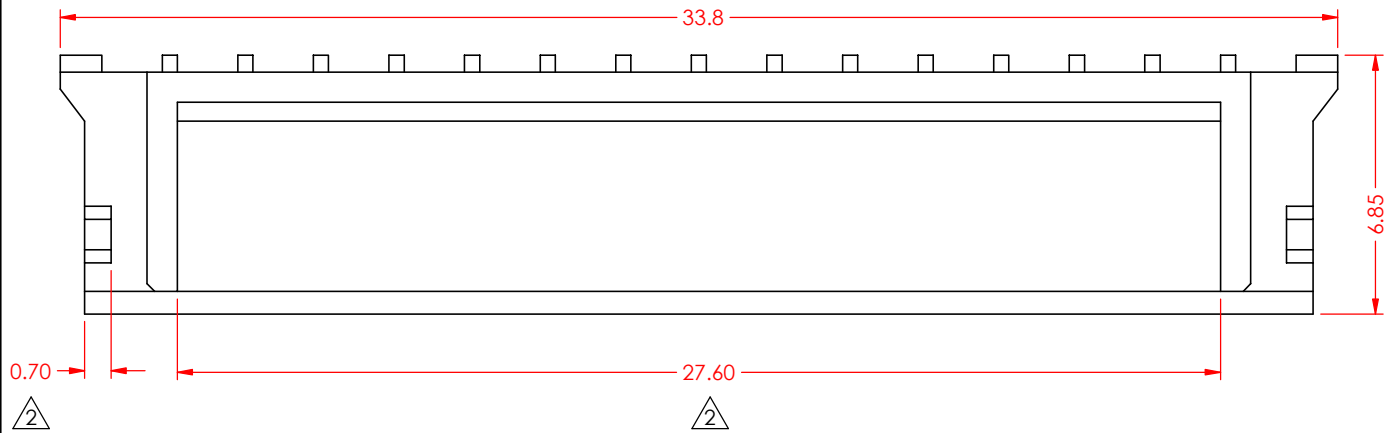
SPECIFICATION:

HOUSING:	PA66, UL94V-0, NATURAL
CURRENT RATING:	2A AC/DC
VOLTAGE RATING:	100V AC/DC
TEMPERATURE RATING:	-25°C ~ 85°C
CONTACT RESISTANCE:	10mΩ MAX
INSULATOR RESISTANCE:	1000MΩ MIN
WITHSTANDING VOLTAGE:	800V AC / 60s



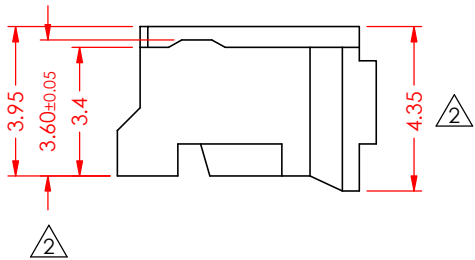
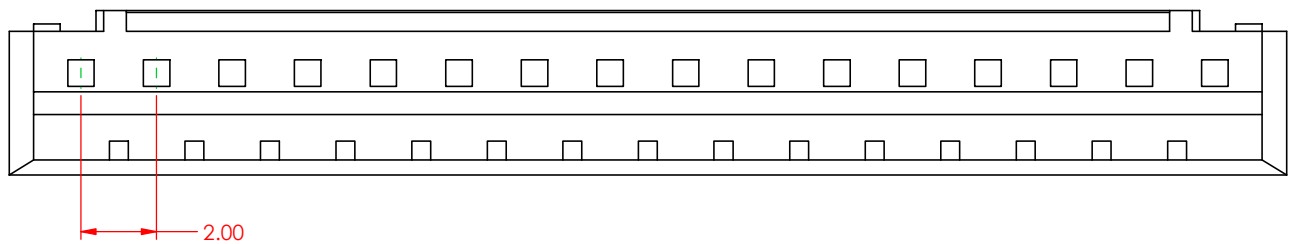
		DRAWN BY		C.B.		140 SERIES FEMALE CRIMP CONTACT HOUSING					
		DRAWN DATE		04/03/2020							
		CHECKED BY		J.L							
				CHECK DATE		02/07/2025		PART NUMBER		140-515-210-011	
RoHS COMPLIANT	THESE DRAWINGS AND SPECIFICATIONS ARE THE PROPERTY OF EDAC, AND SHALL NOT BE REPRODUCED , OR COPIED OR USED AS THE BASIS FOR THE MANUFACTURE OR SALE OF APPARATUS WITHOUT WRITTEN PERMISSION.	TOLERANCES		ALL DIMENSIONS AND TOLERANCES IN MM		MATERIAL		PA66		SIZE	A
		.X	±0.30							REVISION	
		.XX	±0.20							R2	
		.XXX				SCALE	5:1	SHEET	1	OF	1


REVISIONS			
REV.	DESCRIPTION	DATE	BY
1	ORIGINAL	04/03/2020	J.L.
2	ADD 0.70, 27.60, 3.95, 3.60±0.05, 4.35, ADD HOUSING COLOR	02/07/2025	J.S.M.



SPECIFICATION:

HOUSING:	PA66, UL94V-0, NATURAL
CURRENT RATING:	2A AC/DC
VOLTAGE RATING:	100V AC/DC
TEMPERATURE RATING:	-25°C ~ 85°C
CONTACT RESISTANCE:	10mΩ MAX
INSULATOR RESISTANCE:	1000MΩ MIN
WITHSTANDING VOLTAGE:	800V AC / 60s



		DRAWN BY		C.B.	140 SERIES FEMALE CRIMP CONTACT HOUSING						
		DRAWN DATE		04/03/2020							
		CHECKED BY		J.L	PART NUMBER		140-516-210-011				
		CHECK DATE		02/07/2025							
RoHS COMPLIANT	THESE DRAWINGS AND SPECIFICATIONS ARE THE PROPERTY OF EDAC, AND SHALL NOT BE REPRODUCED , OR COPIED OR USED AS THE BASIS FOR THE MANUFACTURE OR SALE OF APPARATUS WITHOUT WRITTEN PERMISSION.	TOLERANCES		ALL DIMENSIONS AND TOLERANCES IN MM		MATERIAL		PA66		SIZE	A
		.X	±0.30			REVISION					
		.XX	±0.20								
		.XXX				SCALE		5:1	SHEET	1	OF