

		<b>161 Alden Road, Units 7 &amp; 8, Markham, Ontario Canada L3R 3W7</b> Tel: +1 416 754-3322      Fax: +1 416-754-3299 Email: support@edac.net      http://www.edac.net	
<b>ENGINEERING CHANGE NOTICE</b>			
Originator:	Mit Patel	Date:	Document Number
Phone No.	416-754-3322	August 8, 2025	20250424-01
Email Address:	<a href="mailto:mpatel@edac.net">mpatel@edac.net</a>		
Department	Quality	Revision Number	SHEET
		2	1 of 20

**CHANGE TYPE:**

☐ CLASS I      Customer notification and approval required prior to implementation  
☒ CLASS II      Customer notification only, no approval required  
☐ CLASS III      No customer notification required

**REASON OF CHANGE**

Commercial: Edac Group has decided to discontinue the availability of these parts

**DESCRIPTION OF CHANGE:**

**Reason for revision:** 15 additional parts have been added to the list.

Part numbers listed below have reached their End of Life (EOL) as the Edac Group has discontinued their production. No direct replacements are available, and these items have now been classified as obsolete.

#	EDAC P/N	Revisions
1	685C0722210115E	ECN Rev 1
2	686C0731210123E	
3	685A04222A01E1E	
4	686A04222A01E1E	
5	685A07222A01E1E	ECN Rev 2
6	685F0422350125E	
7	686A07222A01E1E	
8	686A1252260023E	
9	686B0822250210E	
10	686E0423250110E	
11	686F0432350125E	
12	687A04210A01E06	
13	687A12522600301	
14	687B0812A512100	
15	687F0432050110B	
16	687K05510501138	
17	688A04210A01E06	
18	685B0212P011B0E	
19	686B02122001B1E	

**PARTIES AFFECTED**

<input checked="" type="checkbox"/> Customer <input checked="" type="checkbox"/> Distributors <input type="checkbox"/> Suppliers	<input type="checkbox"/> NORCOMP <input type="checkbox"/> MH <input checked="" type="checkbox"/> ETW	<input checked="" type="checkbox"/> ECA <input checked="" type="checkbox"/> EDG <input checked="" type="checkbox"/> EDAC UK
--	--	---

**KEY TARGET DUE DATES IF CHANGE IS APPROVED TO PROCEED** (check if applicable and show target dates as known)

<input type="checkbox"/> Submit Quote _____ <input type="checkbox"/> Prod. Trial Run _____ <input type="checkbox"/> Run at Rate _____	<input type="checkbox"/> PPAP from Supplier _____ <input type="checkbox"/> MRD of Production Parts _____ <input type="checkbox"/> UL / CSA / RoHS / REACH _____
---	---

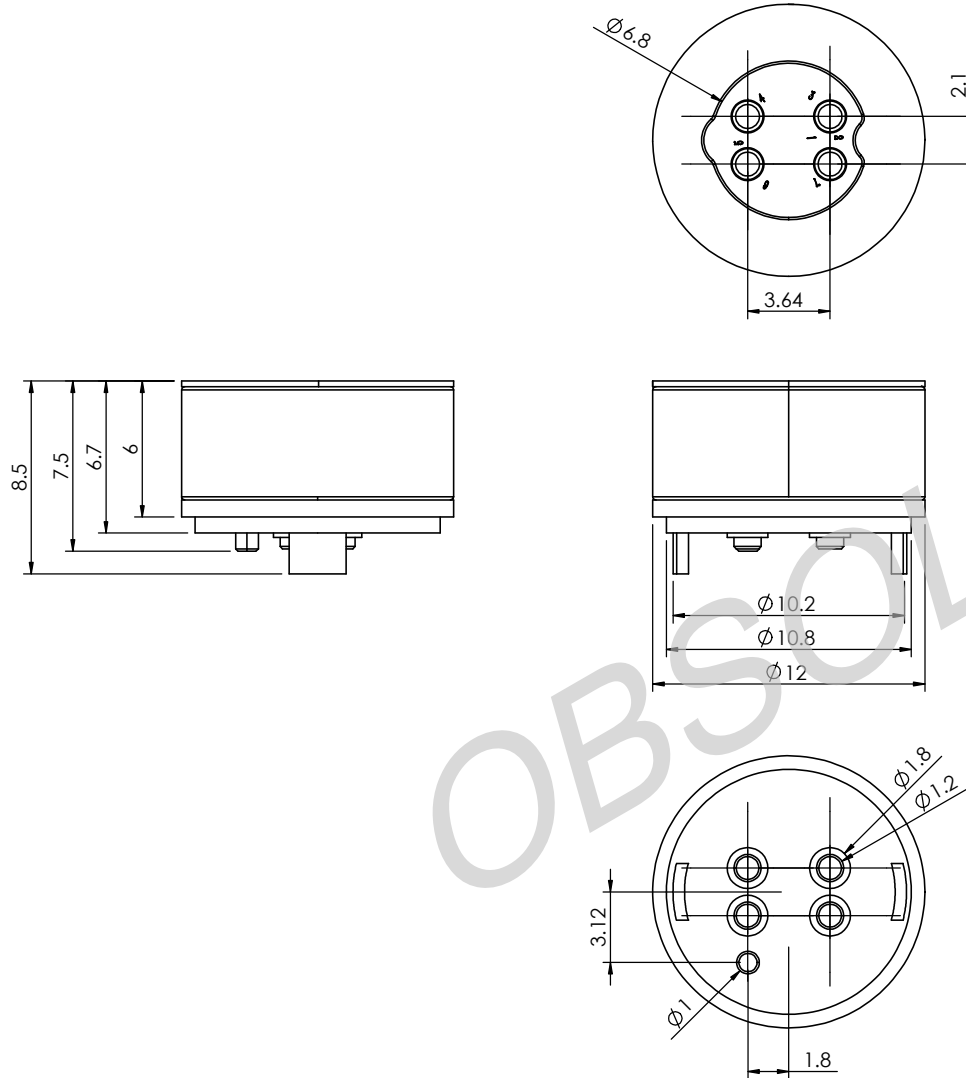
ACKNOWLEDGEMENT FOR ECN INITIATION: (OPTIONALS)	STATUS						
<table style="width: 100%;"> <tr> <td style="width: 50%;"> <input type="checkbox"/> Tooling Rep _____  <input type="checkbox"/> Mfg Eng Rep _____  <input type="checkbox"/> Production Rep _____  <input type="checkbox"/> Materials Rep _____  <input checked="" type="checkbox"/> Quality Rep <u>Mit Patel</u> </td> <td style="width: 50%;"> <input checked="" type="checkbox"/> Marketing Rep <u>Marco Lamanna</u>  <input type="checkbox"/> Facilities Rep _____  <input type="checkbox"/> Sales Rep. <u>Esther Marothy</u>  <input type="checkbox"/> Product Eng. Rep. _____  <input type="checkbox"/> Purchasing Rep _____           </td> </tr> </table>	<input type="checkbox"/> Tooling Rep _____ <input type="checkbox"/> Mfg Eng Rep _____ <input type="checkbox"/> Production Rep _____ <input type="checkbox"/> Materials Rep _____ <input checked="" type="checkbox"/> Quality Rep <u>Mit Patel</u>	<input checked="" type="checkbox"/> Marketing Rep <u>Marco Lamanna</u> <input type="checkbox"/> Facilities Rep _____ <input type="checkbox"/> Sales Rep. <u>Esther Marothy</u> <input type="checkbox"/> Product Eng. Rep. _____ <input type="checkbox"/> Purchasing Rep _____	<input checked="" type="checkbox"/> <b>APPROVED</b> <b>CCS CHANGE REQUEST #</b>				
<input type="checkbox"/> Tooling Rep _____ <input type="checkbox"/> Mfg Eng Rep _____ <input type="checkbox"/> Production Rep _____ <input type="checkbox"/> Materials Rep _____ <input checked="" type="checkbox"/> Quality Rep <u>Mit Patel</u>	<input checked="" type="checkbox"/> Marketing Rep <u>Marco Lamanna</u> <input type="checkbox"/> Facilities Rep _____ <input type="checkbox"/> Sales Rep. <u>Esther Marothy</u> <input type="checkbox"/> Product Eng. Rep. _____ <input type="checkbox"/> Purchasing Rep _____						
<p><b>APPROVALS FOR ECN INITIATION (REQUIRED)</b></p> <table style="width: 100%;"> <tr> <td style="width: 50%;"> <input checked="" type="checkbox"/> <b>General Manager</b>  <u>Bob Sakitkovski</u> </td> <td style="width: 50%;"> <input checked="" type="checkbox"/> <b>Quality Engineer</b>  <u>Mit Patel</u> </td> </tr> <tr> <td> <input checked="" type="checkbox"/> <b>Engineering Manager</b>  <u>Ronnie Sta Monica</u> </td> <td> <input checked="" type="checkbox"/> <b>Engineer</b>  <u>Vinesh Kamania</u> </td> </tr> <tr> <td> <input checked="" type="checkbox"/> <b>Business Development Manager</b>  <u>Kobie Samuels</u> </td> <td></td> </tr> </table> <p style="text-align: right; margin-top: -20px;"><i>K. Samuels 8-14-25</i></p>	<input checked="" type="checkbox"/> <b>General Manager</b> <u>Bob Sakitkovski</u>	<input checked="" type="checkbox"/> <b>Quality Engineer</b> <u>Mit Patel</u>	<input checked="" type="checkbox"/> <b>Engineering Manager</b> <u>Ronnie Sta Monica</u>	<input checked="" type="checkbox"/> <b>Engineer</b> <u>Vinesh Kamania</u>	<input checked="" type="checkbox"/> <b>Business Development Manager</b> <u>Kobie Samuels</u>		<input type="checkbox"/> <b>REJECTED</b> <b>Change REJECTED by:</b>  <b>Rejected Date:</b>
<input checked="" type="checkbox"/> <b>General Manager</b> <u>Bob Sakitkovski</u>	<input checked="" type="checkbox"/> <b>Quality Engineer</b> <u>Mit Patel</u>						
<input checked="" type="checkbox"/> <b>Engineering Manager</b> <u>Ronnie Sta Monica</u>	<input checked="" type="checkbox"/> <b>Engineer</b> <u>Vinesh Kamania</u>						
<input checked="" type="checkbox"/> <b>Business Development Manager</b> <u>Kobie Samuels</u>							

TOLERANCE UNLESS OTHERWISE SPECIFIED	
.X	±0.15
.XX	±0.10

THIS IS A C.A.D. GENERATED DRAWING  
DO NOT MAKE MANUAL REVISIONS TO MASTER.



ISSUE NUMBER	
ORIGINAL	①
ADD NOTE 6 & 7	
P.M.	AUG 9, 2023 ②
DELETE DIM Ø1.45 & REVISE NOTE 1	
L.K.	AUG 18, 2023 ③



#### SPECIFICATION:

##### 1- MATERIAL:

CONTACT: BRASS, GOLD FLASH PLATING ALL OVER NICKEL UNDERPLATING  
HOUSING: PA49T, BLACK

MAGNET: N52

##### 2- ELECTRICAL:

RATED VOLTAGE (PER CONTACT): 5V

RATED CURRENT (PER CONTACT): 2A

INSULATION RESISTANCE: 100MEGAOHMS MIN.

DIELECTRIC WITHSTAND VOLTAGE: 100V AT 60Hz

CONTACT RESISTANCE: 30mOHMS MAX. BEFORE TEST AND 60mOHMS MAX. AFTER TEST

3- MECHANICAL LIFE: 30,000 CYCLES MIN.

4- SALT SPRAY TEST: 5% SALT SPRAY CONCENTRATION, TEMPERATURE 35°C, TEST TIME 48 HOURS,  
NO CORROSION.

5- WORKING TEMPERATURE RANGE: -30~+85°C.

6- RECOMMENDED SOLDERING PROCESS ARE SELECTIVE  
SOLDERING OR MANUAL SOLDERING. OTHER FORMS OF  
SOLDERING SUCH AS WAVE SOLDER OR REFLOW SOLDER  
ARE NOT RECOMMENDED AND CAN POTENTIALLY CAUSE  
DEMAGNETIZATION OF MAGNET IN THE CONNECTOR

7- MATING WITH: 686A04222A01E1E



THIS SERIES FULLY CONFORMS TO  
THE EUROPEAN UNION DIRECTIVES  
2011/65/EU FOR RoHS COMPLIANCY.



YOUR CONNECTION TO QUALITY & SERVICE

EDAC INC  
TORONTO, ONTARIO  
CANADA

THESE DRAWINGS AND SPECIFICATIONS  
ARE THE PROPERTY OF EDAC INC., AND  
SHALL NOT BE REPRODUCED, OR COPIED  
OR USED AS THE BASIS FOR THE  
MANUFACTURE OR SALE OF APPARATUS  
WITHOUT WRITTEN PERMISSION.

MAGNETIC SPRING LOADED CONNECTOR, 4POS, MALE		ACAD REFERENCE NO.:	685A04222A01E1E	UNIT: MM
		DRAWN:	J.L.	DATE: 8/24/2023
		CHECKED:	R.S.M	DATE: 8/24/2023
		SCALE:	(IN CAD 1:1)	SHEET 1 OF 1
		DRAWING NUMBER:	685A04222A01E1E	ISSUE 3
		PART NUMBER:	685A04222A01E1E	

TOLERANCE UNLESS OTHERWISE SPECIFIED	
.X	±0.15
.XX	±0.10

THIS IS A C.A.D. GENERATED DRAWING  
DO NOT MAKE MANUAL REVISIONS TO MASTER.



ISSUE NUMBER

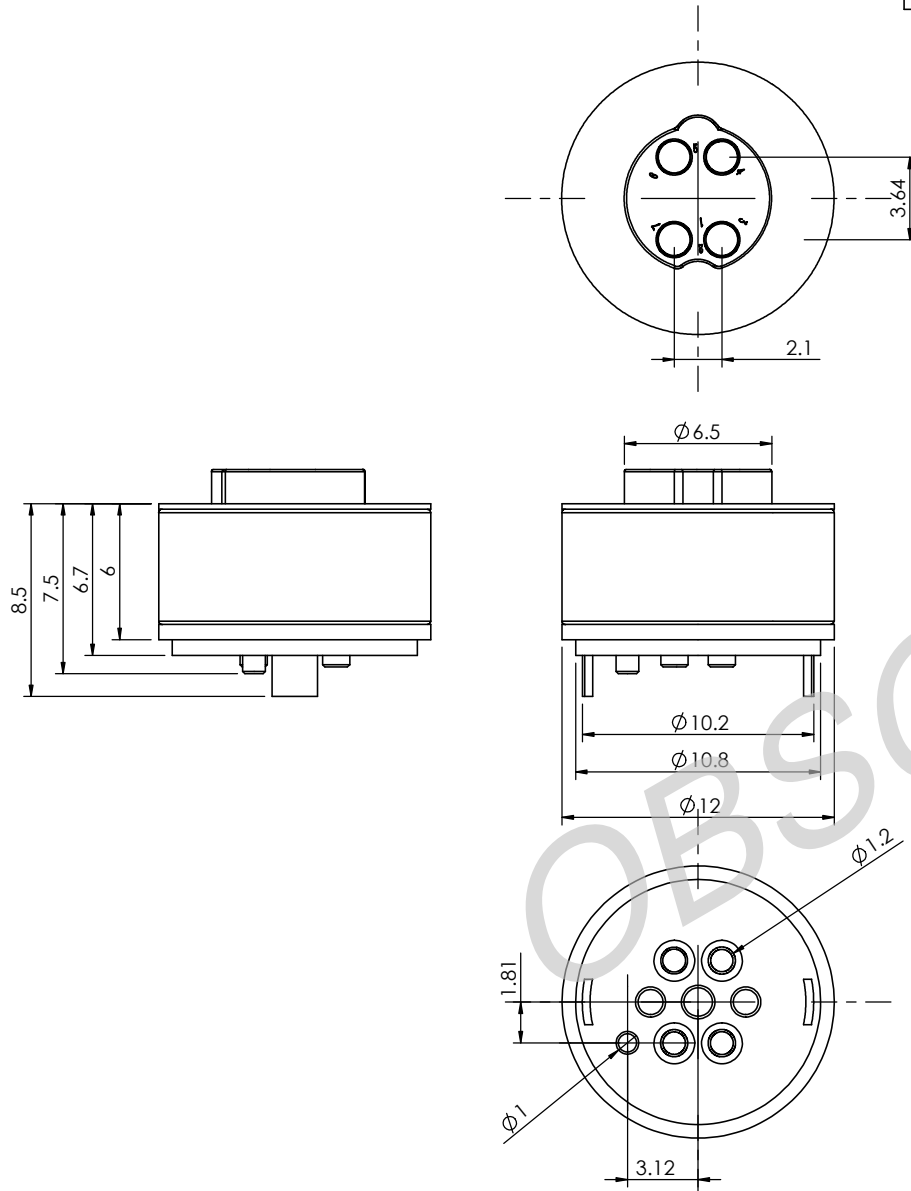
ORIGINAL ①

ADD NOTE 6 & 7

P.M. AUG. 11/2023 ②

REVISE NOTE 1

L.K. AUG. 18/2023 ③



#### SPECIFICATION:

##### 1- MATERIAL:

CONTACT: BRASS, GOLD FLASH PLATING ALL OVER NICKEL UNDERPLATING  
HOUSING: PA9T, BLACK  
MAGNET: N52

##### 2- ELECTRICAL:

RATED VOLTAGE (PER CONTACT): 5V  
RATED CURRENT (PER CONTACT): 2A  
INSULATION RESISTANCE: 100MEGAOHMS MIN.  
DIELECTRIC WITHSTAND VOLTAGE: 100V AT 60Hz  
CONTACT RESISTANCE: 30mOHMS MAX. BEFORE TEST AND 60mOHMS MAX. AFTER TEST

3- SALT SPRAY TEST: 5% SALT SPRAY CONCENTRATION, TEMPERATURE 35°C, TEST TIME 48 HOURS, NO CORROSION.

4- MECHANICAL LIFE: 30,000 CYCLES MIN.

5- WORKING TEMPERATURE RANGE: -30~+85°C

6- RECOMMENDED SOLDERING PROCESS ARE SELECTIVE SOLDERING OR MANUAL SOLDERING. OTHER FORMS OF SOLDERING SUCH AS WAVE SOLDER OR REFLOW SOLDER ARE NOT RECOMMENDED AND CAN POTENTIALLY CAUSE DEMAGNETIZATION OF MAGNET IN THE CONNECTOR

7- MATING WITH: 685A04222A01E1E

### MAGNETIC SPRING LOADED CONNECTOR, 4POS, FEMALE

ACAD REFERENCE NO.: 686A04222A01E1E UNIT: MM

DRAWN: J.L. DATE: 8/23/2023

CHECKED: R.S.M. DATE: 8/23/2023

SCALE: (IN CAD 1:1) SHEET 1 OF 1

DRAWING NUMBER: 686A04222A01E1E ISSUE

PART NUMBER: 686A04222A01E1E 3



THIS SERIES FULLY CONFORMS TO  
THE EUROPEAN UNION DIRECTIVES  
2011/65/EU FOR RoHS COMPLIANCY.



YOUR CONNECTION TO QUALITY & SERVICE

EDAC INC  
TORONTO, ONTARIO  
CANADA

THESE DRAWINGS AND SPECIFICATIONS  
ARE THE PROPERTY OF EDAC INC., AND  
SHALL NOT BE REPRODUCED, OR COPIED  
OR USED AS THE BASIS FOR THE  
MANUFACTURE OR SALE OF APPARATUS  
WITHOUT WRITTEN PERMISSION.

TOLERANCE UNLESS OTHERWISE SPECIFIED	
.X	±0.15
.XX	±0.10

THIS IS A C.A.D. GENERATED DRAWING  
DO NOT MAKE MANUAL REVISIONS TO MASTER.

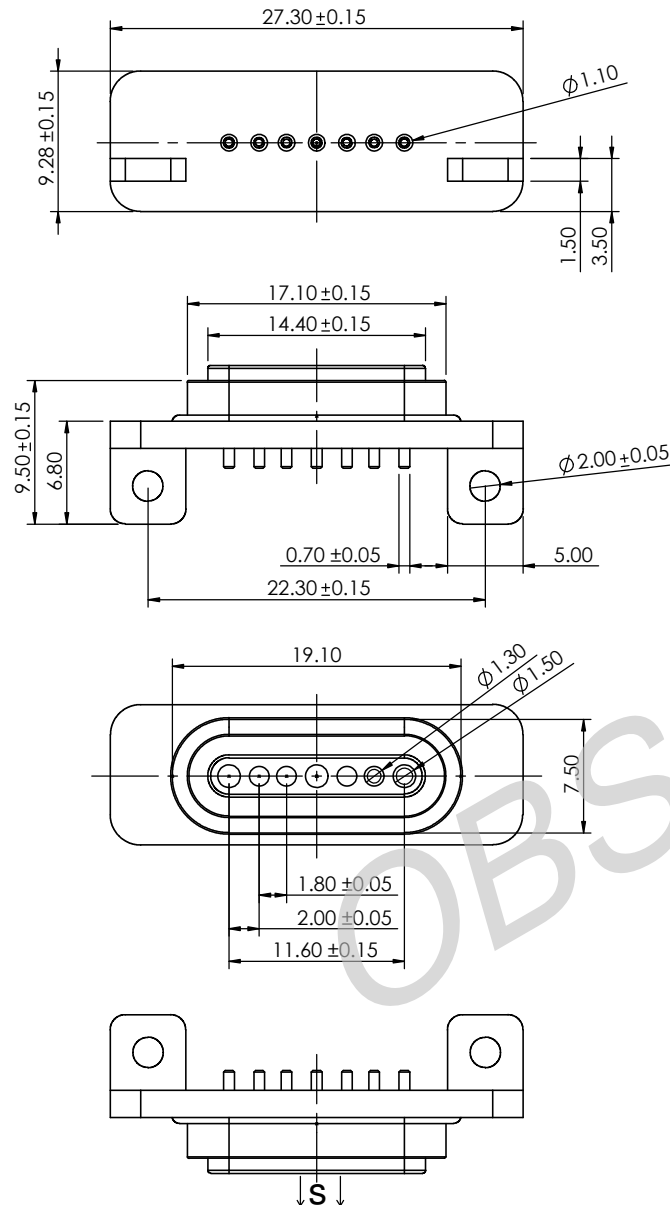


ISSUE NUMBER

ORIGINAL ①

ADD NOTE 4 & 5

P.M. AUG. 13/2023 ②



#### SPECIFICATION:

##### 1- MATERIAL:

CONTACT: BRASS, GOLD FLASH PLATING ALL OVER NICKEL UNDERPLATING  
HOUSING: PA9T, BLACK  
MAGNET: N52

##### 2- ELECTRICAL:

RATED VOLTAGE (PER CONTACT): 24V  
RATED CURRENT (PER CONTACT): 3A  
INSULATION RESISTANCE: 100MEGAOHMS MIN.  
DIELECTRIC WITHSTAND VOLTAGE: 100V AT 60Hz  
CONTACT RESISTANCE: 25mOHMS MAX. BEFORE TEST AND 60mOHMS MAX. AFTER TEST

##### 3- WORKING TEMPERATURE RANGE: -30°C~+85°C.

4- RECOMMENDED SOLDERING PROCESS ARE SELECTIVE  
SOLDERING OR MANUAL SOLDERING. OTHER FORMS OF  
SOLDERING SUCH AS WAVE SOLDER OR REFLOW SOLDER  
ARE NOT RECOMMENDED AND CAN POTENTIALLY CAUSE  
DEMAGNETIZATION OF MAGNET IN THE CONNECTOR

##### 5- MATING WITH: 685C072210115E OR 687C0722A101104



THIS SERIES FULLY CONFORMS TO  
THE EUROPEAN UNION DIRECTIVES  
2011/65/EU FOR RoHS COMPLIANCY.



YOUR CONNECTION TO QUALITY & SERVICE

EDAC INC  
TORONTO, ONTARIO  
CANADA

THESE DRAWINGS AND SPECIFICATIONS  
ARE THE PROPERTY OF EDAC INC., AND  
SHALL NOT BE REPRODUCED, OR COPIED  
OR USED AS THE BASIS FOR THE  
MANUFACTURE OR SALE OF APPARATUS  
WITHOUT WRITTEN PERMISSION.

### MAGNETIC SPRING LOADED CONNECTOR 7POS, FEMALE

ACAD REFERENCE NO.: 686C0731210123E UNIT: MM

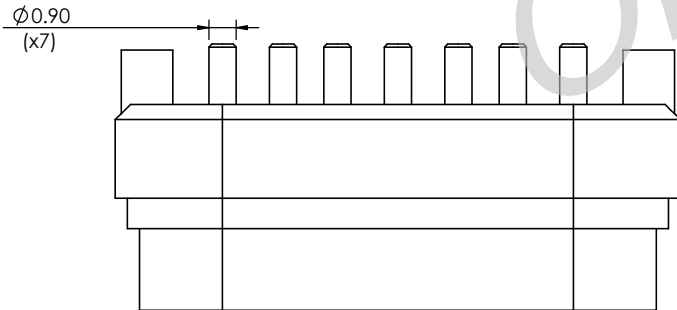
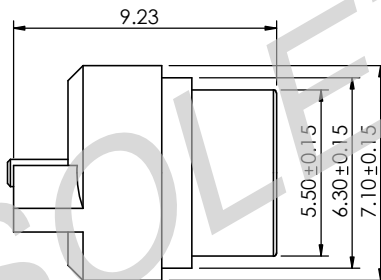
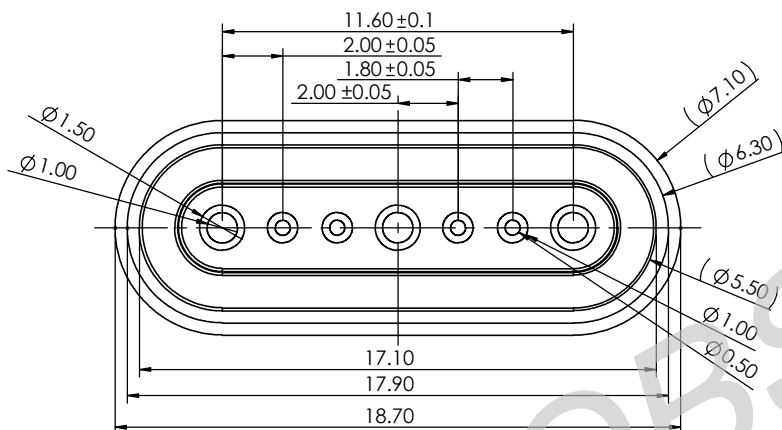
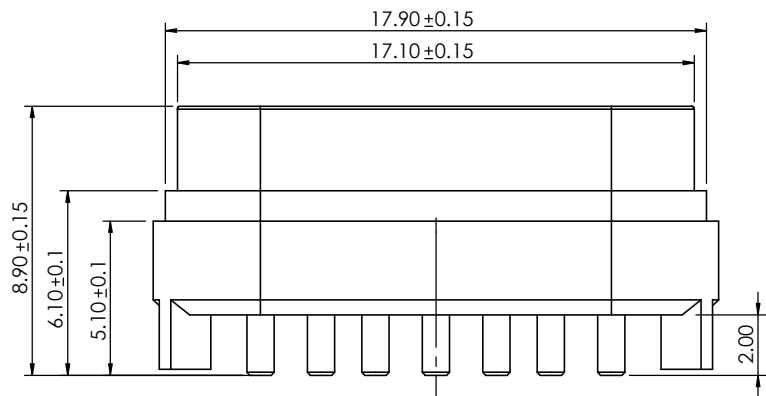
DRAWN: J.L. DATE: 8/21/2023

CHECKED: R.S.M. DATE: 8/21/2023

SCALE: (IN CAD 1:1) SHEET 1 OF 1

DRAWING NUMBER: 686C0731210123E ISSUE

PART NUMBER: 686C0731210123E 2



TOLERANCE UNLESS OTHERWISE SPECIFIED	
.X	±0.15
.XX	±0.10

THIS IS A C.A.D. GENERATED DRAWING  
DO NOT MAKE MANUAL REVISIONS TO MASTER.



ISSUE NUMBER

ORIGINAL	①
ADD NOTE 6 & 7	
P.M. AUG. 13/2023	②
REVISE NOTE & DELETE NOTE 4, 9.23 WAS 8.70	
L.K. AUG. 18/2023	③

#### SPECIFICATION:

##### 1- MATERIAL:

CONTACT: BRASS, GOLD FLASH PLATING ALL OVER NICKEL UNDERPLATING  
HOUSING : PA9T, BLACK  
SPRING: SUS304  
MAGNET: N52

##### 2- ELECTRICAL:

RATED VOLTAGE (PER CONTACT): 12V  
RATED CURRENT (PER CONTACT): 2A  
INSULATION RESISTANCE: 100MEGAOHMS MIN.  
DIELECTRIC WITHSTAND VOLTAGE: 100V AT 60Hz  
CONTACT RESISTANCE: 30mOHMS MAX.

##### 3- RECOMMENDED WORKING STROKE & FORCE:

STROKE 1.05MM (PER CONTACT): 50gf±20gf  
STROKE 0.95MM (PER CONTACT): 45gf±20gf

##### 4- WORKING TEMPERATURE RANGE: -30~+85°C.

5- RECOMMENDED SOLDERING PROCESS ARE SELECTIVE  
SOLDERING OR MANUAL SOLDERING. OTHER FORMS OF  
SOLDERING SUCH AS WAVE SOLDER OR REFLOW SOLDER  
ARE NOT RECOMMENDED AND CAN POTENTIALLY CAUSE  
DEMAGNETIZATION OF MAGNET IN THE CONNECTOR

##### 6- MATING WITH: 686C0731210123E



THIS SERIES FULLY CONFORMS TO  
THE EUROPEAN UNION DIRECTIVES  
2011/65/EU FOR RoHS COMPLIANCY.



YOUR CONNECTION TO QUALITY & SERVICE

EDAC INC  
TORONTO, ONTARIO  
CANADA

THESE DRAWINGS AND SPECIFICATIONS  
ARE THE PROPERTY OF EDAC INC., AND  
SHALL NOT BE REPRODUCED, OR COPIED  
OR USED AS THE BASIS FOR THE  
MANUFACTURE OR SALE OF APPARATUS  
WITHOUT WRITTEN PERMISSION.

### MAGNETIC SPRING LOADED CONNECTOR, 7POS, MALE

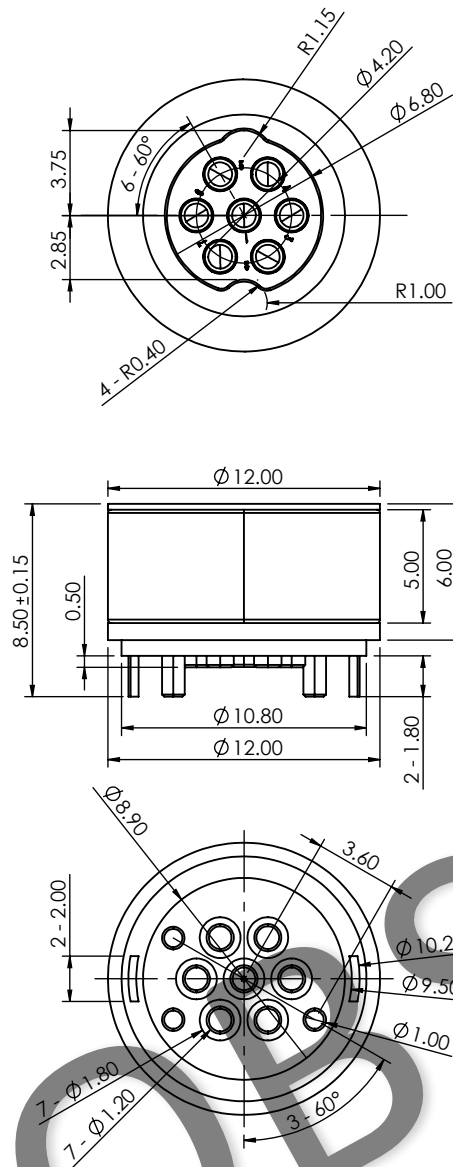
ACAD REFERENCE NO.: 685C0722210115E		UNIT: MM
DRAWN: J.L.	DATE: 8/18/2023	
CHECKED: R.S.M	DATE: 8/18/2023	
SCALE: (IN CAD 1:1)	SHEET 1 OF 1	
DRAWING NUMBER: 685C0722210115E	ISSUE	
PART NUMBER: 685C0722210115E	3	

TOLERANCE UNLESS OTHERWISE SPECIFIED	
.X	±0.15
.XX	±0.10

THIS IS A C.A.D. GENERATED DRAWING  
DO NOT MAKE MANUAL REVISIONS TO MASTER.



ISSUE NUMBER	
ORIGINAL	①
ADD NOTE 4 & 5	
P.M.	AUG. 12/2023 ②



#### SPECIFICATION:

- 1- MATERIAL:  
CONTACT: BRASS, GOLD FLASH PLATING ALL OVER NICKEL UNDERPLATING  
HOUSING: PA9T, BLACK  
MAGNET: N52
- 2- ELECTRICAL:  
RATED VOLTAGE (PER CONTACT): 5V  
RATED CURRENT (PER CONTACT): 2A
- 3- WORKING TEMPERATURE RANGE: -30~+85°C.
- 4- RECOMMENDED SOLDERING PROCESS ARE SELECTIVE SOLDERING OR MANUAL SOLDERING. OTHER FORMS OF SOLDERING SUCH AS WAVE SOLDER OR REFLOW SOLDER ARE NOT RECOMMENDED AND CAN POTENTIALLY CAUSE DEMAGNETIZATION OF MAGNET IN THE CONNECTOR
- 5- MATING WITH: 686A07222A01E1E




THIS SERIES FULLY CONFORMS TO  
THE EUROPEAN UNION DIRECTIVES  
2011/65/EU FOR RoHS COMPLIANCY.



EDAC INC  
TORONTO, ONTARIO  
CANADA  
YOUR CONNECTION TO QUALITY & SERVICE

THESE DRAWINGS AND SPECIFICATIONS  
ARE THE PROPERTY OF EDAC INC., AND  
SHALL NOT BE REPRODUCED, OR COPIED  
OR USED AS THE BASIS FOR THE  
MANUFACTURE OR SALE OF APPARATUS  
WITHOUT WRITTEN PERMISSION.

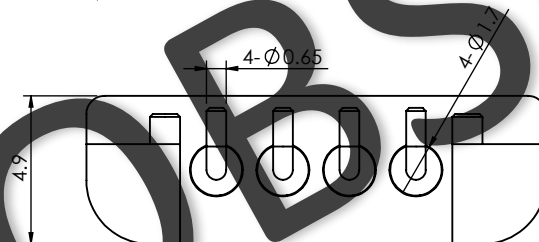
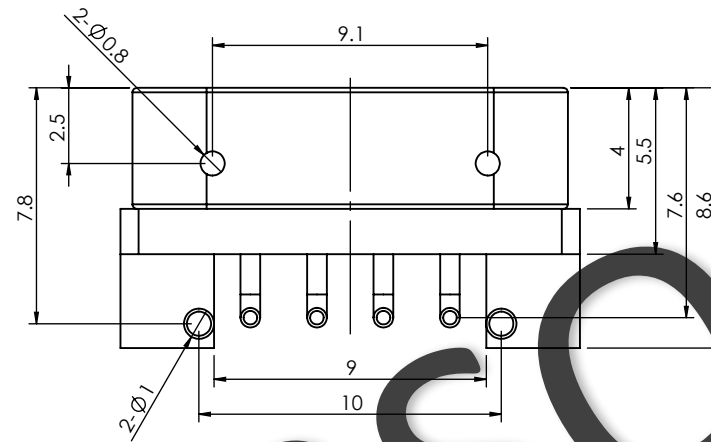
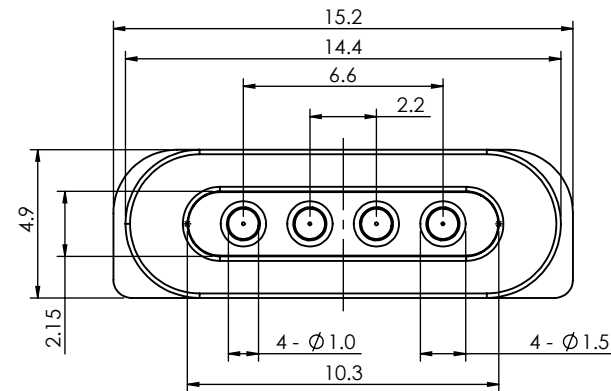
MAGNETIC SPRING LOADED CONNECTOR, 7POS, MALE		ACAD REFERENCE NO.: 685A07222A01E1E		UNIT: MM					
		DRAWN: J.L.	DATE: 8/12/2023						
		CHECKED: R.S.M	DATE: 8/12/2023						
 <div>EDAC INC TORONTO, ONTARIO CANADA  YOUR CONNECTION TO QUALITY &amp; SERVICE</div>		THESE DRAWINGS AND SPECIFICATIONS ARE THE PROPERTY OF EDAC INC.,AND SHALL NOT BE REPRODUCED,OR COPIED OR USED AS THE BASIS FOR THE MANUFACTURE OR SALE OF APPARATUS WITHOUT WRITTEN PERMISSION.		SCALE: (IN CAD 1:1)		SHEET 1 OF 1			
				DRAWING NUMBER: 685A07222A01E1E				ISSUE	
				PART NUMBER: 685A07222A01E1E				2	

TOLERANCE UNLESS OTHERWISE SPECIFIED	
X.	±0.20
.X	±0.15
.XX	±0.10

THIS IS A C.A.D. GENERATED DRAWING  
DO NOT MAKE MANUAL REVISIONS TO MASTER.



ISSUE NUMBER	
ORIGINAL	①
ADD NOTE 6 & 7	
P.M.	AUG. 13/2023 ②



#### SPECIFICATION:

##### 1- MECHANICAL:

HOUSING: PA9T

CONTACT: GOLD FLASH PLATING ALL OVER, NICKEL UNDERPLATING

MAGNET: N52

##### 2- ELECTRICAL:

RATED VOLTAGE (PER CONTACT): 5V

RATED CURRENT (PER CONTACT): 2A

INSULATION RESISTANCE: 100MEGAOHMS MINIMUM

DIELECTRIC

WITHSTANDING VOLTAGE: 100V AT 60Hz.

CONTACT RESISTANCE: 30mOHMS MAXIMUM BEFORE TEST AND

60mOHMS MAX. AFTER TEST.

3- SALT SPRAY TEST: 5% SPRAY CONCENTRATION, TEMPERATURE 35°C,

4- EST TIME 24 HOURS, NO CORROSION.

5- WORKING TEMPERATURE RANGE: -30°C~+85°C

6- RECOMMENDED SOLDERING PROCESS ARE SELECTIVE  
SOLDERING OR MANUAL SOLDERING. OTHER FORMS OF  
SOLDERING SUCH AS WAVE SOLDER OR REFLOW SOLDER  
ARE NOT RECOMMENDED AND CAN POTENTIALLY CAUSE  
DEMAGNETIZATION OF MAGNET IN THE CONNECTOR

7- MATING WITH: 686F0432350125E

### MAGNETIC SPRING LOADED CONNECTOR, 4POS, MALE



YOUR CONNECTION TO QUALITY & SERVICE

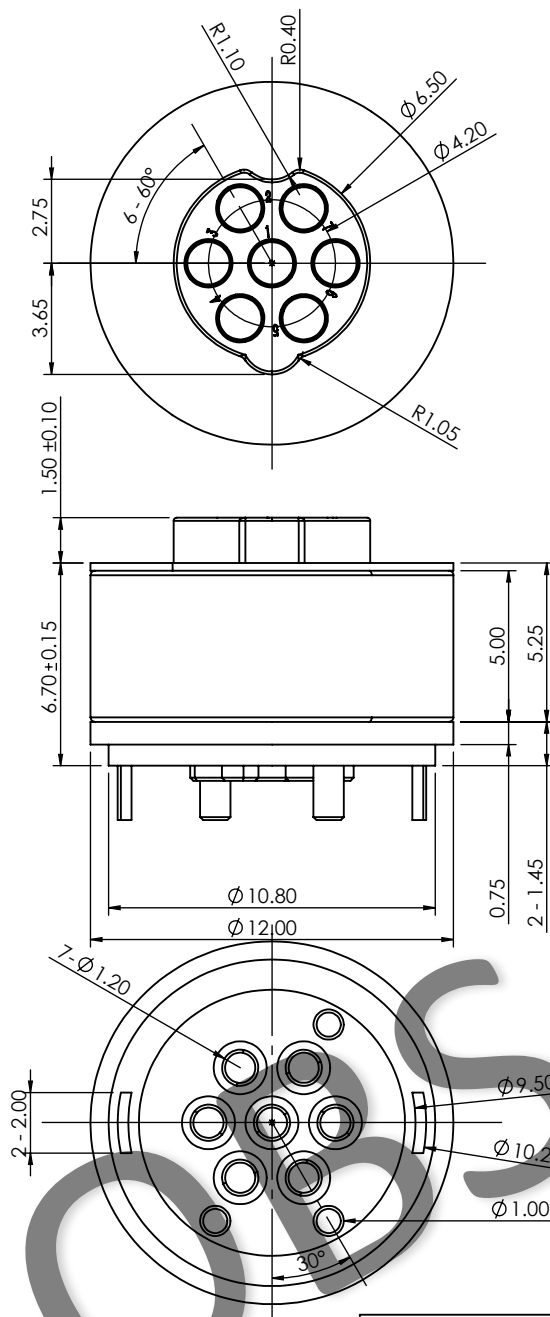
EDAC INC  
TORONTO, ONTARIO  
CANADA

THESE DRAWINGS AND SPECIFICATIONS  
ARE THE PROPERTY OF EDAC INC., AND  
SHALL NOT BE REPRODUCED, OR COPIED  
OR USED AS THE BASIS FOR THE  
MANUFACTURE OR SALE OF APPARATUS  
WITHOUT WRITTEN PERMISSION.

ACAD REFERENCE NO.: 685F0422350125E		UNIT: MM
DRAWN: J.L.	DATE: 8/13/2023	
CHECKED: R.S.M	DATE: 8/13/2023	
SCALE: (IN CAD 1:1)	SHEET 1 OF 1	
DRAWING NUMBER: 685F0422350125E	ISSUE	
PART NUMBER: 685F0422350125E	2	



THIS SERIES FULLY CONFORMS TO  
THE EUROPEAN UNION DIRECTIVES  
2011/65/EU FOR RoHS COMPLIANCY.



TOLERANCE UNLESS OTHERWISE SPECIFIED	
.X	±0.15
.XX	±0.10

THIS IS A C.A.D. GENERATED DRAWING  
DO NOT MAKE MANUAL REVISIONS TO MASTER.



ISSUE NUMBER	
ORIGINAL	①
ADD NOTE 4 & 5	
P.M.	AUG. 12/2023 ②

#### SPECIFICATION:

- MATERIAL:  
CONTACT: BRASS, GOLD FLASH PLATING ALL OVER NICKEL UNDERPLATING  
HOUSING : PA9T, BLACK  
MAGNET : N52
- ELECTRICAL:  
RATED VOLTAGE (PER CONTACT): 5V  
RATED CURRENT (PER CONTACT): 2A
- WORKING TEMPERATURE RANGE: -30~+85°C.
- RECOMMENDED SOLDERING PROCESS ARE SELECTIVE SOLDERING OR MANUAL SOLDERING. OTHER FORMS OF SOLDERING SUCH AS WAVE SOLDER OR REFLOW SOLDER ARE NOT RECOMMENDED AND CAN POTENTIALLY CAUSE DEMAGNETIZATION OF MAGNET IN THE CONNECTOR
- MATING WITH: 685A07222A01E1E



THIS SERIES FULLY CONFORMS TO  
THE EUROPEAN UNION DIRECTIVES  
2011/65/EU FOR RoHS COMPLIANCY.



YOUR CONNECTION TO QUALITY & SERVICE

EDAC INC  
TORONTO, ONTARIO  
CANADA

THESE DRAWINGS AND SPECIFICATIONS  
ARE THE PROPERTY OF EDAC INC., AND  
SHALL NOT BE REPRODUCED, OR COPIED  
OR USED AS THE BASIS FOR THE  
MANUFACTURE OR SALE OF APPARATUS  
WITHOUT WRITTEN PERMISSION.

MAGNETIC SPRING LOADED CONNECTOR, 7POS, FEMALE	ACAD REFERENCE NO.: 686A07222A01E1E		UNIT: MM
	DRAWN: J.L.	DATE: 8/12/2023	
	CHECKED: R.S.M	DATE: 8/12/2023	
	SCALE: (IN CAD 1:1)	SHEET 1 OF 1	
DRAWING NUMBER: 686A07222A01E1E			ISSUE
PART NUMBER: 686A07222A01E1E			2

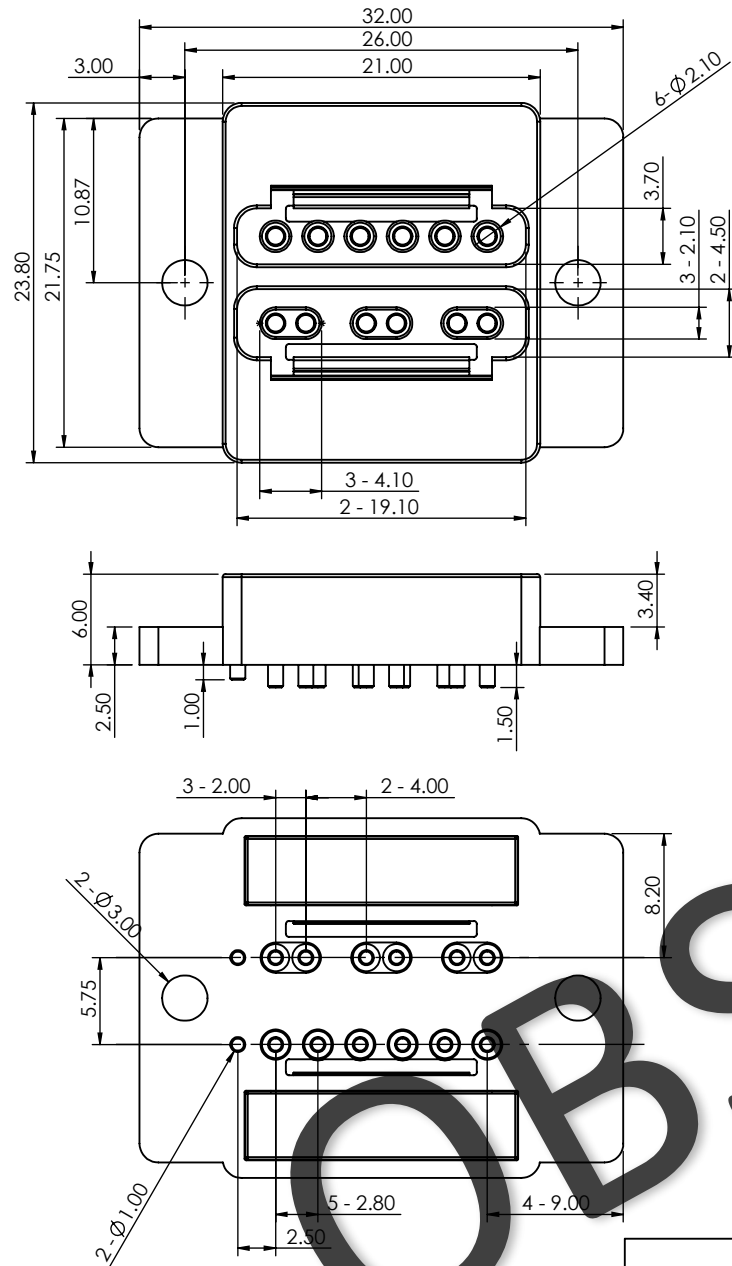


TOLERANCE UNLESS OTHERWISE SPECIFIED	
.X	±0.15
.XX	±0.10

THIS IS A C.A.D. GENERATED DRAWING  
DO NOT MAKE MANUAL REVISIONS TO MASTER.



ISSUE NUMBER	
ORIGINAL	①
ADD NOTE 4 & 5	
P.M.	AUG. 12/2023 ②



#### SPECIFICATION:

- MATERIAL:  
CONTACT: BRASS, GOLD FLASH PLATING ALL OVER NICKEL UNDERPLATING  
HOUSING: PA9T WHITE  
MAGNET: N52
- ELECTRICAL:  
RATED VOLTAGE (PER CONTACT): 250V  
RATED CURRENT (PER CONTACT): 5A
- WORKING TEMPERATURE RANGE: -30~+85° C
- RECOMMENDED SOLDERING PROCESS ARE SELECTIVE SOLDERING OR MANUAL SOLDERING. OTHER FORMS OF SOLDERING SUCH AS WAVE SOLDER OR REFLOW SOLDER ARE NOT RECOMMENDED AND CAN POTENTIALLY CAUSE DEMAGNETIZATION OF MAGNET IN THE CONNECTOR
- MATING WITH: 687A12522600301



THIS SERIES FULLY CONFORMS TO  
THE EUROPEAN UNION DIRECTIVES  
2011/65/EU FOR RoHS COMPLIANCY.



YOUR CONNECTION TO QUALITY & SERVICE

EDAC INC  
TORONTO, ONTARIO  
CANADA

THESE DRAWINGS AND SPECIFICATIONS  
ARE THE PROPERTY OF EDAC INC., AND  
SHALL NOT BE REPRODUCED, OR COPIED  
OR USED AS THE BASIS FOR THE  
MANUFACTURE OR SALE OF APPARATUS  
WITHOUT WRITTEN PERMISSION.

### MAGNETIC SPRING LOADED CONNECTOR, 14POS, FEMALE

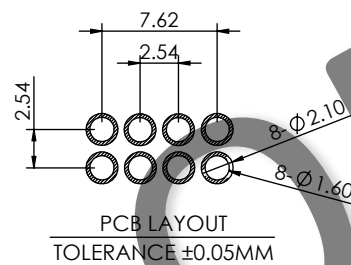
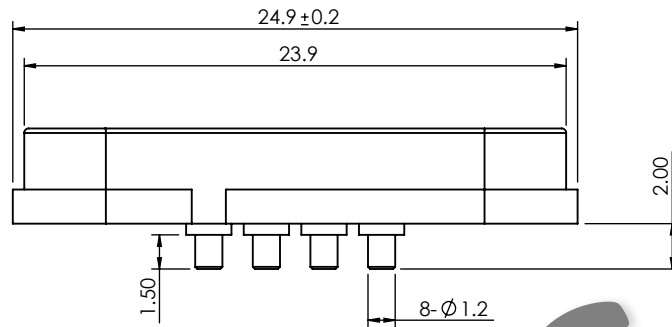
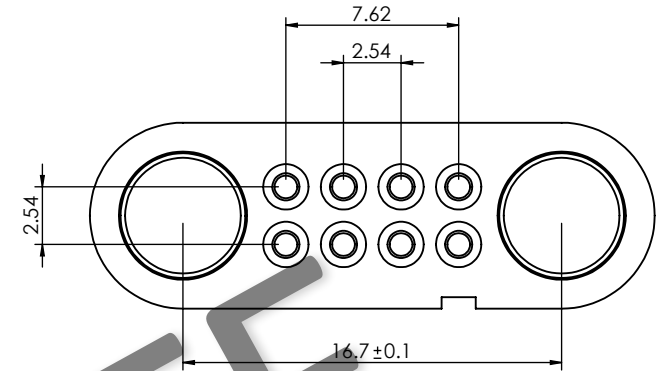
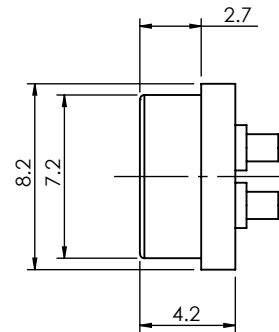
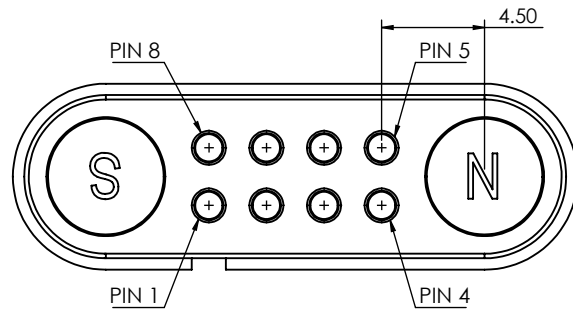
ACAD REFERENCE NO.: 686A1252260023E		UNIT: MM
DRAWN: J.L.	DATE: 8/12/2023	
CHECKED: R.S.M	DATE: 8/12/2023	
SCALE: (IN CAD 1:1)	SHEET 1 OF 1	
DRAWING NUMBER: 686A1252260023E	ISSUE	
PART NUMBER: 686A1252260023E	2	

TOLERANCE UNLESS OTHERWISE SPECIFIED	
.X	±0.15
.XX	±0.10

THIS IS A C.A.D. GENERATED DRAWING  
DO NOT MAKE MANUAL REVISIONS TO MASTER.



ISSUE NUMBER	
ORIGINAL	①
ADD NOTE 4 & 5	
P.M.	AUG. 12/2023 ②



#### SPECIFICATION:

- MATERIAL:  
CONTACT PLATING: BRASS, GOLD FLASH PLATING ALL OVER, NICKEL UNDERPLATING  
HOUSING : PA46 GREY
- ELECTRICAL:  
RATED VOLTAGE (PER CONTACT): 5V  
RATED CURRENT (PER CONTACT): 2A  
INSULATION RESISTANCE: 10MEGAOHMS MINIMUM  
DIELECTRIC WITHSTANDING VOLTAGE: 10VRMS AT 60HZ
- WORKING TEMPERATURE RANGE: -30°C~+85°C
- RECOMMENDED SOLDERING PROCESS ARE SELECTIVE SOLDERING OR MANUAL SOLDERING. OTHER FORMS OF SOLDERING SUCH AS WAVE SOLDER OR REFLOW SOLDER ARE NOT RECOMMENDED AND CAN POTENTIALLY CAUSE DEMAGNETIZATION OF MAGNET IN THE CONNECTOR

5- MATING WITH: 687B0812A512100



THIS SERIES FULLY CONFORMS TO  
THE EUROPEAN UNION DIRECTIVES  
2011/65/EU FOR RoHS COMPLIANCY.



YOUR CONNECTION TO QUALITY & SERVICE

EDAC INC  
TORONTO, ONTARIO  
CANADA

THESE DRAWINGS AND SPECIFICATIONS  
ARE THE PROPERTY OF EDAC INC., AND  
SHALL NOT BE REPRODUCED, OR COPIED  
OR USED AS THE BASIS FOR THE  
MANUFACTURE OR SALE OF APPARATUS  
WITHOUT WRITTEN PERMISSION.

### MAGNETIC SPRING LOADED CONNECTOR, 8POS, FEMALE

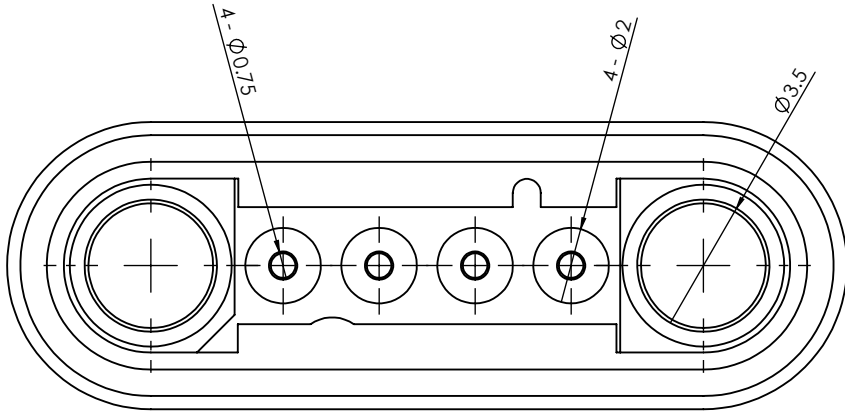
ACAD REFERENCE NO.:	686B0822250210E	UNIT: MM
DRAWN:	J.L.	DATE: 8/12/2023
CHECKED:	R.S.M	DATE: 8/12/2023
SCALE:	(IN CAD 1:1)	SHEET 1 OF 1
DRAWING NUMBER:	686B0822250210E	ISSUE 2
PART NUMBER:	686B0822250210E	

TOLERANCE UNLESS OTHERWISE SPECIFIED	
.X	±0.15
.XX	±0.10

THIS IS A C.A.D. GENERATED DRAWING  
DO NOT MAKE MANUAL REVISIONS TO MASTER.



ISSUE NUMBER	
ORIGINAL	①
ADD NOTE 4 & 5	
P.M.	AUG. 13/2023 ②



#### SPECIFICATION:

##### 1- MATERIAL:

CONTACT: BRASS GOLD FLASH PLATING ALL OVER NICKEL UNDERPLATING  
HOUSING: PA46 BLACK  
MAGNET: N52  
WATERPROOF LEVEL: 5 ATM WATERPROOF

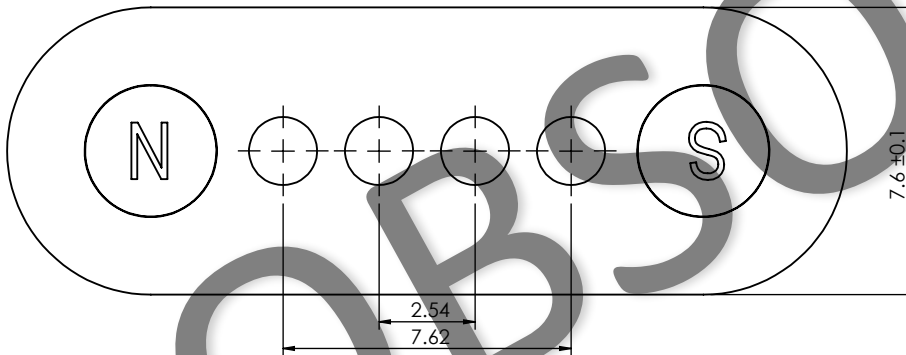
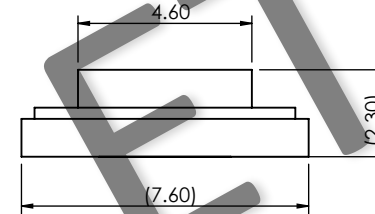
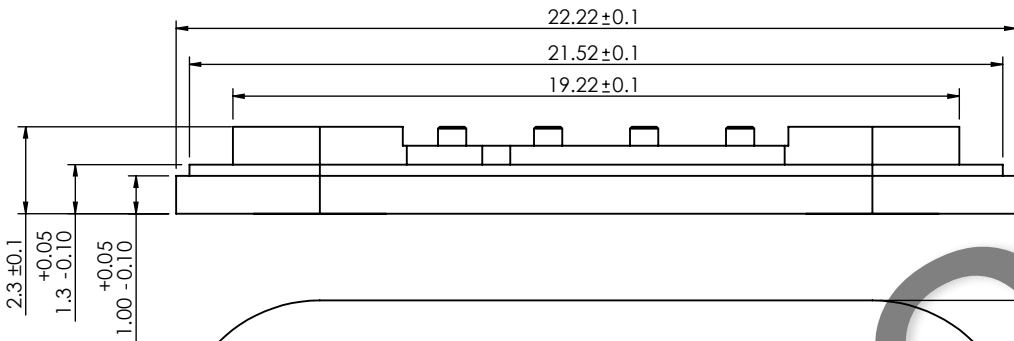
##### 2- ELECTRICAL:

RATED VOLTAGE (PER CONTACT): 5V  
RATED CURRENT (PER CONTACT): 2A  
INSULATION RESISTANCE: 100MEGAOHMS MINIMUM  
CONTACT RESISTANCE: 30mOHMS MAXIMUM BEFORE TEST AND  
60mOHMS MAXIMUM AFTER TEST AT PIN WORKING STROKE

##### 3- WORKING TEMPERATURE RANGE: -30~±85° C

4- RECOMMENDED SOLDERING PROCESS ARE SELECTIVE  
SOLDERING OR MANUAL SOLDERING. OTHER FORMS OF  
SOLDERING SUCH AS WAVE SOLDER OR REFLOW SOLDER  
ARE NOT RECOMMENDED AND CAN POTENTIALLY CAUSE  
DEMAGNETIZATION OF MAGNET IN THE CONNECTOR

##### 5- MATING WITH: 687E0421A510208



THIS SERIES FULLY CONFORMS TO  
THE EUROPEAN UNION DIRECTIVES  
2011/65/EU FOR RoHS COMPLIANCY.



YOUR CONNECTION TO QUALITY & SERVICE

EDAC INC  
TORONTO, ONTARIO  
CANADA

THESE DRAWINGS AND SPECIFICATIONS  
ARE THE PROPERTY OF EDAC INC., AND  
SHALL NOT BE REPRODUCED, OR COPIED  
OR USED AS THE BASIS FOR THE  
MANUFACTURE OR SALE OF APPARATUS  
WITHOUT WRITTEN PERMISSION.

#### MAGNETIC SPRING LOADED CONNECTOR, 4POS, FEMALE

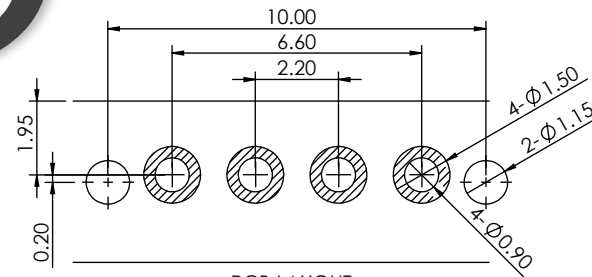
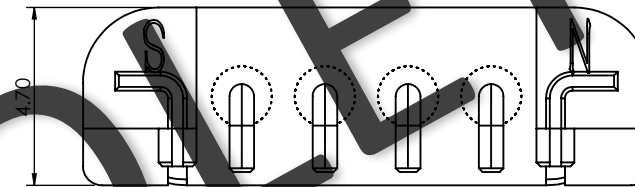
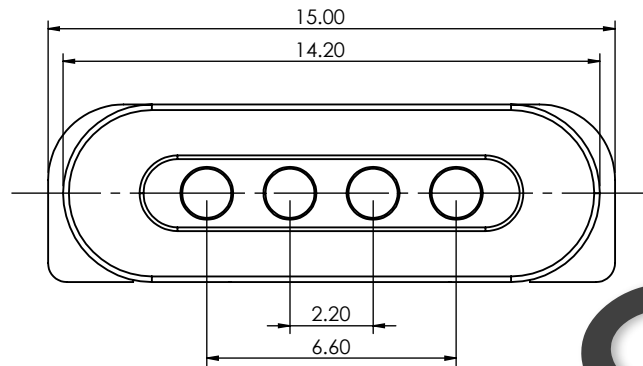
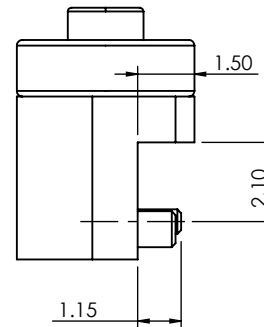
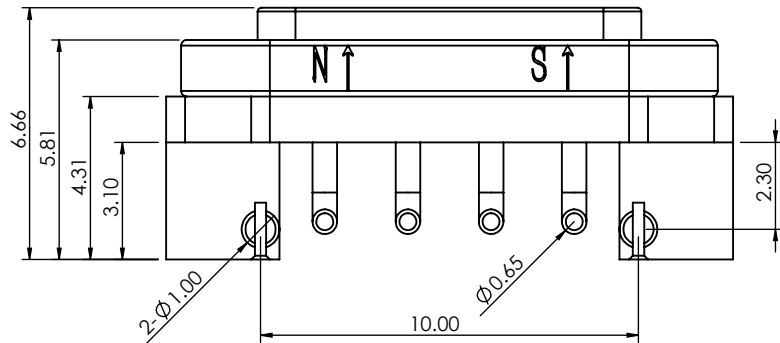
ACAD REFERENCE NO.:	686E0423250110E	UNIT: MM
DRAWN:	J.L.	DATE: 8/13/2023
CHECKED:	R.S.M	DATE: 8/13/2023
SCALE:	(IN CAD 1:1)	SHEET 1 OF 1
DRAWING NUMBER:	686E0423250110E	ISSUE 2
PART NUMBER:	686E0423250110E	

TOLERANCE UNLESS OTHERWISE SPECIFIED	
.X	±0.15
.XX	±0.10

THIS IS A C.A.D. GENERATED DRAWING  
DO NOT MAKE MANUAL REVISIONS TO MASTER.



ISSUE NUMBER	
ORIGINAL	①
ADD NOTE 4 & 5	
P.M.	AUG. 13/2023 ②



PCB LAYOUT

SPECIFICATION:

1- MATERIAL:

CONTACT: BRASS, GOLD FLASH PLATING ALL OVER NICKEL UNDERPLATING  
HOUSING : PA9T, BLACK  
MAGNET : N52

2- ELECTRICAL:

RATED VOLTAGE (PER CONTACT): 5V

RATED CURRENT (PER CONTACT): 3A

3- WORKING TEMPERATURE RANGE: -30~+85°C.

4- RECOMMENDED SOLDERING PROCESS ARE SELECTIVE SOLDERING OR MANUAL SOLDERING. OTHER FORMS OF SOLDERING SUCH AS WAVE SOLDER OR REFLOW SOLDER ARE NOT RECOMMENDED AND CAN POTENTIALLY CAUSE DEMAGNETIZATION OF MAGNET IN THE CONNECTOR

5- MATING WITH: 686F0422350125E OR 687F0432050110B



THIS SERIES FULLY CONFORMS TO  
THE EUROPEAN UNION DIRECTIVES  
2011/65/EU FOR RoHS COMPLIANCY.



YOUR CONNECTION TO QUALITY & SERVICE

EDAC INC  
TORONTO, ONTARIO  
CANADA

THESE DRAWINGS AND SPECIFICATIONS  
ARE THE PROPERTY OF EDAC INC., AND  
SHALL NOT BE REPRODUCED, OR COPIED  
OR USED AS THE BASIS FOR THE  
MANUFACTURE OR SALE OF APPARATUS  
WITHOUT WRITTEN PERMISSION.

MAGNETIC SPRING LOADED CONNECTOR,  
4POS, FEMALE

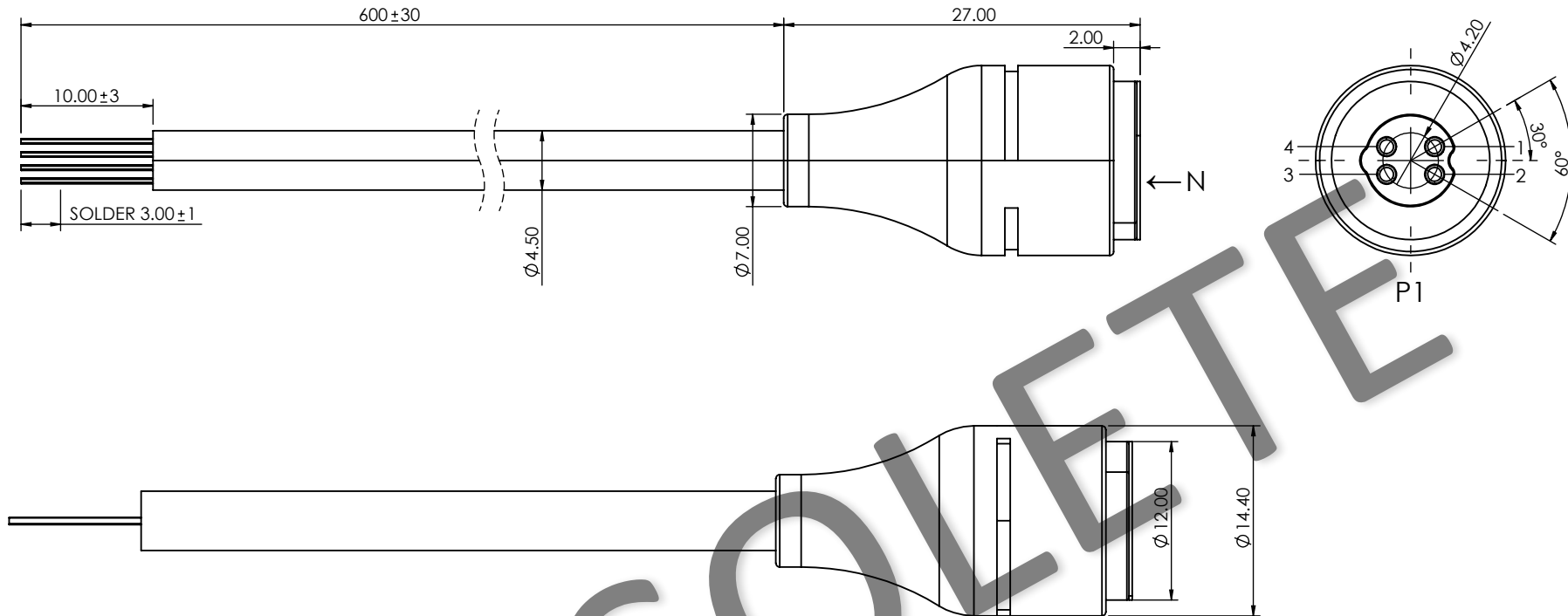
ACAD REFERENCE NO.: 686F0432350125E		UNIT: MM
DRAWN: J.L.	DATE: 8/13/2023	
CHECKED: R.S.M	DATE: 8/13/2023	
SCALE: (IN CAD 1:1)	SHEET 1 OF 1	
DRAWING NUMBER: 686F0432350125E	ISSUE	
PART NUMBER: 686F0432350125E	2	

TOLERANCE UNLESS OTHERWISE SPECIFIED	
.X	±0.15
.XX	±0.10

THIS IS A C.A.D. GENERATED DRAWING  
DO NOT MAKE MANUAL REVISIONS TO MASTER.



ISSUE NUMBER	
ORIGINAL	①
ADD NOTE 5	
P.M.	AUG. 11/2023 ②



# SPECIFICATION:

## 1- ELECTRICAL:

RATED VOLTAGE (PER CONTACT): 5V  
RATED CURRENT (PER CONTACT): 2A  
INSULATION RESISTANCE: 100MEGAOHMS MINIMUM  
DIELECTRIC WITHSTANDING VOLTAGE: 100V AT 60HZ  
CONTACT RESISTANCE: 30mOHMS MAXIMUM BEFORE TEST AND 60mOHMS MAXIMUM AFTER TEST AT POGO PIN WORKING STROKE

## 2- RECOMMENDED WORKING STROKE & FORCE:

STROKE 1.1mm (PER CONTACT): 80gf ± 20 gf

## 3- MECHANICAL LIFE: 10,000 CYCLES MIN.

## 4- WORKING TEMPERATURE RANGE: -30~+85°C

## 5- MATING WITH: 688A04210A01E06



THIS SERIES FULLY CONFORMS TO  
THE EUROPEAN UNION DIRECTIVES  
2011/65/EU FOR RoHS COMPLIANCY.

## MAGNETIC SPRING LOADED CONNECTOR, 4POS, MALE



YOUR CONNECTION TO QUALITY & SERVICE

EDAC INC  
TORONTO, ONTARIO  
CANADA

THESE DRAWINGS AND SPECIFICATIONS  
ARE THE PROPERTY OF EDAC INC., AND  
SHALL NOT BE REPRODUCED, OR COPIED  
OR USED AS THE BASIS FOR THE  
MANUFACTURE OR SALE OF APPARATUS  
WITHOUT WRITTEN PERMISSION.

ACAD REFERENCE NO.: 687A04210A01E06		UNIT: MM
DRAWN: J.L.	DATE: 8/11/2023	
CHECKED: R.S.M	DATE: 8/11/2023	
SCALE: (IN CAD 1:1)	SHEET 1 OF 1	
DRAWING NUMBER: 687A04210A01E06	ISSUE	
PART NUMBER: 687A04210A01E06	2	

THIS IS A C.A.D. GENERATED DRAWING  
DO NOT MAKE MANUAL REVISIONS TO MASTER.



Technical drawing of the ETEC 1000 cable assembly, showing dimensions and pin configurations.

**Dimensions:**

- Overall length:  $164.40$
- Distance between connectors:  $80 \pm 20$
- Distance from connector to end:  $2 - 42.20$
- Distance from connector to end (alternative):  $2 - 27.20$
- Distance from connector to end (alternative):  $2 - 23.80$
- Distance from connector to end (alternative):  $2 - 20.20$
- Distance from connector to end (alternative):  $2 - 17.20$
- Distance from connector to end (alternative):  $2 - 13.20$
- Distance from connector to end (alternative):  $2 - 5.75$
- Distance from connector to end (alternative):  $2 - 2.80$
- Distance from connector to end (alternative):  $2 - 2.00$
- Distance from connector to end (alternative):  $2 - 1.00$
- Distance from connector to end (alternative):  $2 - 0.20$
- Distance from connector to end (alternative):  $2 - 0.10$
- Distance from connector to end (alternative):  $2 - 0.05$
- Distance from connector to end (alternative):  $2 - 0.02$
- Distance from connector to end (alternative):  $2 - 0.01$
- Distance from connector to end (alternative):  $2 - 0.00$

**Pin Configurations:**

- Pin 1:** 1, 2, 3, 4, 5, 6, 7, 8, 9
- Pin 2:** 1, 2, 3, 4, 5, 6, 7, 8, 9
- Pin 3:** 1, 2, 3, 4, 5, 6, 7, 8, 9
- Pin 4:** 1, 2, 3, 4, 5, 6, 7, 8, 9
- Pin 5:** 1, 2, 3, 4, 5, 6, 7, 8, 9
- Pin 6:** 1, 2, 3, 4, 5, 6, 7, 8, 9
- Pin 7:** 1, 2, 3, 4, 5, 6, 7, 8, 9
- Pin 8:** 1, 2, 3, 4, 5, 6, 7, 8, 9
- Pin 9:** 1, 2, 3, 4, 5, 6, 7, 8, 9

**Other Dimensions:**

- Distance from connector to end:  $2 - 21.00$
- Distance from connector to end:  $4 - 19.00$
- Distance from connector to end:  $2 - 26.00$
- Distance from connector to end:  $2 - 9.75$
- Distance from connector to end:  $2 - 3.60$
- Distance from connector to end:  $2 - 4.40$
- Distance from connector to end:  $2 - 2.50$
- Distance from connector to end:  $2 - 2.20$
- Distance from connector to end:  $2 - 2.00$
- Distance from connector to end:  $2 - 1.80$
- Distance from connector to end:  $2 - 1.60$
- Distance from connector to end:  $2 - 1.40$
- Distance from connector to end:  $2 - 1.20$
- Distance from connector to end:  $2 - 1.00$
- Distance from connector to end:  $2 - 0.80$
- Distance from connector to end:  $2 - 0.60$
- Distance from connector to end:  $2 - 0.40$
- Distance from connector to end:  $2 - 0.20$
- Distance from connector to end:  $2 - 0.10$
- Distance from connector to end:  $2 - 0.05$
- Distance from connector to end:  $2 - 0.02$
- Distance from connector to end:  $2 - 0.01$
- Distance from connector to end:  $2 - 0.00$

<u>P1</u>		<u>P2</u>
1	<u>RED</u>	1
2	<u>BLACK</u>	2
3	<u>WHITE</u>	3
4	<u>RED</u>	4
5	<u>BLACK</u>	5
6	<u>BLUE</u>	6
7	<u>GREEN</u>	7
8	<u>YELLOW</u>	8
9	<u>WHITE</u>	9

8- MATING WITH: 686A1252260023E



THIS SERIES FULLY CONFORMS TO  
THE EUROPEAN UNION DIRECTIVES  
2011/65/EU FOR RoHS COMPLIANCY.



**EDAC** EDAC INC  
TORONTO, ONTARIO  
CANADA  
YOUR CONNECTION TO QUALITY & SERVICE

THESE DRAWINGS AND SPECIFICATIONS  
ARE THE PROPERTY OF EDAC INC.,AND  
SHALL NOT BE REPRODUCED,OR COPIED  
OR USED AS THE BASIS FOR THE  
MANUFACTURE OR SALE OF APPARATUS  
WITHOUT WRITTEN PERMISSION.

TOLERANCE UNLESS OTHERWISE SPECIFIED	
.X	±0.15
.XX	±0.10

THIS IS A C.A.D. GENERATED DRAWING  
DO NOT MAKE MANUAL REVISIONS TO MASTER.

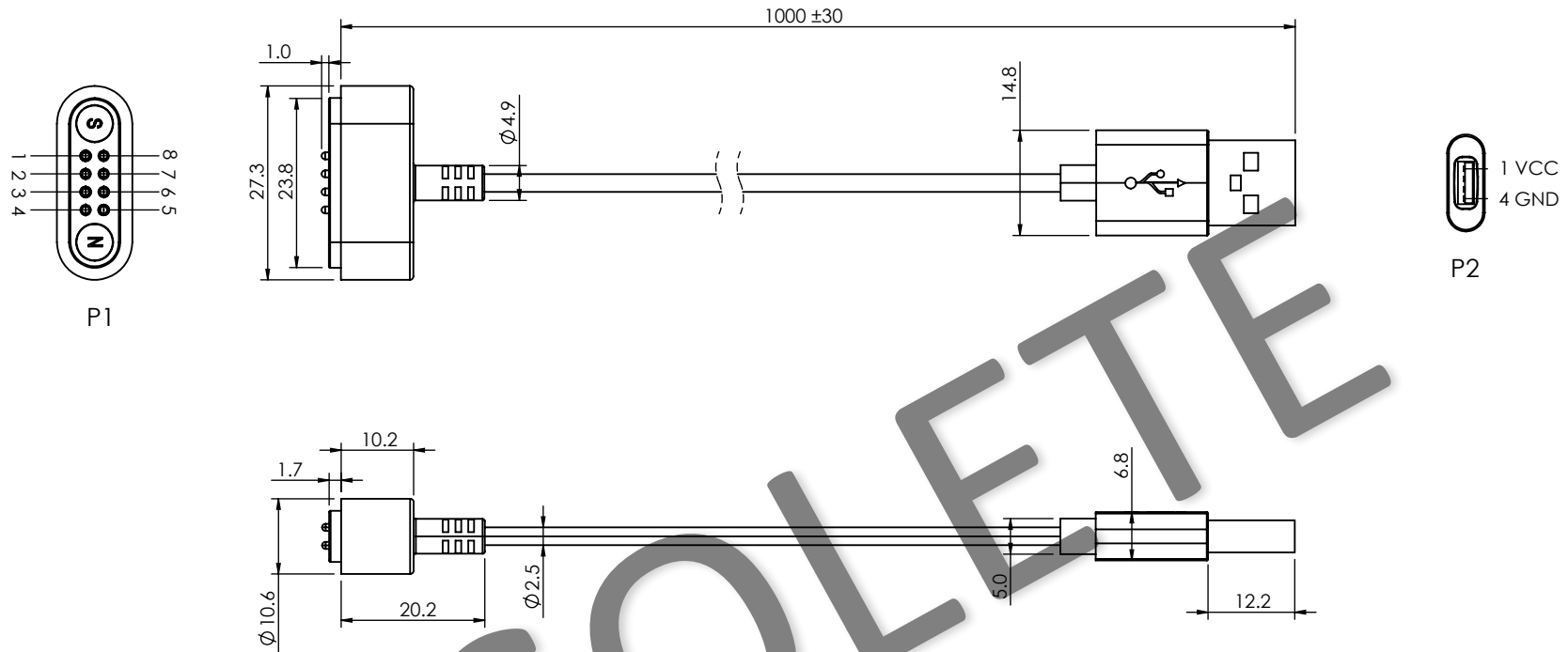


ISSUE NUMBER

ORIGINAL ①

ADD NOTE 8

P.M. AUG. 12/2023 ②



**SPECIFICATION:**

- 1- MATERIAL:  
CONTACT: BRASS, GOLD FLASH PLATING ALL OVER NICKEL UNDERPLATING  
HOUSING : PA46, WHITE  
MAGNET : N52  
CABLE: TPE, GREY, OD: 2.5±0.10
- 2- ELECTRICAL:  
VOLTAGE RATING (PER CONTACT): 5V  
CURRENT RATING (PER CONTACT): 1A  
INSULATION RESISTANCE: 300V/DC 10MEGAOHMS (MIN.)  
ON-RESISTANCE: 30HMS MAXIMUM  
100% BREAK/SHORT TEST
- 3- SWING TEST: LIFTING WEIGHT 200g, ±60 DEGREES, 30 TIMES/MIN, 2000 TIMES CONDUCTION OK.
- 4- SALT SPRAY TEST: 5% SALT SPRAY CONCENTRATION, TEMPERATURE 35°C, TEST TIME 48 HOURS, NO CORROSION.
- 5- WORKING STROKE & FORCE: PRESS STROKE 1.0mm (PER CONTACT) 50gf MAX.
- 6- LIFE TEST: PRESS STROKE 0.8mm, 10,000 CYCLES MIN.
- 7- OPERATING TEMPERATURE RANGE: -30°C~+85°C.

8- MATING WITH: 686B0822250210E

**WIRING TABLE**

P1	P2
7 — RED	1 VCC
2 — BLACK	4 GND



THIS SERIES FULLY CONFORMS TO  
THE EUROPEAN UNION DIRECTIVES  
2011/65/EU FOR ROHS COMPLIANCY.



YOUR CONNECTION TO QUALITY & SERVICE

EDAC INC  
TORONTO, ONTARIO  
CANADA

THESE DRAWINGS AND SPECIFICATIONS  
ARE THE PROPERTY OF EDAC INC., AND  
SHALL NOT BE REPRODUCED, OR COPIED  
OR USED AS THE BASIS FOR THE  
MANUFACTURE OR SALE OF APPARATUS  
WITHOUT WRITTEN PERMISSION.

**MAGNETIC SPRING LOADED CONNECTOR TO  
USB-A CABLE ASSEMBLY, 8POS, MALE**

ACAD REFERENCE NO.: 687B0812A512100 UNIT: MM

DRAWN: J.L. DATE: 8/12/2023

CHECKED: R.S.M. DATE: 8/12/2023

SCALE: (IN CAD 1:1) SHEET 1 OF 1

DRAWING NUMBER: 687B0812A512100 ISSUE

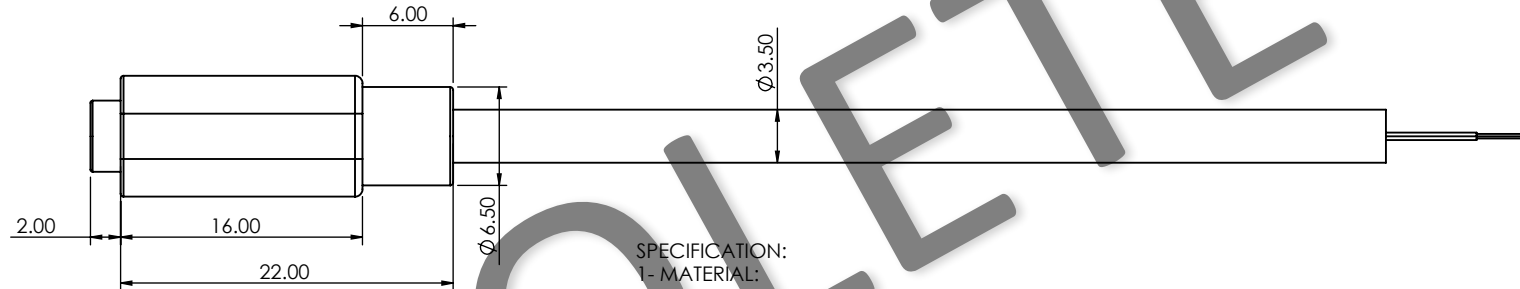
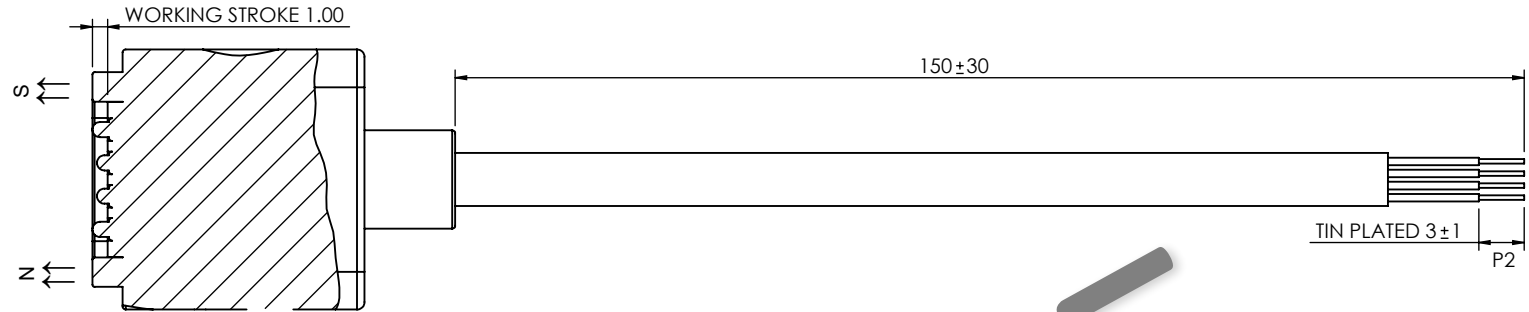
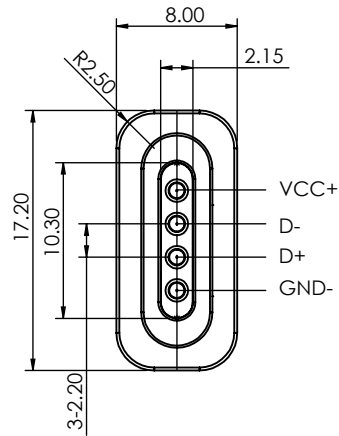
PART NUMBER: 687B0812A512100 2

TOLERANCE UNLESS OTHERWISE SPECIFIED	
.X	±0.15
.XX	±0.10

THIS IS A C.A.D. GENERATED DRAWING  
DO NOT MAKE MANUAL REVISIONS TO MASTER.



ISSUE NUMBER	
ORIGINAL	①
ADD NOTE 7	
P.M.	AUG. 13/2023 ②



#### CONNECT DIAGRAM

P1		P2
1	RED	VCC+
2	WHITE	D+
3	GREEN	D-
4	BLACK	GND-

#### SPECIFICATION:

##### 1- MATERIAL:

CONTACT: BRASS, GOLD FLASH PLATING ALL OVER NICKEL UNDERPLATING  
HOUSING: TPE 90  
CABLE: TPE, BLACK  
SHELL: ABS

##### 2- ELECTRICAL:

VOLTAGE RATING: 5V  
CURRENT RATING: 3A  
INSULATION RESISTANCE: 300V/DC 10MEGAOHMS MIN.  
ON-RESISTANCE: 0.3 OHMS MAX.  
100% BREAK/SHORT TEST

##### 3- SWING TEST: 200g LIFTING WEIGHT, ±60 DEGREES 30 TIMES/MIN, 2000 TIMES CONDUCTION OK

##### 4- WORKING ELASTIC SINGLE PIN: PRESS STROKE 0.8mm (PER CONTACT) 80gf MAX.

##### 5- LIFE TEST: PRESS STROKE 0.8mm, 10,000 CYCLES MIN.

##### 6- OPERATING TEMPERATURE RANGE: -30~+85°C.

##### 7- MATING WITH: 686F0432350125E



THIS SERIES FULLY CONFORMS TO  
THE EUROPEAN UNION DIRECTIVES  
2011/65/EU FOR RoHS COMPLIANCY.



YOUR CONNECTION TO QUALITY & SERVICE

EDAC INC  
TORONTO, ONTARIO  
CANADA

THESE DRAWINGS AND SPECIFICATIONS  
ARE THE PROPERTY OF EDAC INC., AND  
SHALL NOT BE REPRODUCED, OR COPIED  
OR USED AS THE BASIS FOR THE  
MANUFACTURE OR SALE OF APPARATUS  
WITHOUT WRITTEN PERMISSION.

### MAGNETIC SPRING LOADED CONNECTOR, 4POS, MALE

ACAD REFERENCE NO.: 687F0432050110B		UNIT: MM
DRAWN: J.L.	DATE: 8/13/2023	
CHECKED: R.S.M	DATE: 8/13/2023	
SCALE: (IN CAD 1:1)	SHEET 1 OF 1	
DRAWING NUMBER: 687F0432050110B	ISSUE	
PART NUMBER: 687F0432050110B	2	

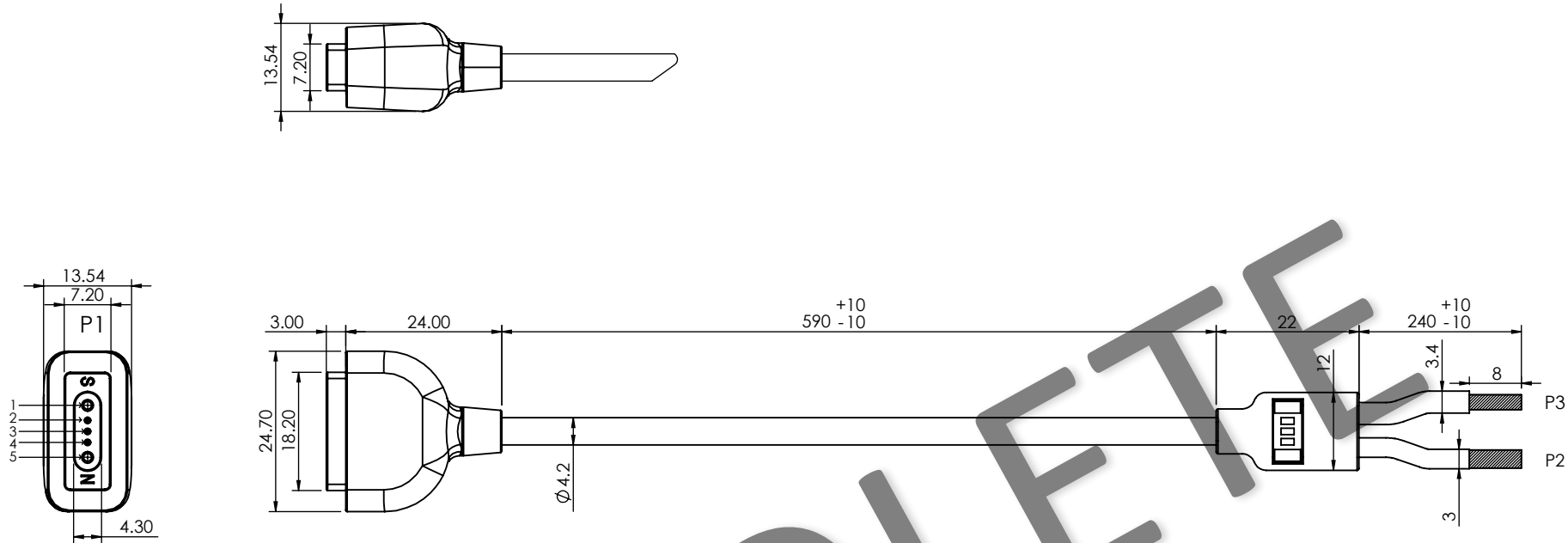


TOLERANCE UNLESS OTHERWISE SPECIFIED	
.X	±0.15
.XX	±0.10

THIS IS A C.A.D. GENERATED DRAWING  
DO NOT MAKE MANUAL REVISIONS TO MASTER.



ISSUE NUMBER	
ORIGINAL	①
ADD NOTE 7	
P.M.	AUG. 13/2023 ②



#### SPECIFICATION:

- 1- MATERIAL:  
CONTACT: BRASS GOLD FLASH PLATING ALL OVER NICKEL UNDERPLATING  
HOUSING : TPE 90, BLACK  
MAGNET: N52
- 2- ELECTRICAL:  
RATED VOLTAGE (PER CONTACT): 24V  
RATED CURRENT (PER CONTACT): 5A  
100% BREAK/SHORT TEST  
ON-RESISTANCE: 2 OHMS (MAX).  
INSULATION RESISTANCE: 300V/DC 10 MEGAOHMS (MIN).
- 3- CONTACT RESISTANCE: 30mOHMS MAXIMUM BEFORE TEST
- 4- RECOMMENDED WORKING STROKE & FORCE: STROKE 1.2MM (PER CONTACT): 80gfMAX.
- 5- MECHANICAL LIFE: STROKE: 1.2MM, 10,000 CYCLE MIN.
- 6- WORKING TEMPERATURE RANGE: -30°C~+85°C
- 7- MATING WITH: 686K0551210113E

#### WIRING TABLE

P1	PCB	P2	P3
1 20AWG RED	1 VCC 24V		1 VCC 24V 20AWG RED
2 28AWG WHITE	2 D-	1 28AWG WHITE	
3 24AWG BLUE	3 VCC 5V	2 24AWG RED	
4 28AWG GREEN	4 D+	3 28AWG GREEN	
5 20AWG BLACK	5 GND	4 24AWG BLACK	2 GND 20AWG BLACK



THIS SERIES FULLY CONFORMS TO  
THE EUROPEAN UNION DIRECTIVES  
2011/65/EU FOR RoHS COMPLIANCY.



YOUR CONNECTION TO QUALITY & SERVICE

EDAC INC  
TORONTO, ONTARIO  
CANADA

THESE DRAWINGS AND SPECIFICATIONS  
ARE THE PROPERTY OF EDAC INC., AND  
SHALL NOT BE REPRODUCED, OR COPIED  
OR USED AS THE BASIS FOR THE  
MANUFACTURE OR SALE OF APPARATUS  
WITHOUT WRITTEN PERMISSION.

#### MAGNETIC SPRING LOADED CONNECTOR, 5POS, MALE

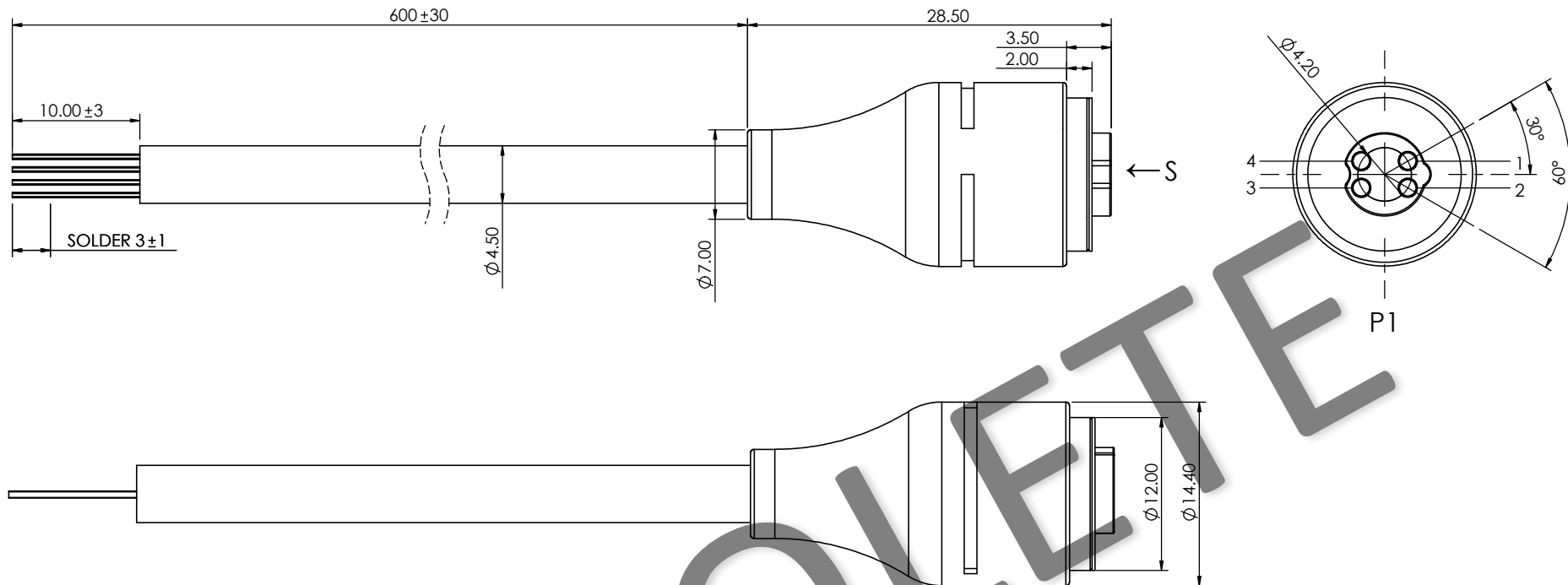
ACAD REFERENCE NO.:	687K05510501138	UNIT: MM
DRAWN:	J.L.	DATE: 8/13/2023
CHECKED:	R.S.M	DATE: 8/13/2023
SCALE:	(IN CAD 1:1)	SHEET 1 OF 1
DRAWING NUMBER:	687K05510501138	ISSUE
PART NUMBER:	687K05510501138	2

TOLERANCE UNLESS OTHERWISE SPECIFIED	
.X	±0.15
.XX	±0.10

THIS IS A C.A.D. GENERATED DRAWING  
DO NOT MAKE MANUAL REVISIONS TO MASTER.



ISSUE NUMBER	
ORIGINAL	①



#### SPECIFICATION:

##### ELECTRICAL:

RATED VOLTAGE (PER CONTACT): 5V  
 RATED CURRENT (PER CONTACT): 2A  
 INSULATION RESISTANCE: 100MEGAOHMS MINIMUM  
 DIELECTRIC WITHSTANDING VOLTAGE: 100V AT 60HZ  
 CONTACT RESISTANCE: 30mOHMS MAXIMUM BEFORE TEST AND 60mOHMS MAXIMUM AFTER TEST AT POGO PIN WORKING STROKE

##### RECOMMENDED WORKING STROKE & FORCE:

STROKE 1.1mm (PER CONTACT): 80gf±20gf  
 MECHANICAL LIFE: 10,000 CYCLES MIN.  
 WORKING TEMPERATURE RANGE: -30~+85°C

### MAGNETIC SPRING LOADED CONNECTOR, 4POS, FEMALE



EDAC INC  
TORONTO, ONTARIO  
CANADA

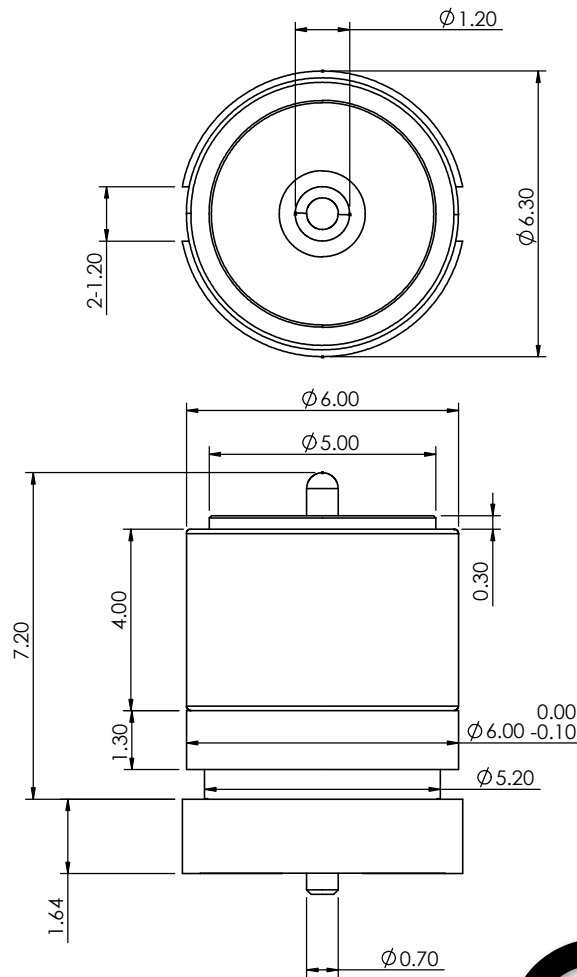
YOUR CONNECTION TO QUALITY & SERVICE

THESE DRAWINGS AND SPECIFICATIONS  
ARE THE PROPERTY OF EDAC INC., AND  
SHALL NOT BE REPRODUCED, OR COPIED  
OR USED AS THE BASIS FOR THE  
MANUFACTURE OR SALE OF APPARATUS  
WITHOUT WRITTEN PERMISSION.

ACAD REFERENCE NO.: 688A04210A01E06		UNIT: MM
DRAWN: J.L.	DATE: 4/27/2023	
CHECKED: R.S.M	DATE: 4/27/2023	
SCALE: (IN CAD 1:1)	SHEET 1 OF 1	
DRAWING NUMBER: 688A04210A01E06	ISSUE	
PART NUMBER: 688A04210A01E06	1	



THIS SERIES FULLY CONFORMS TO  
THE EUROPEAN UNION DIRECTIVES  
2011/65/EU FOR RoHS COMPLIANCY.



TOLERANCE UNLESS OTHERWISE SPECIFIED	
.X	±0.15
.XX	±0.10

THIS IS A C.A.D. GENERATED DRAWING  
DO NOT MAKE MANUAL REVISIONS TO MASTER.



ISSUE NUMBER	
ORIGINAL	1
ADD NOTE 4 & 5	
P.M.	AUG. 12/2023 2

#### SPECIFICATION:

- 1- MATERIAL:  
CONTACT: BRASS, GOLD FLASH PLATING ALL OVER NICKEL UNDERPLATING  
HOUSING: PA9T, BLACK  
MAGNET: N52
- 2- ELECTRICAL:  
RATED VOLTAGE (PER CONTACT): 5V  
RATED CURRENT (PER CONTACT): 1A
- 3- WORKING TEMPERATURE RANGE: -30~+85°C.

4- RECOMMENDED SOLDERING PROCESS ARE SELECTIVE SOLDERING OR MANUAL SOLDERING. OTHER FORMS OF SOLDERING SUCH AS WAVE SOLDER OR REFLOW SOLDER ARE NOT RECOMMENDED AND CAN POTENTIALLY CAUSE DEMAGNETIZATION OF MAGNET IN THE CONNECTOR.

5- MATING WITH: 686B02222030B1, 686B02122001

PCB LAYOUT  
LAYOUT TOLERANCE: ±0.05MM

**OBSOLETE**



THIS SERIES FULLY CONFORMS TO  
THE EUROPEAN UNION DIRECTIVES  
2011/65/EU FOR RoHS COMPLIANCY.



EDAC INC  
TORONTO, ONTARIO  
CANADA  
YOUR CONNECTION TO QUALITY & SERVICE

THESE DRAWINGS AND SPECIFICATIONS  
ARE THE PROPERTY OF EDAC INC., AND  
SHALL NOT BE REPRODUCED, OR COPIED  
OR USED AS THE BASIS FOR THE  
MANUFACTURE OR SALE OF APPARATUS  
WITHOUT WRITTEN PERMISSION.

ACAD REFERENCE NO.: 685B0212P011B0E		UNIT: MM
DRAWN: J.L.	DATE: 8/15/2023	
CHECKED: R.S.M	DATE: 8/15/2023	
SCALE: (IN CAD 1:1)	SHEET 1 OF 1	
DRAWING NUMBER: 685B0212P011B0E		ISSUE  2
PART NUMBER: 685B0212P011B0E		

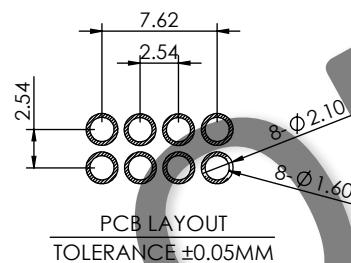
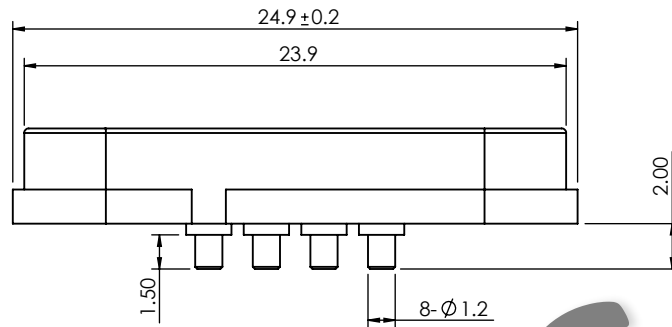
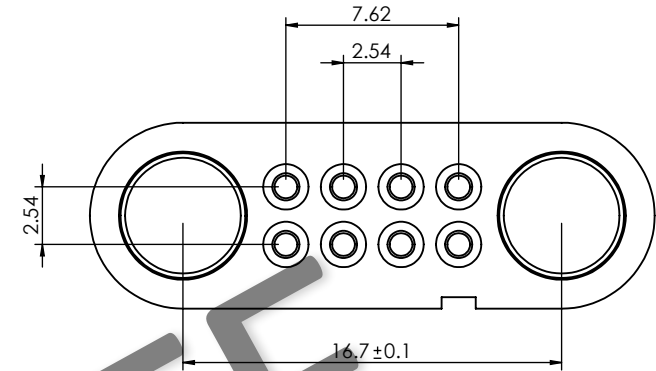
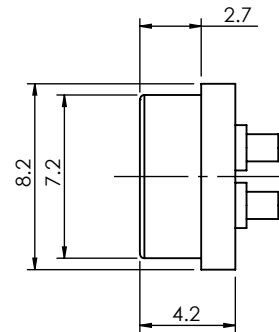
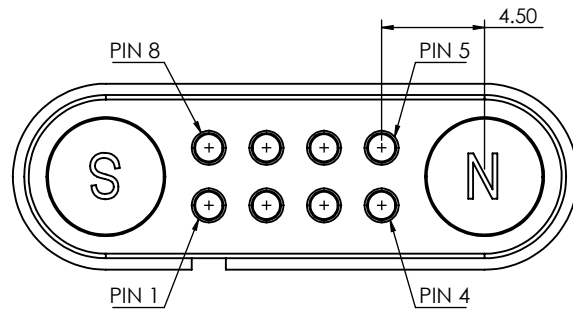
MAGNETIC SPRING LOADED CONNECTOR,  
1POS, MALE

TOLERANCE UNLESS OTHERWISE SPECIFIED	
.X	±0.15
.XX	±0.10

THIS IS A C.A.D. GENERATED DRAWING  
DO NOT MAKE MANUAL REVISIONS TO MASTER.



ISSUE NUMBER	
ORIGINAL	①
ADD NOTE 4 & 5	
P.M.	AUG. 12/2023 ②



#### SPECIFICATION:

- MATERIAL:  
CONTACT PLATING: BRASS, GOLD FLASH PLATING ALL OVER, NICKEL UNDERPLATING  
HOUSING : PA46 GREY
- ELECTRICAL:  
RATED VOLTAGE (PER CONTACT): 5V  
RATED CURRENT (PER CONTACT): 2A  
INSULATION RESISTANCE: 10MEGAOHMS MINIMUM  
DIELECTRIC WITHSTANDING VOLTAGE: 10VRMS AT 60HZ
- WORKING TEMPERATURE RANGE: -30°C~+85°C
- RECOMMENDED SOLDERING PROCESS ARE SELECTIVE SOLDERING OR MANUAL SOLDERING. OTHER FORMS OF SOLDERING SUCH AS WAVE SOLDER OR REFLOW SOLDER ARE NOT RECOMMENDED AND CAN POTENTIALLY CAUSE DEMAGNETIZATION OF MAGNET IN THE CONNECTOR

5- MATING WITH: 687B0812A512100



THIS SERIES FULLY CONFORMS TO  
THE EUROPEAN UNION DIRECTIVES  
2011/65/EU FOR RoHS COMPLIANCY.



YOUR CONNECTION TO QUALITY & SERVICE

EDAC INC  
TORONTO, ONTARIO  
CANADA

THESE DRAWINGS AND SPECIFICATIONS  
ARE THE PROPERTY OF EDAC INC., AND  
SHALL NOT BE REPRODUCED, OR COPIED  
OR USED AS THE BASIS FOR THE  
MANUFACTURE OR SALE OF APPARATUS  
WITHOUT WRITTEN PERMISSION.

### MAGNETIC SPRING LOADED CONNECTOR, 8POS, FEMALE

ACAD REFERENCE NO.: 686B0822250210E		UNIT: MM
DRAWN: J.L.	DATE: 8/12/2023	
CHECKED: R.S.M	DATE: 8/12/2023	
SCALE: (IN CAD 1:1)	SHEET 1 OF 1	
DRAWING NUMBER: 686B0822250210E	ISSUE	
PART NUMBER: 686B0822250210E	2	