



161 Alden Road, Units 7 & 8, Markham, Ontario Canada L3R 3W7
 Tel: +1 416 754-3322 Fax: +1 416-754-3299
 Email: support@edac.net http://www.edac.net
ENGINEERING CHANGE NOTICE

| | | | |
|----------------|--------------------|-----------------|-----------------|
| Originator: | Wenyu Qin | Date: | Document Number |
| Phone No. | 416-754-3322 | March 23, 2026 | ECN20260323-00 |
| Email Address: | wqin@edacgroup.net | Revision Number | SHEET |
| Department | Quality | 1 | 3 |

CHANGE TYPE:

- CLASS I Customer notification and approval required prior to implementation
- CLASS II Customer notification only, no approval required
- CLASS III No customer notification required

REASON OF CHANGE

End-of-Life (EOL) of 408-240-328N and Specification Update for 408-240-328

DESCRIPTION OF CHANGE:

This change is intended to:
 1. Obsolete 408-240-328N, as it is a redundant part number with identical application to 408-240-328.
 2. Update 408-240-328 to Nylon natural color.
 There is no impact on Fit, Form, and Function.

For detailed change information, please refer to Page 2.

IMPLEMENTATION: 3/23/2026

PARTIES AFFECTED

- Customer
- Distributors
- Suppliers
- NORCOMP
- MH
- ETW
- ECA
- EDG
- EDAC UK

KEY TARGET DUE DATES IF CHANGE IS APPROVED TO PROCEED (check if applicable and show target dates as known)

- Submit Quote _____
- Prod. Trial Run _____
- Run at Rate _____
- PPAP from Supplier _____
- MRD of Production Parts _____
- UL / CSA / RoHS / REACH _____

ACKNOWLEDGEMENT FOR ECN INITIATION: (OPTIONALS)

- Tooling Rep _____
- Mfg Eng Rep _____
- Production Rep _____
- Materials Rep _____
- Quality Rep Wenyu Qin
- Marketing Rep Marco Lamanna
- Facilities Rep _____
- Sales Rep. Esther Marothy
- Product Eng. Rep. _____
- Purchasing Rep _____

STATUS

APPROVED

CCS CHANGE REQUEST #

APPROVALS FOR ECN INITIATION (REQUIRED)

- General Manager**
Bob Sakitkovski
- Engineering Manager**
Ronnie Sta Monica
- Business Development Manager**
Kobie Samuels *K.S. 3-25-26*
- Quality Engineer**
Wenyu Qin
- Engineer**
Vinesh Kamanis

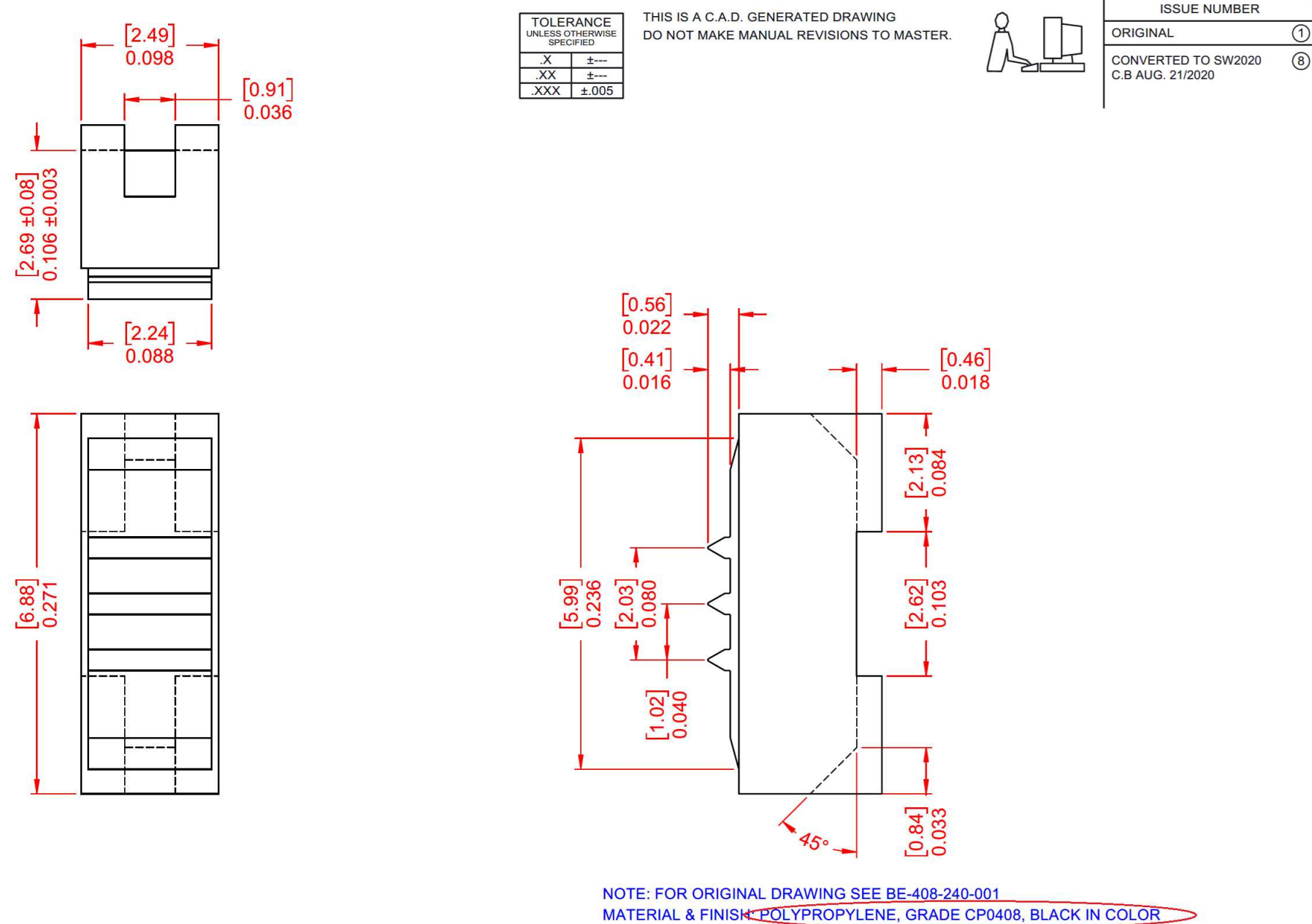
REJECTED

Change REJECTED by:

Rejected Date:

R8

R9



| TOLERANCE UNLESS OTHERWISE SPECIFIED | |
|--------------------------------------|-------|
| X | ± |
| XX | ± |
| XXX | ±.005 |

THIS IS A C.A.D. GENERATED DRAWING DO NOT MAKE MANUAL REVISIONS TO MASTER.

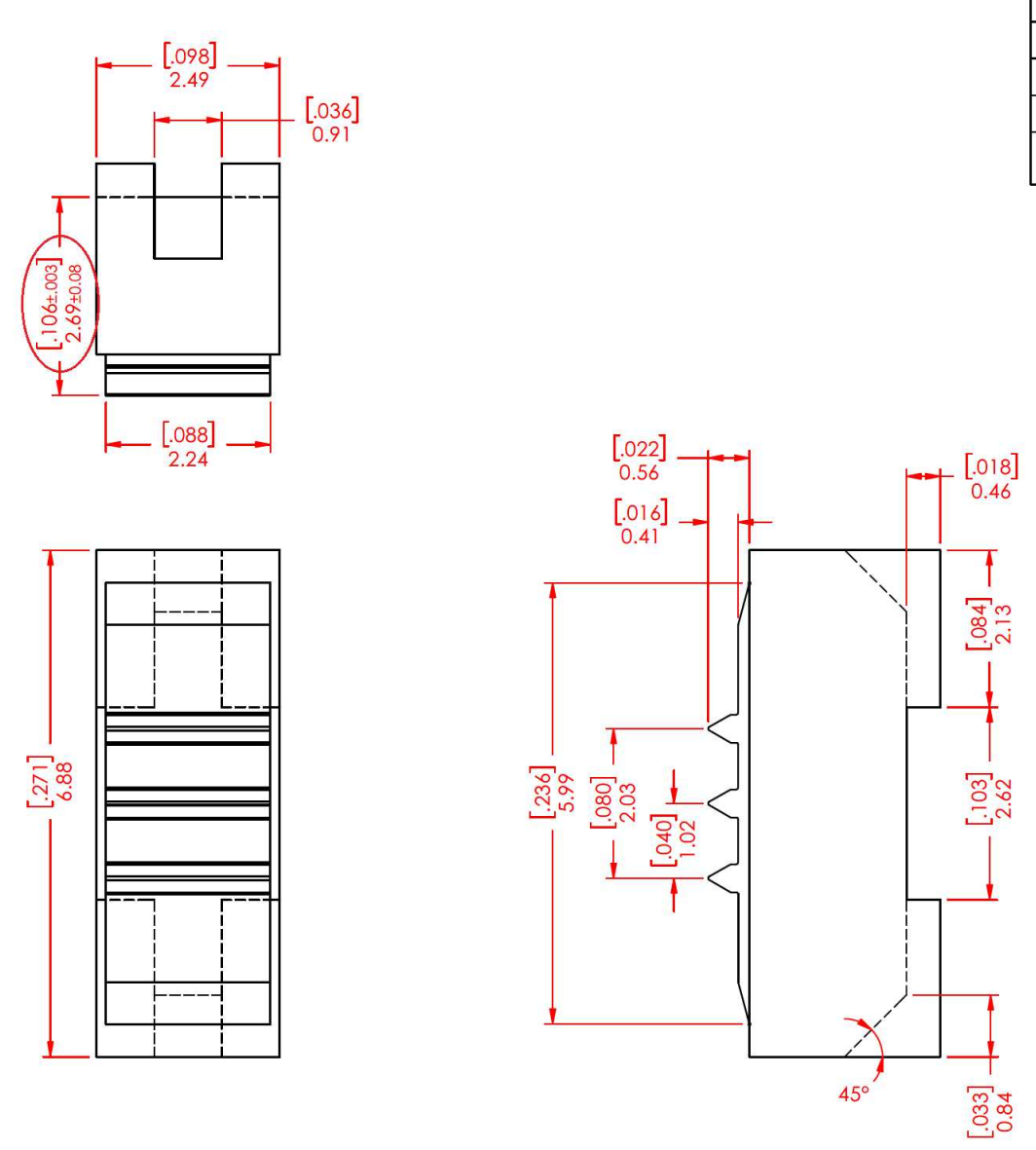


| ISSUE NUMBER | |
|---|---|
| ORIGINAL | ① |
| CONVERTED TO SW2020 C.B AUG. 21/2020 | ⑧ |

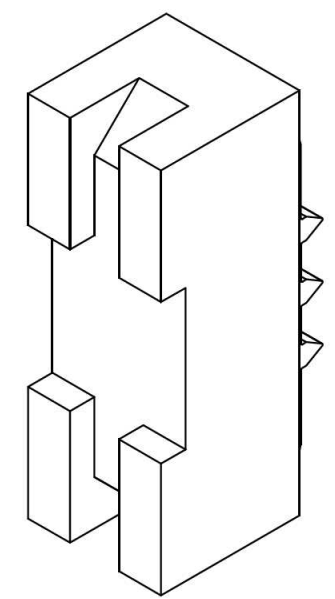
NOTE: FOR ORIGINAL DRAWING SEE BE-408-240-001
MATERIAL & FINISH: POLYPROPYLENE, GRADE CP0408, BLACK IN COLOR

| | | |
|--|--|--|
| POLARIZING INSERT EDAC INC TORONTO, ONTARIO CANADA YOUR CONNECTION TO QUALITY & SERVICE | | ACAD REFERENCE NO.: 408-240-001 |
| | | DRAWN: R. WEAVER DATE: JUL, 10/1973 |
| CHECKED: | | DATE: |
| SCALE: 10:1 | | SHEET 1 OF 1 |
| DRAWING NUMBER: 408-240-001 | | ISSUE |
| PART NUMBER: 408-240-328 | | 8 |

THIS SERIES FULLY CONFORMS TO THE EUROPEAN UNION DIRECTIVES 2011/65/EU FOR RoHS COMPLIANCY.

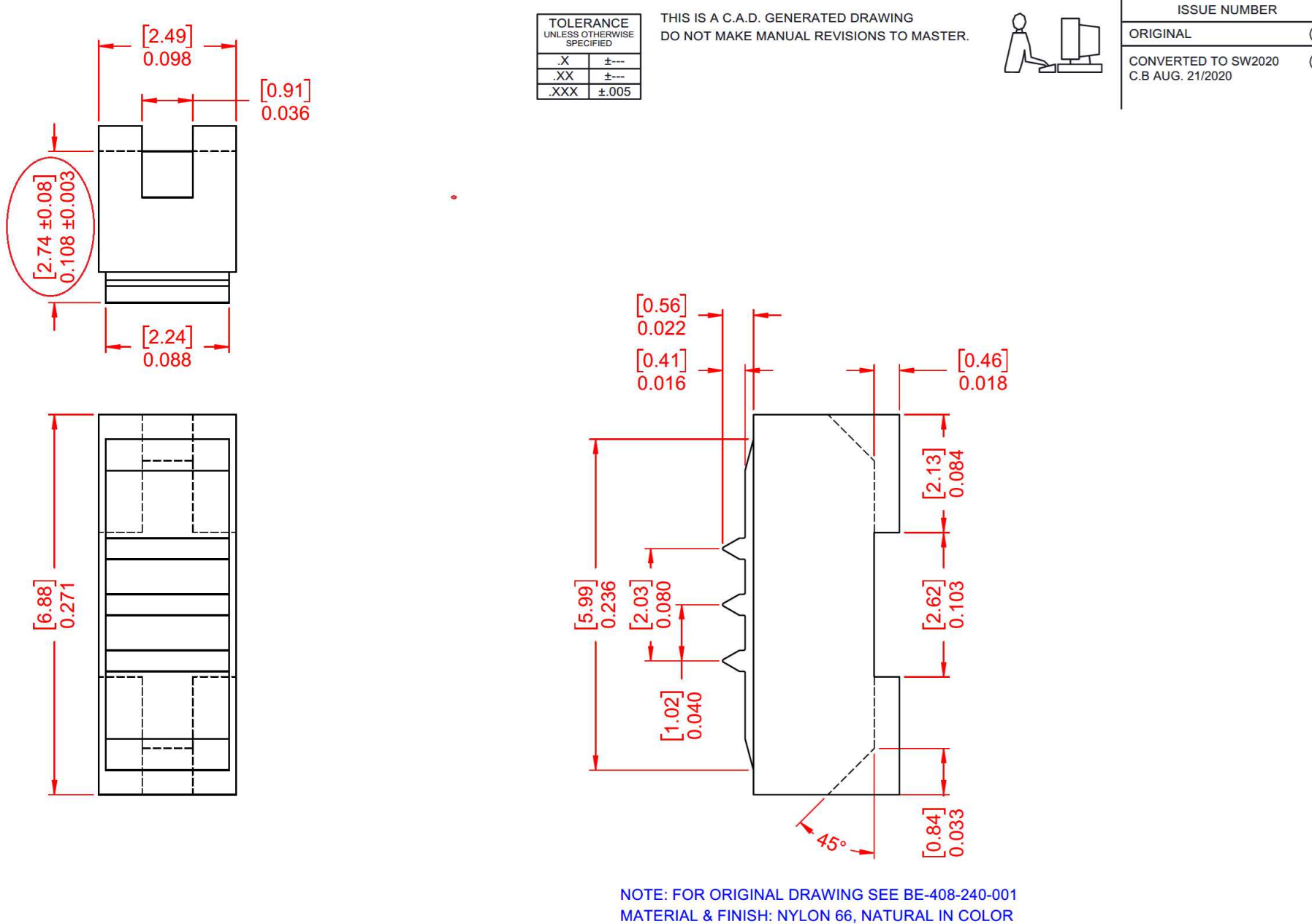


| REVISIONS | | | |
|-----------|--|------------|-------|
| REV. | DESCRIPTION | DATE | BY |
| 1 | ORIGINAL | DRAWN DATE | R.W |
| 8 | CONVERTED TO SW2020 | 08/21/2020 | C.B |
| 9 | PA66 NATURAL WAS PP BLACK, 2.69 WAS 2.74 | 03/22/2026 | J.S.M |



NOTES
MATERIAL: PA66, NATURAL COLOR
FOR ORIGINAL DRAWING SEE BE-408-240-001

| | | | | |
|---|-------------------------------------|--------------------------|----------------|---------|
| | DRAWN BY: R.W | POLARIZING INSERT | | |
| | DRAWN DATE: 07/10/1973 | | | |
| RoHS COMPLIANT THESE DRAWINGS AND SPECIFICATIONS ARE THE PROPERTY OF EDAC, AND SHALL NOT BE REPRODUCED, OR COPIED OR USED AS THE BASIS FOR THE MANUFACTURE OR SALE OF APPARATUS WITHOUT WRITTEN PERMISSION. | CHECKED BY: R.S.M | PART NUMBER: 408-240-328 | MATERIAL: PA66 | SIZE: A |
| | CHECK DATE: 03/22/2026 | | | |
| TOLERANCES | ALL DIMENSIONS AND TOLERANCES IN MM | SCALE: 10:1 | SHEET 1 OF 1 | |
| .X | | | | |
| .XX | | | | |
| .XXX ±0.13 | | | | |



| TOLERANCE UNLESS OTHERWISE SPECIFIED | |
|--------------------------------------|-------|
| X | ± |
| XX | ± |
| XXX | ±.005 |

THIS IS A C.A.D. GENERATED DRAWING DO NOT MAKE MANUAL REVISIONS TO MASTER.

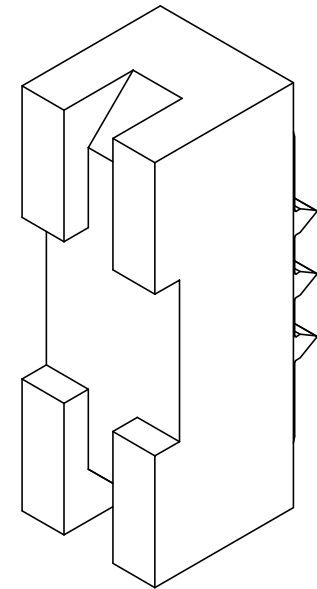
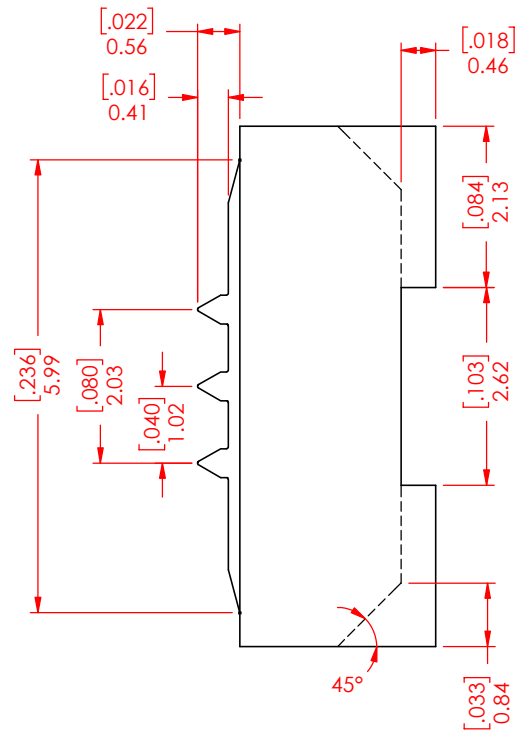
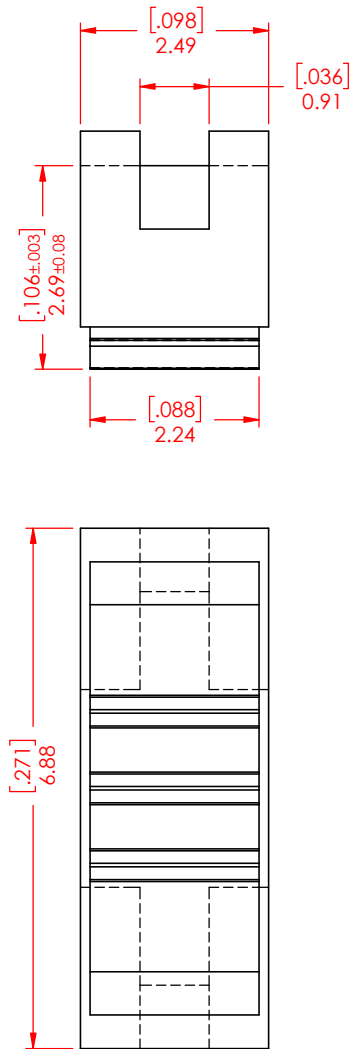


| ISSUE NUMBER | |
|---|---|
| ORIGINAL | ① |
| CONVERTED TO SW2020 C.B AUG. 21/2020 | ⑧ |

NOTE: FOR ORIGINAL DRAWING SEE BE-408-240-001
MATERIAL & FINISH: NYLON 66, NATURAL IN COLOR

| | | |
|--|--|--|
| POLARIZING INSERT EDAC INC TORONTO, ONTARIO CANADA YOUR CONNECTION TO QUALITY & SERVICE | | ACAD REFERENCE NO.: 408-240-001 |
| | | DRAWN: R. WEAVER DATE: JUL, 10/1973 |
| CHECKED: | | DATE: |
| SCALE: 10:1 | | SHEET 1 OF 1 |
| DRAWING NUMBER: 408-240-001 | | ISSUE |
| PART NUMBER: 408-240-328 | | 8 |

THIS SERIES FULLY CONFORMS TO THE EUROPEAN UNION DIRECTIVES 2011/65/EU FOR RoHS COMPLIANCY.



NOTES

MATERIAL: PA66, NATURAL COLOR

FOR ORIGINAL DRAWING SEE BE-408-240-001

| REVISIONS | | | |
|-----------|--|------------|-------|
| REV. | DESCRIPTION | DATE | BY |
| 1 | ORIGINAL | DRAWN DATE | R.W |
| 8 | CONVERTED TO SW2020 | 08/21/2020 | C.B |
| 9 | PA66 NATURAL WAS PP BLACK, 2.69 WAS 2.74 | 03/22/2026 | J.S.M |



RoHS
COMPLIANT

THESE DRAWINGS AND SPECIFICATIONS ARE THE PROPERTY OF EDAC, AND SHALL NOT BE REPRODUCED, OR COPIED OR USED AS THE BASIS FOR THE MANUFACTURE OR SALE OF APPARATUS WITHOUT WRITTEN PERMISSION.

| | | | | | |
|------------|-------------------------------------|-------------------------|-------------|----------|------|
| DRAWN BY | R.W | POLARIZING INSERT | | | |
| DRAWN DATE | 07/10/1973 | | | | |
| CHECKED BY | R.S.M | | | | |
| CHECK DATE | 03/22/2026 | PART NUMBER | 408-240-328 | | |
| TOLERANCES | ALL DIMENSIONS AND TOLERANCES IN MM | MATERIAL | PA66 | SIZE | A |
| .X | | SEE DRAWING 408-240-001 | | REVISION | |
| .XX | | | | R9 | |
| .XXX ±0.13 | SCALE | 10:1 | SHEET | 1 | OF 1 |