



161 Alden Road, Units 7 & 8, Markham, Ontario Canada L3R 3W7
 Tel: +1 416 754-3322 Fax: +1 416-754-3299
 Email: support@edac.net http://www.edac.net
ENGINEERING CHANGE NOTICE

Originator:	Wenyu Qin	Date:	Document Number
Phone No.	416-754-3322	March 25, 2026	ECN20260325-00
Email Address:	wqin@edacgroup.net		
Department	Quality	Revision Number	SHEET
		1	8

CHANGE TYPE:

CLASS I Customer notification and approval required prior to implementation

CLASS II Customer notification only, no approval required

CLASS III No customer notification required

REASON OF CHANGE

Updated/Added Specifications and optimized drawings and ordering guide

DESCRIPTION OF CHANGE:

This change is to update missing information involves the 140 series parts. The changes can be categorized as follows:

1. For Side Entry SMT:

Updated Temperature Range, and added Mating Parts, and Contact Material.

2. For Top Entry SMT, Side Entry Through Hole, Top Entry Through Hole, Kinked Side Entry, Kinked Top Entry:

Added Mating Parts and Contact Material.

3. For Housing:

Updated Temperature Range and added Mating Parts.
 Removed Contact Resistance.

For detailed change information, please refer to Pages 2 and 8.

The Ordering Guide for 140 Series have been optimized to the new template. Please use the link below to download the latest version.

<https://edac.net/series/140>

IMPLEMENTATION: 3/27/2026

PARTIES AFFECTED

Customer
 Distributors
 Suppliers

NORCOMP
 MH
 ETW

ECA
 EDG
 EDAC UK

KEY TARGET DUE DATES IF CHANGE IS APPROVED TO PROCEED (check if applicable and show target dates as known)

<input type="checkbox"/> Submit Quote	_____	<input type="checkbox"/> PPAP from Supplier	_____
<input type="checkbox"/> Prod. Trial Run	_____	<input type="checkbox"/> MRD of Production Parts	_____
<input type="checkbox"/> Run at Rate	_____	<input type="checkbox"/> UL / CSA / RoHS / REACH	_____

ACKNOWLEDGEMENT FOR ECN INITIATION: (OPTIONALS)

<input type="checkbox"/> Tooling Rep	_____	<input type="checkbox"/> Marketing Rep	<u>Marco Lamanna</u>
<input type="checkbox"/> Mfg Eng Rep	_____	<input type="checkbox"/> Facilities Rep	_____
<input type="checkbox"/> Production Rep	_____	<input type="checkbox"/> Sales Rep.	<u>Esther Marothv</u>
<input type="checkbox"/> Materials Rep	_____	<input type="checkbox"/> Product Eng. Rep.	_____
<input checked="" type="checkbox"/> Quality Rep	<u>Wenyu Qin</u>	<input type="checkbox"/> Purchasing Rep	_____

STATUS

APPROVED
 CCS CHANGE REQUEST # _____

APPROVALS FOR ECN INITIATION (REQUIRED)

<input checked="" type="checkbox"/> General Manager	<u>Bob Sakitkovski</u>	<input checked="" type="checkbox"/> Quality Engineer	<u>Wenyu Qin</u>
<input checked="" type="checkbox"/> Engineering Manager	<u>Ronnie Sta Monica</u>	<input checked="" type="checkbox"/> Engineer	<u>Vinesh Kamania</u>
<input checked="" type="checkbox"/> Business Development Manager	<u>Kobie Samuels</u>		

K.S. 3-31-26

REJECTED
 Change REJECTED by: _____
 Rejected Date: _____

R1

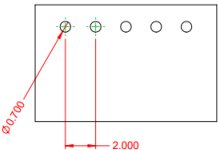
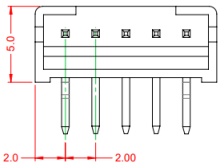
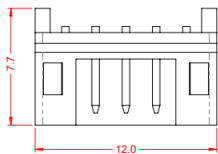
R2

TOLERANCE UNLESS OTHERWISE SPECIFIED
.X ±0.25
.XX ±0.13
.XXX ±0.05

THIS IS A C.A.D. GENERATED DRAWING
DO NOT MAKE MANUAL REVISIONS TO MASTER.

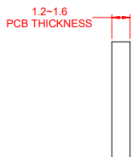
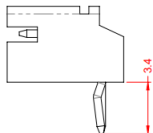


ISSUE NUMBER
ORIGINAL ①



SUGGESTED PCB LAYOUT

NOTES:
CURRENT RATING: 2A AC/DC
VOLTAGE RATING: 100V AC/DC
TEMPERATURE RATING: -40°C ~ 105°C
CONTACT RESISTANCE: 10mΩ MAX.
HOUSING RESISTANCE: 1000MΩ min.
WITHSTANDING VOLTAGE: 800V AC / 60s
HOUSING MATERIAL: NYLON PA66, UL94V-0



1.2-1.6
PCB THICKNESS

EDAC INC TORONTO, ONTARIO CANADA YOUR CONNECTION TO QUALITY & SERVICE		ACAD REFERENCE NO.: 140 Assembly	
		DRAWN: C.B.	DATE: March 27, 2020
THIS SERIES FULLY CONFORMS TO THE EUROPEAN UNION DIRECTIVES 2011/65/EU FOR RoHS COMPLIANCY.		SCALE: S:1	SHEET 1 OF 1
		DRAWING NUMBER: 140 Assembly	ISSUE: 1
		PART NUMBER: 140-505-415-000	

REVISIONS			
REV.	DESCRIPTION	DATE	BY
1	ORIGINAL	DRAWN DATE	
2	SPECIFICATIONS ADDED	6/27/2025	V.K.

12.0

5.0
2.0
2.00

7.70
3.4

0.700
2.000

RECOMMENDED PCB LAYOUT

1.2-1.6
PCB THICKNESS

RoHS COMPLIANT

THESE DRAWINGS AND SPECIFICATIONS ARE THE PROPERTY OF EDAC, AND SHALL NOT BE REPRODUCED, OR COPIED OR USED AS THE BASIS FOR THE MANUFACTURE OR SALE OF APPARATUS WITHOUT WRITTEN PERMISSION.

DRAWN BY	C.B.	140 SERIES PIN HEADER, 2.00 PITCH, SIDE ENTRY THROUGH HOLE KINKED
DRAWN DATE	03/27/2020	
CHECKED BY	R.S.M.	
CHECK DATE	03/27/2020	
PART NUMBER		140-505-415-000
TOLERANCES	ALL DIMENSIONS AND TOLERANCES IN MM	MATERIAL
.X	±0.25	SIZE
.XX	±0.13	REVISION
.XXX	±0.05	2
SCALE		S:1
SHEET		1 OF 1

INSULATOR MATERIAL: PA66, UL94V-0
CONTACT MATERIAL: BRASS, TIN-PLATED
MATES WITH HOUSING: 140-505-210-011

R1

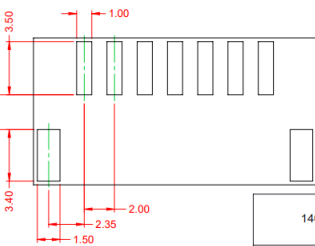
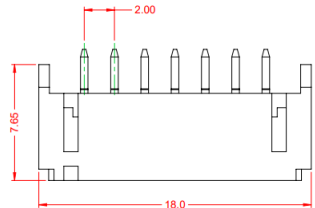
R2

TOLERANCE UNLESS OTHERWISE SPECIFIED
X ±0.25
XX ±0.13
XXX ±0.05

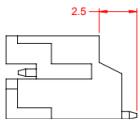
THIS IS A C.A.D. GENERATED DRAWING
DO NOT MAKE MANUAL REVISIONS TO MASTER.



ISSUE NUMBER
ORIGINAL ①



NOTES:
CURRENT RATING: 2A AC/DC
VOLTAGE RATING: 100V AC/DC
TEMPERATURE RATING: -25°C - 85°C
CONTACT RESISTANCE: 10mΩ MAX.
HOUSING RESISTANCE: 1000MΩ min.
WITHSTANDING VOLTAGE: 800V AC / 60s
HOUSING MATERIAL: NYLON9T, UL94V-0
SOLDER TEMPERATURE RESISTANCE: 250°C for 10s MAX



140 SERIES RIGHT ANGLE SMT MOUNT

ACAD REFERENCE NO.: 140 Assembly	
DRAWN BY: C.B	DATE: March 28, 2020
CHECKED:	DATE:
SCALE: 5:1	SHEET 1 OF 1
DRAWING NUMBER: 140 Assembly	ISSUE
PART NUMBER: 140-507-417-060	1



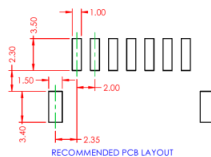
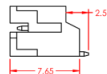
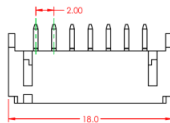
THIS SERIES FULLY CONFORMS TO THE EUROPEAN UNION DIRECTIVES 2011/65/EU FOR RoHS COMPLIANCE.



EDAC INC
TORONTO, ONTARIO
CANADA
YOUR CONNECTION TO QUALITY & SERVICE

THESE DRAWINGS AND SPECIFICATIONS ARE THE PROPERTY OF EDAC INC. AND SHALL NOT BE REPRODUCED OR COPIED OR USED AS THE BASIS FOR THE MANUFACTURE OR SALE OF APPARATUS WITHOUT WRITTEN PERMISSION.

REVISIONS			
REV.	DESCRIPTION	DATE	BY
1	ORIGINAL	DRAWN DATE	
2	SPECIFICATIONS ADDED/MODIFIED	7/3/2025	V.K.



SPECIFICATIONS
VOLTAGE RATING: 100V AC/DC
CURRENT RATING: 2A AC/DC
WITHSTANDING VOLTAGE: 800V AC / 60s
TEMPERATURE RATING: -40°C TO 105°C
INSULATION RESISTANCE: 1000MΩ MIN
CONTACT RESISTANCE: 10mΩ MAX

INSULATOR MATERIAL: PA9T, UL94V-0

CONTACT MATERIAL: BRASS, TIN-PLATED

MATES WITH HOUSING: 140-507-210-011



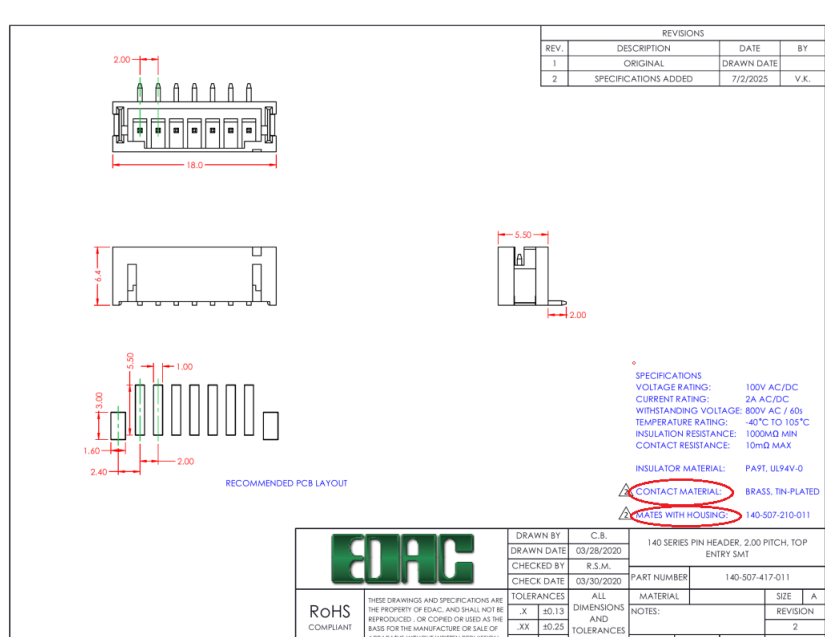
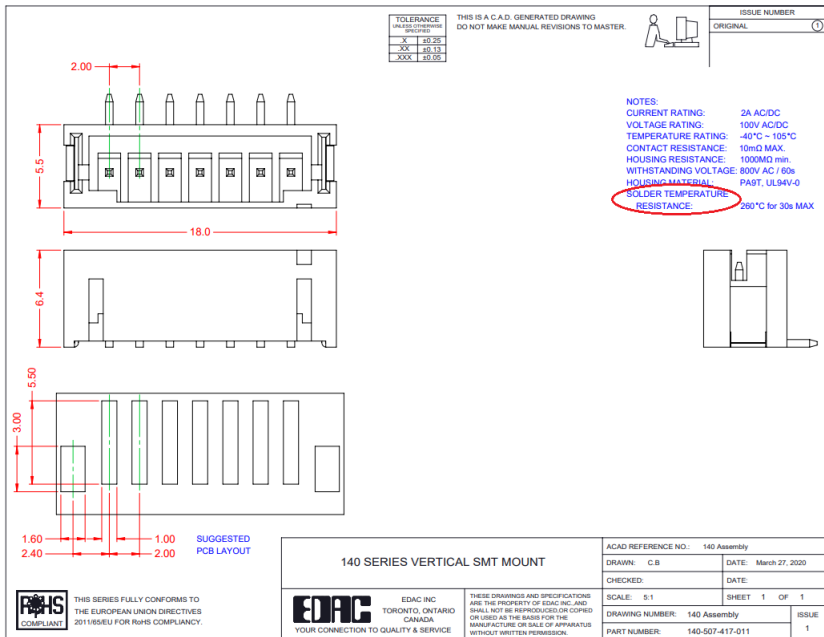
RoHS
COMPLIANT

THESE DRAWINGS AND SPECIFICATIONS ARE THE PROPERTY OF EDAC, AND SHALL NOT BE REPRODUCED, OR COPIED OR USED AS THE BASIS FOR THE MANUFACTURE OR SALE OF APPARATUS WITHOUT WRITTEN PERMISSION.

DRAWN BY: C.B.	140 SERIES PIN HEADER, 2.00 PITCH, SIDE ENTRY SMT
DRAWN DATE: 03/28/2020	
CHECKED BY: R.S.M.	
CHECK DATE: 03/30/2020	PART NUMBER: 140-507-417-060
TOLERANCES	MATERIAL
.X ±0.25	ALL DIMENSIONS AND TOLERANCES IN MM
.XX ±0.13	NOTES:
.XXX ±0.05	SCALE: 3:1
	SHEET 1 OF 1

R1

R2

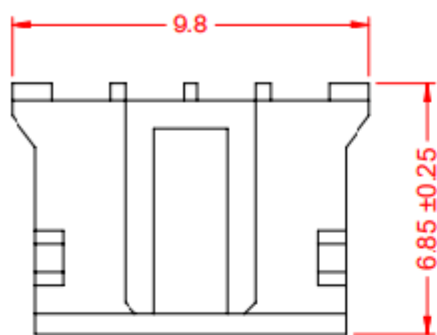


TOLERANCE UNLESS OTHERWISE SPECIFIED	
.X	±0.25
.XX	±0.13
.XXX	±0.05

THIS IS A C.A.D. GENERATED DRAWING
DO NOT MAKE MANUAL REVISIONS TO MASTER.

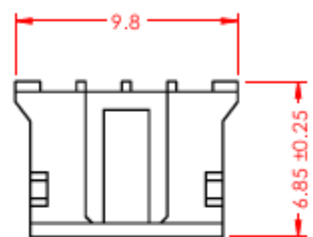
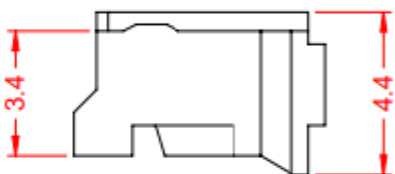
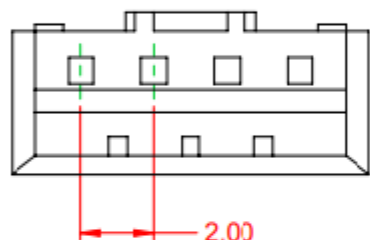


ISSUE NUMBER
ORIGINAL ①

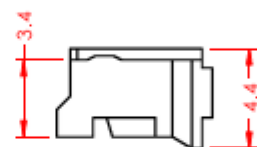
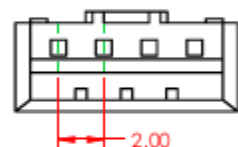


R1

NOTES:
CURRENT RATING: 2A AC/DC
VOLTAGE RATING: 100V AC/DC
TEMPERATURE RATING: -25°C ~ 85°C
(CONTACT RESISTANCE: 10mΩ MAX.)
HOUSING RESISTANCE: 1000MΩ min.
WITHSTANDING VOLTAGE 800V AC / 60s
HOUSING MATERIAL: NYLON PA36, UL94V-0



R2



SPECIFICATIONS
VOLTAGE RATING: 100V AC/DC
WITHSTANDING VOLTAGE: 800V AC / 60s
TEMPERATURE RATING: -40°C to 105°C
INSULATION RESISTANCE: 1000MΩ MIN

INSULATOR MATERIAL: PA66, UL94V-0

MATES WITH	
△ TOP ENTRY KINKED	140-504-415-001
△ TOP ENTRY STRAIGHT	140-504-415-101
△ TOP ENTRY SMT	140-504-417-011
△ SIDE ENTRY KINKED	140-504-415-000
△ SIDE ENTRY STRAIGHT	140-504-415-100
△ SIDE ENTRY SMT	140-504-417-060

140 SERIES FEMALE CRIMP CONTACT HOUSING		ACAD REFERENCE NO.: 140 Assembly	
DRAWN: C.B.	DATE: April 3, 2020	DRAWING NUMBER: 140 Assembly	ISSUE: 1
CHECKED:	DATE:	PART NUMBER: 140-504-210-011	
SCALE: 5:1	SHEET 1 OF 1		

EDAC EDAC INC
TORONTO, ONTARIO
CANADA
YOUR CONNECTION TO QUALITY & SERVICE

THESE DRAWINGS AND SPECIFICATIONS ARE THE PROPERTY OF EDAC INC. AND SHALL NOT BE REPRODUCED OR COPIED OR USED AS THE BASIS FOR THE MANUFACTURE OR SALE OF APPARATUS WITHOUT WRITTEN PERMISSION.

EDAC

RoHS
COMPLIANT

THESE DRAWINGS AND SPECIFICATIONS ARE THE PROPERTY OF EDAC, AND SHALL NOT BE REPRODUCED, OR COPIED OR USED AS THE BASIS FOR THE MANUFACTURE OR SALE OF APPARATUS WITHOUT WRITTEN PERMISSION.

DRAWN BY: C.B.		140 SERIES HOUSING, 2.00 PITCH	
DRAWN DATE: 04/03/2020	CHECKED BY: R.S.M.	PART NUMBER: 140-504-210-011	
CHECK DATE: 04/06/2020	TOLERANCES	MATERIAL:	SIZE: A
.X ±0.25	ALL DIMENSIONS AND TOLERANCES IN MM	NOTES:	REVISION: 2
.XX ±0.13			SCALE: 3:1
.XXX ±0.05			SHEET: 1 OF 1



THIS SERIES FULLY CONFORMS TO THE EUROPEAN UNION DIRECTIVES 2011/65/EU FOR RoHS COMPLIANCY.

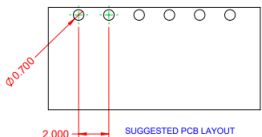
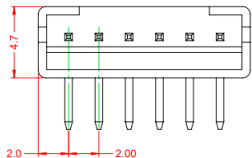
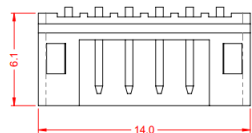
R1

TOLERANCE UNLESS OTHERWISE SPECIFIED	
.X	±0.25
.XX	±0.13
.XXX	±0.06

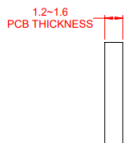
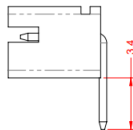
THIS IS A C.A.D. GENERATED DRAWING
DO NOT MAKE MANUAL REVISIONS TO MASTER.



ISSUE NUMBER
ORIGINAL ①



NOTES:
CURRENT RATING: 2A AC/DC
VOLTAGE RATING: 100V AC/DC
TEMPERATURE RATING: -40°C - 105°C
CONTACT RESISTANCE: 10mΩ MAX.
WITHSTANDING VOLTAGE: 800V AC / 60s
HOUSING MATERIAL: NYLON PA66, UL94V-0



140 SERIES RIGHT ANGLE PCB MOUNT

ACAD REFERENCE NO.: 140 Assembly	
DRAWN: C.B.	DATE: March 31, 2020
CHECKED:	DATE:
SCALE: 1:0.5	SHEET 1 OF 1
DRAWING NUMBER: 140 Assembly	ISSUE 1
PART NUMBER: 140-506-415-100	



THIS SERIES FULLY CONFORMS TO THE EUROPEAN UNION DIRECTIVES 2011/65/EU FOR RoHS COMPLIANCE.

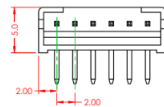
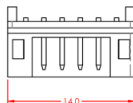


EDAC INC
TORONTO, ONTARIO
CANADA
YOUR CONNECTION TO QUALITY & SERVICE

THESE DRAWINGS AND SPECIFICATIONS ARE THE PROPERTY OF EDAC INC. AND SHALL NOT BE REPRODUCED OR COPIED OR USED AS THE BASIS FOR THE MANUFACTURE OR SALE OF APPARATUS WITHOUT WRITTEN PERMISSION.

R2

REVISIONS			
REV.	DESCRIPTION	DATE	BY
1	ORIGINAL	DRAWN DATE	
2	SHAPE CHANGED, SPECS ADDED	6/25/2025	V.K.



RECOMMENDED PCB LAYOUT



SPECIFICATIONS:
VOLTAGE RATING: 100V AC/DC
CURRENT RATING: 2A AC/DC
WITHSTANDING VOLTAGE: 800V AC / 60s
TEMPERATURE RATING: -40°C TO 105°C
INSULATION RESISTANCE: 10mΩ MAX
CONTACT RESISTANCE: 1000mΩ MIN

INSULATOR MATERIAL: PA66, UL94V-0

CONTACT MATERIAL: BRASS, TIN-PLATED

MATES WITH HOUSING: 140-506-210-011



THESE DRAWINGS AND SPECIFICATIONS ARE THE PROPERTY OF EDAC, AND SHALL NOT BE REPRODUCED, OR COPIED OR USED AS THE BASIS FOR THE MANUFACTURE OR SALE OF APPARATUS WITHOUT WRITTEN PERMISSION.

DRAWN BY: C.B.	140 SERIES PIN HEADER, 2.00 PITCH, THROUGH HOLE SIDE ENTRY	
DRAWN DATE: 03/31/2020		
CHECKED BY: R.S.M.		
CHECK DATE: 03/31/2020	PART NUMBER: 140-506-415-100	
TOLERANCES	MATERIAL:	SIZE: A
.X ±0.25	NOTES:	REVISION: 1
.XX ±0.13		SCALE: 5:1
.XXX ±0.05		SHEET: 1 OF 1

R1

TOLERANCE UNLESS OTHERWISE SPECIFIED	
X	±0.25
XX	±0.13
XXX	±0.05

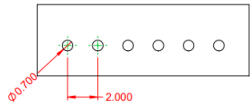
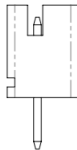
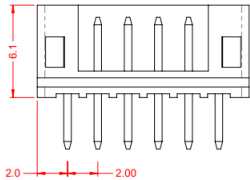
THIS IS A C.A.D. GENERATED DRAWING
DO NOT MAKE MANUAL REVISIONS TO MASTER.



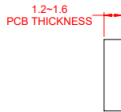
ISSUE NUMBER
ORIGINAL ①



NOTES:
CURRENT RATING: 2A AC/DC
VOLTAGE RATING: 100V AC/DC
TEMPERATURE RATING: -40°C - 105°C
CONTACT RESISTANCE: 10mΩ MAX.
HOUSING RESISTANCE: 1000MΩ min.
WITHSTANDING VOLTAGE: 800V AC / 60s
HOUSING MATERIAL: NYLON PA66, UL94V-0



SUGGESTED PCB LAYOUT



140 SERIES VERTICAL PCB MOUNT



THIS SERIES FULLY CONFORMS TO
THE EUROPEAN UNION DIRECTIVES
2011/65/EU FOR RoHS COMPLIANCY.

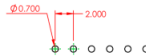
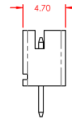
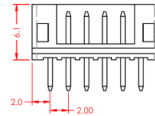
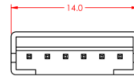


THESE DRAWINGS AND SPECIFICATIONS
ARE THE PROPERTY OF EDAC INC. AND
SHALL NOT BE REPRODUCED OR COPIED
OR USED AS THE BASIS FOR THE
MANUFACTURE OR SALE OF APPARATUS
WITHOUT WRITTEN PERMISSION.

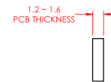
ACAD REFERENCE NO.:	140 Assembly
DRAWN:	C.B.
CHECKED:	
SCALE:	5:1
DRAWING NUMBER:	140 Assembly
PART NUMBER:	140-506-415-101
DATE:	March 27, 2020
DATE:	
SHEET	1 OF 1
ISSUE	1

R2

REVISIONS			
REV.	DESCRIPTION	DATE	BY
1	ORIGINAL	DRAWN DATE	
2	SPECIFICATIONS ADDED	6/27/2025	V.K.



RECOMMENDED PCB LAYOUT



SPECIFICATIONS
VOLTAGE RATING: 100V AC/DC
CURRENT RATING: 2A AC/DC
WITHSTANDING VOLTAGE: 800V AC / 60s
TEMPERATURE RATING: -40°C TO 105°C
INSULATION RESISTANCE: 1000MΩ MIN
CONTACT RESISTANCE: 10mΩ MAX

INSULATOR MATERIAL: PA66, UL94V-0

CONTACT MATERIAL: BRASS, TN-PLATED

MATES WITH HOUSING: 140-506-210-011



RoHS
COMPLIANT

THESE DRAWINGS AND SPECIFICATIONS ARE
THE PROPERTY OF EDAC, AND SHALL NOT BE
REPRODUCED, OR COPIED OR USED AS THE
BASIS FOR THE MANUFACTURE OR SALE OF
APPARATUS WITHOUT WRITTEN PERMISSION.

DRAWN BY:	C.B.	140 SERIES PIN HEADER, 2.00 PITCH, TOP ENTRY THROUGH HOLE	
DRAWN DATE:	03/27/2020		
CHECKED BY:	R.S.M.		
CHECK DATE:	03/27/2020		
TOLERANCES	ALL DIMENSIONS AND TOLERANCES	PART NUMBER:	140-506-415-101
.X	±0.25	MATERIAL:	
.XX	±0.13	NOTES:	REVISION
.XXX	±0.05		2
	IN MM	SCALE:	3:1
		SHEET:	1 OF 1