



161 Alden Road, Units 7 & 8, Markham, Ontario Canada L3R 3W7  
 Tel: +1 416 754-3322 Fax: +1 416-754-3299  
 Email: support@edac.net http://www.edac.net  
**ENGINEERING CHANGE NOTICE**

Originator:	Wenyu Qin	Date:	Document Number
Phone No.	416-754-3322	April 8, 2026	ECN20260408-00
Email Address:	<a href="mailto:wqin@edacgroup.net">wqin@edacgroup.net</a>	Revision Number	SHEET
Department	Quality	1	3

**CHANGE TYPE:**

- CLASS I Customer notification and approval required prior to implementation
- CLASS II Customer notification only, no approval required
- CLASS III No customer notification required

**REASON OF CHANGE**

Specification Update and added

**DESCRIPTION OF CHANGE:**

The part 698B116-264-211 will be revised as follows:  
 1. Add recommended plating and PCB tolerance.  
 2. Clarify insertion force, withdrawal force, and durability.  
 3. Add the pin configuration table.  
 There is no Form, Fit, Function issue associated with this change.

For detailed change information, please refer to Pages 2.

IMPLEMENTATION: Running Change

**PARTIES AFFECTED**

- |  |   |   |
|--|---|---|
| <input checked="" type="checkbox"/> Customer     | <input type="checkbox"/> NORCOMP        | <input checked="" type="checkbox"/> ECA     |
| <input checked="" type="checkbox"/> Distributors | <input type="checkbox"/> MH             | <input checked="" type="checkbox"/> EDG     |
| <input type="checkbox"/> Suppliers               | <input checked="" type="checkbox"/> ETW | <input checked="" type="checkbox"/> EDAC UK |

**KEY TARGET DUE DATES IF CHANGE IS APPROVED TO PROCEED** (check if applicable and show target dates as known)

- |  |       |  |       |
|--|-------|--|-------|
| <input type="checkbox"/> Submit Quote    | _____ | <input type="checkbox"/> PPAP from Supplier      | _____ |
| <input type="checkbox"/> Prod. Trial Run | _____ | <input type="checkbox"/> MRD of Production Parts | _____ |
| <input type="checkbox"/> Run at Rate     | _____ | <input type="checkbox"/> UL / CSA / RoHS / REACH | _____ |

**ACKNOWLEDGEMENT FOR ECN INITIATION: (OPTIONALS)**

- |  |  |
|--|--|
| <input type="checkbox"/> Tooling Rep _____                       | <input checked="" type="checkbox"/> Marketing Rep <u>Marco Lamanna</u> |
| <input type="checkbox"/> Mfg Eng Rep _____                       | <input checked="" type="checkbox"/> Facilities Rep _____               |
| <input type="checkbox"/> Production Rep _____                    | <input checked="" type="checkbox"/> Sales Rep. <u>Esther Marothv</u>   |
| <input type="checkbox"/> Materials Rep _____                     | <input type="checkbox"/> Product Eng. Rep. _____                       |
| <input checked="" type="checkbox"/> Quality Rep <u>Wenyu Qin</u> | <input type="checkbox"/> Purchasing Rep _____                          |

**STATUS**

APPROVED

CCS CHANGE REQUEST # \_\_\_\_\_

REJECTED

Change REJECTED by: \_\_\_\_\_

Rejected Date: \_\_\_\_\_

**APPROVALS FOR ECN INITIATION (REQUIRED)**

- |   |   |
|---|---|
| <input checked="" type="checkbox"/> <b>General Manager</b>              | <input checked="" type="checkbox"/> <b>Quality Engineer</b> |
| <input checked="" type="checkbox"/> <b>Engineering Manager</b>          | <input checked="" type="checkbox"/> <b>Engineer</b>         |
| <input checked="" type="checkbox"/> <b>Business Development Manager</b> |   |
- Wenyu Qin  
 Ronnie Sta Monica  
 K. Samuels  
 4/20/26

# R1

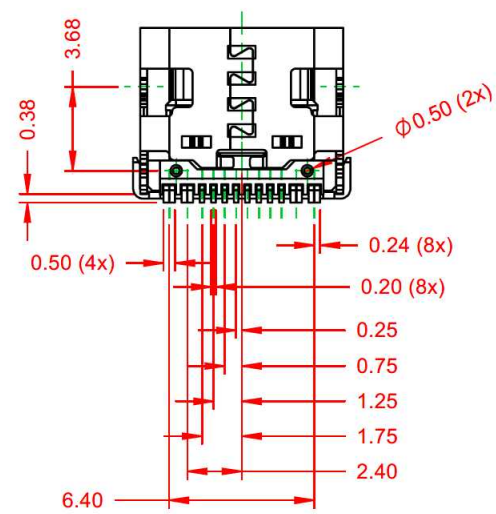
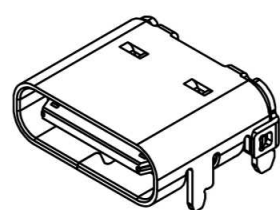
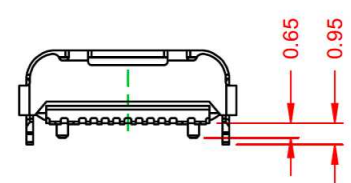
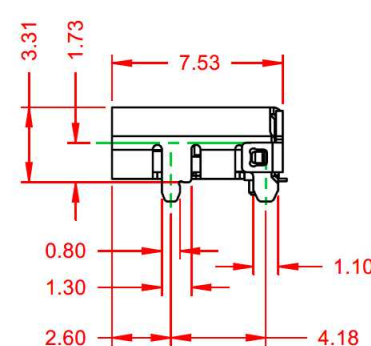
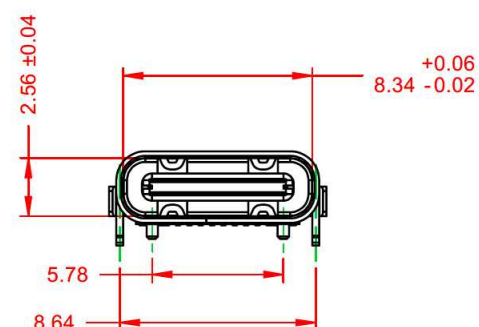
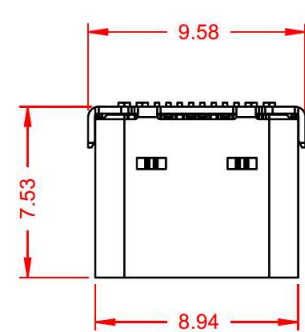
# R2

TOLERANCE UNLESS OTHERWISE SPECIFIED
.X ±0.25
.XX ±0.13
.XXX ±0.05

THIS IS A C.A.D. GENERATED DRAWING  
DO NOT MAKE MANUAL REVISIONS TO MASTER.



ISSUE NUMBER
ORIGINAL 1



**NOTE:**  
ELECTRICAL SPECIFICATIONS:  
CURRENT RATING: 5A MAX.  
CONTACT RESISTANCE: 40mΩ MAX.  
INSULATOR RESISTANCE: 100MΩ min.  
DIELECTRIC WITHSTANDING VOLTAGE: 100V AC  
OPERATING TEMPERATURE: -40°C ~ 85°C

**MATERIAL & FINISH:**  
SHELL: STAINLESS STEEL, NICKEL PLATED  
HOUSING: LCP, BLACK IN COLOUR, UL94V-0  
CONTACTS: COPPER ALLOY, GOLD FLASH PLATED

### 690 SERIES RECEPTACLES USB TYPE-C 16 PIN OPTION

ACAD REFERENCE NO.:	698B116-X64-211
DRAWN:	C.B
DATE:	December 22, 2020
CHECKED:	DATE:
SCALE:	3:1
SHEET:	1 OF 2
DRAWING NUMBER:	698B116-X64-211
ISSUE:	1
PART NUMBER:	698B116-264-211

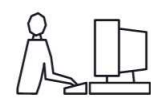


THESE DRAWINGS AND SPECIFICATIONS ARE THE PROPERTY OF EDAC INC. AND SHALL NOT BE REPRODUCED, COPIED OR USED AS THE BASIS FOR THE MANUFACTURE OR SALE OF APPARATUS WITHOUT WRITTEN PERMISSION.

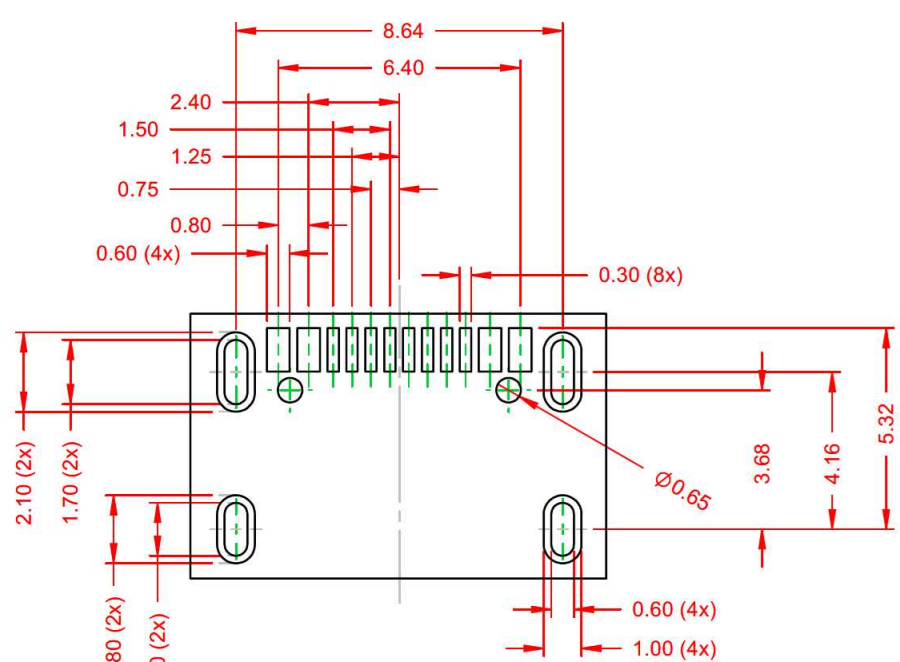
**RoHS COMPLIANT**  
THIS SERIES FULLY CONFORMS TO THE EUROPEAN UNION DIRECTIVES 2011/65/EU FOR RoHS COMPLIANCE.

TOLERANCE UNLESS OTHERWISE SPECIFIED
.X ±0.25
.XX ±0.13
.XXX ±0.05

THIS IS A C.A.D. GENERATED DRAWING  
DO NOT MAKE MANUAL REVISIONS TO MASTER.



ISSUE NUMBER
ORIGINAL 1



RECOMMENDED P.C.B LAYOUT  
TOLERANCE: ±0.05mm

### 690 SERIES RECEPTACLES USB TYPE-C 16 PIN OPTION PCB

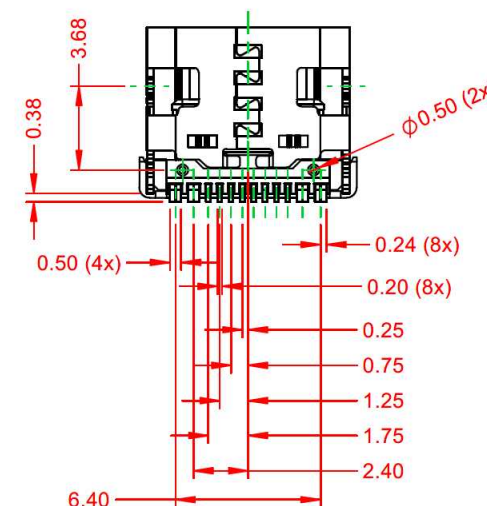
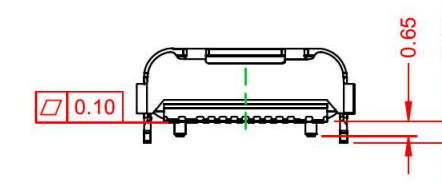
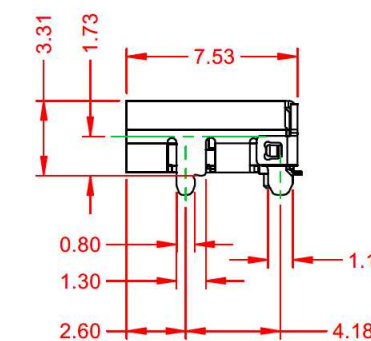
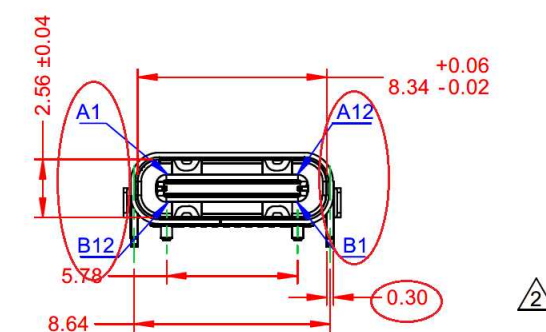
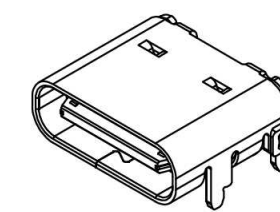
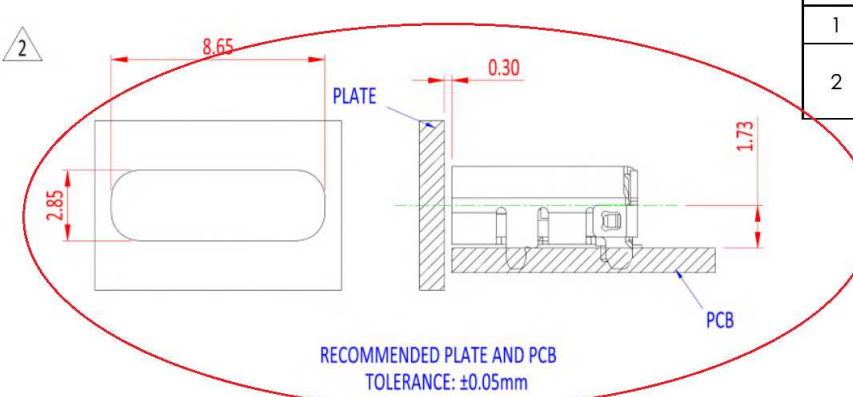
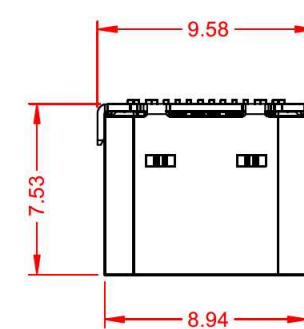
ACAD REFERENCE NO.:	698B116-X64-211
DRAWN:	C.B
DATE:	December 22, 2020
CHECKED:	DATE:
SCALE:	3:1
SHEET:	2 OF 2
DRAWING NUMBER:	698B116-X64-211
ISSUE:	1
PART NUMBER:	698B116-264-211



THESE DRAWINGS AND SPECIFICATIONS ARE THE PROPERTY OF EDAC INC. AND SHALL NOT BE REPRODUCED, COPIED OR USED AS THE BASIS FOR THE MANUFACTURE OR SALE OF APPARATUS WITHOUT WRITTEN PERMISSION.

**RoHS COMPLIANT**  
THIS SERIES FULLY CONFORMS TO THE EUROPEAN UNION DIRECTIVES 2011/65/EU FOR RoHS COMPLIANCE.

REVISIONS			
REV.	DESCRIPTION	DATE	BY
1	ORIGINAL	DRAWN DATE	C.B
2	ADD PIN CONFIGURATION TABLE, DIM 0.30, PLATE AND PCB VIEW, UPDATE SPECIFICATIONS	04/07/2026	J.S.M



### SPECIFICATIONS

**CONTACT MATERIAL:** COPPER ALLOY  
**CONTACT PLATING:** GOLD FLASH  
**HOUSING MATERIAL:** LCP, UL 94V-0, BLACK COLOR  
**SHELL MATERIAL:** STAINLESS STEEL, NICKEL PLATED

**CURRENT RATING:** 5A MAX.  
**WITHSTANDING VOLTAGE:** 100V AC  
**INSULATION RESISTANCE:** 100MΩ MIN.  
**CONTACT RESISTANCE:** 40mΩ MAX. BEFORE TEST  
50mΩ MAX. AFTER TEST

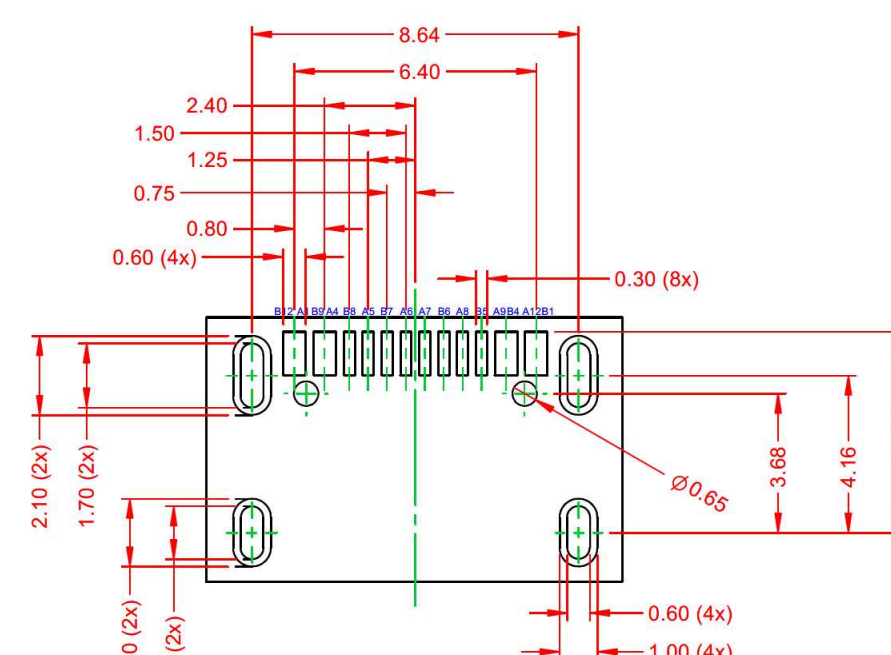
**OPERATING TEMPERATURE:** -40°C ~ +85°C  
**INSERTION FORCE:** 5-20N  
**WITHDRAWAL FORCE:** 8-20N  
**DURABILITY:** 10,000 CYCLES



**RoHS COMPLIANT**

THESE DRAWINGS AND SPECIFICATIONS ARE THE PROPERTY OF EDAC, AND SHALL NOT BE REPRODUCED, OR COPIED OR USED AS THE BASIS FOR THE MANUFACTURE OR SALE OF APPARATUS WITHOUT WRITTEN PERMISSION.

DRAWN BY:	C.B	690 SERIES RECEPTACLE USB TYPE-C 16 PIN OPTION	
DRAWN DATE:	12/22/2020		
CHECKED BY:	R.S.M		
CHECK DATE:	04/07/2026		
TOLERANCES	ALL DIMENSIONS AND TOLERANCES IN MM	PART NUMBER	698B116-264-211
.X	±0.25	MATERIAL	LCP
.XX	±0.15	SEE DRAWING	698B116-X64-211
.XXX	±0.05	SCALE	5:1
		SHEET	1 OF 2



RECOMMENDED P.C.B LAYOUT  
TOLERANCE: ±0.05mm

PIN CONFIGURATION			
PIN	SIGNAL NAME	PIN	SIGNAL NAME
A1	GND	B12	GND
A4	VBUS	B9	VBUS
A5	CC1	B8	SBU2
A6	DP1	B7	DN2
A7	DN1	B6	DP2
A8	SBU1	B5	CC2
A9	VBUS	B4	VBUS
A12	GND	B1	GND

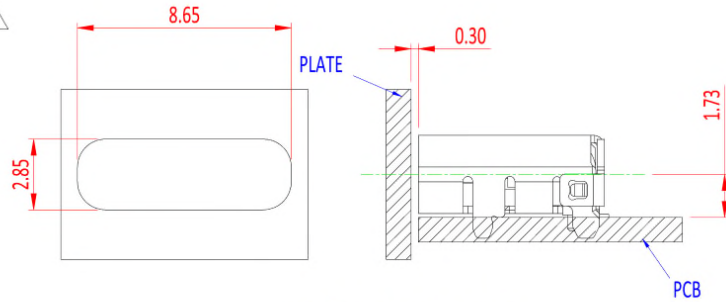
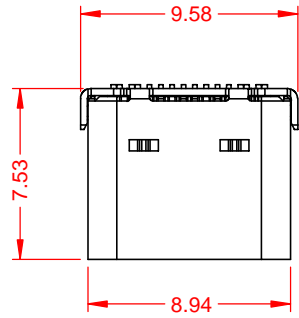


**RoHS COMPLIANT**

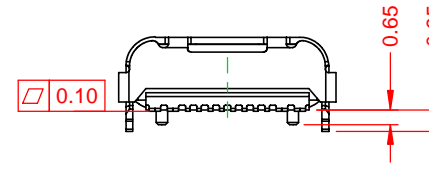
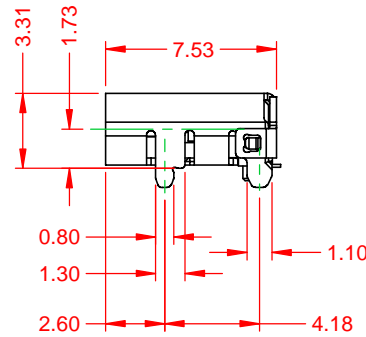
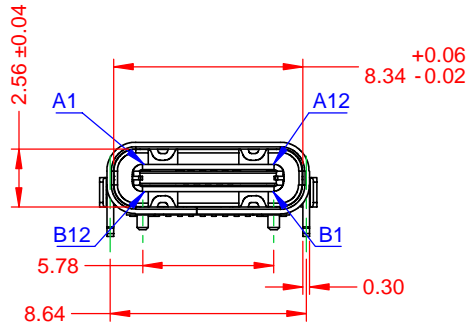
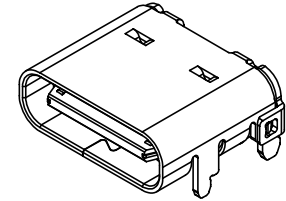
THESE DRAWINGS AND SPECIFICATIONS ARE THE PROPERTY OF EDAC, AND SHALL NOT BE REPRODUCED, OR COPIED OR USED AS THE BASIS FOR THE MANUFACTURE OR SALE OF APPARATUS WITHOUT WRITTEN PERMISSION.

DRAWN BY:	C.B	690 SERIES RECEPTACLE USB TYPE-C 16 PIN OPTION	
DRAWN DATE:	12/22/2020		
CHECKED BY:	R.S.M		
CHECK DATE:	04/07/2026		
TOLERANCES	ALL DIMENSIONS AND TOLERANCES IN MM	PART NUMBER	698B116-264-211
.X	±0.25	MATERIAL	LCP
.XX	±0.15	SEE DRAWING	698B116-X64-211
.XXX	±0.05	SCALE	5:1
		SHEET	2 OF 2

REVISIONS			
REV.	DESCRIPTION	DATE	BY
1	ORIGINAL	DRAWN DATE	C.B
2	ADD PIN CONFIGURATION TABLE, DIM 0.30, PLATE AND PCB VIEW, UPDATE SPECIFICATIONS	04/07/2026	J.S.M



RECOMMENDED PLATE AND PCB  
TOLERANCE: ±0.05mm

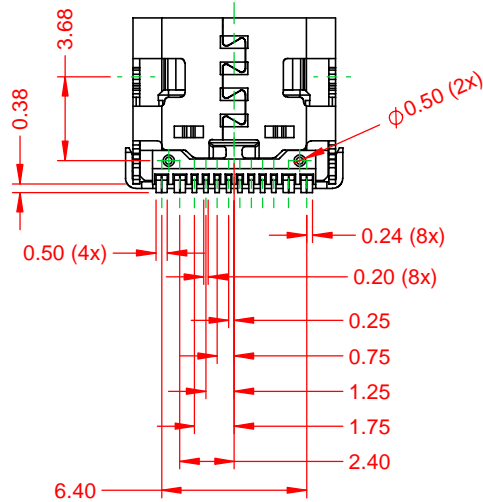
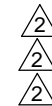


**SPECIFICATIONS**

CONTACT MATERIAL: COPPER ALLOY  
 CONTACT PLATING: GOLD FLASH  
 HOUSING MATERIAL: LCP, UL 94V-0, BLACK COLOR  
 SHELL MATERIAL: STAINLESS STEEL, NICKEL PLATED

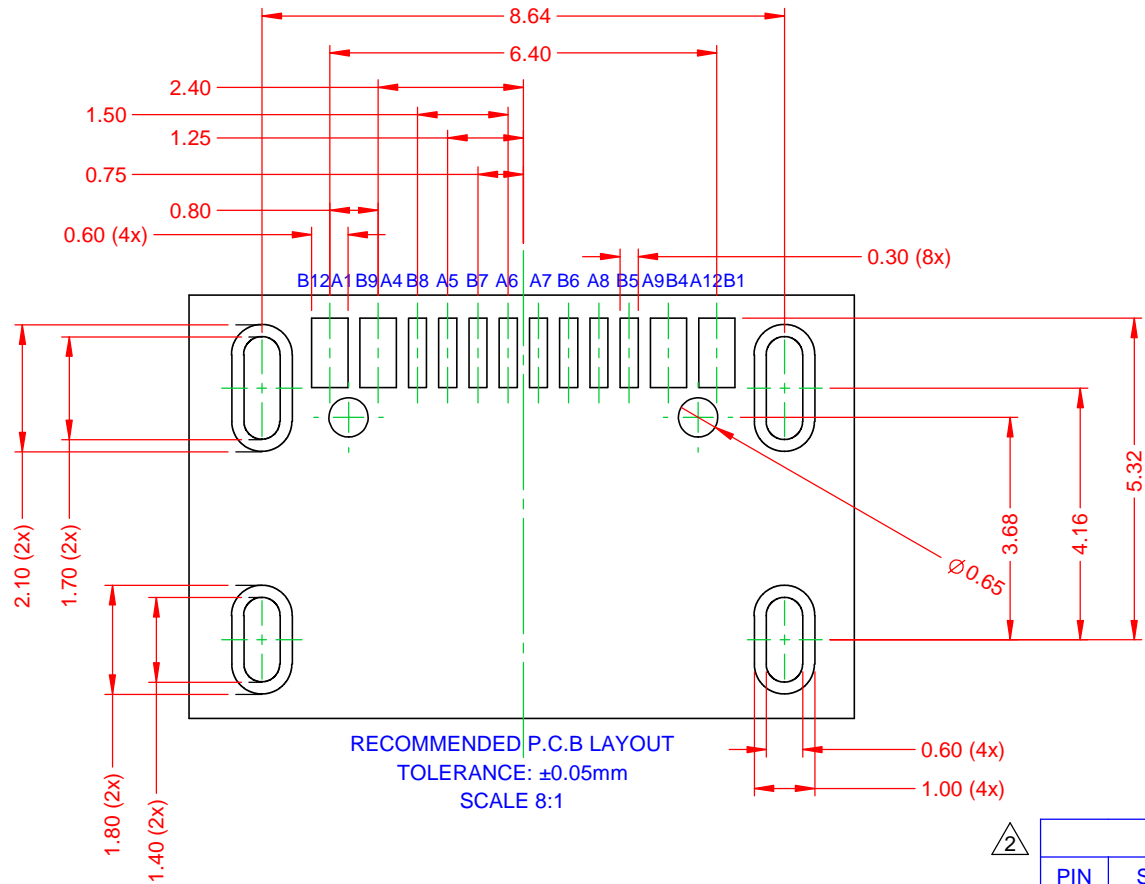
CURRENT RATING: 5A MAX.  
 WITHSTANDING VOLTAGE: 100V AC  
 INSULATION RESISTANCE: 100MΩ MIN.  
 CONTACT RESISTANCE: 40mΩ MAX. BEFORE TEST  
 50mΩ MAX. AFTER TEST

OPERATING TEMPERATURE: -40°C ~ +85°C  
 INSERTION FORCE: 5~20N  
 WITHDRAWAL FORCE: 8~20N  
 DURABILITY: 10,000 CYCLES



	DRAWN BY	C.B	690 SERIES RECEPTACLE USB TYPE-C 16 PIN OPTION			
	DRAWN DATE	12/22/2020				
RoHS COMPLIANT	CHECKED BY	R.S.M	PART NUMBER	698B116-264-211		
	CHECK DATE	04/07/2026	MATERIAL	LCP	SIZE	A
	TOLERANCES	ALL DIMENSIONS AND TOLERANCES IN MM	SEE DRAWING 698B116-X64-211	REVISION	R2	
	.X ±0.25 .XX ±0.15 .XXX ±0.05	SCALE	5:1	SHEET	1	OF 2

THESE DRAWINGS AND SPECIFICATIONS ARE THE PROPERTY OF EDAC, AND SHALL NOT BE REPRODUCED, OR COPIED OR USED AS THE BASIS FOR THE MANUFACTURE OR SALE OF APPARATUS WITHOUT WRITTEN PERMISSION.



RECOMMENDED P.C.B LAYOUT  
TOLERANCE:  $\pm 0.05\text{mm}$   
SCALE 8:1



PIN CONFIGURATION			
PIN	SIGNAL NAME	PIN	SIGNAL NAME
A1	GND	B12	GND
A4	VBUS	B9	VBUS
A5	CC1	B8	SBU2
A6	DP1	B7	DN2
A7	DN1	B6	DP2
A8	SBU1	B5	CC2
A9	VBUS	B4	VBUS
A12	GND	B1	GND

	DRAWN BY	C.B	690 SERIES RECEPTACLE USB TYPE-C 16 PIN OPTION					
	DRAWN DATE	12/22/2020						
	CHECKED BY	R.S.M	PART NUMBER	698B116-264-211				
	CHECK DATE	04/07/2026						
RoHS COMPLIANT	THESE DRAWINGS AND SPECIFICATIONS ARE THE PROPERTY OF EDAC, AND SHALL NOT BE REPRODUCED, OR COPIED OR USED AS THE BASIS FOR THE MANUFACTURE OR SALE OF APPARATUS WITHOUT WRITTEN PERMISSION.	TOLERANCES		ALL DIMENSIONS AND TOLERANCES IN MM	MATERIAL	LCP	SIZE	A
		.X	$\pm 0.25$		SEE DRAWING 698B116-X64-211	REVISION		
		.XX	$\pm 0.15$			R2		
		.XXX	$\pm 0.05$			SCALE	5:1	SHEET