



161 Alden Road, Units 7 & 8, Markham, Ontario Canada L3R 3W7
 Tel: +1 416 754-3322 Fax: +1 416-754-3299
 Email: support@edac.net http://www.edac.net
ENGINEERING CHANGE NOTICE

Originator:	Wenyu Qin	Date:	Document Number
Phone No.	416-754-3322	April 29, 2026	ECN20260429-00
Email Address:	wqin@edacgroup.net	Revision Number	SHEET
Department	Quality	1	3

CHANGE TYPE:

- CLASS I Customer notification and approval required prior to implementation
- CLASS II Customer notification only, no approval required
- CLASS III No customer notification required

REASON OF CHANGE

Specification added

DESCRIPTION OF CHANGE:

Part 368-220-301 will be revised to add dimensions for the locating holes.

For detailed change information, please refer to Pages 2.

IMPLEMENTATION: Running Change

PARTIES AFFECTED

- Customer
- Distributors
- Suppliers
- NORCOMP
- MH
- ETW
- ECA
- EDG
- EDAC UK

KEY TARGET DUE DATES IF CHANGE IS APPROVED TO PROCEED (check if applicable and show target dates as known)

- Submit Quote _____
- Prod. Trial Run _____
- Run at Rate _____
- PPAP from Supplier _____
- MRD of Production Parts _____
- UL / CSA / RoHS / REACH _____

ACKNOWLEDGEMENT FOR ECN INITIATION: (OPTIONALS)

- Tooling Rep _____
- Mfg Eng Rep _____
- Production Rep _____
- Materials Rep _____
- Quality Rep Wenyu Qin
- Marketing Rep Marco Lamanna
- Facilities Rep _____
- Sales Rep Esther Marothy
- Product Eng. Rep. _____
- Purchasing Rep _____

STATUS

APPROVED
 CCS CHANGE REQUEST # _____

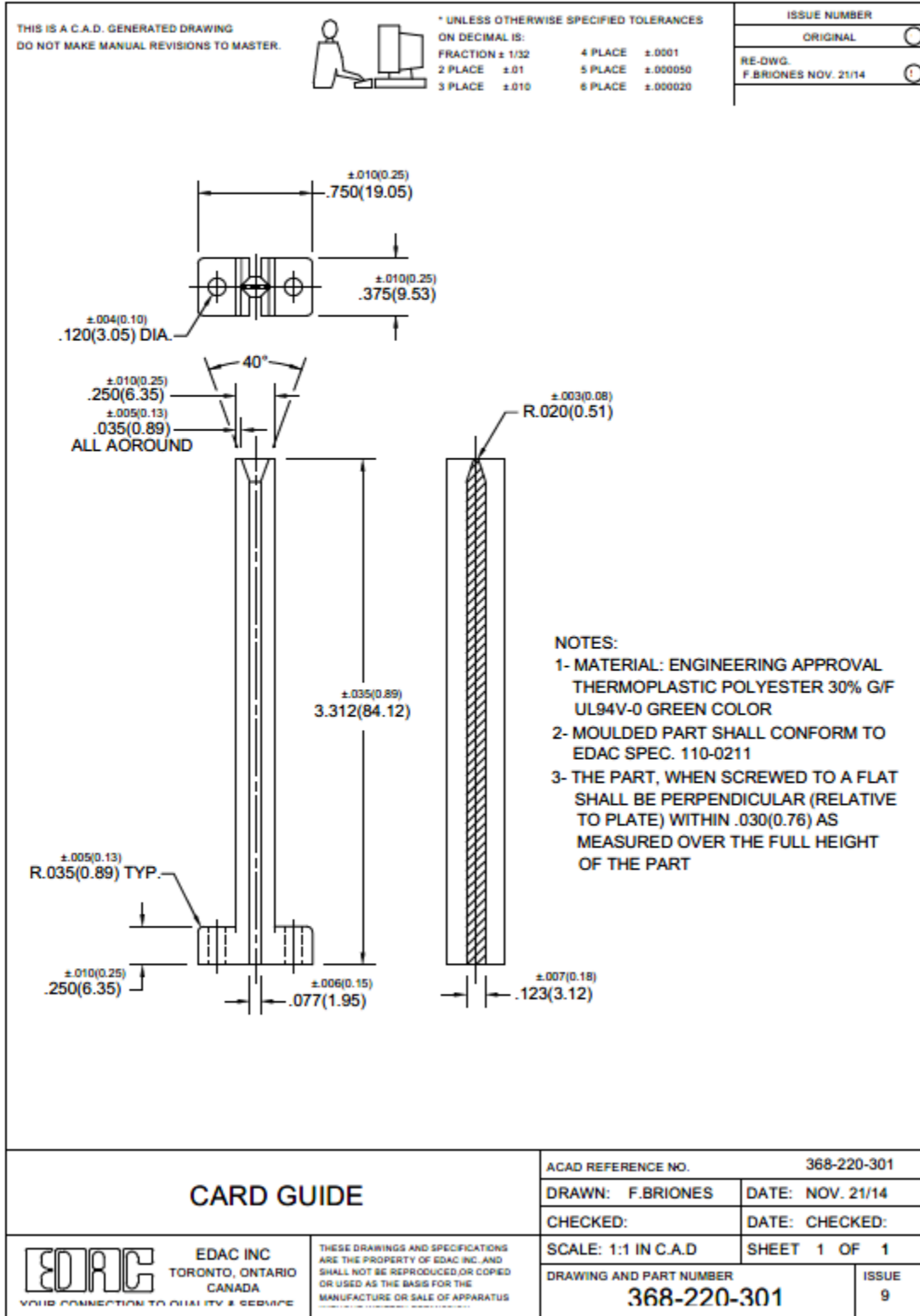
APPROVALS FOR ECN INITIATION (REQUIRED)

- General Manager**
 - Engineering Manager**
 - Business Development Manager**
 - Quality Engineer**
 - Engineer**
- Wenyu Qin
 Ronnie Sta. Monica *R. Sta. Monica*
 Jerico Sta. Monica *Jerico Sta. Monica*
 Kobie Samuels *K.S. 5/13/26*

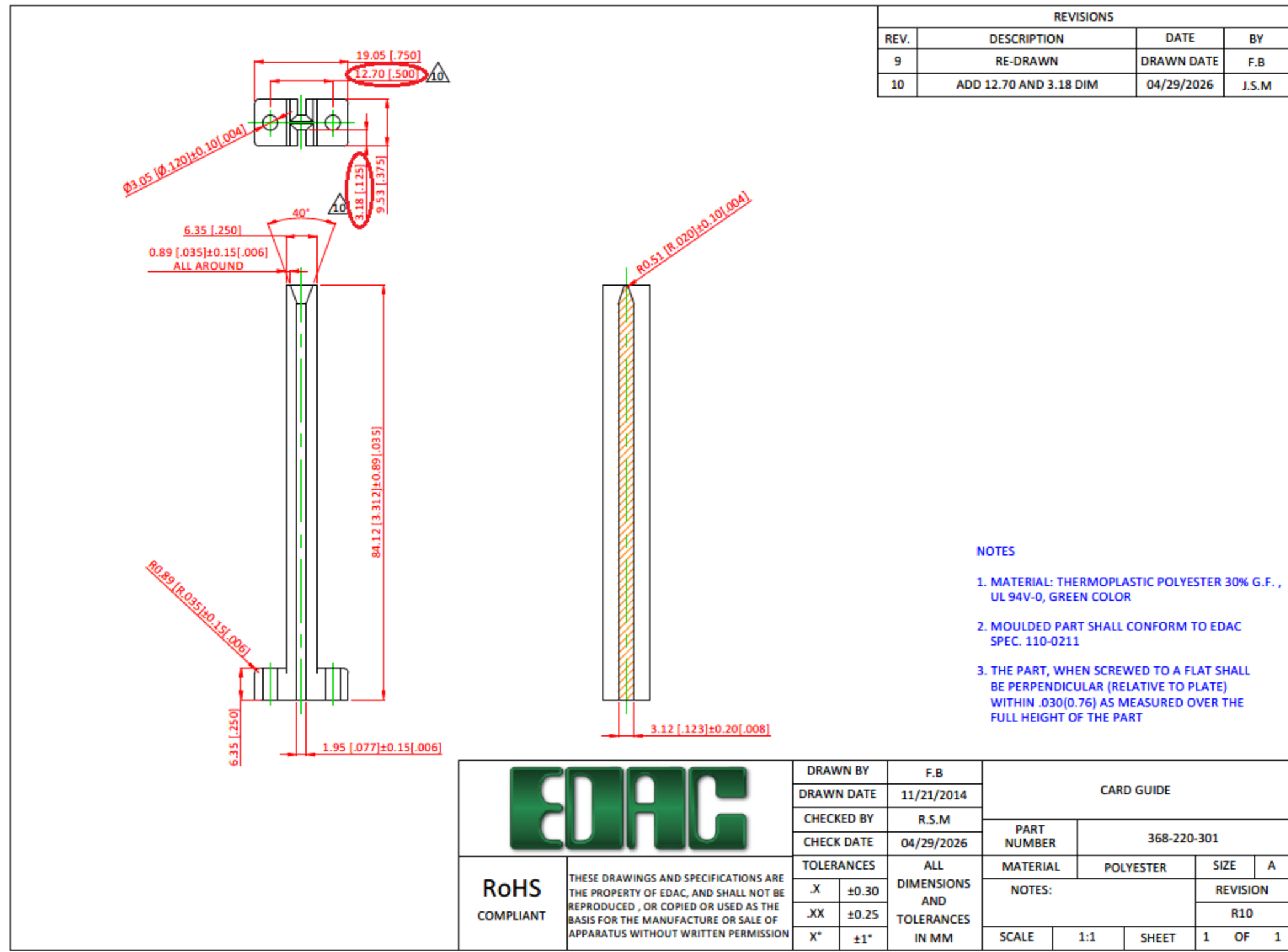
REJECTED

Change REJECTED by: _____
 Rejected Date: _____

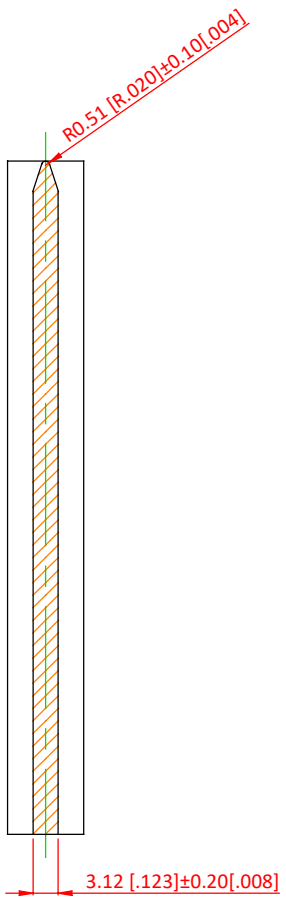
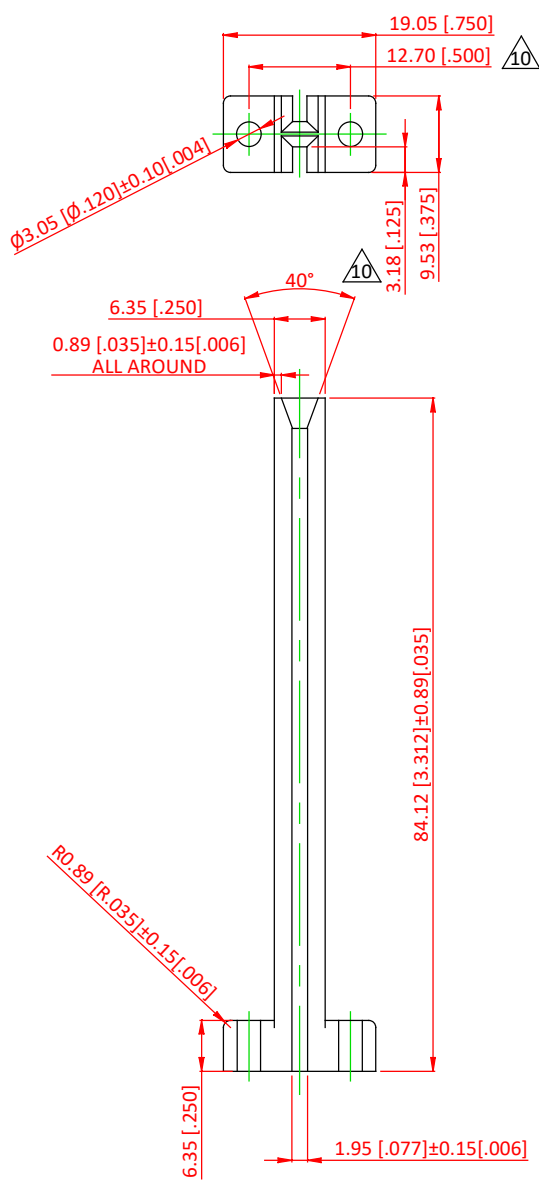
R1



R2



REVISIONS			
REV.	DESCRIPTION	DATE	BY
9	RE-DRAWN	DRAWN DATE	F.B
10	ADD 12.70 AND 3.18 DIM	04/29/2026	J.S.M



NOTES

1. MATERIAL: THERMOPLASTIC POLYESTER 30% G.F. , UL 94V-0, GREEN COLOR
2. MOULDED PART SHALL CONFORM TO EDAC SPEC. 110-0211
3. THE PART, WHEN SCREWED TO A FLAT SHALL BE PERPENDICULAR (RELATIVE TO PLATE) WITHIN .030(0.76) AS MEASURED OVER THE FULL HEIGHT OF THE PART

	DRAWN BY	F.B	CARD GUIDE				
	DRAWN DATE	11/21/2014					
	CHECKED BY	R.S.M					
	CHECK DATE	04/29/2026	PART NUMBER	368-220-301			
RoHS COMPLIANT	TOLERANCES		ALL DIMENSIONS AND TOLERANCES IN MM	MATERIAL	POLYESTER	SIZE	A
	.X	±0.30		NOTES:		REVISION	
	.XX	±0.25				R10	
	X°	±1°		SCALE	1:1	SHEET	1