



161 Alden Road, Units 7 & 8, Markham, Ontario Canada L3R 3W7
 Tel: +1 416 754-3322 Fax: +1 416-754-3299
 Email: support@edac.net http://www.edac.net
ENGINEERING CHANGE NOTICE

Originator:	Wenyu Qin	Date:	Document Number
Phone No.	416-754-3322	May 8, 2026	ECN20260508-00
Email Address:	wqin@edacgroup.net	Revision Number	SHEET
Department	Quality	1	3

CHANGE TYPE:

- CLASS I Customer notification and approval required prior to implementation
- CLASS II Customer notification only, no approval required
- CLASS III No customer notification required

REASON OF CHANGE

Specification Update

DESCRIPTION OF CHANGE:

The part 685Q02212011C1E will be revised as follows:
 1. Update the PCB layout dimensions.
 2. Update the gold plating thickness in the contact plating specification.

For detailed change information, please refer to Pages 2.

IMPLEMENTATION: Running Change

PARTIES AFFECTED

- Customer
- Distributors
- Suppliers
- NORCOMP
- MH
- ETW
- ECA
- EDG
- EDAC UK

KEY TARGET DUE DATES IF CHANGE IS APPROVED TO PROCEED (check if applicable and show target dates as known)

<input type="checkbox"/> Submit Quote	_____	<input type="checkbox"/> PPAP from Supplier	_____
<input type="checkbox"/> Prod. Trial Run	_____	<input type="checkbox"/> MRD of Production Parts	_____
<input type="checkbox"/> Run at Rate	_____	<input type="checkbox"/> UL / CSA / RoHS / REACH	_____

ACKNOWLEDGEMENT FOR ECN INITIATION: (OPTIONALS)

<input type="checkbox"/> Tooling Rep	_____	<input checked="" type="checkbox"/> Marketing Rep	<u>Marco Lamanna</u>
<input type="checkbox"/> Mfg Eng Rep	_____	<input type="checkbox"/> Facilities Rep	_____
<input type="checkbox"/> Production Rep	_____	<input checked="" type="checkbox"/> Sales Rep.	<u>Esther Marothy</u>
<input type="checkbox"/> Materials Rep	_____	<input type="checkbox"/> Product Eng. Rep.	_____
<input checked="" type="checkbox"/> Quality Rep	<u>Wenyu Qin</u>	<input type="checkbox"/> Purchasing Rep	_____

STATUS

APPROVED
 CCS CHANGE REQUEST #

APPROVALS FOR ECN INITIATION (REQUIRED)

<input checked="" type="checkbox"/> General Manager	<u>Wenyu Qin</u>	<input checked="" type="checkbox"/> Quality Engineer	<u>Wenyu Qin</u>
<input checked="" type="checkbox"/> Engineering Manager	<u>Ronnie Sta Monica</u>	<input checked="" type="checkbox"/> Engineer	<u>Jerico Sta. Monica</u>
<input checked="" type="checkbox"/> Business Development Manager	<u>Kobie Samuels</u>		

K. Samuels
5/20/20

REJECTED

Change REJECTED by:
 Rejected Date:

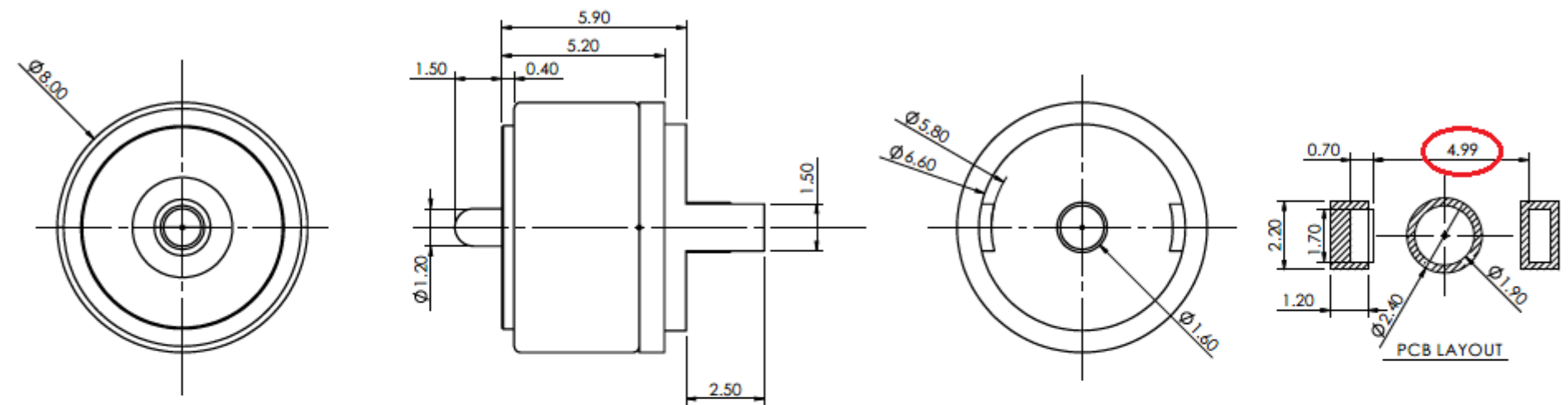
R3

TOLERANCE UNLESS OTHERWISE SPECIFIED	
.X	±0.15
.XX	±0.10

THIS IS A C.A.D. GENERATED DRAWING
DO NOT MAKE MANUAL REVISIONS TO MASTER.



ISSUE NUMBER	
ORIGINAL	①
UPDATE SPECIFICATIONS J.L. FEB.20/2023	②
ADD NOTE 9 & 10	
P.M. AUG. 11/2023	③



- SPECIFICATION:**
- MATERIAL:**
CONTACT: BRASS, GOLD FLASH PLATING ALL OVER NICKEL UNDERPLATING
HOUSING : PA46, BLACK
MAGNET: NS2
 - ELECTRICAL:**
RATED VOLTAGE (PER CONTACT): 12V
RATED CURRENT (PER CONTACT): 2A
INSULATION RESISTANCE: 100MEGAOHMS MIN.
DIELECTRIC WITHSTAND VOLTAGE: 100V AT 60Hz
CONTACT RESISTANCE: 30mOHMS MAX. BEFORE TEST AND 60mOHMS MAX. AFTER TEST
 - RECOMMENDED WORKING STROKE & FORCE:** STROKE 1.1MM (PER CONTACT) 80gf±20gf
 - MECHANICAL LIFE:** 10,000 CYCLES MIN.
 - WORKING TEMPERATURE RANGE:** -30~+85°C.
 - MAGNET GAUSE VALUE:** 2400±200GS
 - WATERPROOF RATING:** IP53
 - SALT SPRAY TEST:** 48H, PASSED

9- RECOMMENDED SOLDERING PROCESS ARE SELECTIVE SOLDERING OR MANUAL SOLDERING. OTHER FORMS OF SOLDERING SUCH AS WAVE SOLDER OR REFLOW SOLDER ARE NOT RECOMMENDED AND CAN POTENTIALLY CAUSE DEMAGNETIZATION OF MAGNET IN THE CONNECTOR

10- MATING WITH: 686Q02212001C1E

MAGNETIC SPRING LOADED CONNECTOR, 1 POS, MALE		ACAD REFERENCE NO.: 685Q02212011C1E	UNIT: MM
		DRAWN: J.L.	DATE: 2023-02-07
EDAC INC TORONTO, ONTARIO CANADA YOUR CONNECTION TO QUALITY & SERVICE		CHECKED: R.S.M	DATE: 8/11/2023
		SCALE: (IN CAD 1:1)	SHEET 1 OF 1
THIS SERIES FULLY CONFORMS TO THE EUROPEAN UNION DIRECTIVES 2011/65/EU FOR RoHS COMPLIANCY.		DRAWING NUMBER: 685Q02212011C1E	ISSUE
		PART NUMBER: 685Q02212011C1E	3

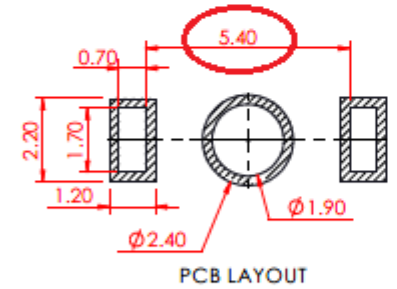
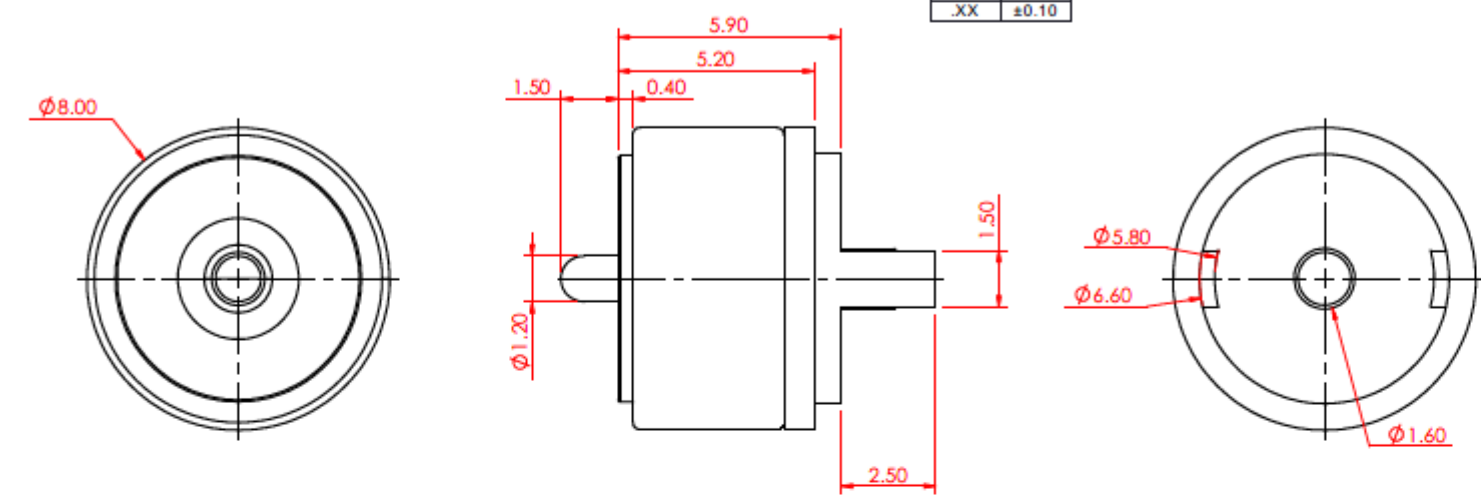
R4

TOLERANCE UNLESS OTHERWISE SPECIFIED	
.X	±0.15
.XX	±0.10

THIS IS A C.A.D. GENERATED DRAWING
DO NOT MAKE MANUAL REVISIONS TO MASTER.



ISSUE NUMBER	
ORIGINAL	①
UPDATE SPECIFICATIONS J.L. FEB.20/2023	②
ADD NOTE 9 & 10	
P.M. AUG. 11/2023	③
SPECIFICATIONS UPDATED	
V.K. MAR. 18/2024	④



- SPECIFICATIONS**
- | | |
|-------------------------------|-----------------|
| CONTACT MATERIAL: | BRASS |
| CONTACT PLATING: | GOLD PLATING 5µ |
| HOUSING MATERIAL: | PA46 |
| HOUSING COLOR: | BLACK |
| MAGNET MATERIAL: | NS2 |
| VOLTAGE RATING (PER CONTACT): | 12V |
| CURRENT RATING (PER CONTACT): | 2A |
| INSULATION RESISTANCE: | 100MΩ MIN. |
| WITHSTANDING VOLTAGE: | 100V AT 60HZ |
| OPERATING TEMPERATURE: | -30 °C TO 85 °C |
| WORKING STROKE: | 1.1 MM |
| STROKE FORCE (PER CONTACT): | 80 ± 20 GF |
| MATING LIFE CYCLE: | 10000 |
- MATES WITH: 686Q02212001C1E

RECOMMENDED SOLDERING PROCESS ARE SELECTIVE SOLDERING OR MANUAL SOLDERING. OTHER FORMS OF SOLDERING SUCH AS WAVE SOLDER OR REFLOW SOLDER ARE NOT RECOMMENDED AND CAN POTENTIALLY CAUSE DEMAGNETIZATION OF MAGNET IN THE CONNECTOR

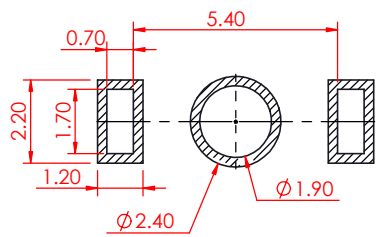
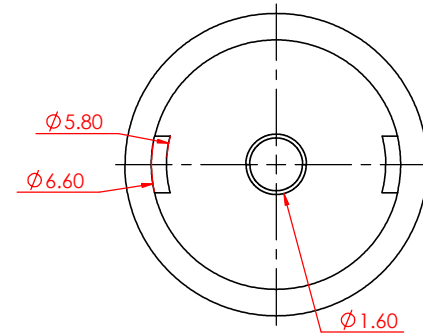
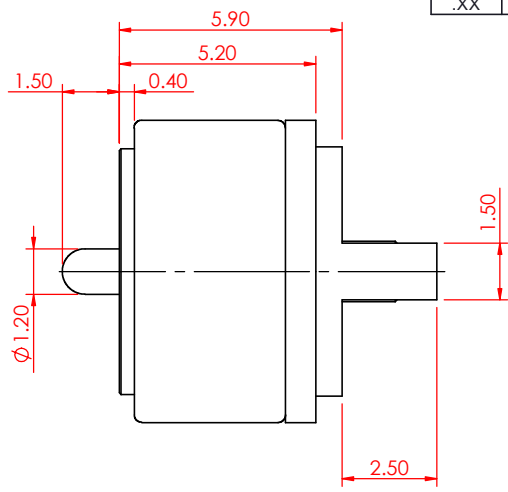
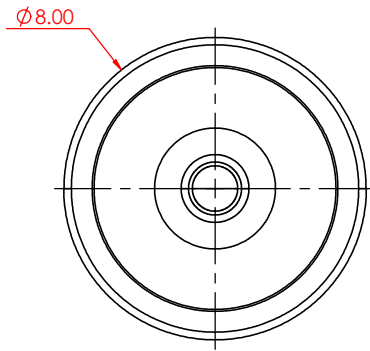
MAGNETIC SPRING LOADED CONNECTOR, 2 POS, MALE		ACAD REFERENCE NO.: 685Q02212011C1E	UNIT: MM
		DRAWN: J.L.	DATE: 3/13/2023
EDAC INC TORONTO, ONTARIO CANADA YOUR CONNECTION TO QUALITY & SERVICE		CHECKED: R.S.M	DATE: 6/28/2024
		SCALE: 5:1	SHEET 1 OF 1
THIS SERIES FULLY CONFORMS TO THE EUROPEAN UNION DIRECTIVES 2011/65/EU FOR RoHS COMPLIANCY.		DRAWING NUMBER: 685Q02212011C1E	ISSUE
		PART NUMBER: 685Q02212011C1E	4

TOLERANCE UNLESS OTHERWISE SPECIFIED	
.X	±0.15
.XX	±0.10

THIS IS A C.A.D. GENERATED DRAWING
DO NOT MAKE MANUAL REVISIONS TO MASTER.



ISSUE NUMBER	
ORIGINAL	①
UPDATE SPECIFICATIONS J.L. FEB.20/2023	②
ADD NOTE 9 & 10	
P.M. AUG. 11/2023	③
SPECIFICATIONS UPDATED	
V.K. MAR. 18/2024	④



PCB LAYOUT

SPECIFICATIONS

CONTACT MATERIAL:	BRASS
CONTACT PLATING:	GOLD PLATING 5µ"
HOUSING MATERIAL:	PA46
HOUSING COLOR:	BLACK
MAGNET MATERIAL:	N52
VOLTAGE RATING (PER CONTACT):	12V
CURRENT RATING (PER CONTACT):	2A
INSULATION RESISTANCE:	100MΩ MIN.
WITHSTANDING VOLTAGE:	100V AT 60HZ
OPERATING TEMPERATURE:	-30 °C TO 85 °C
WORKING STROKE:	1.1 MM
STROKE FORCE (PER CONTACT):	80 ± 20 GF
MATING LIFE CYCLE:	10000

MATES WITH: 686Q02212001C1E

RECOMMENDED SOLDERING PROCESS ARE SELECTIVE SOLDERING OR MANUAL SOLDERING. OTHER FORMS OF SOLDERING SUCH AS WAVE SOLDER OR REFLOW SOLDER ARE NOT RECOMMENDED AND CAN POTENTIALLY CAUSE DEMAGNETIZATION OF MAGNET IN THE CONNECTOR

MAGNETIC SPRING LOADED CONNECTOR, 2 POS, MALE		ACAD REFERENCE NO.:	685Q02212011C1E	UNIT:	MM
		DRAWN:	J.L.	DATE:	3/13/2023
CHECKED:	R.S.M	DATE:	6/28/2024		
SCALE:	5:1	SHEET	1	OF	1
DRAWING NUMBER:	685Q02212011C1E			ISSUE	4
PART NUMBER:	685Q02212011C1E				



THIS SERIES FULLY CONFORMS TO
THE EUROPEAN UNION DIRECTIVES
2011/65/EU FOR RoHS COMPLIANCY.



EDAC INC
TORONTO, ONTARIO
CANADA
YOUR CONNECTION TO QUALITY & SERVICE

THESE DRAWINGS AND SPECIFICATIONS
ARE THE PROPERTY OF EDAC INC., AND
SHALL NOT BE REPRODUCED, OR COPIED
OR USED AS THE BASIS FOR THE
MANUFACTURE OR SALE OF APPARATUS
WITHOUT WRITTEN PERMISSION.