



161 Alden Road, Units 7 & 8, Markham, Ontario Canada L3R 3W7
 Tel: +1 416 754-3322 Fax: +1 416-754-3299
 Email: support@edac.net http://www.edac.net
ENGINEERING CHANGE NOTICE

Originator:	Wenyu Qin	Date:	Document Number
Phone No.	416-754-3322	May 11, 2026	ECN20260511-00
Email Address:	wqin@edacgroup.net	Revision Number	SHEET
Department	Quality	1	8

CHANGE TYPE:

- CLASS I Customer notification and approval required prior to implementation
- CLASS II Customer notification only, no approval required
- CLASS III No customer notification required

REASON OF CHANGE

Specification update

DESCRIPTION OF CHANGE:

The following POGO part drawings are being updated due to specification updates:
 685C02212021C1E
 685L0421250110E
 686C02222030C1E
 686C0422250110E
 686L0421350120E
 686R0222200111E
 687C0222A001K00
 There are no form, fit, or function issues.
 For detailed change information, please refer to Pages 2 to 8.

IMPLEMENTATION: Running Change

PARTIES AFFECTED

- Customer
- Distributors
- Suppliers
- NORCOMP
- MH
- ETW
- ECA
- EDG
- EDAC UK

KEY TARGET DUE DATES IF CHANGE IS APPROVED TO PROCEED (check if applicable and show target dates as known)

<input type="checkbox"/> Submit Quote	_____	<input type="checkbox"/> PPAP from Supplier	_____
<input type="checkbox"/> Prod. Trial Run	_____	<input type="checkbox"/> MRD of Production Parts	_____
<input type="checkbox"/> Run at Rate	_____	<input type="checkbox"/> UL / CSA / RoHS / REACH	_____

ACKNOWLEDGEMENT FOR ECN INITIATION: (OPTIONALS)

<input type="checkbox"/> Tooling Rep	_____	<input checked="" type="checkbox"/> Marketing Rep	<u>Marco Lamanna</u>
<input type="checkbox"/> Mfg Eng Rep	_____	<input type="checkbox"/> Facilities Rep	_____
<input type="checkbox"/> Production Rep	_____	<input checked="" type="checkbox"/> Sales Rep	<u>Esther Marothy</u>
<input type="checkbox"/> Materials Rep	_____	<input type="checkbox"/> Product Eng. Rep.	_____
<input checked="" type="checkbox"/> Quality Rep	<u>Wenyu Qin</u>	<input type="checkbox"/> Purchasing Rep	_____

STATUS

APPROVED
 CCS CHANGE REQUEST # _____

APPROVALS FOR ECN INITIATION (REQUIRED)

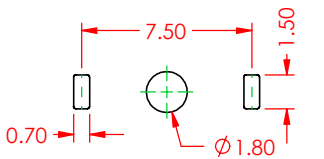
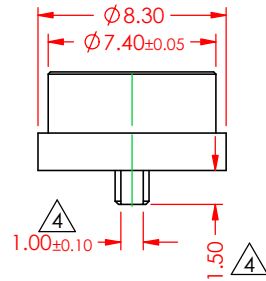
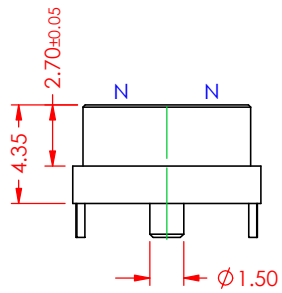
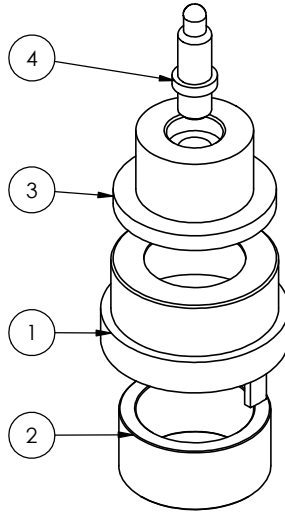
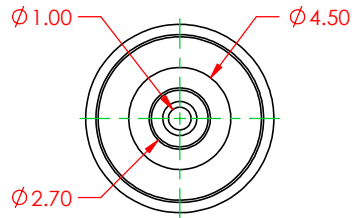
<input checked="" type="checkbox"/> <input type="checkbox"/>	General Manager	<input checked="" type="checkbox"/> <input type="checkbox"/>	Quality Engineer	Wenyu Qin <u>Wenyu Qin</u>
<input checked="" type="checkbox"/> <input type="checkbox"/>	Engineering Manager	<input checked="" type="checkbox"/> <input type="checkbox"/>	Engineer	Jerico Sta. Monica <u>Jerico Sta. Monica</u>
<input checked="" type="checkbox"/> <input type="checkbox"/>	Business Development Manager	<input checked="" type="checkbox"/> <input type="checkbox"/>		Kobie Samuels <u>K. Samuels</u> 5/13/26

REJECTED

Change REJECTED by: _____
 Rejected Date: _____

ITEM NO.	DESCRIPTION	QTY.
1	SHELL	1
2	MAGNET	1
3	HOUSING	1
4	POGO PIN	1

REVISIONS			
REV.	DESCRIPTION	DATE	BY
1	ORIGINAL	DRAWN DATE	
2	ADD NOTE 7 & 8	08/11/2023	P.M.
3	ADD 6.05, 2.70, DELETE 1.65	08/18/2023	L.K.
4	SPECIFICATIONS & DIMENSIONS UPDATED	2/4/2026	V.K.



RECOMMENDED PCB LAYOUT
TOLERANCE ±0.05

- SPECIFICATIONS**
- △ CURRENT RATING: 2A
 - △ VOLTAGE RATING: 12V
 - WITHSTANDING VOLTAGE: 500V
 - INSULATION RESISTANCE: 1000MΩ MIN FOR 1 MIN
 - CONTACT RESISTANCE: 50mΩ MAX
 - △ TEMPERATURE RANGE: -25°C TO 80°C
 - △ INSULATOR MATERIAL: PA9T
 - INSULATOR COLOR: BLACK
 - CONTACT MATERIAL: BRASS
 - △ CONTACT PLATING: 5μ" GOLD PLATING
 - MAGNET MATERIAL: N52
 - △ MATING CYCLES: 10000
- STROKE: 0.8 MM
CONTACT FORCE: 60±20 g

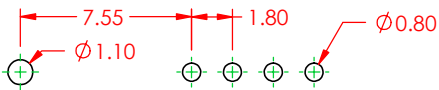
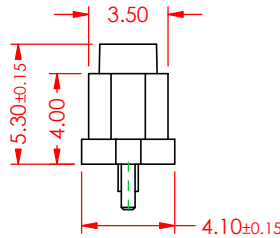
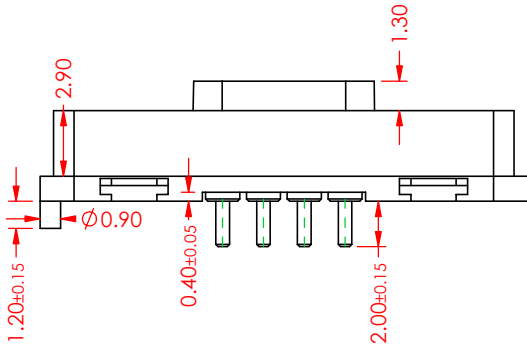
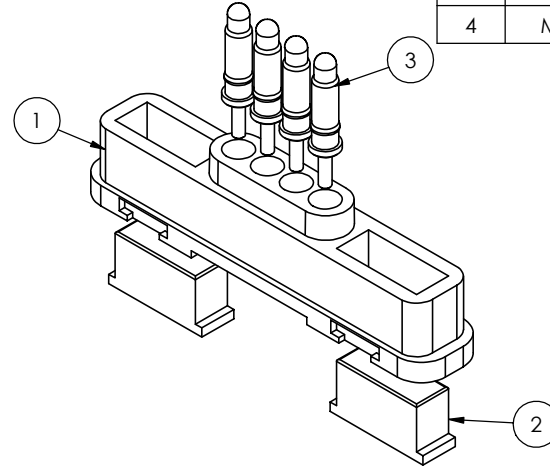
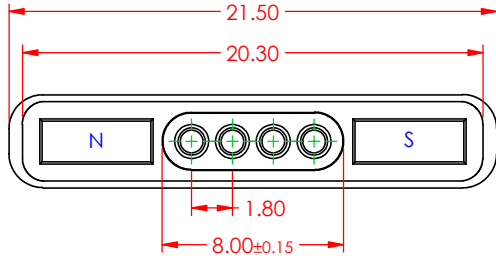
MATING PARTS: 686C02222030C1E

NOTE: IR REFLOW AND WAVE SOLDERING NOT RECOMMENDED AS THE PROCESSES CAN DEMAGNETIZE THE CONNECTOR MAGNETS.

	DRAWN BY	V.K.	FEMALE CONNECTOR, CIRCULAR, 8.3 MM DIA, 2 POSITIONS			
	DRAWN DATE	02/04/2026				
	CHECKED BY	R.S.M.	PART NUMBER	685C02212021C1E		
	CHECK DATE	02/04/2026				
RoHS COMPLIANT	TOLERANCES		ALL DIMENSIONS AND TOLERANCES IN MM	MATERIAL	SIZE	A
	.X	±0.3				
	.XX	±0.2		4		
	.XXX	±0.1				SCALE

ITEM NO.	DESCRIPTION	QTY.
1	HOUSING	1
2	MAGNET	2
3	POGO PIN	4

REVISIONS			
REV.	DESCRIPTION	DATE	BY
1	ORIGINAL	DRAWN DATE	
2	ADD NOTE 4 AND 5	08/13/2023	P.M.
3	DELETE DIM 7.50, Ø1.20, Ø0.50(X4) & DELETE NOTE 3	08/18/2023	L.K.
4	MATERIAL, TEMP RANGE, VOLTAGE & PLATING UPDATED	2/2/2026	V.K.



RECOMMENDED PCB LAYOUT
TOLERANCE ±0.05

SPECIFICATIONS

- ⚠ CURRENT RATING: 2A
- ⚠ VOLTAGE RATING: 12V
- WITHSTANDING VOLTAGE: 500V
- INSULATION RESISTANCE: 1000MΩ MIN FOR 1 MIN
- ⚠ CONTACT RESISTANCE: 50mΩ MAX
- ⚠ TEMPERATURE RANGE: -25°C TO 80°C
- ⚠ INSULATOR MATERIAL: HTN
- INSULATOR COLOR: BLACK
- CONTACT MATERIAL: BRASS
- ⚠ CONTACT PLATING: 5μ" GOLD PLATING
- MAGNET MATERIAL: N52
- MATING CYCLES: 10000

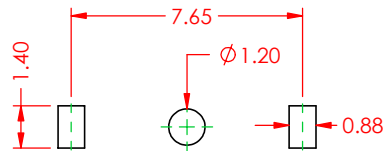
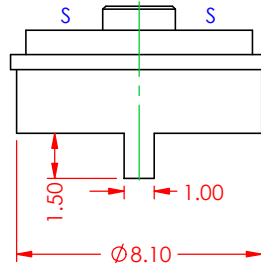
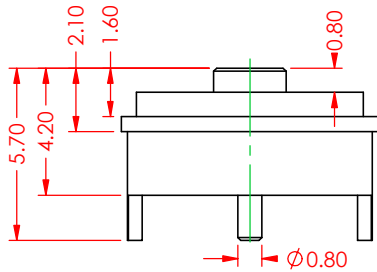
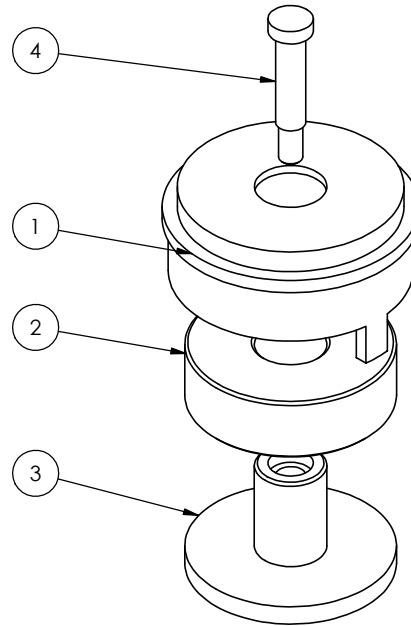
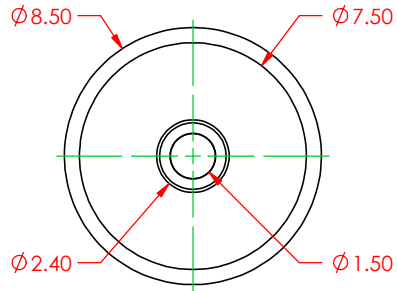
MATING PARTS: 685L0421250110E
687L0421A501200

NOTE: IR REFLOW AND WAVE SOLDERING NOT RECOMMENDED AS THE PROCESSES CAN DEMAGNETIZE THE CONNECTOR MAGNETS.

	DRAWN BY	J.L.	MALE CONNECTOR, RECTANGULAR, 1.8MM PITCH, 4 POSITIONS			
	DRAWN DATE	05/16/2023				
	CHECKED BY	R.S.M.	PART NUMBER	685L0421250110E		
	CHECK DATE	05/16/2023				
RoHS COMPLIANT	TOLERANCES		ALL DIMENSIONS AND TOLERANCES IN MM	MATERIAL	SIZE	A
	.X	±0.3				
	.XX	±0.2		4		
	.XXX	±0.1				SCALE

THESE DRAWINGS AND SPECIFICATIONS ARE THE PROPERTY OF EDAC, AND SHALL NOT BE REPRODUCED, OR COPIED OR USED AS THE BASIS FOR THE MANUFACTURE OR SALE OF APPARATUS WITHOUT WRITTEN PERMISSION.

ITEM NO.	DESCRIPTION	QTY.
1	SHELL	1
2	MAGNET	1
3	INSULATOR	1
4	POGO PIN	1



RECOMMENDED PCB LAYOUT
TOLERANCE ±0.05

REVISIONS			
REV.	DESCRIPTION	DATE	BY
1	ORIGINAL	DRAWN DATE	
2	ADD NOTE 4 AND 5	8/10/2023	P.M.
3	REVISE NOTE 1 AND REMOVE DIM 0.48, 3.6 AND 4.5	08/18/2023	L.K.
4	TEMP RANGE, INSULATOR MATERIAL & PLATING UPDATED	3/16/2026	V.K.

SPECIFICATIONS

CURRENT RATING:	2A
VOLTAGE RATING:	12V
WITHSTANDING VOLTAGE:	500V
INSULATION RESISTANCE:	1000MΩ MIN FOR 1 MIN
CONTACT RESISTANCE:	50mΩ MAX
TEMPERATURE RANGE:	-25 °C TO 80 °C
4 INSULATOR MATERIAL:	PA9T
INSULATOR COLOR:	BLACK
CONTACT MATERIAL:	BRASS
4 CONTACT PLATING:	5μ" GOLD PLATING
MAGNET MATERIAL:	N52
MATING CYCLES:	10000

MATING PARTS: 685C02212021C1E
687C0222A001K00

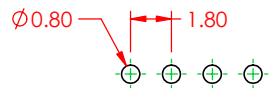
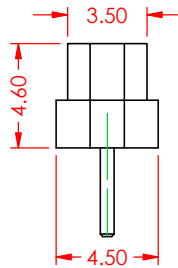
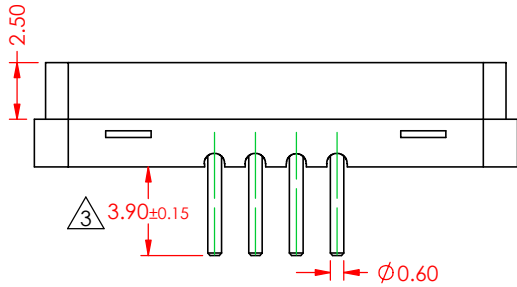
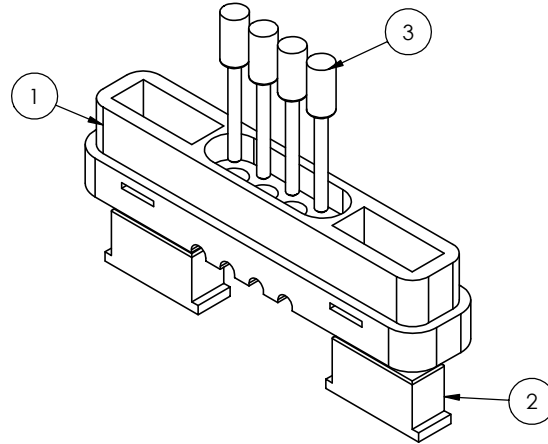
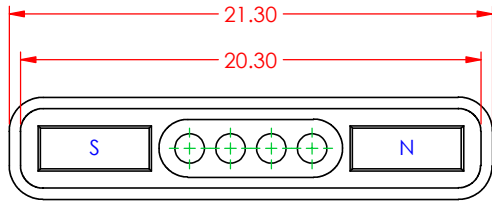
NOTE: IR REFLOW AND WAVE SOLDERING NOT RECOMMENDED AS THE PROCESSES CAN DEMAGNETIZE THE CONNECTOR MAGNETS.

	DRAWN BY	V.K.	FEMALE CONNECTOR, CIRCULAR, 8.5 MM DIA, 2 POSITIONS				
	DRAWN DATE	03/13/2026					
	CHECKED BY	R.S.M.	PART NUMBER	686C02222030C1E			
	CHECK DATE	03/13/2026	MATERIAL			SIZE	A
RoHS COMPLIANT	TOLERANCES		ALL DIMENSIONS AND TOLERANCES IN MM	REVISION		4	
	.X	±0.3					
	.XX	±0.2					
		.XXX	±0.1	SCALE	4:1	SHEET	1 OF 1

THESE DRAWINGS AND SPECIFICATIONS ARE THE PROPERTY OF EDAC, AND SHALL NOT BE REPRODUCED, OR COPIED OR USED AS THE BASIS FOR THE MANUFACTURE OR SALE OF APPARATUS WITHOUT WRITTEN PERMISSION.

ITEM NO.	DESCRIPTION	QTY.
1	HOUSING	1
2	MAGNET	2
3	POGO PIN	4

REVISIONS			
REV.	DESCRIPTION	DATE	BY
1	ORIGINAL	DRAWN DATE	
2	ADD NOTE 6 AND 7	08/12/2023	P.M.
3	TAIL LENGTH CHANGED TO 3.9. MATERIAL & PLATING UPDATED	1/30/2026	V.K.



RECOMMENDED PCB LAYOUT
TOLERANCE ±0.05

- SPECIFICATIONS**
- CURRENT RATING: 2A
 - VOLTAGE RATING: 12V
 - WITHSTANDING VOLTAGE: 500V
 - INSULATION RESISTANCE: 1000MΩ MIN FOR 1 MIN
 - CONTACT RESISTANCE: 50mΩ MAX
 - TEMPERATURE RANGE: -25°C TO 80°C
- ⚠️ INSULATOR MATERIAL: HTN
 - INSULATOR COLOR: BLACK
 - CONTACT MATERIAL: BRASS
 - ⚠️ CONTACT PLATING: 5μ" GOLD PLATING
 - MAGNET MATERIAL: N52
 - MATING CYCLES: 10000

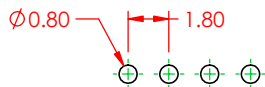
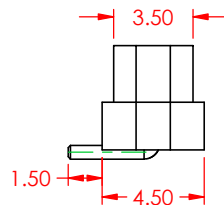
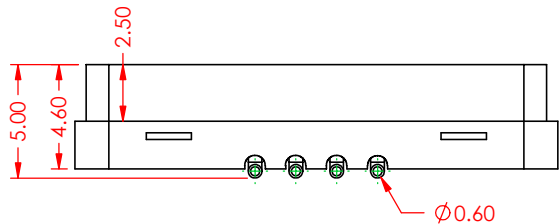
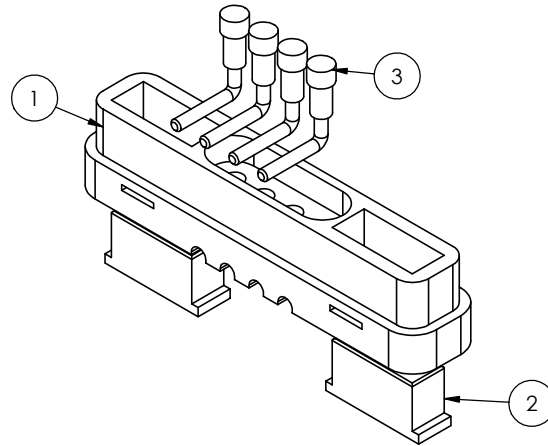
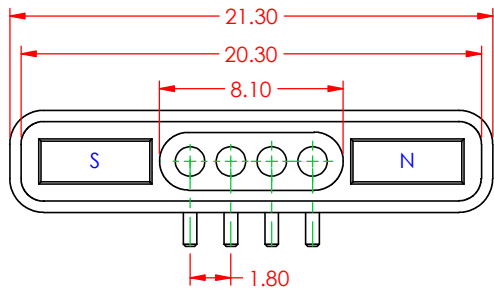
MATING PARTS: 685L0421250110E
687L0421A501200

NOTE: IR REFLOW AND WAVE SOLDERING NOT RECOMMENDED AS THE PROCESSES CAN DEMAGNETIZE THE CONNECTOR MAGNETS.

	DRAWN BY	J.L.	FEMALE CONNECTOR, RECTANGULAR, 1.8MM PITCH, 4 POSITIONS				
	DRAWN DATE	05/16/2023					
	CHECKED BY	R.S.M.	PART NUMBER	686C0422250110E			
	CHECK DATE	05/16/2023					
RoHS COMPLIANT	TOLERANCES		ALL DIMENSIONS AND TOLERANCES IN MM	MATERIAL	SIZE	A	
	.X	±0.3					REVISION
	.XX	±0.2		3			
	.XXX	±0.1		SCALE	3:1	SHEET	1

ITEM NO.	DESCRIPTION	QTY.
1	HOUSING	1
2	MAGNET	2
3	POGO PIN	4

REVISIONS			
REV.	DESCRIPTION	DATE	BY
1	ORIGINAL	DRAWN DATE	
2	ADD NOTE 5 AND 6	08/12/2023	P.M.
3	REVISE NOTE 2, DELETE DIM R1.70, Ø1.10, R1.20	08/18/2023	L.K.
4	PLATING, MATERIAL AND TEMP RANGE UPDATED	2/2/2026	V.K.



RECOMMENDED PCB LAYOUT
TOLERANCE ±0.05

SPECIFICATIONS

CURRENT RATING: 2A
 VOLTAGE RATING: 12V
 WITHSTANDING VOLTAGE: 500V
 INSULATION RESISTANCE: 1000MΩ MIN FOR 1 MIN
 CONTACT RESISTANCE: 50mΩ MAX
 TEMPERATURE RANGE: -25 °C TO 80 °C

- ⚠️ INSULATOR MATERIAL: HTN
- INSULATOR COLOR: BLACK
- CONTACT MATERIAL: BRASS
- ⚠️ CONTACT PLATING: 5μ" GOLD PLATING
- MAGNET MATERIAL: N52
- MATING CYCLES: 10000

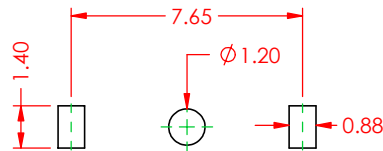
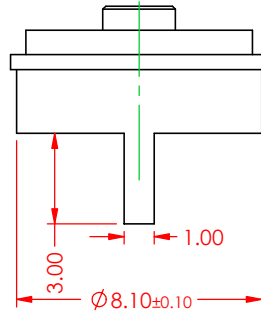
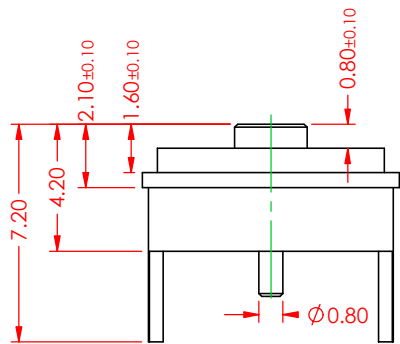
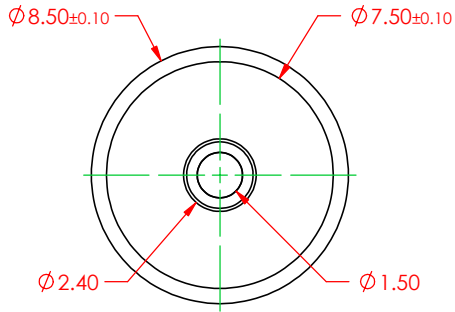
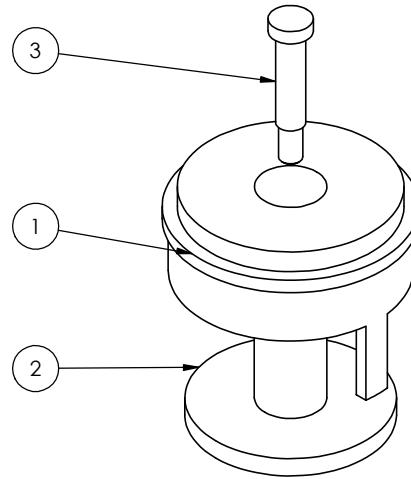
MATING PARTS: 685L0421250110E
687L0421A501200

NOTE: IR REFLOW AND WAVE SOLDERING NOT RECOMMENDED AS THE PROCESSES CAN DEMAGNETIZE THE CONNECTOR MAGNETS.

	DRAWN BY	J.L.	FEMALE CONNECTOR, RECTANGULAR, 1.8MM PITCH, 4 POSITIONS, RIGHT ANGLE				
	DRAWN DATE	05/16/2023					
	CHECKED BY	R.S.M.	PART NUMBER	686L0421350120E			
	CHECK DATE	05/16/2023					
RoHS COMPLIANT	TOLERANCES		ALL DIMENSIONS AND TOLERANCES IN MM	MATERIAL	SIZE	A	
	.X	±0.3					REVISION
	.XX	±0.2		4			
	.XXX	±0.1				SCALE	3:1

THESE DRAWINGS AND SPECIFICATIONS ARE THE PROPERTY OF EDAC, AND SHALL NOT BE REPRODUCED, OR COPIED OR USED AS THE BASIS FOR THE MANUFACTURE OR SALE OF APPARATUS WITHOUT WRITTEN PERMISSION.

ITEM NO.	DESCRIPTION	QTY.
1	SHELL	1
2	INSULATOR	1
3	POGO PIN	1



RECOMMENDED PCB LAYOUT
TOLERANCE ± 0.05

REVISIONS			
REV.	DESCRIPTION	DATE	BY
1	ORIGINAL	DRAWN DATE	
2	UPDATED DESCRIPTION	5/21/2025	J.S.M.
3	UPDATED SECTION VIEW	11/27/2025	J.S.M.
4	TEMP RANGE, & PLATING UPDATED	4/8/2026	V.K.

SPECIFICATIONS
 CURRENT RATING: 2A
 VOLTAGE RATING: 12V
 WITHSTANDING VOLTAGE: 500V
 INSULATION RESISTANCE: 1000M Ω MIN FOR 1 MIN
 CONTACT RESISTANCE: 50m Ω MAX
 TEMPERATURE RANGE: -25°C TO 80°C



INSULATOR MATERIAL: PA9T
 INSULATOR COLOR: BLACK
 CONTACT MATERIAL: BRASS
 CONTACT PLATING: 5 μ " GOLD PLATING
 MAGNET MATERIAL: N52
 MATING CYCLES: 10000



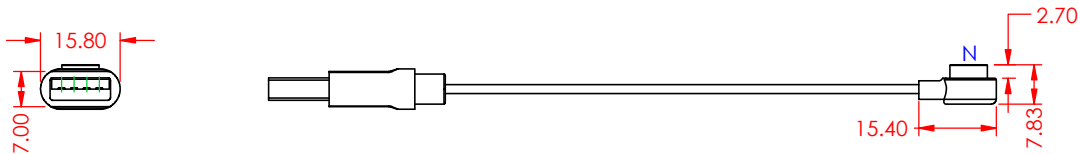
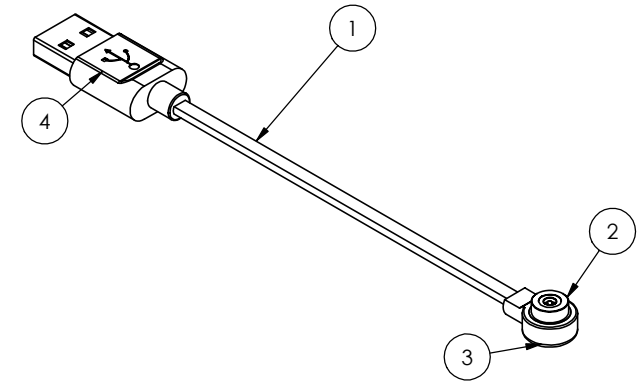
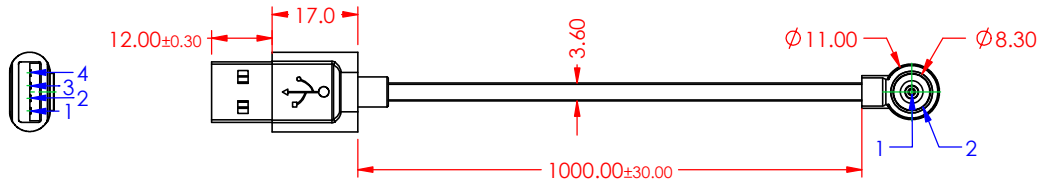
MATING PARTS: 687R00222001200

NOTE: IR REFLOW AND WAVE SOLDERING NOT RECOMMENDED AS THE PROCESSES CAN DEMAGNETIZE THE CONNECTOR MAGNETS.

	DRAWN BY	J.S.M.	FEMALE CONNECTOR, CIRCULAR, 8.5 MM DIA, 2 POSITIONS						
	DRAWN DATE	05/13/2025							
	CHECKED BY	V.K.	PART NUMBER	686R0222200111E					
	CHECK DATE	05/14/2025	MATERIAL		SIZE	A			
RoHS COMPLIANT	THESE DRAWINGS AND SPECIFICATIONS ARE THE PROPERTY OF EDAC, AND SHALL NOT BE REPRODUCED, OR COPIED OR USED AS THE BASIS FOR THE MANUFACTURE OR SALE OF APPARATUS WITHOUT WRITTEN PERMISSION.		TOLERANCES	ALL DIMENSIONS AND TOLERANCES IN MM	REVISION 4				
			.X				± 0.3		
			.XX		± 0.2				
		.XXX	± 0.1	SCALE	4:1	SHEET	1	OF	1

ITEM NO.	DESCRIPTION	QTY.
1	WIRE	1
2	MALE CONNECTOR	1
3	OVERMOLDING	1
4	USB A-2.0	1

REVISIONS			
REV.	DESCRIPTION	DATE	BY
1	ORIGINAL	DRAWN DATE	
2	ADD NOTE 6	08/10/2023	P.M.
3	DIM R5.5 WAS 5.4, 2.7 ±0.2 WAS 2.75 ±0.2, 15.4 WAS 15.49	08/18/2023	L.K.
4	VOLTAGE RATING, TEMP RANGE, PLATING UPDATED	4/8/2026	V.K.



- SPECIFICATIONS**
- ⚠ CURRENT RATING: 2A
 - ⚠ VOLTAGE RATING: 12V
 - WITHSTANDING VOLTAGE: 500V
 - INSULATION RESISTANCE: 1000MΩ MIN FOR 1 MIN
 - CONTACT RESISTANCE: 50mΩ MAX
 - ⚠ TEMPERATURE RANGE: -20 °C TO 60 °C

- INSULATOR MATERIAL: HTN
- INSULATOR COLOR: BLACK
- CONTACT MATERIAL: BRASS
- ⚠ CONTACT PLATING: 5μ" GOLD PLATING
- MAGNET MATERIAL: N52
- MATING CYCLES: 10000

- STROKE: 0.8 MM
- CONTACT FORCE: 60±20 g

- MATING PARTS: 686C02222030C1E

CABLE SPECIFICATIONS

- CABLE MATERIAL: PVC
- CABLE COLOR: BLACK
- OVERMOLDING MATERIAL: TPE
- OVERMOLDING COLOR: BLACK
- OPPOSITE END: USB A-2.0

POGO PIN	WIRE COLOR	USB PIN NO.	SIGNAL
1	NATURAL	1	VCC
-	-	2	-
-	-	3	-
2	GREEN	4	GND

NOTE: IR REFLOW AND WAVE SOLDERING NOT RECOMMENDED AS THE PROCESSES CAN DEMAGNETIZE THE CONNECTOR MAGNETS.

	DRAWN BY	V.K.	MALE CABLE ASSEMBLY, CIRCULAR, 11.0 MM DIA, 2 POSITIONS				
	DRAWN DATE	03/16/2026					
	CHECKED BY	R.S.M.	PART NUMBER	687C0222A001K00			
	CHECK DATE	03/17/2026					
RoHS COMPLIANT	TOLERANCES		ALL DIMENSIONS AND TOLERANCES IN MM	MATERIAL	SIZE	A	
	.X	±0.5					REVISION
	.XX	±0.2		4			
	.XXX	±0.1		SCALE	1:1.5	SHEET	1

THESE DRAWINGS AND SPECIFICATIONS ARE THE PROPERTY OF EDAC, AND SHALL NOT BE REPRODUCED, OR COPIED OR USED AS THE BASIS FOR THE MANUFACTURE OR SALE OF APPARATUS WITHOUT WRITTEN PERMISSION.