



161 Alden Road, Units 7 & 8, Markham, Ontario Canada L3R 3W7  
 Tel: +1 416 754-3322 Fax: +1 416-754-3299  
 Email: support@edac.net http://www.edac.net  
**ENGINEERING CHANGE NOTICE**

Originator:	Wenyu Qin	Date:	Document Number
Phone No.	416-754-3322	May 27, 2026	ECN20260527-00
Email Address:	<a href="mailto:wqin@edacgroup.net">wqin@edacgroup.net</a>		
Department	Quality	Revision Number	SHEET
		1	1

**CHANGE TYPE:**

- CLASS I Customer notification and approval required prior to implementation
- CLASS II Customer notification only, no approval required
- CLASS III No customer notification required

**REASON OF CHANGE**

Specification update

**DESCRIPTION OF CHANGE:**

The drawings for 14K-292-421 are being updated due to specification changes.  
 For detailed change information, please refer to Pages 2.

IMPLEMENTATION: Running Change

**PARTIES AFFECTED**

- Customer
- Distributors
- Suppliers
- NORCOMP
- MH
- ETW
- ECA
- EDG
- EDAC UK

**KEY TARGET DUE DATES IF CHANGE IS APPROVED TO PROCEED** (check if applicable and show target dates as known)

- Submit Quote \_\_\_\_\_
- Prod. Trial Run \_\_\_\_\_
- Run at Rate \_\_\_\_\_
- PPAP from Supplier \_\_\_\_\_
- MRD of Production Parts \_\_\_\_\_
- UL / CSA / RoHS / REACH \_\_\_\_\_

**ACKNOWLEDGEMENT FOR ECN INITIATION: (OPTIONALS)**

- Tooling Rep \_\_\_\_\_
- Mfg Eng Rep \_\_\_\_\_
- Production Rep \_\_\_\_\_
- Materials Rep \_\_\_\_\_
- Quality Rep Wenyu Qin
- Marketing Rep Marco Lamanna
- Facilities Rep \_\_\_\_\_
- Sales Rep. Esther Marothy
- Product Eng. Rep. \_\_\_\_\_
- Purchasing Rep \_\_\_\_\_

**STATUS**

APPROVED   
 CCS CHANGE REQUEST #

**APPROVALS FOR ECN INITIATION (REQUIRED)**

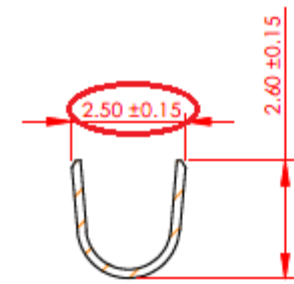
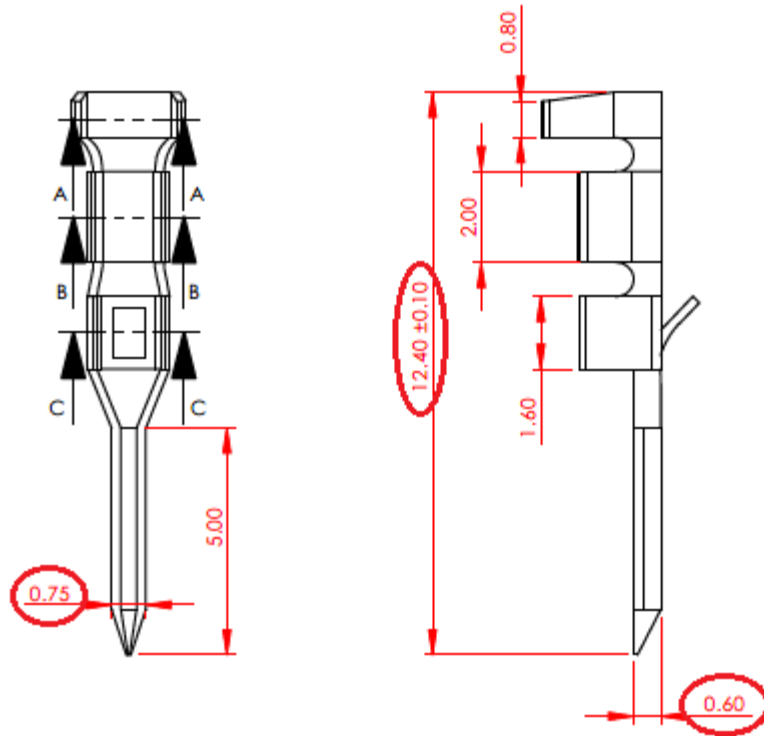
- General Manager \_\_\_\_\_
  - Engineering Manager Ronnie Sta Monica
  - Business Development Manager Kobie Samuels
  - Quality Engineer Wenyu Qin
  - Engineer Jerico Sta. Monica
- K. Samuels 6/2/26*

**REJECTED**

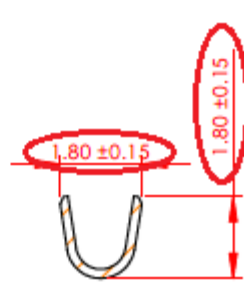
Change REJECTED by:  
 Rejected Date:

# R1

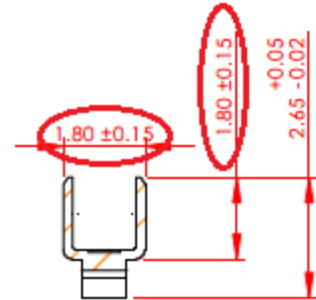
# R2



SECTION A-A  
SCALE 6 : 1



SECTION B-B  
SCALE 6 : 1



SECTION C-C  
SCALE 6 : 1

REVISIONS			
REV.	DESCRIPTION	DATE	BY
1	ORIGINAL	DRAWN DATE	

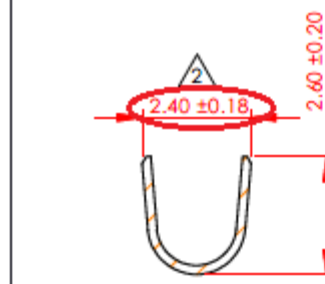
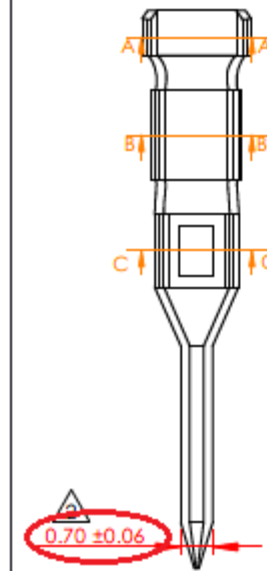
**SPECIFICATIONS**  
 VOLTAGE RATING: 250V AC/DC  
 CURRENT RATING: 3A AC/DC  
 WITHSTANDING VOLTAGE: 1000VAC/MIN  
 TEMPERATURE RANGE: -40°C TO 105°C  
 INSULATION RESISTANCE: 1000MΩ MIN  
 CONTACT RESISTANCE: 20mΩ MAX  
 INSULATION OD: 2.8MM (MAX)

**MATERIAL**  
 PLATING: PHOSPOR BRONZE  
 TIN-PLATED  
 WIRE RANGE: 24-30 AWG

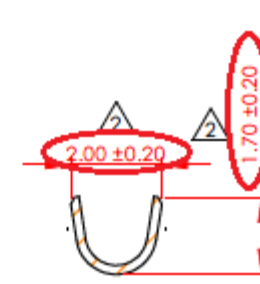
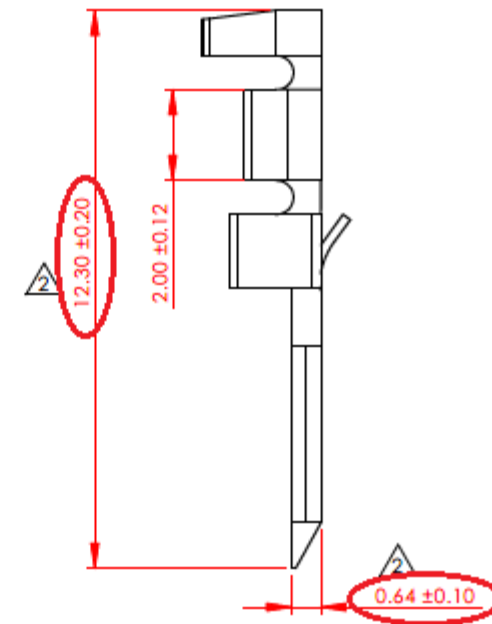
**USE WITH HOUSING:** 14K-5XX-210-AA1  
**MATES WITH CONTACT:** 14K-292-452

**PACKAGING:** REEL (10K/REEL)

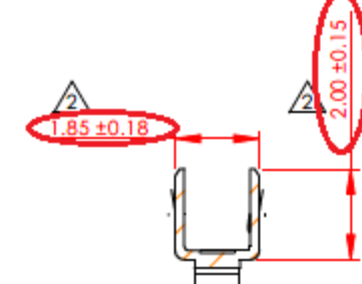
<b>EDAC</b>	DRAWN BY	V.K	14K SERIES PIN CONTACT, 2.50 PITCH				
	DRAWN DATE	02/20/24					
	CHECKED BY	R.S.M.	PART NUMBER	14K-292-421			
	CHECK DATE	02/21/24	MATERIAL	SIZE	A		
RoHS COMPLIANT	THESE DRAWINGS AND SPECIFICATIONS ARE THE PROPERTY OF EDAC, AND SHALL NOT BE REPRODUCED, OR COPIED OR USED AS THE BASIS FOR THE MANUFACTURE OR SALE OF APPARATUS WITHOUT WRITTEN PERMISSION.	TOLERANCES	ALL DIMENSIONS AND TOLERANCES IN MM				
		.X	±0.3	NOTES:			
		.XX	±0.2				
		.XXX	±0.1				
SCALE	5:1	SHEET	1	OF	1		



SECTION A-A  
SCALE 6 : 1



SECTION B-B  
SCALE 6 : 1



SECTION C-C  
SCALE 6 : 1

REVISIONS			
REV.	DESCRIPTION	DATE	BY
1	ORIGINAL	DRAWN DATE	V.K
2	0.7 WAS 0.75, 12.3 WAS 12.4, 0.64 WAS 0.6, 2.4 WAS 2.5, 2.0 WAS 1.8, 1.7 WAS 1.8, 1.85 WAS 1.80, 2.0 WAS 1.8	05/26/2026	J.S.M

**SPECIFICATIONS**  
 VOLTAGE RATING: 250V AC/DC  
 CURRENT RATING: 3A AC/DC  
 WITHSTANDING VOLTAGE: 1000VAC/MINUTE  
 TEMPERATURE RANGE: -40°C TO 105°C  
 INSULATION RESISTANCE: 1000MΩ MIN.  
 CONTACT RESISTANCE: 20mΩ MAX.  
 INSULATION OD: 1.30MM (MAX.)

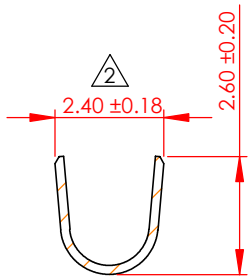
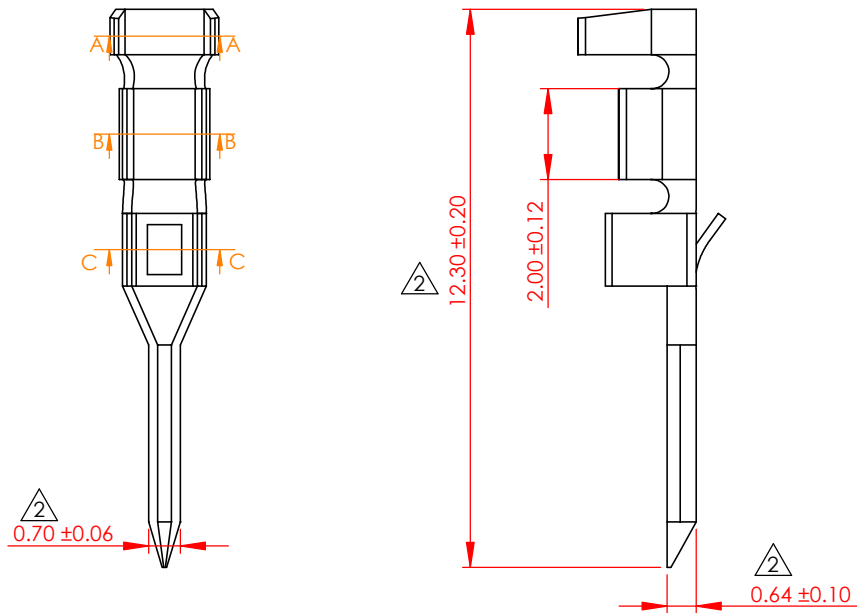
**MATERIAL**  
 PLATING: PHOSPOR BRONZE  
 TIN-PLATED  
 WIRE RANGE: 24-30 AWG

**USE WITH HOUSING:** 14K-5XX-210-AA1  
**MATES WITH CONTACT:** 14K-292-452

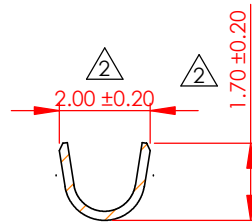
**PACKAGING:** REEL (10K/REEL)

<b>EDAC</b>	DRAWN BY	V.K	14K SERIES PIN CONTACT, 2.50 PITCH				
	DRAWN DATE	02/20/24					
	CHECKED BY	R.S.M.	PART NUMBER	14K-292-421			
	CHECK DATE	05/26/24	MATERIAL	PHOSPOR BRONZE	SIZE	A	
RoHS COMPLIANT	THESE DRAWINGS AND SPECIFICATIONS ARE THE PROPERTY OF EDAC, AND SHALL NOT BE REPRODUCED, OR COPIED OR USED AS THE BASIS FOR THE MANUFACTURE OR SALE OF APPARATUS WITHOUT WRITTEN PERMISSION.	TOLERANCES	ALL DIMENSIONS AND TOLERANCES IN MM				
		.X	±0.3	NOTES:			
		.XX	±0.2				
		.XXX	±0.1				
SCALE	5:1	SHEET	1	OF	1		

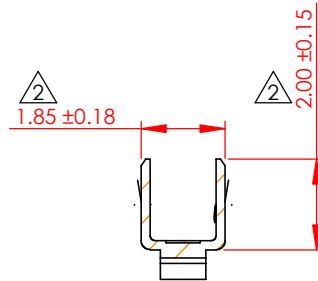
REVISIONS			
REV.	DESCRIPTION	DATE	BY
1	ORIGINAL	DRAWN DATE	V.K
2	0.7 WAS 0.75, 12.3 WAS 12.4, 0.64 WAS 0.6, 2.4 WAS 2.5, 2.0 WAS 1.8, 1.7 WAS 1.8, 1.85 WAS 1.80, 2.0 WAS 1.8	05/26/2026	J.S.M



SECTION A-A  
SCALE 6 : 1



SECTION B-B  
SCALE 6 : 1



SECTION C-C  
SCALE 6 : 1

**SPECIFICATIONS**  
**VOLTAGE RATING:** 250V AC/DC  
**CURRENT RATING:** 3A AC/DC  
**WITHSTANDING VOLTAGE:** 1000VAC/MINUTE  
**TEMPERATURE RANGE:** -40 °C TO 105 °C  
**INSULATION RESISTANCE:** 1000MΩ MIN.  
**CONTACT RESISTANCE:** 20mΩ MAX.  
**INSULATION OD:** 1.30MM (MAX.)

**MATERIAL:** PHOSPOR BRONZE  
**PLATING:** TIN-PLATED  
**WIRE RANGE:** 24-30 AWG

**USE WITH HOUSING:** 14K-5XX-210-AA1  
**MATES WITH CONTACT:** 14K-292-452

**PACKAGING:** REEL (10K/REEL)



RoHS  
COMPLIANT

THESE DRAWINGS AND SPECIFICATIONS ARE THE PROPERTY OF EDAC, AND SHALL NOT BE REPRODUCED, OR COPIED OR USED AS THE BASIS FOR THE MANUFACTURE OR SALE OF APPARATUS WITHOUT WRITTEN PERMISSION.

DRAWN BY	V.K	14K SERIES PIN CONTACT, 2.50 PITCH			
DRAWN DATE	02/20/24				
CHECKED BY	R.S.M.				
CHECK DATE	05/26/24	PART NUMBER	14K-292-421		
TOLERANCES	ALL DIMENSIONS AND TOLERANCES IN MM	MATERIAL	PHOSPHOR BRONZE	SIZE	A
.X		NOTES:			REVISION
.XX					R2
.XXX	SCALE	5:1	SHEET	1	OF 1