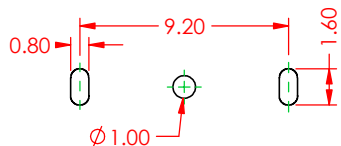
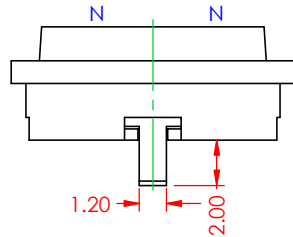
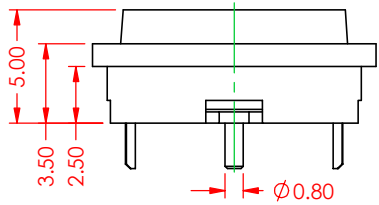
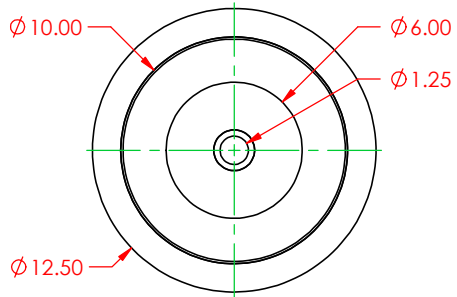
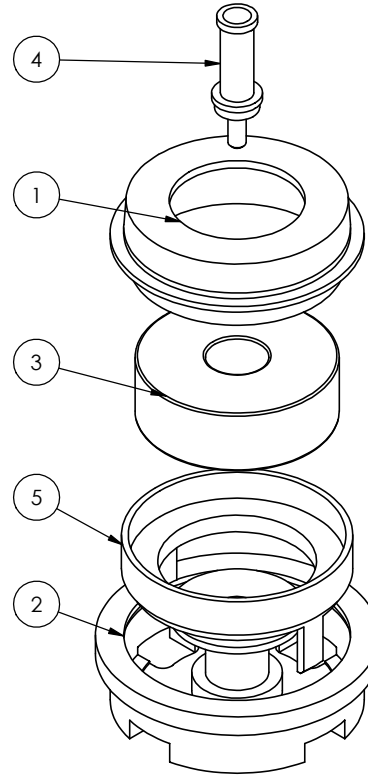


ITEM NO.	DESCRIPTION	QTY.
1	METALLIC SHELL TOP	1
2	INSULATOR	1
3	MAGNET	1
4	POGO PIN	1
5	METALLIC SHELL, BOTTOM	1

REVISIONS			
REV.	DESCRIPTION	DATE	BY
1	ORIGINAL	DRAWN DATE	



RECOMMENDED PCB LAYOUT  
TOLERANCE ±0.05



**SPECIFICATIONS**  
 CURRENT RATING: 3A  
 VOLTAGE RATING: 15V  
 WITHSTANDING VOLTAGE: 500V  
 INSULATION RESISTANCE: 1000MΩ MIN FOR 1 MIN  
 CONTACT RESISTANCE: 50mΩ MAX  
 TEMPERATURE RANGE: -25°C TO 80°C

INSULATOR MATERIAL: HTN  
 INSULATOR COLOR: BLACK  
 CONTACT MATERIAL: BRASS  
 CONTACT PLATING: 5μ" GOLD PLATING  
 MAGNET MATERIAL: N48  
 MATING CYCLES: 10000

MATING PARTS: MPM-V00-1F2-2P15-E00  
 MCM-Y00-2L2-2P15-BH0

NOTE: IR REFLOW AND WAVE SOLDERING NOT RECOMMENDED AS THE PROCESSES CAN DEMAGNETIZE THE CONNECTOR MAGNETS.

	DRAWN BY	V.K.	FEMALE CONNECTOR, CIRCULAR, 12.5 MM DIA, 2 POSITIONS			
	DRAWN DATE	09/05/2025				
	CHECKED BY	R.S.M.	PART NUMBER	MPF-V00-1F2-2R15-E00		
	CHECK DATE	09/05/2025	MATERIAL		SIZE	A
RoHS COMPLIANT	TOLERANCES .X ±0.3 .XX ±0.2 .XXX ±0.1		ALL DIMENSIONS AND TOLERANCES IN MM		REVISION	
					1	
					SCALE	3.5:1

THESE DRAWINGS AND SPECIFICATIONS ARE THE PROPERTY OF EDAC, AND SHALL NOT BE REPRODUCED, OR COPIED OR USED AS THE BASIS FOR THE MANUFACTURE OR SALE OF APPARATUS WITHOUT WRITTEN PERMISSION.