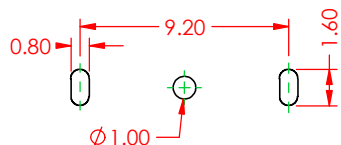
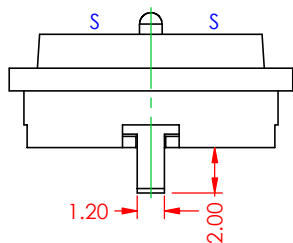
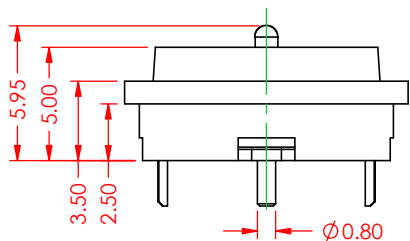
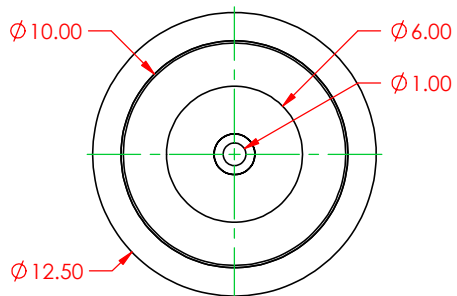
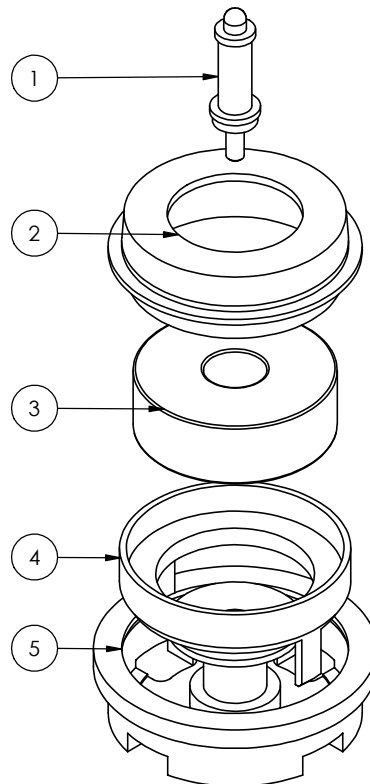


ITEM NO.	DESCRIPTION	QTY.
1	POGO PIN	1
2	METALLIC SHELL TOP	1
3	MAGNET	1
4	METALLIC SHELL, BOTTOM	1
5	INSULATOR	1

REVISIONS			
REV.	DESCRIPTION	DATE	BY
1	ORIGINAL	DRAWN DATE	



RECOMMENDED PCB LAYOUT
TOLERANCE ±0.05

SPECIFICATIONS

CURRENT RATING: 3A
 VOLTAGE RATING: 15V
 WITHSTANDING VOLTAGE: 500V
 INSULATION RESISTANCE: 1000MΩ MIN FOR 1 MIN
 CONTACT RESISTANCE: 50mΩ MAX
 TEMPERATURE RANGE: -25°C TO 80°C

INSULATOR MATERIAL: HTN
 INSULATOR COLOR: BLACK
 CONTACT MATERIAL: BRASS
 CONTACT PLATING: 5μ" GOLD PLATING
 MAGNET MATERIAL: N48
 MATING CYCLES: 10000

STROKE: 0.8 MM
 CONTACT FORCE: 80±20 g

MATING PARTS: MPF-V00-1F2-2R15-E00
 MPF-V00-1F2-2R15-E10

NOTE: IR REFLOW AND WAVE SOLDERING NOT RECOMMENDED AS THE PROCESSES CAN DEMAGNETIZE THE CONNECTOR MAGNETS.

	DRAWN BY	V.K.	MALE CONNECTOR, CIRCULAR, 12.5 MM DIA, 2 POSITIONS			
	DRAWN DATE	09/05/2025				
	CHECKED BY	R.S.M.	PART NUMBER	MPM-V00-1F2-2P15-E00		
	CHECK DATE	09/05/2025	MATERIAL		SIZE	A
RoHS COMPLIANT	TOLERANCES		ALL DIMENSIONS AND TOLERANCES IN MM	REVISION		
	.X	±0.3		1		
	.XX	±0.2				
	.XXX	±0.1	SCALE	3.5:1	SHEET	1 OF 1

THESE DRAWINGS AND SPECIFICATIONS ARE THE PROPERTY OF EDAC, AND SHALL NOT BE REPRODUCED, OR COPIED OR USED AS THE BASIS FOR THE MANUFACTURE OR SALE OF APPARATUS WITHOUT WRITTEN PERMISSION.