

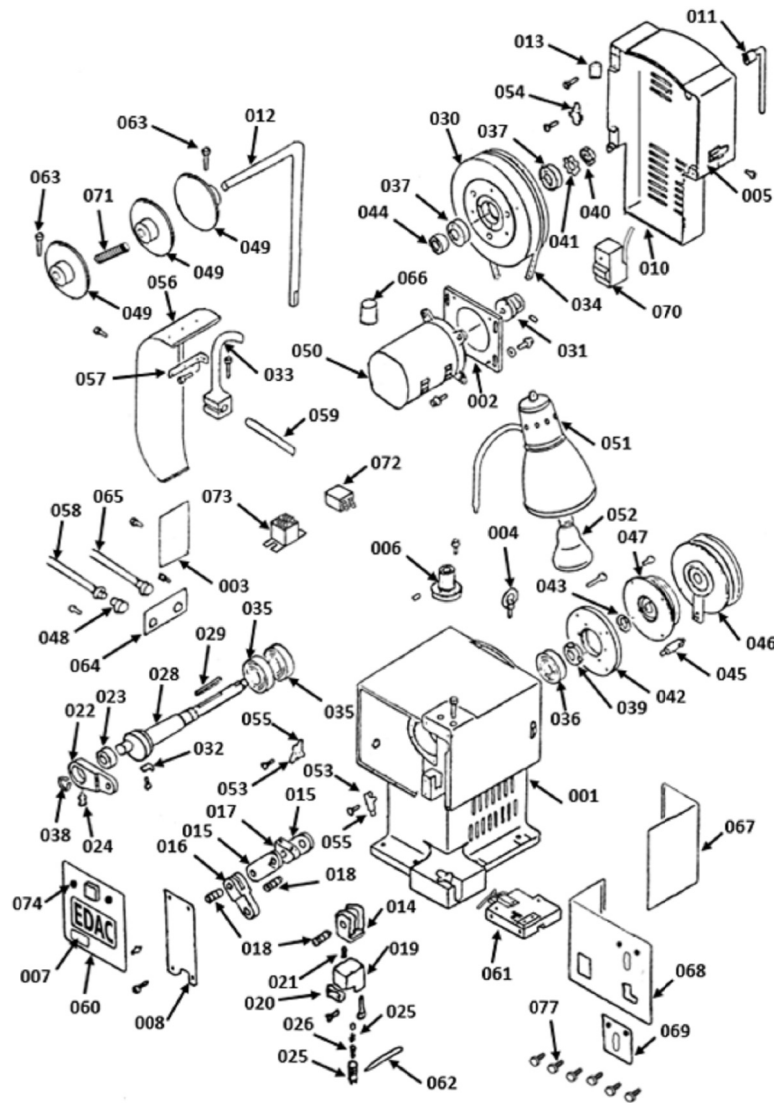
THIS IS A C.A.D. GENERATED DRAWING
DO NOT MAKE MANUAL REVISIONS TO MASTER.



ISSUE NUMBER

ORIGINAL

①



NOTES:

- 1- THIS CRIMPING MACHINE IS DESIGNED TO BE USED WITH EDAC APPLICATORS
- 2- FOR SETUP AND OPERATING INSTRUCTION, PLEASE REFER TO DOCUMENT "CRIMPING PRESS MANUAL R3.7".
- 3- REFER TO SHEET 2 FOR LIST OF REPLACEMENT PARTS.

P/N: 516-281-100-XXX

EDAC CRIMPING MACHINE		ACAD REFERENCE NO. 516-280-700	
		DRAWN: K.L.	DATE: NOV.24/2020
EDAC INC TORONTO, ONTARIO CANADA YOUR CONNECTION TO QUALITY & SERVICE		CHECKED:	DATE:
		SCALE: N.T.S.	SHEET 1 OF 2
THESE DRAWINGS AND SPECIFICATIONS ARE THE PROPERTY OF EDAC INC. AND SHALL NOT BE REPRODUCED, OR COPIED OR USED AS THE BASIS FOR THE MANUFACTURE OR SALE OF APPARATUS WITHOUT WRITTEN PERMISSION.		DRAWING NUMBER	
		516-280-700	
		ISSUE 1	

THIS IS A C.A.D. GENERATED DRAWING
DO NOT MAKE MANUAL REVISIONS TO MASTER.



ISSUE NUMBER
SEE SHEET 1

NO.	DESCRIPTION
001	MAIN FRAME
002	MOTOR MOUNTING PLATE
003	CONTROL PWB
004	HOISTING RING
005	LATCH FOR REAR COVER
006	REAL HOLDER
007	COUNTER
008	WEAR PLATE
009	GREASE NIPPLE
010	REAR COVER
011	HAND CRANK
012	REAL SUPPORT ROD
013	REAL COVER HINGE
014	RAM CLEVIS
015	PIVOT ARM
016	INTERMEDIATE CLEVIS
017	PIVOT ARM SUPPORT
018	BEARING PIN
019	RAM
020	ADJUSTING SCREW CLAMP
021	DOWEL PIN
022	CRANK ARM
023	CRANK ARM BEARING
024	GREASE NIPPLE
025	RAM ADJUSTING SCREW
026	DETENT PIN
027	DETENT SPRING
028	CRANK SHAFT
029	CRANK SHAFT KEY
030	FLY WHEEL
031	PULLEY
032	SENSOR PLATE
033	CONTACT STRIP GUIDE SUPPORT

034	BELT
035	CRANK SHAFT BEARING
036	CRANK SHAFT BEARING
037	FLY WHEEL BEARING
038	CRANK SHAFT RETAINING RING
039	CRANK SHAFT NUT
040	FLY WHEEL NUT
041	LOCK WASHER
042	BRAKE MOUNTING PLATE
043	SPACER
044	SPACER
045	CLUTCH ANCHOR PIN
046	CLUTCH
047	BRAKE
048	FOOT SWITCH SOCKET
049	CONTACT REEL CLAMP DISK
050	ELECTRIC MOTOR
051	LAMP (NOT SHOWN)
052	BULB
053	PHOTOELECTRIC SENSOR
054	PROXIMITY SWITCH
055	SENSOR BRAKE
056	CONTACT GUIDE PLATE
057	GUIDE PLATE BRACKET
058	FOOT SWITCH ASSEMBLY
059	GUIDE PLATE SUPPORT ROD
060	FRONT COVER
061	APPLICATOR LOCKING ASSEMBLY
062	ROD FOR RAM HEIGHT ADJUST.
063	CLAMP DISK LOCK SCREW
064	SIDE PLATE, ELECTRICAL
065	LINE CORD
066	MOTOR CAPACITOR
067	REAR GUARD

068	FRONT GUARD
069	ADJUSTER GUARD
070	REAR COVER MICRO SWITCH
071	CLAMP DISK SPRING
072	SMALL RELAY
073	LARGE RELAY
074	FUSE HOLDER
075	POWER SWITCH
076	MOTOR START BUTTON
077	GUARD THUMBSCREW (6)

EDAC CRIMPING MACHINE

ACAD REFERENCE NO. 516-280-700

DRAWN: K.L.

DATE: NOV.24/2020

CHECKED:

DATE:

SCALE: N.T.S.

SHEET 2 OF 2

DRAWING NUMBER

516-280-700

ISSUE

1



EDAC INC
TORONTO, ONTARIO
CANADA

YOUR CONNECTION TO QUALITY & SERVICE

THESE DRAWINGS AND SPECIFICATIONS
ARE THE PROPERTY OF EDAC INC., AND
SHALL NOT BE REPRODUCED, OR COPIED
OR USED AS THE BASIS FOR THE
MANUFACTURE OR SALE OF APPARATUS
WITHOUT WRITTEN PERMISSION.