

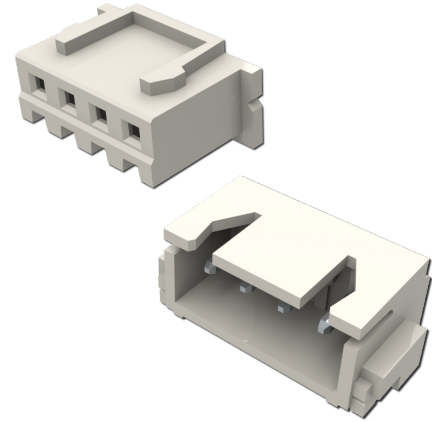
14K Series



Wire-to-Board/Wire-to-Wire Connectors .098" (2.50mm) Pitch

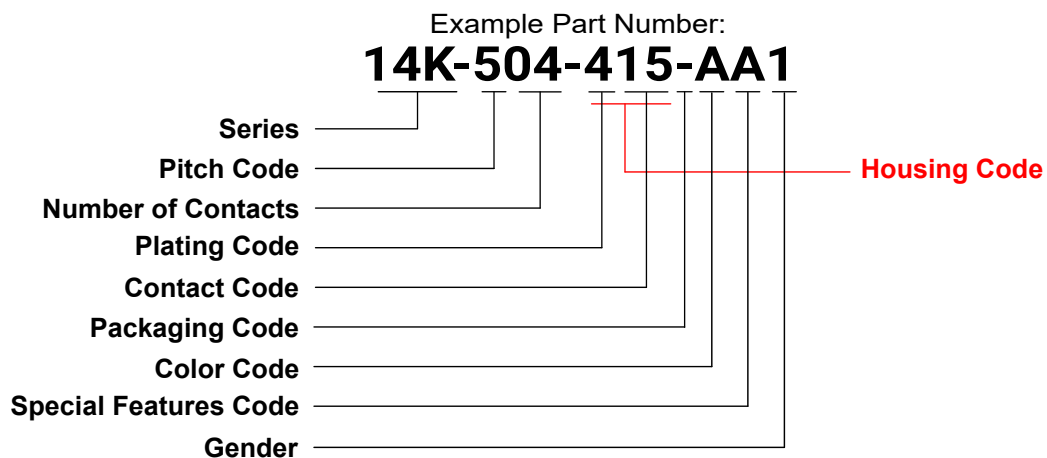
Features

- .098" (2.50mm) contact spacing
- For use with PCB board of .062" (1.60mm) nominal thickness
- Top entry or side entry configuration
- Wire to board and wire to wire options
- Contact termination options include crimp contact, P.C. Tail and surface mount (SMT)
- RoHS compliant



Specifications

Insulator Material	UL 94V-0 Thermoplastic PA66, Natural Color and LCP, Natural Color (SMT only)	
Contact Material	Brass (Pin Header)	Phosphor Bronze (Crimp)
Contact Plating	Tin Plated	
Current Rating	3 Amps	
Contact Resistance	10 Milliohms maximum	
Dielectric Withstanding Voltage	1000 VAC/minute	
Insulation Resistance	1000 Megaohms minimum	
Operating Temperature	-40°C to +105°C	
Applicable Wire	30-22 AWG	

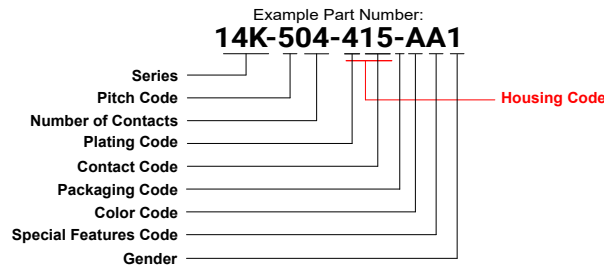


*** Please see next page for options

14K Series



Wire-to-Board/Wire-to-Wire Connectors .098" (2.50mm) Pitch



Series	Description
14K	Wire-to-Board, Wire-to-Wire
Pitch Code	Description
5	.098" (2.50mm)
Number of Contacts	
02, 03, 04, 05, 06, 07, 08, 09, 10, 11, 12, 13, 14, 15, 16	
Plating Code	Description
4	Tin Plated
Contact Code - Pin Headers	Description
11	Top Entry, Through Hole, Kink 1
12	Top Entry, Through Hole, Kink 2
15	Top Entry, Through Hole, Straight
16	Side Entry, Through Hole, Straight
21	Side Entry, Through Hole, Kink 1
17	Top Entry, Surface Mount
18	Side Entry, Surface Mount
Housing Code	Description
210	Housing (Note 1)
Packaging Code	Description
-	Bulk (Note 2)
T	Tape and Reel (Note 3)
Color Code	Description
A	Natural
Special Features Code	Description
For housings only	Use with housing code 210
A	None
For pin headers only	
A	None
D	With PCB Stabilizer (For side entry through hole pin header only)
Gender	Description
1	Pin (Note 4)
2	Socket (Note 5)

Ordering Notes:

1. "Housing Code" replaces the "Plating Code" and "Contact Code - Pin Headers". Contact options can be found in the "Crimp Contact Ordering Code" table. See page 3.
2. Use with all options except SMTs.
3. Use with SMTs only. SMTs cannot be ordered with bulk packaging.
4. Use with housing code 210 and pin headers only.
5. Use with housing code 210 only.

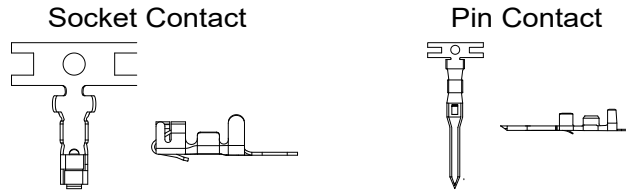
14K Series



Wire-to-Board/Wire-to-Wire Connectors .098" (2.50mm) Pitch

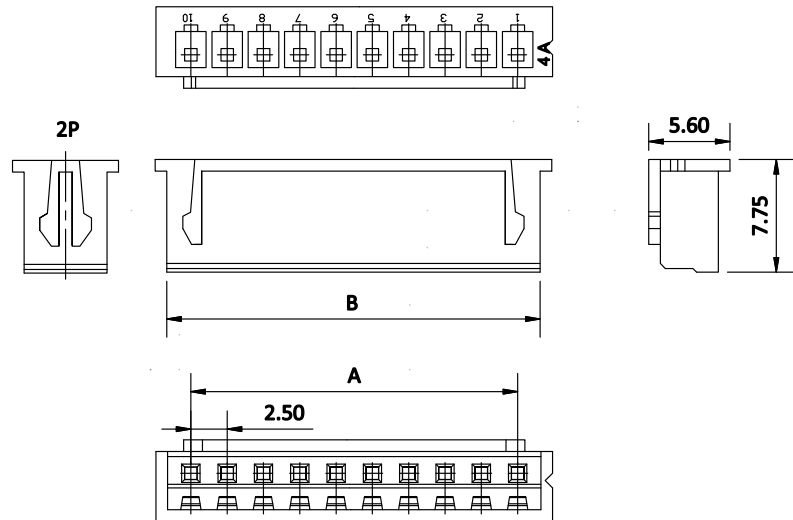
Crimp Contact Ordering Code

Part Number	Wire Gauge	Description	Gender
14K-292-421	30-24 AWG	Tin Plated	Pin (Use with pin housing only)
14K-292-452	28-22 AWG	Tin Plated	Socket (Use with socket housing only)



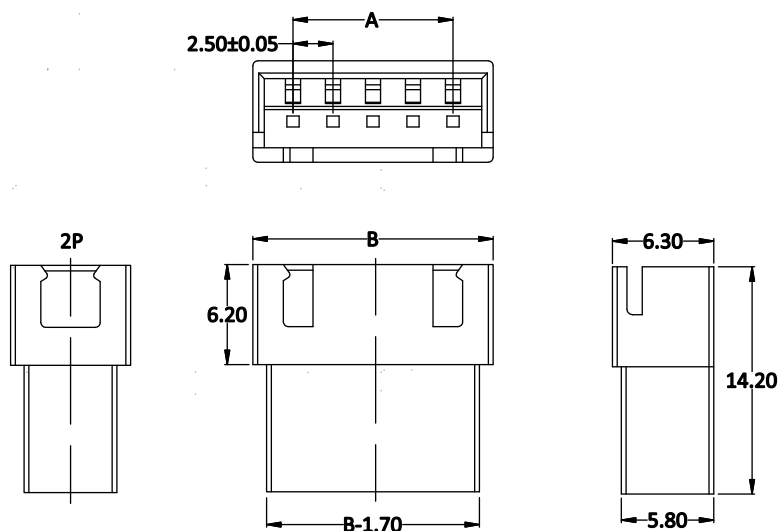
Socket Housing

No. of Contacts	Dimension	
	A	B
2	2.50	5.70
3	5.00	8.20
4	7.50	10.70
5	10.00	13.20
6	12.50	15.70
7	15.00	18.20
8	17.50	20.70
9	20.00	23.20
10	22.50	25.70
11	25.00	28.20
12	27.50	30.70
13	30.00	33.20
14	32.50	35.70
15	35.00	38.20
16	37.50	40.70



Pin Housing

No. of Contacts	Dimension	
	A	B
2	2.50	7.50
3	5.00	10.00
4	7.50	12.50
5	10.00	15.00
6	12.50	17.50
7	15.00	20.00
8	17.50	22.50
9	20.00	25.00
10	22.50	27.50
11	25.00	30.00
12	27.50	32.50
13	30.00	35.00
14	32.50	37.50
15	35.00	40.00
16	37.50	42.50

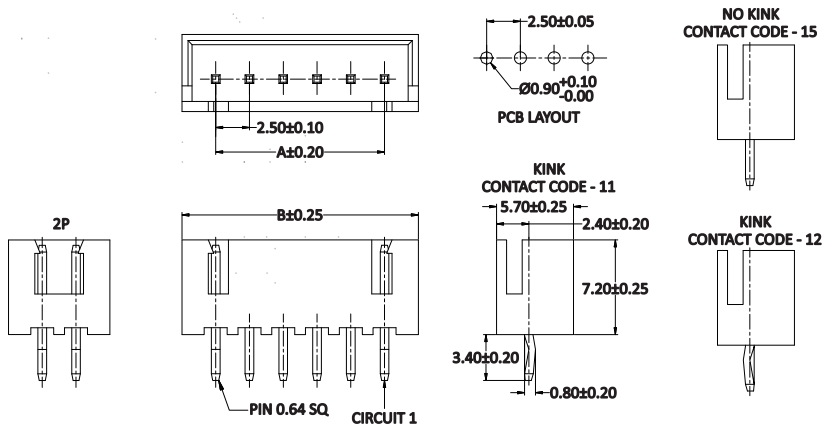


14K Series

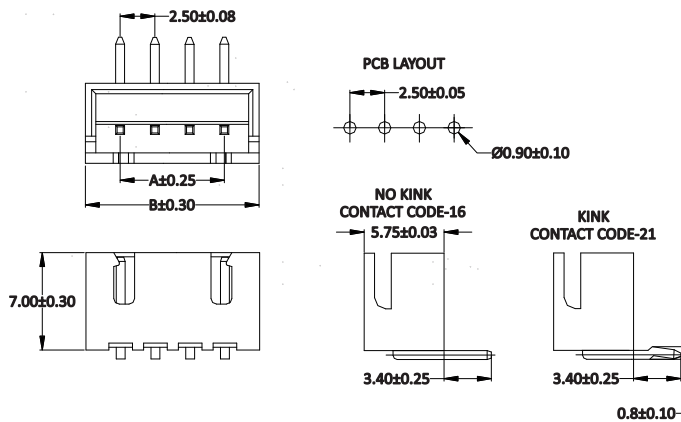
Wire-to-Board/Wire-to-Wire Connectors .098" (2.50mm) Pitch



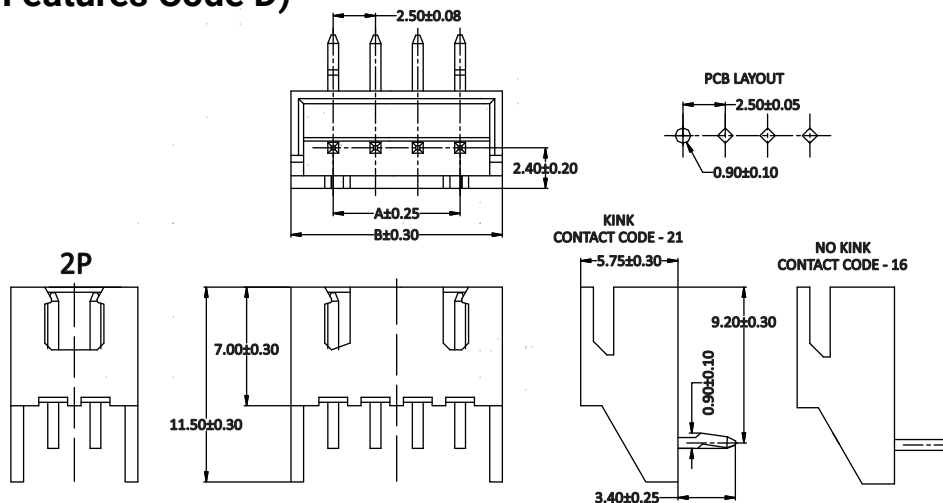
Through Hole Type Headers - Top Entry



Through Hole Type Headers - Side Entry



Through Hole Type Headers - Side Entry (With PCB Stabilizer) (Special Features Code D)



14K Series

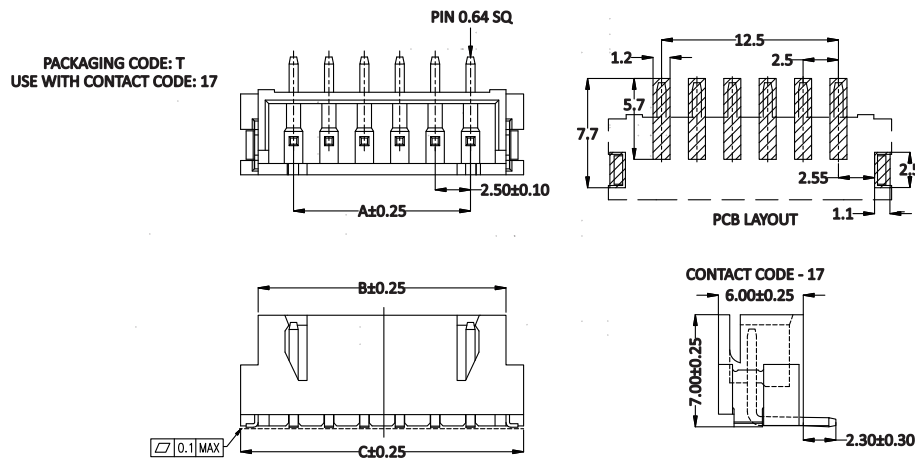


Wire-to-Board/Wire-to-Wire Connectors .098" (2.50mm) Pitch

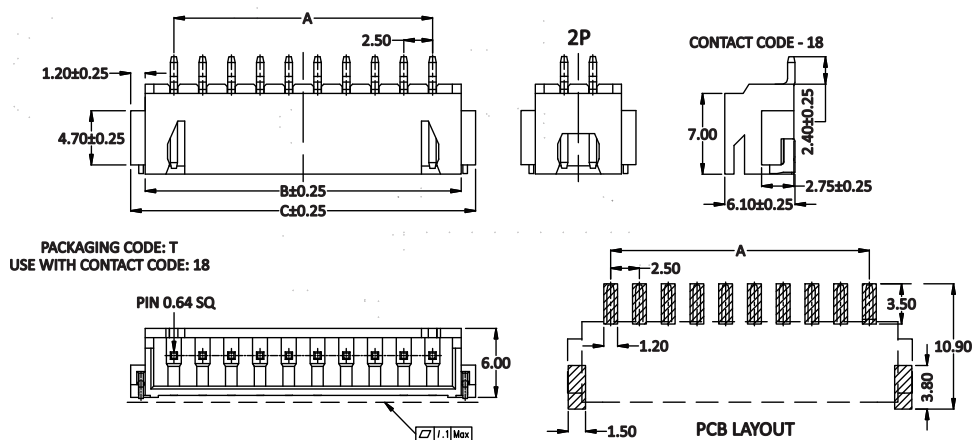
Surface Mount Type Headers

No. of Contacts	Dimensions			No. of Contacts	Dimensions		
	A	B	C		A	B	C
2	2.50	7.50	10.00	10	22.50	27.50	30.00
3	5.00	10.00	12.50	11	25.00	30.00	32.50
4	7.50	12.50	15.00	12	27.50	32.50	35.00
5	10.00	15.00	17.50	13	30.00	35.00	37.50
6	12.50	17.50	20.00	14	32.50	37.50	40.00
7	15.00	20.00	22.50	15	35.00	40.00	42.50
8	17.50	22.50	25.00	16	37.50	42.50	45.00
9	20.00	25.00	27.50				

Surface Mount Type Headers - Top Entry



Surface Mount Type Headers - Side Entry



14K Series



Wire-to-Board/Wire-to-Wire Connectors .098" (2.50mm) Pitch

Tooling

Hand Crimp Tool

Part Number	Description
14K-280-201	14K Series Hand Crimp Tool, Male/Female Contact, 30-22 AWG

Applicators *

Part Number	Description
14K-280-751	EDAC Press Applicator 14K Contact series 30-24 AWG
14K-280-751K	K Press Applicator 14K Contact series 30-24 AWG
14K-280-751G	G Press Applicator 14K Contact series 30-24 AWG
14K-280-752	EDAC Press Applicator 14K Contact series 28-22 AWG
14K-280-752K	K Press Applicator 14K Contact series 28-22 AWG
14K-280-752G	G Press Applicator 14K Contact series 28-22 AWG

* Applicators are made to order. For additional support, contact EDAC at Support@edac.net