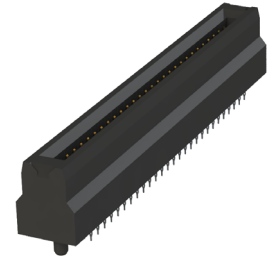


Press-Fit Card Edge Connector 0.75mm Pitch

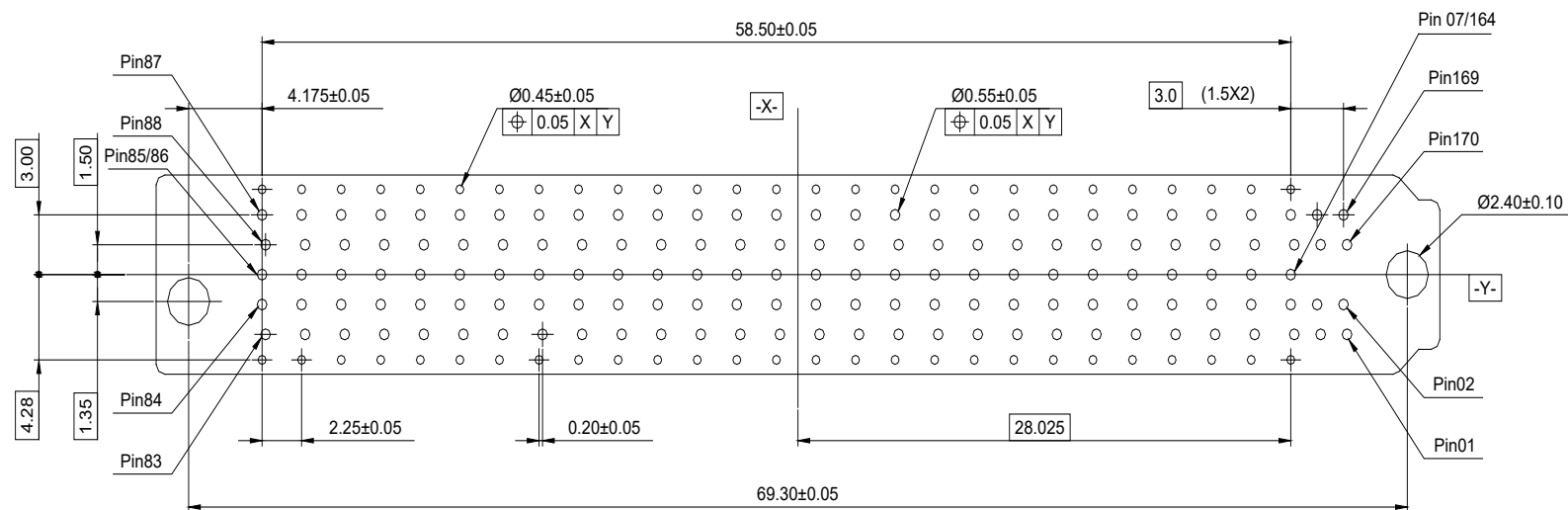
Features:

- Micro TCA Connector for advanced TCA system
- Insertion loss: Differential pair signaling 12Gbps@-4dB
- Number of contacts: 170
- Height: 12.85 mm
- Application: IPC
- Part number: 171-170-231-012



Specifications:

Insulator Material	High Temperature Thermoplastic UL-94V-0
Contact Material	Copper Alloy
Contact Plating	Gold Flash Plating
Current Rating	0.3 amps Per Ground Conductor
	0.4 amps Per General Purpose Conductor
	0.7 amps Per Power Conductor
Contact Resistance	Initial: $\Delta 25$ milliohms maximum After Test: $\Delta 10$ milliohms
Dielectric Withstanding Voltage	80 V AC for 60s
Insulation Resistance	100 megaohms minimum At 80 V DC
Operating Temperature	-40°C to +105°C
Insertion Force	100 N maximum
Withdrawal Force	65 N maximum



RECOMMENDED P.C. BOARD PATTERN LAYOUT
P.C. BOARD THICKNESS 1.4mm Min.