

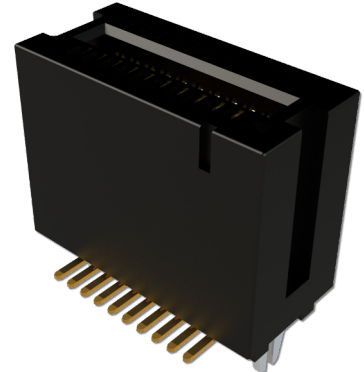
302 Series

Card Edge Connectors .050" (1.27mm) Pitch



Features

- .050" (1.27mm) contact spacing
- Accepts .062" (1.57mm) nominal thickness P.C. board
- Insulator body, .551" (14mm) high
- Contact termination options include P.C. tail, 90 degree bends, extender board bends and SMT tails
- Dual row configurations
- RoHS Compliant

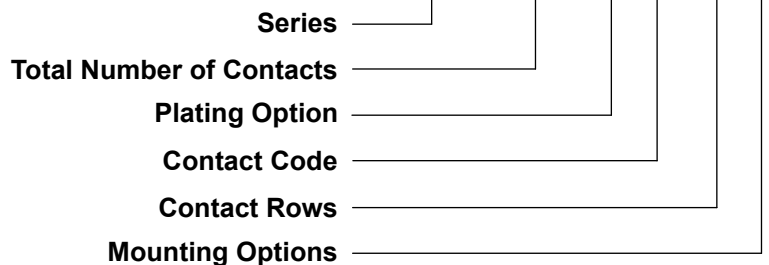


Specifications

Insulator Material	UL 94V-0 Thermoplastic PA66 and PPS (SMT only), black color
Contact Material	Copper Alloy
Contact Plating	Selective Gold Plating on mating area with Tin Plating on Solder Tail and Nickel underplating all over
Current Rating	1 amp
Contact Resistance	30 milliohms maximum
Dielectric Withstanding Voltage	500 V AC rms 60Hz for 1 minute
Insulation Resistance	1,000 Megaohms minimum
Operating Temperature	-55°C to +85°C
Insertion Force	230 grams maximum per contact pair
Withdrawal Force	15 grams minimum per contact pair

Example Part Number:

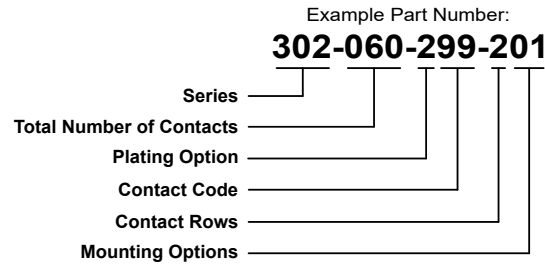
302-060-299-201



*** Please see next page for options

302 Series

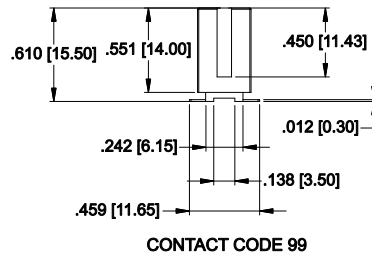
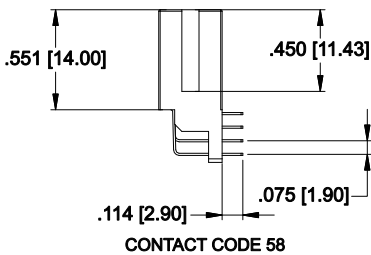
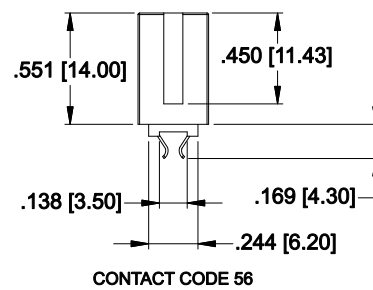
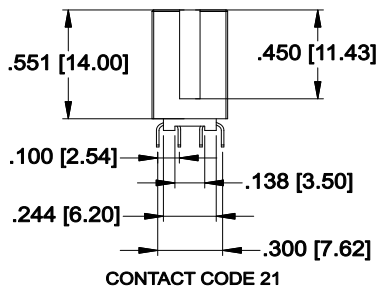
Card Edge Connectors .050" (1.27mm) Pitch



Series			
302			
Total Number of Contacts *			
004, 006, . . . 124			
Plating Options	Description		
2	Gold Flash		
3	15μ" of Gold		
6	30μ" of Gold		
Contact Code	Description	Tail Size	Tail Length "G"
21	P.C. Tail	.018" x .012" (0.46mm x 0.30mm)	.100" (2.54mm)
56	Extender Board Bend	.018" x .012" (0.46mm x 0.30mm)	
58	90 Degree Bend	.021" x .012" (0.55mm x 0.30mm)	.114" (2.90mm)
99	SMT Tail	.021" x .012" (0.55mm x 0.30mm)	
Contact Rows	Description		
2	Dual Row		
Mounting Options	Description		
01	Flush Mounting (No Mounting Lug)		
05	Mounting Pegs (only for contact code 99)		
06	With Boardlock (only for contact code 99)		

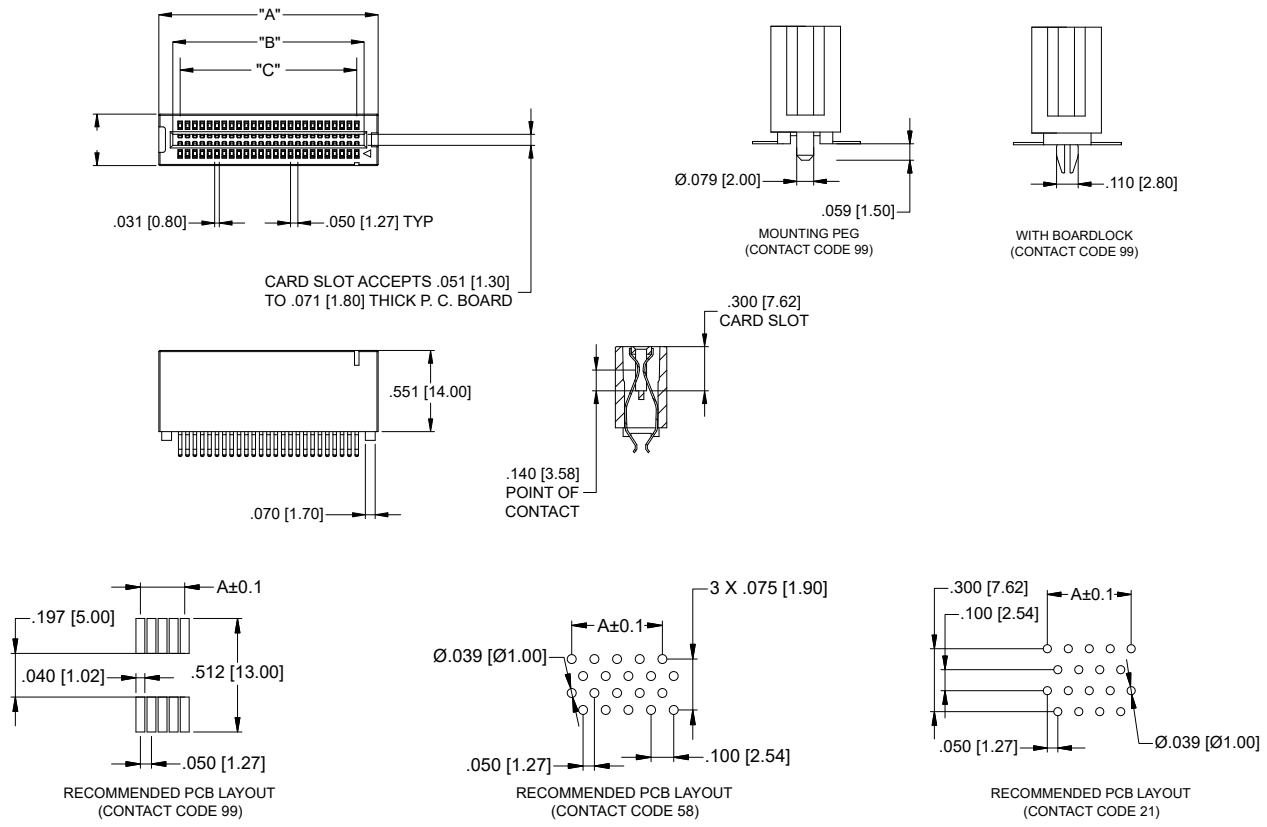
Ordering Code Notes:

- * Please see chart on page 3 & 4 for available sizes
- For 15μ" and 30μ" Plating Options, please Contact EDAC Customer Service at support@edac.net



302 Series

Card Edge Connectors .050" (1.27mm) Pitch



NUMBER OF CONTACTS	"A" ± 0.015 (± 0.38)		"B" ± 0.010 (± 0.25)		"C" ± 0.015 (± 0.38)	
	Inch	mm	Inch	mm	Inch	mm
4	0.34	8.64	0.15	3.81	0.05	1.27
6	0.39	9.91	0.20	5.08	0.10	2.54
8	0.44	11.18	0.25	6.35	0.15	3.81
10	0.49	12.45	0.30	7.62	0.20	5.08
12	0.54	13.72	0.35	8.89	0.25	6.35
14	0.59	14.99	0.40	10.16	0.30	7.62
16	0.64	16.26	0.45	11.43	0.35	8.89
20	0.74	18.80	0.55	13.97	0.45	11.43
22	0.79	20.07	0.60	15.24	0.50	12.70
24	0.84	21.34	0.65	16.51	0.55	13.97
26	0.89	22.61	0.70	17.78	0.60	15.24
30	0.99	25.15	0.80	20.32	0.70	17.78
32	1.04	26.42	0.85	21.59	0.75	19.05
36	1.14	28.96	0.95	24.13	0.85	21.59
40	1.24	31.50	1.05	26.67	0.95	24.13
48	1.44	36.58	1.25	31.75	1.15	29.21
50	1.49	37.85	1.30	33.02	1.20	30.48
52	1.54	39.12	1.35	34.29	1.25	31.75
60	1.74	44.20	1.55	39.37	1.45	36.83
68	1.94	49.28	1.75	44.45	1.65	41.91
70	1.99	50.55	1.80	45.72	1.70	43.18
80	2.24	56.90	2.05	52.07	1.95	49.53
100	2.74	69.60	2.55	64.77	2.45	62.23
110	2.99	75.95	2.80	71.12	2.70	68.58
120	3.24	82.30	3.05	77.47	2.95	74.93
124	3.34	84.84	3.15	80.01	3.05	77.47

302 Series

Card Edge Connectors .050" (1.27mm) Pitch



Available Positions Per Contact Code



Available



Available by trimming from larger stabilizer sizes
(for contact code 58 only)



Not Available

No. of Contacts	Contact Code					
	21	56	58	99		
				No Peg	With Peg	With Boardlock
4	Available	Available	Available by trimming	Available	Available	Not Available
6	Available	Available	Available by trimming	Available	Available	Not Available
8	Available	Available	Available by trimming	Available	Available	Not Available
10	Available	Available	Available by trimming	Available	Available	Not Available
12	Available	Available	Available by trimming	Available	Available	Not Available
14	Available	Available	Available by trimming	Available	Available	Not Available
16	Available	Available	Available by trimming	Available	Available	Not Available
18	Not Available	Not Available	Not Available	Not Available	Not Available	Not Available
20	Available	Available	Available by trimming	Available	Available	Not Available
22	Available	Available	Available by trimming	Available	Available	Not Available
24	Available	Available	Available by trimming	Available	Available	Not Available
26	Available	Available	Available by trimming	Available	Available	Not Available
28	Not Available	Not Available	Not Available	Not Available	Not Available	Not Available
30	Available	Available	Available by trimming	Available	Available	Not Available
32	Available	Available	Available by trimming	Available	Available	Not Available
34	Not Available	Not Available	Not Available	Not Available	Not Available	Not Available
36	Available	Available	Available by trimming	Available	Available	Not Available
38	Not Available	Not Available	Not Available	Not Available	Not Available	Not Available
40	Available	Available	Available by trimming	Available	Available	Not Available
42	Not Available	Not Available	Not Available	Not Available	Not Available	Not Available
44	Not Available	Not Available	Not Available	Not Available	Not Available	Not Available
46	Not Available	Not Available	Not Available	Not Available	Not Available	Not Available
48	Available	Available	Available by trimming	Available	Available	Not Available
50	Available	Available	Available by trimming	Available	Available	Not Available
52	Available	Available	Available by trimming	Available	Available	Not Available
54	Not Available	Not Available	Not Available	Not Available	Not Available	Not Available
56	Not Available	Not Available	Not Available	Not Available	Not Available	Not Available
58	Not Available	Not Available	Not Available	Not Available	Not Available	Not Available
60	Available	Available	Available by trimming	Available	Available	Not Available
68	Available	Available	Available by trimming	Available	Available	Not Available
70	Available	Available	Available by trimming	Available	Available	Not Available
80	Available	Available	Available by trimming	Available	Available	Not Available
100	Available	Available	Available by trimming	Available	Available	Not Available
110	Available	Available	Available by trimming	Available	Available	Not Available
120	Available	Available	Available by trimming	Available	Available	Not Available
124	Available	Available	Available by trimming	Available	Available	Not Available