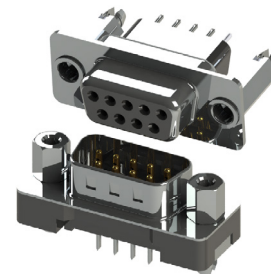


D-Sub Connectors: Vertical, Metal Body

Features:

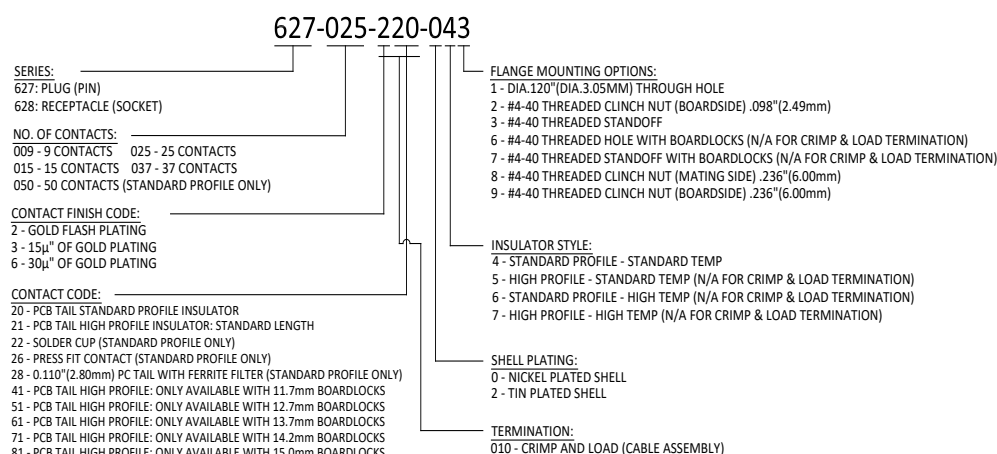
- Standard and high profile insulator styles are available
- 0.109"(2.77mm) contact spacing x 0.112"(2.84mm) row spacing
- Plug and receptacle in 9, 15, 25, 37 or 50 contact sizes
- Pin and socket contact mating design with P.C. tail termination
- Metal shell provides EMI/RFI shielding, plug shell indents provide grounding and additional mating retention
- Grounding features include boardlock for exceptional retention to P.C. board
- Mounting options for panel mount or connector mating include through hole, threaded hole and threaded standoffs
- D-shaped connector mating outline provides polarization
- Design based on requirements of MIL-C-24038, EIA RS-232 and RS-449



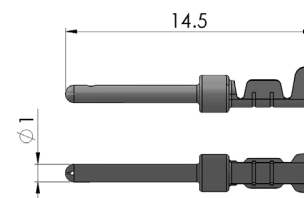
Specifications:

Insulator Material	Thermoplastic polyester, UL 94V-0, chemical resistant, color: Black
Contact Material	Plug (pin): Brass Receptacle (socket): Brass
Contact Plating	Selective gold (see ordering code) over nickel for the mating area, tin plating for tail area
Ferrite Specs:	20dB minimum @30 MHz, 30dB minimum @50 MHz, and 50dB minimum @100 MHz
Shell Material	Nickel plated steel (optional tin plating)
Current Rating	3 amps - 5 amps
Contact Resistance	25 milliohms maximum
Insulation Resistance	1000 megohms minimum
Dielectric Withstanding Voltage	1000 V AC rms at Sea Level
Operating Temperature	-55°C To +85°C
Insertion Force	16 oz (4.45 N) Maximum Per Contact Position
Withdrawal Force	1 oz (0.28 N) Minimum Per Contact Position

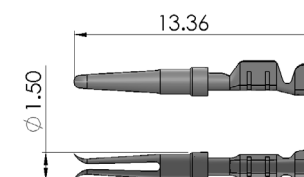
Ordering Code:



Contact P/N:	Description:	Wire Gauge (AWG):
627-290-001	On reel	20-26
627-290-001P60	60 pcs/strip	20-26

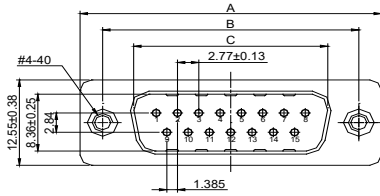


Contact P/N:	Description:	Wire Gauge (AWG):
628-292-001	On reel	22-28
628-292-001P60	60 pcs/strip	22-28

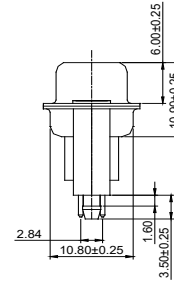
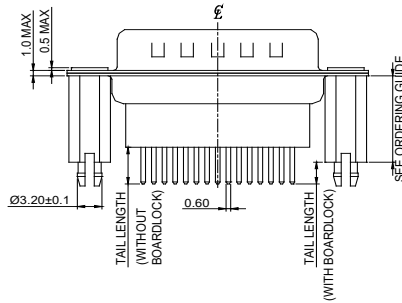


HIGH PROFILE

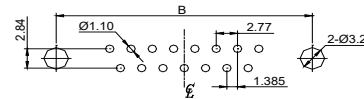
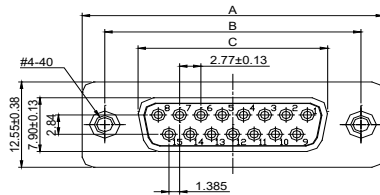
PLUG 627 SERIES HIGH PROFILE



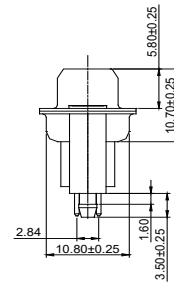
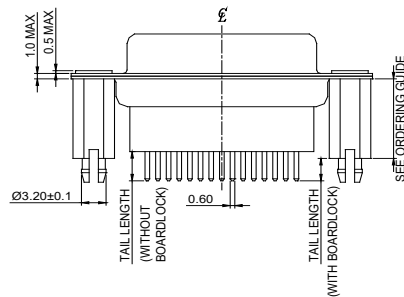
NUMBER OF CONTACTS	A±0.38		B±0.25		C±0.13 PLUG		C±0.13 RECEPTACLE	
	Inch	(mm)	Inch	(mm)	Inch	(mm)	Inch	(mm)
9	1.213	(30.81)	.984	(24.99)	.666	(16.92)	.643	(16.33)
15	1.543	(39.19)	1.312	(33.32)	.994	(25.25)	.971	(24.66)
25	2.088	(53.04)	1.852	(47.04)	1.534	(38.96)	1.511	(38.38)
37	2.729	(69.32)	2.500	(63.50)	2.182	(55.42)	2.159	(54.84)



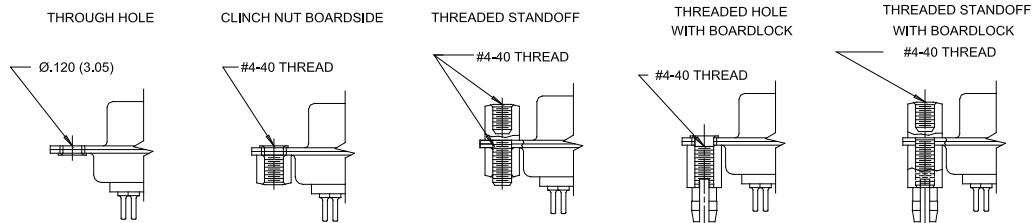
RECEPTACLE 628 SERIES HIGH PROFILE



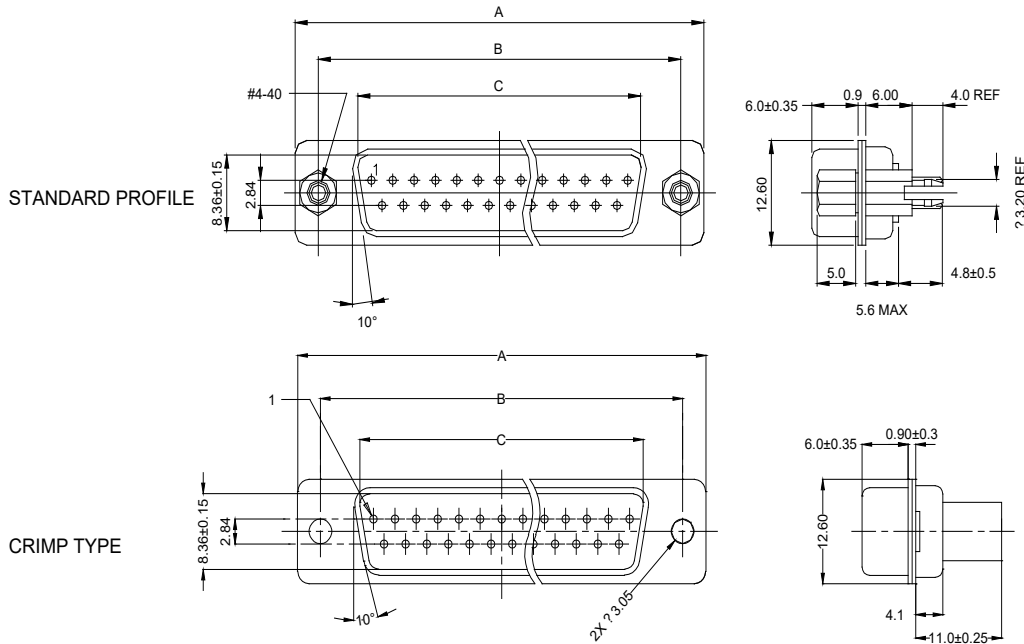
RECOMMENDED P.C.B LAYOUT FOR PLUG AND RECEPTACLE



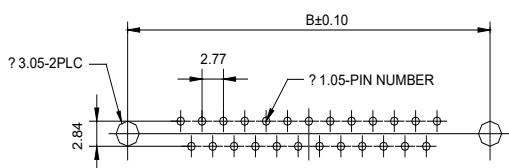
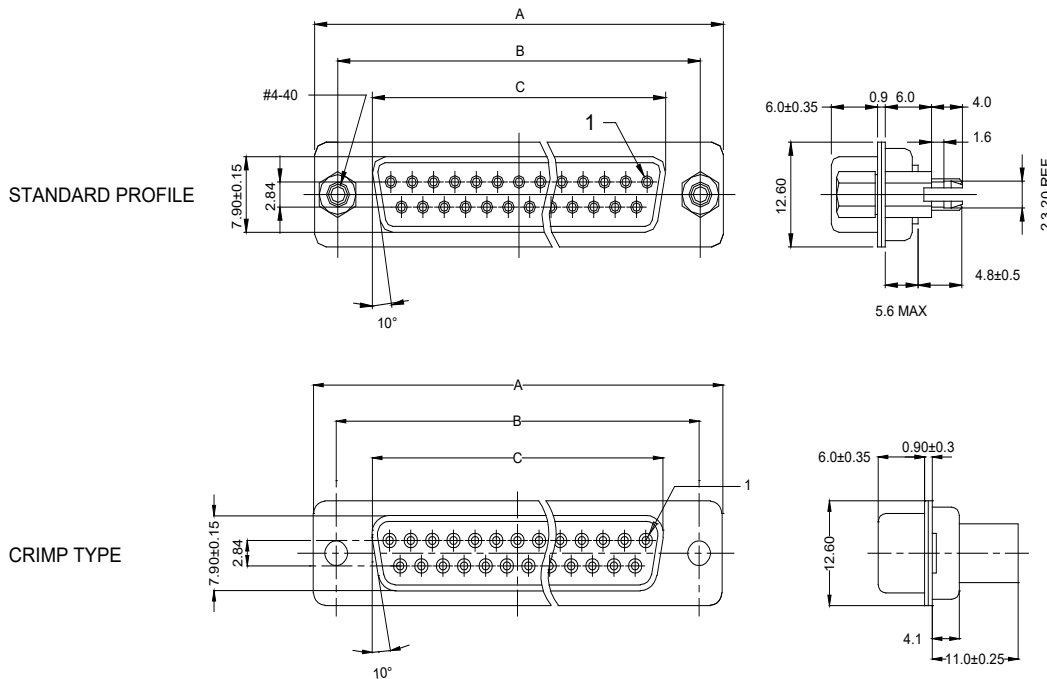
FLANGE MOUNTING OPTIONS



PLUG 627 SERIES



RECEPTACLE 628 SERIES



Recommended PCB Layout
(Plug and Receptacle)

NUMBER OF CONTACTS	A±0.35		B±0.10		C±0.15 PLUG		C±0.15 RECEPTACLE	
	Inch	(mm)	Inch	(mm)	Inch	(mm)	Inch	(mm)
9	1.213	(30.80)	.984	(24.99)	.666	(16.92)	.642	(16.30)
15	1.541	(39.15)	1.312	(33.32)	.994	(25.25)	.970	(24.65)
25	2.087	(53.00)	1.852	(47.04)	1.534	(38.96)	1.512	(38.40)
37	2.728	(69.30)	2.500	(63.50)	2.182	(55.42)	2.157	(54.80)
50	2.638	(67.00)	2.402	(61.00)	2.079	(52.80)	2.055	(52.20)