

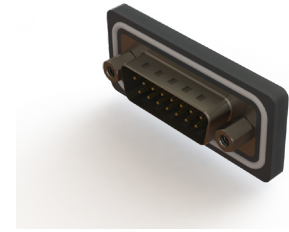
# 627W/628W SERIES



## Waterproof D-Sub Connectors: Vertical

### Features:

- 0.109"(2.77mm) contact spacing x 0.112"(2.82mm) row spacing
- Plug and receptacle in 9, 15, or 25 contact sizes
- Pin and socket contact mating design with P.C. tail termination or solder cup termination
- Plug shell indents provide grounding and additional mating retention
- Grounding features include two prong boardlock for exceptional retention to P.C. board
- Mounting options for panel mount or connector mating include threaded inserts or threaded standoffs
- D-shaped connector mating outline provides polarization
- Degree of protection: IP67 as per IEC60529



### Specifications:

Insulator Material	PBT Thermoplastic with 30% Glass Filled, UL 94V-0 Rated, Black color
Contact Material	Pins and Sockets: Copper Alloy
Contact Plating	Gold Plating over Nickel underplating
Shell Material	Nickel Plated Steel
Epoxy Sealant	Epoxy
O-Ring	Silicone
Current Rating	5 amps
Contact Resistance	10 Milliohms maximum
Dielectric Withstanding Voltage	5000 megaohms minimum
Insulation Resistance	1000 V AC rms at Sea Level
Operating Temperature	-25°C To +85°C

### Ordering Code:

## 627-W09-220-012

SERIES:  
PLUG . . . . 627  
RECEPTACLE . . . . 628

EDAC CODE:  
WATERPROOF . . . . W

NO. OF CONTACTS:  
9 CONTACT PINS . . . . 09  
15 CONTACT PINS . . . . 15  
25 CONTACT PINS . . . . 25

CONTACT PLATING:  
GOLD FLASH OVER NICKEL . . . . 2  
15µ" GOLD OVER NICKEL . . . . 3  
30µ" GOLD OVER NICKEL . . . . 6

MOUNTING OPTIONS:  
2 . . . . #4-40 UNC THREADED HOLE  
3 . . . . RIVETED #4-40 UNC BOARDLOCKS

NOTE: ALL CONNECTORS ARE SHIPPED WITH  
#4-40 UNC HEXAGON SCREWS  
(PACKED SEPARATELY)

SHELL OPTIONS:  
1 . . . . NICKEL PLATED

INSULATOR COLOR:  
0 . . . . BLACK

CONTACT CODE:  
20 . . . . PC TAIL FOR STANDARD D-SUB  
21 . . . . PC TAIL FOR D-SUB TAIL LENGTH 14.95mm  
22 . . . . SOLDER CUP TERMINATION