

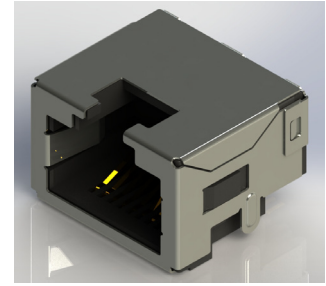
# J6E SERIES



**MODULAR JACK CONNECTORS: SINGLE PORT RJ45 WITH OPTIONAL LEDS, TAB UP RIGHT ANGLE SMT MOUNT, SHIELDED**

## Features:

- Top performance for high speed networking, voice and data applications
- Meet FCC PART 68, Subpart F requirements
- Advanced EMI/RFI protection with grounding options (PCB or panel)
- Applications: Telecommunications, Broadcast, Data Products
- RoHS Compliant



## Specifications:

Insulator Material	LCP or Nylon
Contact Material	Phosphor Bronze
Contact Plating	Gold Plating on contact area and Tin Plating on tails with Nickel underplating all over
Current Rating	1.5 amps @25°C
Voltage Rating	125 V AC
Contact Resistance	20 milliohms maximum
Dielectric Withstanding Voltage	1000 V AC
Insulation Resistance	500 megaohms minimum
Durability	750 cycles minimum
Operating Temperature	-40°C to +85°C
Wave Soldering Process	260°C ± 5°C, 5~10 Seconds

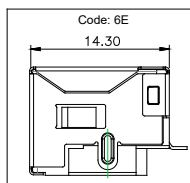
## Ordering Code:

**EXAMPLE PART NUMBER: J6E018824N00110**

**SERIES:**  
RJ MODULAR JACK

**HOUSING TYPE:**

6E-



**NO. OF PORTS:**  
01 - 1 PORT

**NO. OF CONTACTS PER PORT:**  
88 - 8P8C

**CONTACT PLATING:**  
2 - GOLD FLASH  
3 - 15 MICROINCHES OF GOLD  
6 - 30 MICROINCHES OF GOLD  
9 - 50 MICROINCHES OF GOLD

**CONTACT TAIL TYPE:**  
4 - RIGHT ANGLE SURFACE MOUNT

**HOUSING MATERIAL:**  
N - NYLON  
L - LCP

**MOUNTING OPTIONS:**

0 - STANDARD

**PORT TYPE:**

1 - SINGLE ROW (TAB DOWN)

**SHIELDING:**

1 - METAL SHIELD

**RIGHT LED COLOR:**

0 - NO LED

1 - YELLOW

2 - RED

3 - GREEN

4 - ORANGE

5 - BI-COLOR (GREEN/YELLOW)

6 - BI-COLOR (RED/GREEN)

7 - BI-COLOR (GREEN/ORANGE)

8 - BI-COLOR (RED/YELLOW)

**LEFT LED COLOR:**

0 - NO LED

1 - YELLOW

2 - RED

3 - GREEN

4 - ORANGE

5 - BI-COLOR (GREEN/YELLOW)

6 - BI-COLOR (RED/GREEN)

7 - BI-COLOR (GREEN/ORANGE)

8 - BI-COLOR (RED/YELLOW)