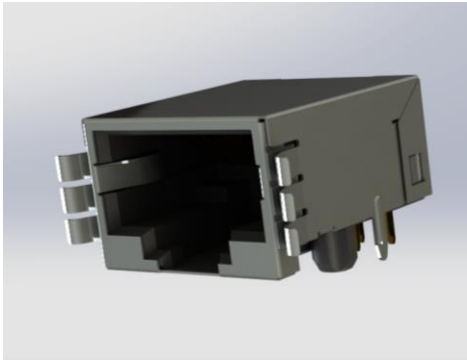


SINGLE PORT RJ45, TAB DOWN RIGHT ANGLE PCB MOUNT, SHIELDED WITH 'REVERSED' EMI, 6.35mm FOOTPRINT



FEATURES:

- Top performance for high speed networking, voice and data applications
- Meet FCC PART 68, Subpart F requirements
- Advanced EMI / RFI protection with Grounding options (PCB or Panel)
- Applications: Telecommunications, Broadcast, Data Products
- RoHS Compliant

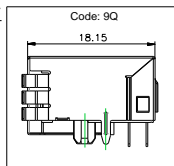
Specifications:

Housing Material	PBT or Nylon
Contact Material	Phosphor Bronze
Contact Plating	Gold Plating on contact area and Tin Plating on tails with Nickel underplating all over
Current Rating	1.5A @25°C
Voltage Rating	125V AC
Contact Resistance	20 mΩ maximum
Dielectric Withstanding Voltage	1000VAC
Insulation Resistance	500 MΩ minimum
Durability	750 cycles minimum
Operating Temperature	-40°C to +85°C
Wave Soldering Process	260°C ± 5°C, 5~10 Seconds

EXAMPLE PART NUMBER: **J9Q018822P00202**

SERIES: _____
RJ MODULAR JACK

HOUSING TYPE: _____
9Q-



NO. OF PORTS: _____
01 - 1 PORT

NO. OF CONTACTS PER PORT: _____
88 - 8P8C

CONTACT PLATING: _____
2 - GOLD FLASH
3 - 15 MICROINCHES OF GOLD
6 - 30 MICROINCHES OF GOLD
9 - 50 MICROINCHES OF GOLD

CONTACT TAIL TYPE: _____
2 - RIGHT ANGLE PCB

HOUSING MATERIAL: _____
P - PBT
N - NYLON

MOUNTING OPTIONS:
2 - PEGS

PORT TYPE:
0 - SINGLE ROW (TAB DOWN)

SHIELDING:
2- METAL SHIELD WITH EMI

RIGHT LED COLOR:
0 - NO LED

LEFT LED COLOR:
0 - NO LED